

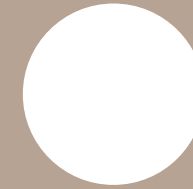


prime residence

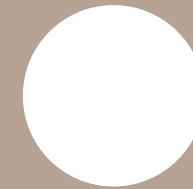


bbf.com

bbf:



a comfortable lifestyle awaits welcome home



prime residence

A RESIDENCE OFFERING NOTHING MORE THAN OPULENCE AND ELEGANCE CREATED TO INDULGE YOUR PERCEPTIONS

These well thought out curated apartments and penthouses are designed meticulously in every detail to bring home the best luxury lifestyle. Surrounded by endless lights of Limassol and a stunning skyline, this city offers an upscale vibe that will define a Mediterranean resort. A perfect place to create unforgettable memories, relax and escape. Enjoy Limassol's most enticing lifestyle with the sparkling Mediterranean Sea located only moments away. The complex is a 5 story building boasting 28 apartments and 4 luxurious penthouses with private roof tops and swimming pools.



THE ROOF OF THE RESIDENCE OFFERS A TRANQUIL ENVIRONMENT PROVIDING OUTSTANDING AMENITIES ESSENTIAL TO THE UNIQUE DESIGN

A fully equipped gym and sauna will energize your body, mind, and soul with a great kick start to your day or simply take away any stress accumulated during the day. Immerse and relax around an inviting communal swimming pool with pleasant peaceful surroundings and fulfill a true luxury urban lifestyle with positive energy.



major benefits

- Unique design from a London architect
- Right in the middle of Limassol's tourist area, 300 meters to the sea
- Spacious layouts
- Communal swimming pool, gym and sauna
- 5 minutes walk to the 5* Apollonia hotel, bars, cafeterias and the famous Garden restaurant

- Penthouses with roof terraces and private pools
- High quality kitchens and sanitary ware
- High standards of finish (parquet, marble, high ceilings, concealed a/c and underfloor heating)
- Stunning city views and sea views from penthouses



introduction

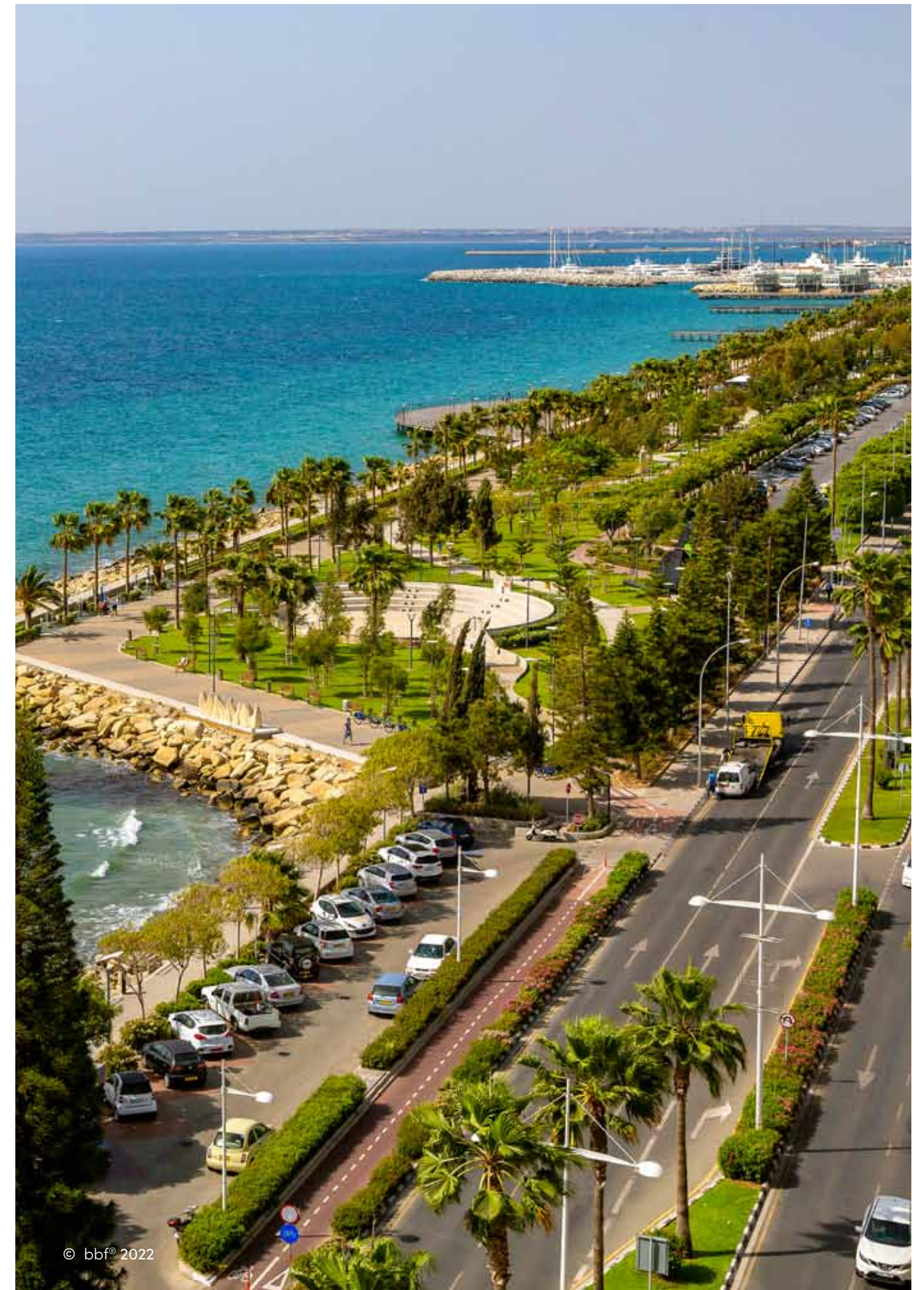
**LIMASSOL
COMBINES
THE FAST PACE
OF A CITY AND
THE COMFORT
OF A FIRST-CLASS
MEDITERRANEAN
RESORT**

Limassol is the second largest urban area in Cyprus, located on the southern coast, with an urban population of 160,000 – 176,700.

Limassol was built between two ancient cities – Amathus and Kourion – and during Byzantine rule it was known as Neapolis (new town). Limassol's historical centre is located around its medieval Limassol Castle and the Old Port. Today the city spreads along the Mediterranean coast and has extended much farther than the castle and port, with its suburbs stretching along the coast to Amathus.

The history of Limassol is largely associated with the Third Crusade of Richard the Lionheart, who arrived in Limassol in 1191 on his way to the Holy Land. He arrested the renegade Byzantine Greek governor of Cyprus Limassol, Isaac Komnenos, taking over the entire island, and bringing the long Byzantine dominion of Cyprus to an end. Richard also celebrated his marriage with Berengaria who had received the crown as queen of England in Limassol. Richard destroyed Amathus and the inhabitants were transferred to Limassol.

Limassol has a Subtropical-Mediterranean climate with warm to hot and dry summers as well as very mild winters, separated by short springs and autumns which are generally pleasant.



© bbf® 2022

location

LIMASSOL IS KNOWN AS THE CITY FOR EVERYONE. IT IS THE SECOND LARGEST AND BY FAR THE MOST FLOURISHING CITY IN CYPRUS. IT COMBINES THE FAST PACE OF A CITY AND THE COMFORT OF A FIRST-CLASS MEDITERRANEAN RESORT.

The city offers a diverse variety of pleasures such as the dynamic metropolitan city for business, infinite sandy beaches, interesting historical sites, restaurants with all sorts of food for the most sophisticated gourmets, and the shopping areas; you'll find it all and much more in Limassol!

The project is nestled in a carefully selected, quiet and safe neighborhood of the prestigious Potamos Germasogeia area of Limassol, just 300 meters away from the best sandy beaches of the tourist area and Limassol's best leisure spots, banks, pharmacies, food stores.



• exterior



A residence offering nothing more than opulence and elegance created to indulge your perceptions

• exterior



**Prime Residence boasts
28 apartments and 4 luxurious
penthouses with private roof tops
and swimming pools**



• exterior



**Right in the middle
of Limassol's tourist area,
300 meters to the sea**

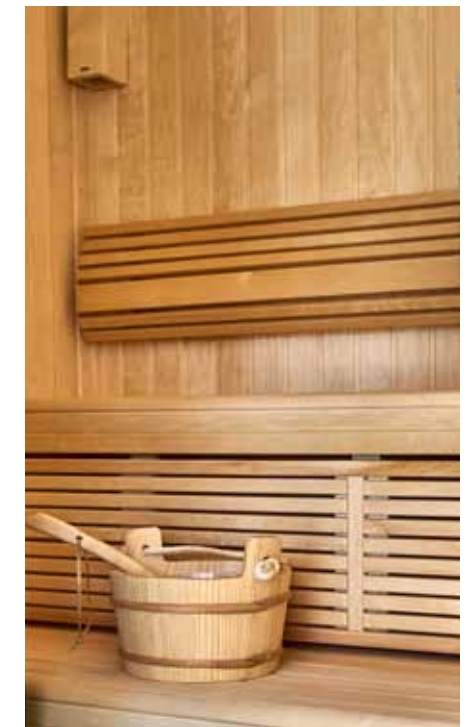


• exterior



• resident facilities

The building offers outdoor swimming pool, secure covered parking, a fully equipped gym and sauna



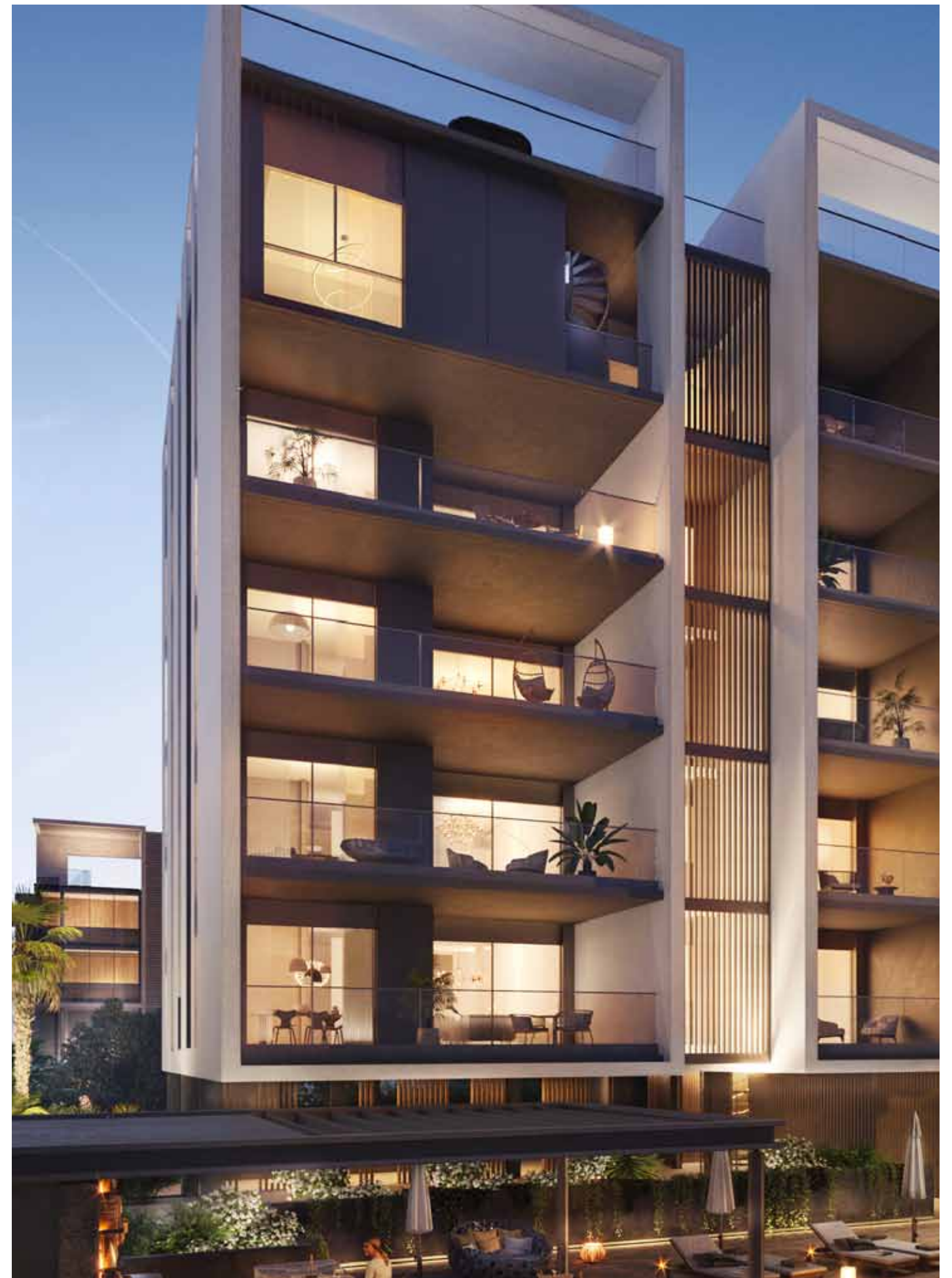
• resident facilities



choice of properties

UNIT N°	PROPERTY TYPE	BED-ROOMS	BATH-ROOMS	PRIVATE POOL	INDOOR AREA M ²	COV. VERANDA M ²	AUXILIARY AREA M ²	GARAGE AREA M ²	ROOF TERRACE M ²	STORAGE ON GROUND FLOOR M ²	COMMON AREA PER UNIT M ²	TOTAL AREA M ²
101	Apartment	S	1		42.00	7.80		12		4.57	6.50	72.87
102	Apartment	S	1		38.50	6.90		12		3.95	5.93	67.28
103	Apartment	1	1		54.70	12.90		12		4.52	8.82	92.94
104	Apartment	1	1		54.70	12.90		12		3.95	8.82	92.37
105	Apartment	S	1		38.50	6.90		12		4.66	5.93	67.99
106	Apartment	S	1		42.00	7.80		12		10.35	6.50	78.65
107	Apartment	S	1		43.70	10.80		12		8.07	7.11	81.68
108	Apartment	1	1		51.50	13.80		12		4.05	8.52	89.87
109	Apartment	1	1		51.50	13.80		12		4.05	8.52	89.87
110	Apartment	S	1		43.70	10.80		12		8.56	7.11	82.17
201	Apartment	2	2		93.47	22.48		12		5.06	15.13	148.14
202	Apartment	2	2		90.45	30.08		12		4.56	15.73	152.82
203	Apartment	1	1		54.70	12.90		12		5.18	8.82	93.60
204	Apartment	1	1		54.70	12.90		12		5.36	8.82	93.78
205	Apartment	2	2		90.45	30.08		12		4.84	15.73	153.10
206	Apartment	2	2		93.47	22.48		12		4.97	15.13	148.05
301	Apartment	2	2		93.47	22.48		12		5.23	15.13	148.31
302	Apartment	2	2		90.45	30.08		12		4.57	15.73	152.83
303	Apartment	1	1		54.70	12.90		12		5.54	8.82	93.96
304	Apartment	1	1		54.70	12.90		12		5.23	8.82	93.65
305	Apartment	2	2		90.45	30.08		12		4.57	15.73	152.83
306	Apartment	2	2		93.47	22.48		12		5.39	15.13	148.47
401	Apartment	2	2		93.47	22.48		12		5.46	15.13	148.54
402	Apartment	2	2		90.45	30.08		12		4.77	15.73	153.03
403	Apartment	1	1		54.70	12.90		12		4.57	8.82	92.99
404	Apartment	1	1		54.70	12.90		12		5.40	8.82	93.82
405	Apartment	2	2		90.45	30.08		12		4.77	15.73	153.03
406	Apartment	2	2		93.47	22.48		12		5.46	15.13	148.54
501	Penthouse	3	3	YES	133.78	24.96	6th 43.18	12	68.73	5.35	26.36	314.36
502	Penthouse	3	3	YES	136.06	33.36	6th 43.07	12	62.49	5.16	27.74	319.88
503	Penthouse	3	3	YES	136.06	33.36	6th 43.18	12	62.49	5.16	27.75	320.00
504	Penthouse	3	3	YES	133.78	24.96	6th 43.07	12	68.73	5.60	26.34	314.48

NOTE: the areas stated above may slightly differ upon issuance of relevant authority permits



• floor plans



Basement



Ground Floor

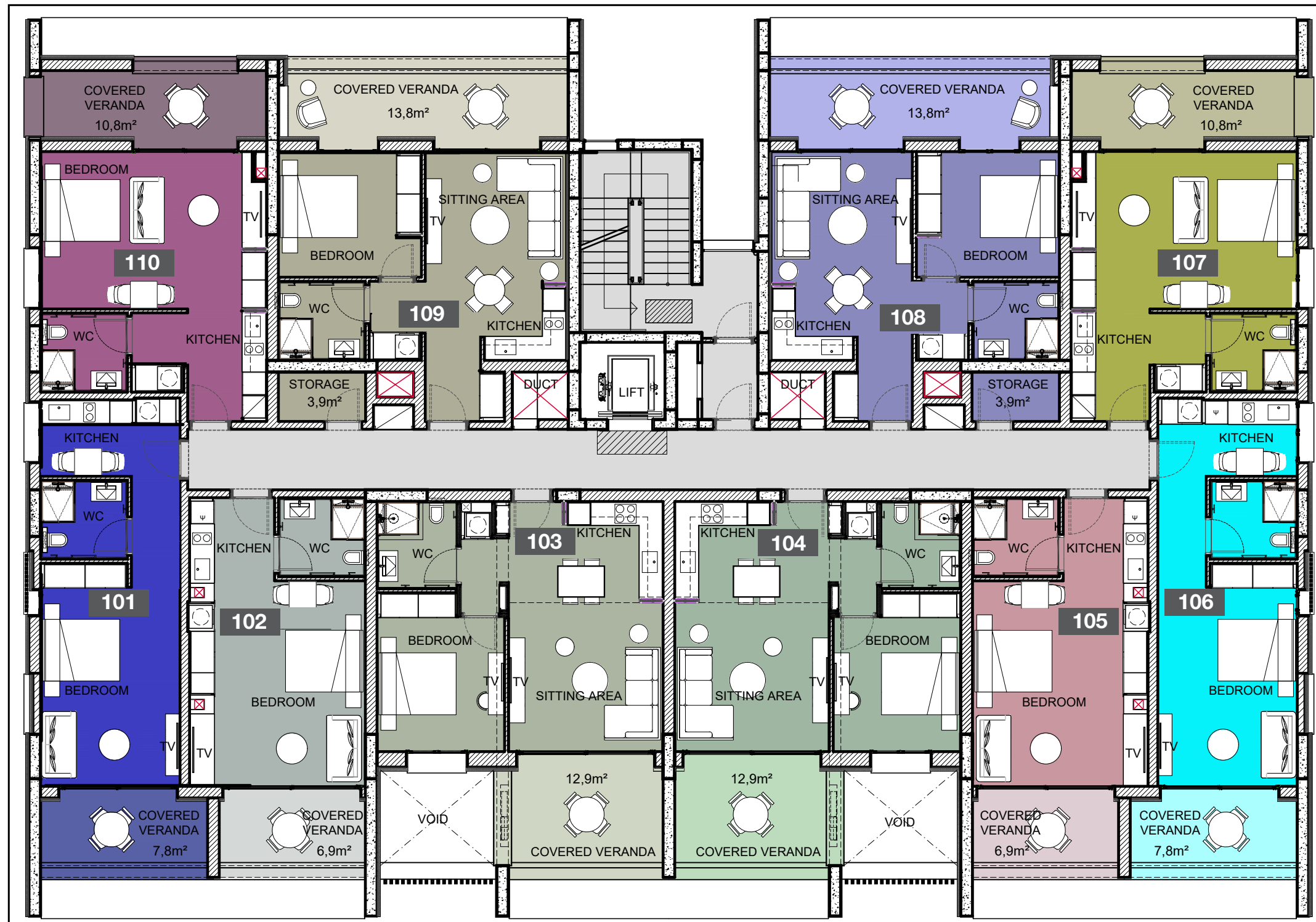


• floor plans



1st Floor

UNIT N°	TOTAL AREA M ²
101	72.87
102	67.28
103	92.94
104	92.37
105	67.99
106	78.65
107	81.68
108	89.87
109	89.87
110	82.17

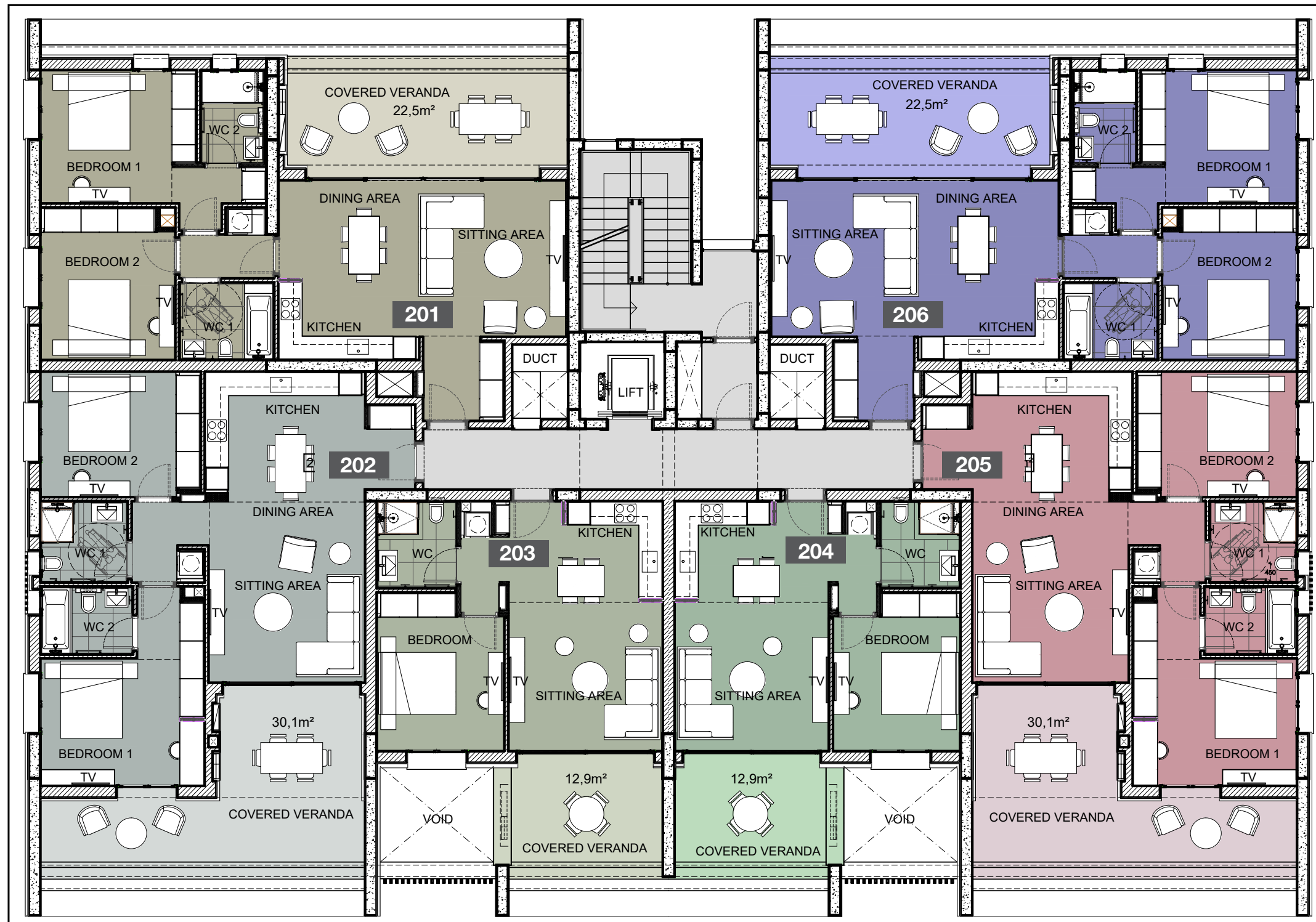


• floor plans



2nd Floor

UNIT N°	TOTAL AREA M ²
201	148.14
202	152.82
203	93.60
204	93.78
205	153.10
206	148.05

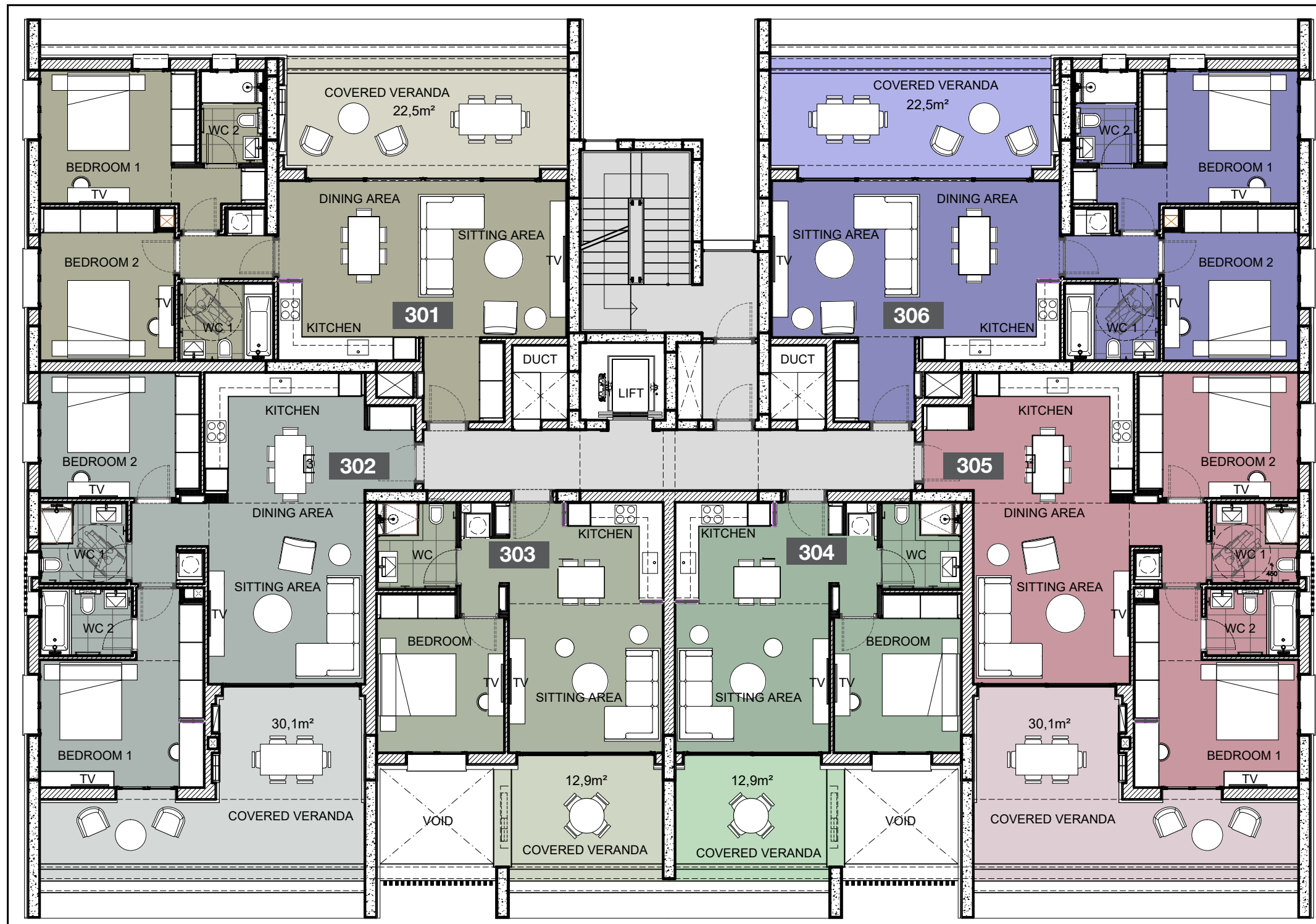


• floor plans



3rd Floor

UNIT N°	TOTAL AREA M ²
301	148.31
302	152.83
303	93.96
304	93.65
305	152.83
306	148.47

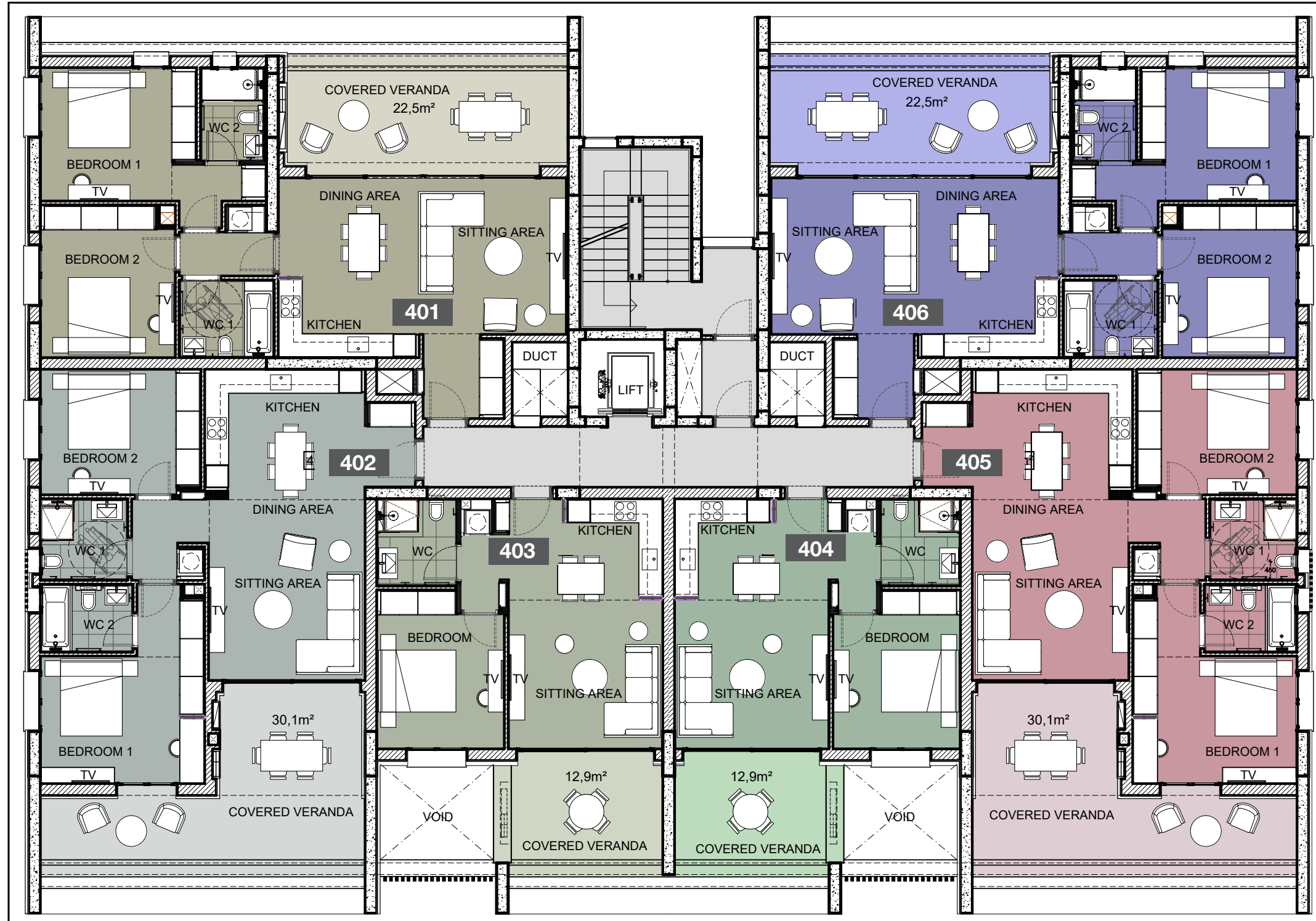


• floor plans



4th Floor

UNIT N°	TOTAL AREA M ²
401	148.54
402	153.03
403	92.99
404	93.82
405	153.03
406	148.54



• floor plans



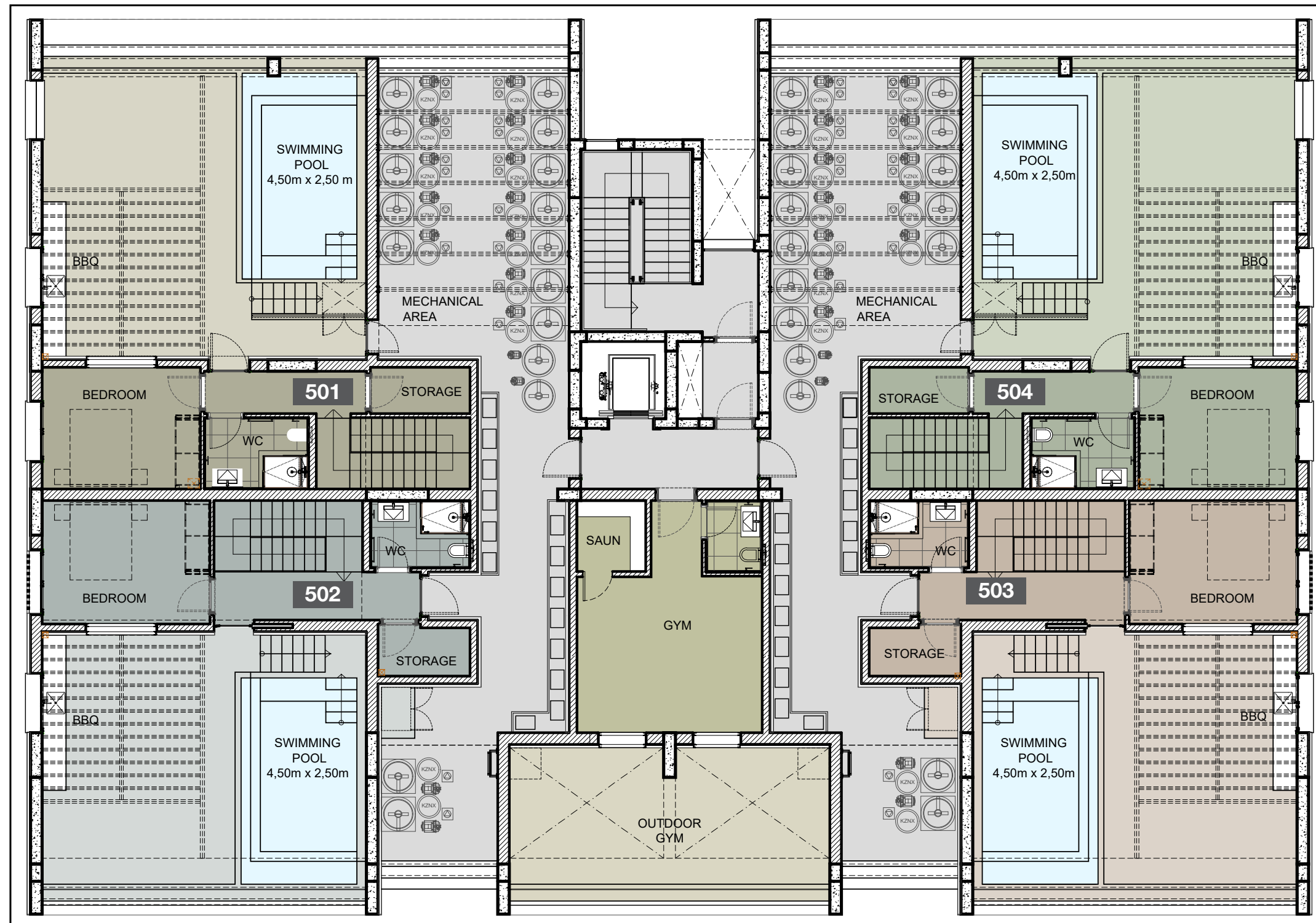
5th Floor

UNIT N°	TOTAL AREA M ²
501	314.36
502	319.88
503	320.00
504	314.48



• floor plans

roof terrace





signature finishes

bbf:prime

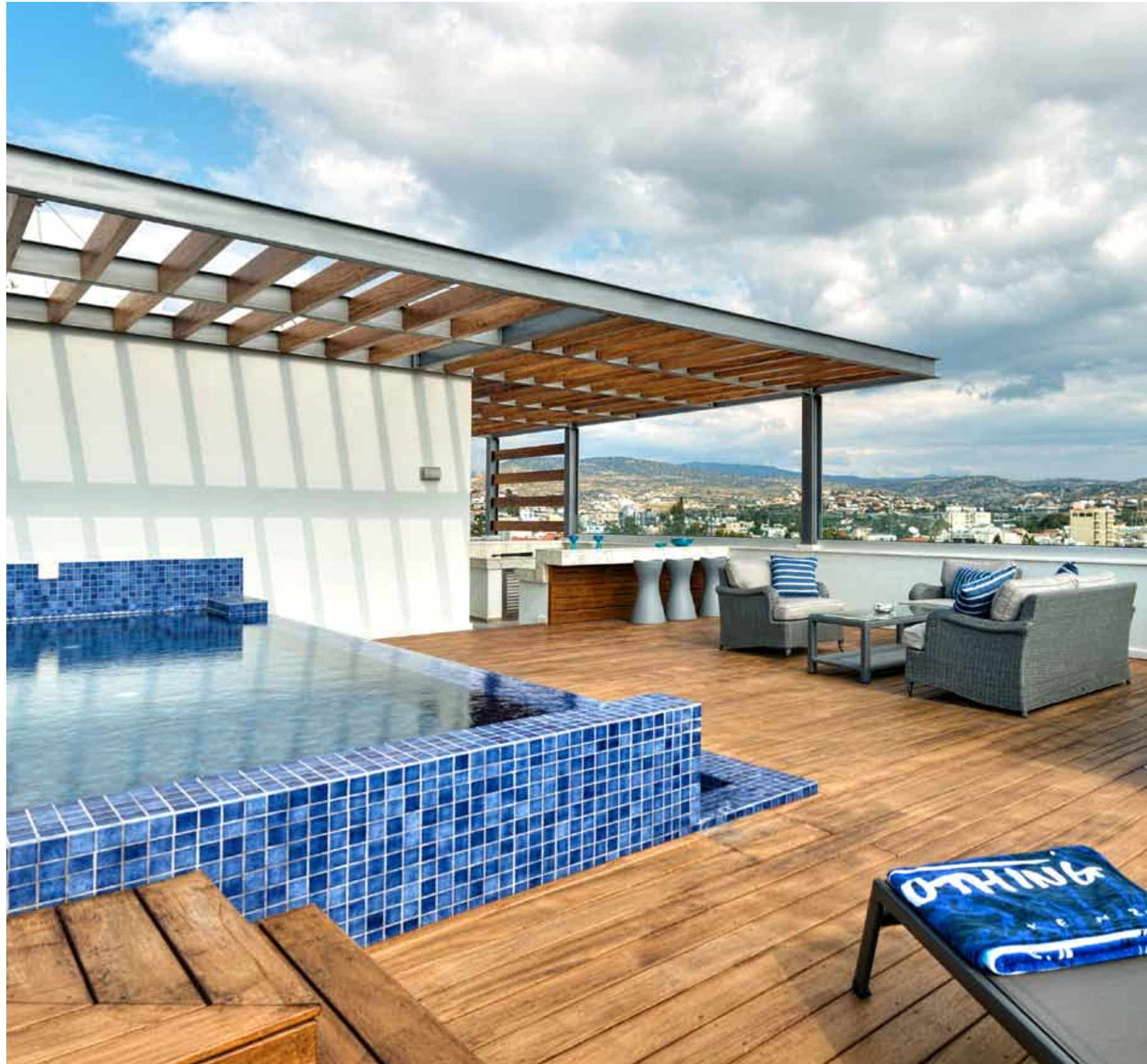
EVERY PROPERTY IS DELIVERED WITH SIGNATURE TOP STANDARD FINISHES:

- Fully completed finishings
- Semi-solid parquet floors in each room
- Marble floor and walls in the toilets and bathrooms
- High ceilings (3.15 m)
- Security and fireproof entrance doors
- Water heated floors
- Air conditioning
- High standard sanitary ware from European brands
- Thermal aluminum window frames with double glazing
- High standard kitchen cabinets
- High standard wardrobes from European brands
- Soft closers
- Door stoppers

NOTE: movable furniture, home appliances & interior items are extras



• signature finishes



bbf: penthouses

bbf® has reimagined the idea of what a penthouse should represent. The signature penthouses of bbf® are featured almost in all apartment developments and represent the best choice for a demanding and sophisticated customer who expects the best of comfort, style and privacy.

- Sizable roof space
- Stone floors
- Marble tiled swimming pool with Jacuzzi
- Barbecue
- Pergolas for shading

NOTE: movable furniture, home appliances & interior items are extras



immigration opportunities

PERMANENT RESIDENCE PERMIT

UNIQUE CYPRUS PERMANENT RESIDENCE FOR PROPERTY BUYERS

- Lifelong validity
- For all family members inc. children and parents
- Possibility to own a business in Cyprus

The Cyprus Permanent Residence Program (PRP) grants the right to travel within the EU with less elaborate visa requirements and maybe the first step towards a successful application for the Cyprus Investment Programme. We offer an "A to Z" service for non-EU citizens seeking residence in Cyprus through of buying a property.

To be granted a lifelong (permanent) residence permit in Cyprus, the applicant needs to purchase a new residential property or two new properties from the same property development company at a total price of 300 000 Euros excluding VAT. At the time of submission of the application, 200 000 Euros (excluding VAT) must be transferred in the settlements of the property and the contract of sale must be registered at the Lands Office. The issuance of the Permanent Residence Permit takes approximately 2 months from the day of submission of all relevant documentation and covers all family members, including financially dependent children under 25 years old. The Cyprus Permanent Residence Permit allows the holder to stay in Cyprus all year round.



•notes

A series of horizontal dotted lines for writing notes, spanning the width of the page.

**YOUR PERSONAL
PROPERTY CONSULTANT**

A rectangular dotted-line box intended for a signature or name.

bbf: Head office

Head Office in Limassol

28 Ampelakion Street, Germasogeia,
4046 Limassol, P.O.Box 70649, Cyprus

Office: +357 25 315 318
info@bbf.com

bbf: Greece

Office in Athens

88 Vasilissis Sofias Avenue,
115 28 Athens, Greece

Office: +30 210 775 5388
greece@bbf.com

bbf.com