

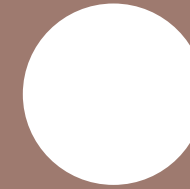


# regent court

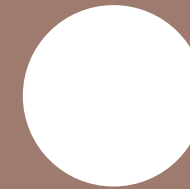


[bbf.com](http://bbf.com)

bbf:



tangible excellence and style



# regent court

**700 METERS FROM  
GOLDEN SANDY  
BEACHES**

Built for a luxury lifestyle, Regent Court is designed to create an environment that represents living at its best. Exquisite contemporary architecture enhanced by sophisticated interior features of high end design will be a place you call home.



**THE COMPLEX  
CONSISTS OF  
ONLY FIVE LUXURY  
2- AND 3-BEDROOM  
APARTMENTS  
AND ONE  
2-BEDROOM  
LUXURY  
PENTHOUSE**

delivered with high end taste. Regent Court has well thought out curated spaces for a comfortable unique luxury lifestyle. The amenities have been exceptionally designed to compliment your taste for fine living. From a sensational common swimming pool to spacious parking and from luxurious marble bathrooms to elite home comforts, Regent Court is your new luxury home.

The penthouse enjoys a spacious roof garden with a breathtaking private swimming pool overlooking a stunning panoramic city view of Limassol.



## major benefits

- 700 meters to the sandy beach of the famous eucalyptus park Dasoudi
- One of the most sought after areas of Limassol
- Outdoor swimming pool and covered parking
- Water underfloor heating and VRF air conditioning as standard

- Top standard finishes: parquet floors, high ceilings (3.10 meters), marble w/c's, security entrance doors, thermal aluminum window frames, top standard in-built furniture and sanitary ware
- Penthouse enjoying private roof terraces with pools



# introduction

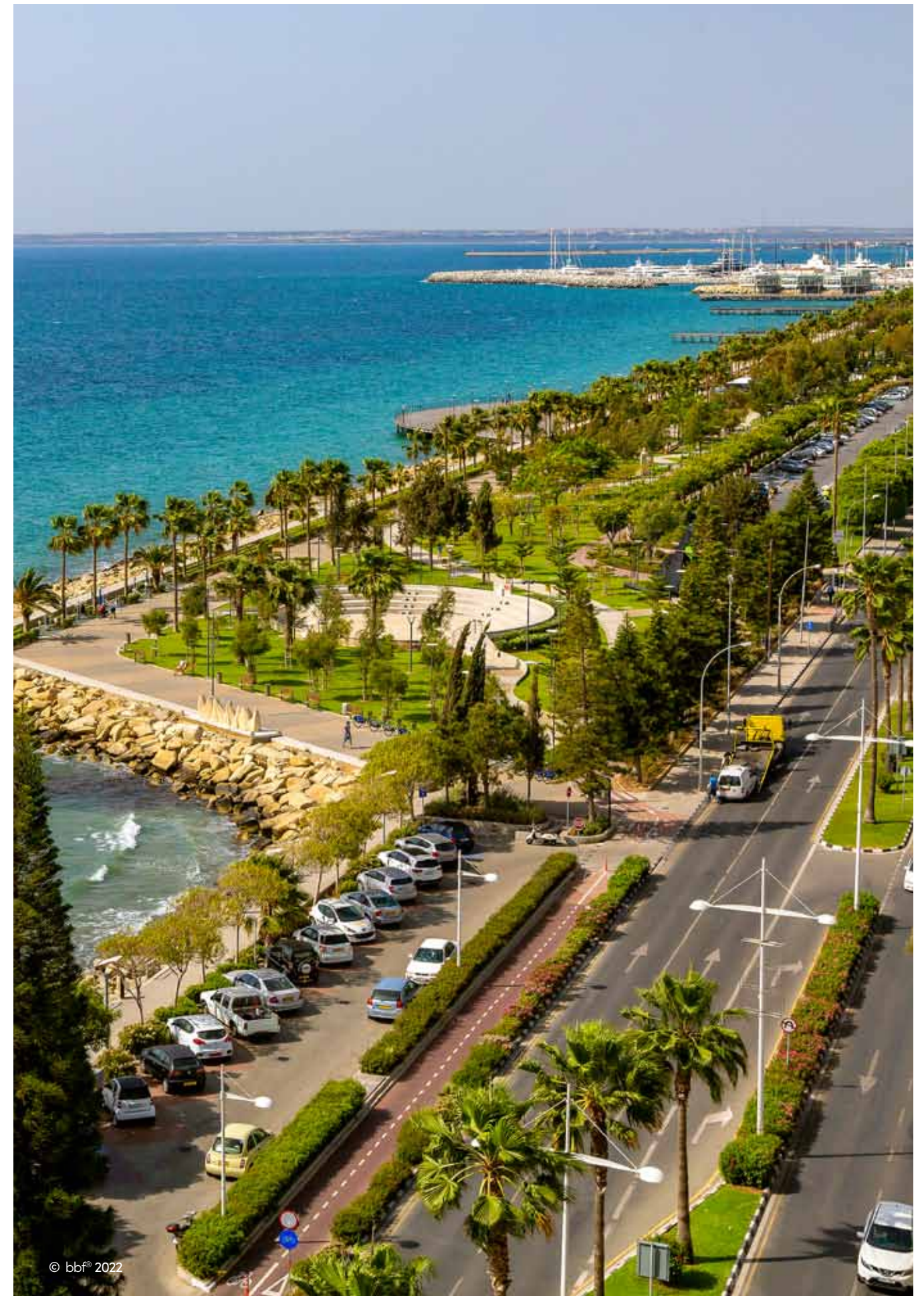
**LIMASSOL  
COMBINES  
THE FAST PACE  
OF A CITY AND  
THE COMFORT  
OF A FIRST-CLASS  
MEDITERRANEAN  
RESORT**

Limassol is the second largest urban area in Cyprus, located on the southern coast, with an urban population of 160,000 – 176,700.

Limassol was built between two ancient cities – Amathus and Kourion – and during Byzantine rule it was known as Neapolis (new town). Limassol's historical centre is located around its medieval Limassol Castle and the Old Port. Today the city spreads along the Mediterranean coast and has extended much farther than the castle and port, with its suburbs stretching along the coast to Amathus.

The history of Limassol is largely associated with the Third Crusade of Richard the Lionheart, who arrived in Limassol in 1191 on his way to the Holy Land. He arrested the renegade Byzantine Greek governor of Cyprus Limassol, Isaac Komnenos, taking over the entire island, and bringing the long Byzantine dominion of Cyprus to an end. Richard also celebrated his marriage with Berengaria who had received the crown as queen of England in Limassol. Richard destroyed Amathus and the inhabitants were transferred to Limassol.

Limassol has a Subtropical-Mediterranean climate with warm to hot and dry summers as well as very mild winters, separated by short springs and autumns which are generally pleasant.





• exterior



# luxury finishes

- Parquet floors
- Marble w/c's
- High ceilings
- Security entrance doors

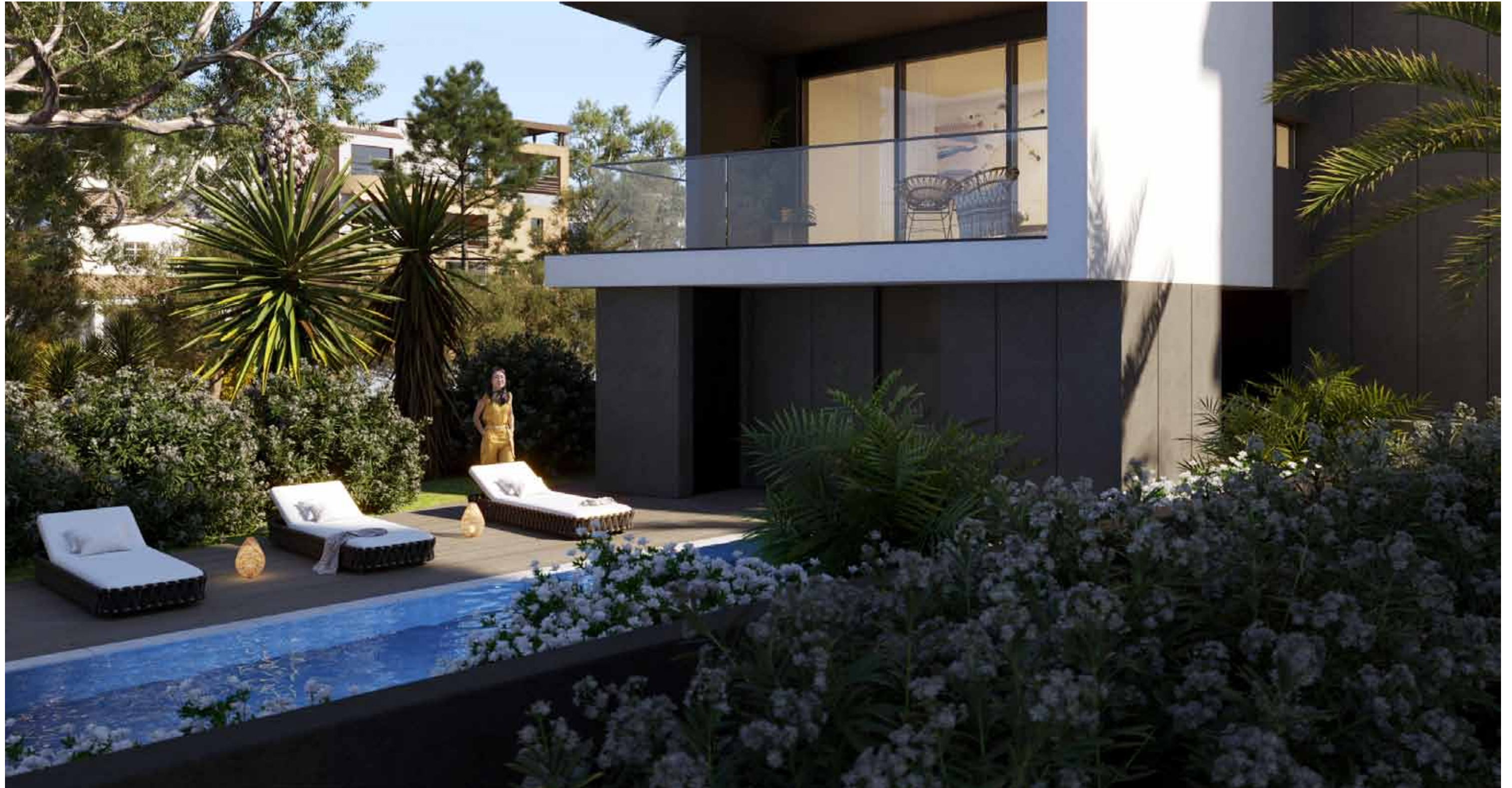
- Thermal aluminum window frames
- Top standard in-built furniture and sanitary ware



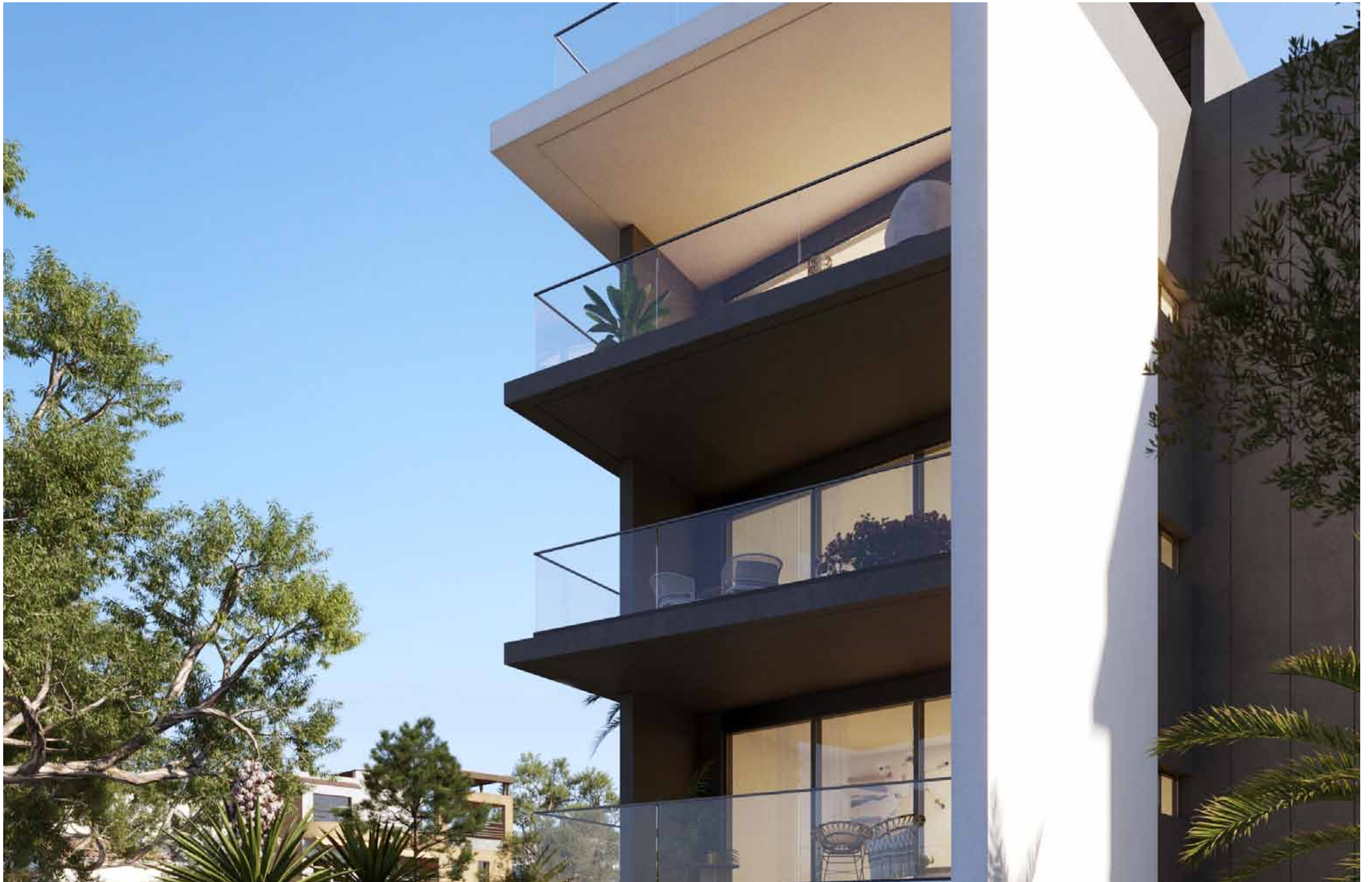


## ◉ exterior

**The development consists of only five 2- and 3- bedroom apartments and one 2-bedroom luxury penthouse**







# ◉ exterior

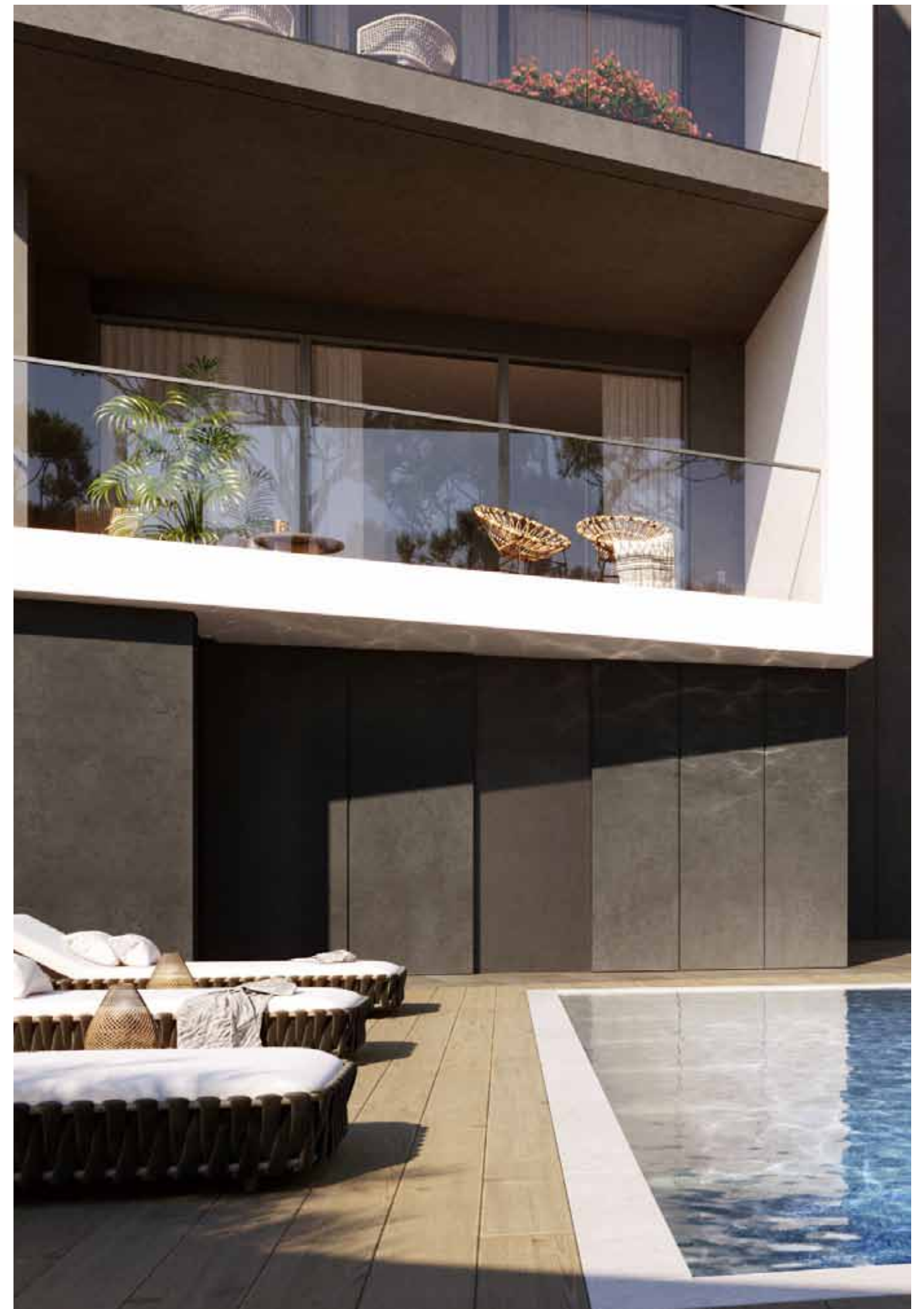
**The penthouse accompanies  
a private roof terrace  
and a private pool**



# choice of properties

FLOOR	UNIT N°	PROPERTY TYPE	PARK-ING SPACES	BED-ROOMS	BATH-ROOMS	INDOOR AREA M <sup>2</sup>	COV. VERANDA M <sup>2</sup>	SELLABLE AUX-ILIARY FLOOR AREA M <sup>2</sup>	ROOF TERRACE M <sup>2</sup>	PRIVATE POOL	STORAGE & AUXILIARY AREA M2	COMMON AREA PER UNIT M <sup>2</sup>	TOTAL AREA M <sup>2</sup>
1st	101	Apartment	1	2	2	84.73	25.73				2.91	20.13	133.50
	102	Apartment	1	3	3	118.47	23.47				3.63	25.86	171.43
2nd	201	Apartment	1	2	2	84.73	25.73				3.16	20.13	133.75
	202	Apartment	1	3	3	118.47	23.47				2.43	25.86	170.23
3rd	301	Apartment	1	2	2	84.73	25.73				2.16	20.13	132.75
	302	Penthouse	1	2	3	118.47	23.47	40.85	93.78	YES	4.33	33.31	314.21

**NOTE:** the areas stated above may slightly differ upon issuance of relevant authority permits



# • floor plans



# • floor plans



## 1st Floor

UNIT N°	TOTAL AREA M2
101	133.50
102	171.43



# floor plans



## 2st Floor

UNIT N°	TOTAL AREA M2
201	133.75
202	170.23





# floor plans



## 3st Floor

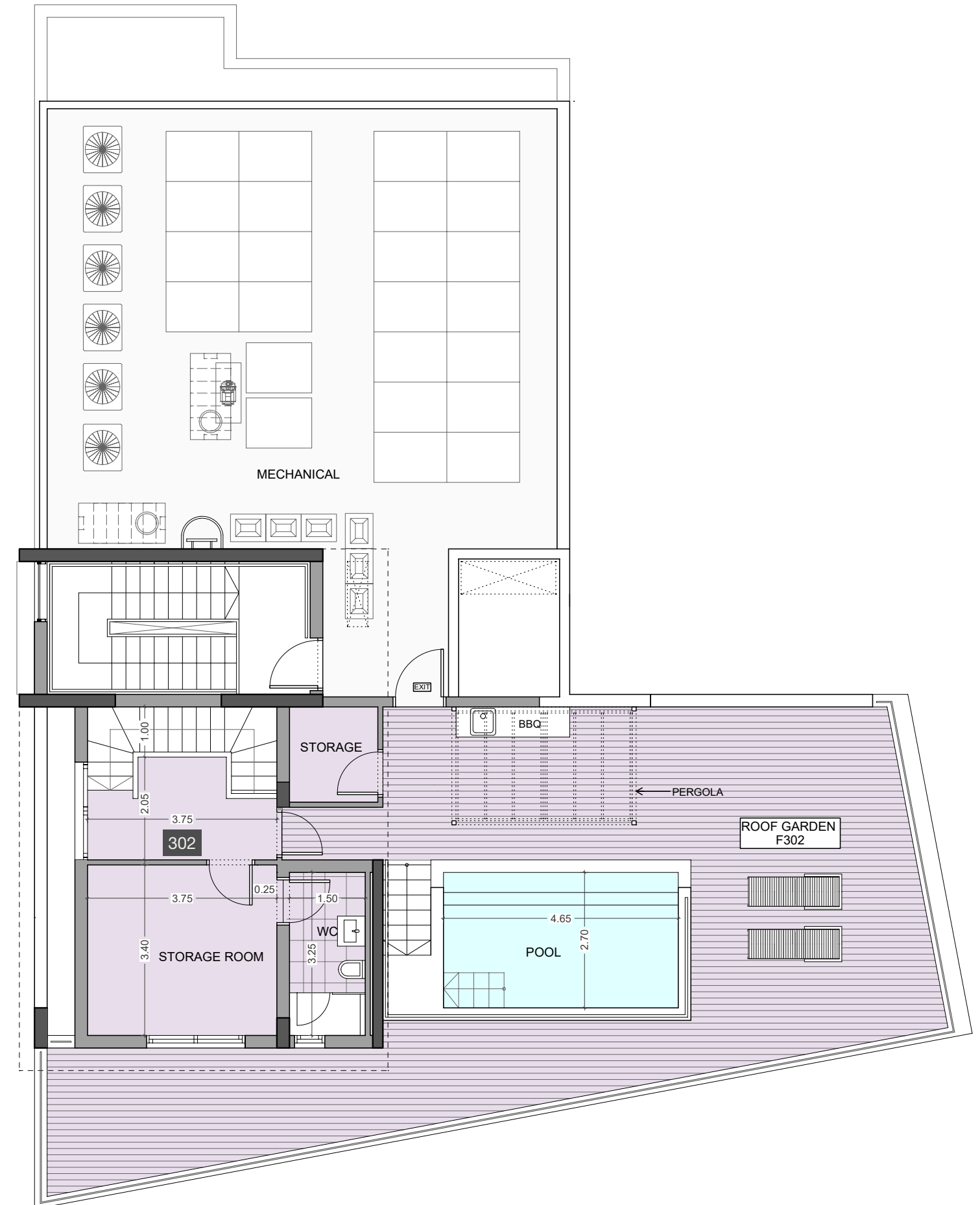
UNIT N°	TOTAL AREA M2
301	132.75
302	314.21



# • roof garden



UNIT N°	TOTAL AREA M2
302	93.78



## • signature finishes



## bbf:prime

### EVERY PROPERTY IS DELIVERED WITH SIGNATURE TOP STANDARD FINISHES:

- Fully completed finishings
- Semi-solid parquet floors in each room
- Marble floor and walls in the toilets and bathrooms
- High ceilings (3.15 m)
- Security and fireproof entrance doors
- Water heated floors
- Air conditioning
- High standard sanitary ware from European brands
- Thermal aluminum window frames with double glazing
- High standard kitchen cabinets
- High standard wardrobes from European brands
- Soft closers
- Door stoppers

**NOTE:** movable furniture, home appliances & interior items are extras



## • signature finishes



## bbf: penthouses

bbf® has reimagined the idea of what a penthouse should represent. The signature penthouses of bbf® are featured almost in all apartment developments and represent the best choice for a demanding and sophisticated customer who expects the best of comfort, style and privacy.

- Sizable roof space
- Stone floors
- Mosaic tiled swimming pool with jacuzzi
- Barbecue
- Pergolas for shading

**NOTE:** movable furniture, home appliances & interior items are extras



# immigration opportunities

## PERMANENT RESIDENCE PERMIT

### UNIQUE CYPRUS PERMANENT RESIDENCE FOR PROPERTY BUYERS

- Lifelong validity
- For all family members inc. children and parents
- Possibility to own a business in Cyprus

The Cyprus Permanent Residence Program (PRP) grants the right to travel within the EU with less elaborate visa requirements and maybe the first step towards a successful application for the Cyprus Investment Programme. We offer an "A to Z" service for non-EU citizens seeking residence in Cyprus through of buying a property.

To be granted a lifelong (permanent) residence permit in Cyprus, the applicant needs to purchase a new residential property or two new properties from the same property development company at a total price of 300000 Euros excluding VAT. At the time of submission of the application, 200000 Euros (excluding VAT) must be transferred in the settlements of the property and the contract of sale must be registered at the Lands Office. The issuance of the Permanent Residence Permit takes approximately 2 months from the day of submission of all relevant documentation and covers all family members, including financially dependent children under 25 years old. The Cyprus Permanent Residence Permit allows the holder to stay in Cyprus all year round.





## bbf: Head office

### Head Office in Limassol

28 Ampelakion Street, Germasogeia,  
4046 Limassol, P.O.Box 70649, Cyprus

**Office:** +357 25 315 318

[info@bbf.com](mailto:info@bbf.com)

## bbf: Greece

### Office in Athens

88 Vasilissis Sofias Avenue,  
115 28 Athens, Greece

**Office:** +30 210 775 5388

[greece@bbf.com](mailto:greece@bbf.com)

[bbf.com](http://bbf.com)