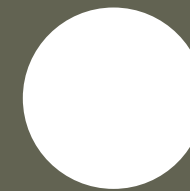




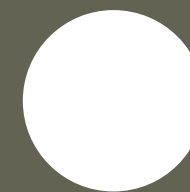
rise



bbf:



rise, there is no limit!



Architecturally, these one block apartments were inspired by a Mediterranean vibe which blends seamlessly with the natural beauty of the coastline

This block consists of nine spacious apartments and two luxurious penthouses, that boast opulent living and dining spaces. Each apartment is curated with the best high quality materials and high finish standards, where premium aesthetics fuse with elevated high spec functionality.



Residents will experience pleasing qualities with balance of colour, shape and movement, complimenting functionality with attractive layouts

Enjoy an ultimate dream home that boasts an open air swimming pool with carefully manicured gardens, overlooking a city of dreams. Luxurious penthouses offer beautifully designed private swimming pools with comfortable lounge roof terraces and stunning views of the dazzling city itself.



major benefits

- Contemporary residence in a tranquil residential area in Limassol tourist area;
- Stunning views of the dazzling city;
- 700 meters to golden sandy beaches and 5-star hotel Apollonia;
- Common swimming pool and gym
- High ceilings (3.15 meters);

- High standards of finish;
- Under floor heating and central VRF conditioning;
- Penthouses with private roof terraces and private swimming pools;
- Storage rooms;
- Private covered parking.



:location

A world of luxury, leisure and entertainment is nestled in a quiet neighbourhood of Germasogeia

From sports to active pursuits to culture and business, this is more than just a place to live! Here residences will have access to a Mediterranean resort at their doorsteps, from your personal well-being and fitness to recharging and revitalising, you will have it all. Germasogeia is well known for its glamour, from high class restaurants to five star hotels and from remarkable food stores to high end boutiques, Germasogeia has it all!



- 1 Limassol's Olympic Swimming Pool
- 2 Filippou Papadopoulos Pharmacy
- 3 The Garden Restaurant
- 4 Starbucks
- 5 Ocean Basket
- 6 Costa Coffee
- 7 Plus Discount Market
- 8 Cyprus Post Office
- 9 Christina Metaxa Pharmacy
- 10 Sigma Bakery
- 11 Pet Shop
- 12 Atlantica Miramare
- 13 The Royal Apollonia 5-star



- SYMBOLS
- Hotels
 - Marina
 - Highway
 - Office of BBF

• exterior



**700 meters to golden
sandy beaches and
5-star hotel Apollonia**



◉ exterior



*All 3D images and photographs consist of indicative information and the project can differ insignificantly from the displayed images. Furniture and interior items are extras.

• exterior



**contemporary residence
in a tranquil residential
area in Limassol tourist
area**



*All 3D images and photographs consist of indicative information and the project can differ insignificantly from the displayed images. Furniture and interior items are extras.

• exterior

**penthouses with private
roof terraces and private
swimming pools**



interior



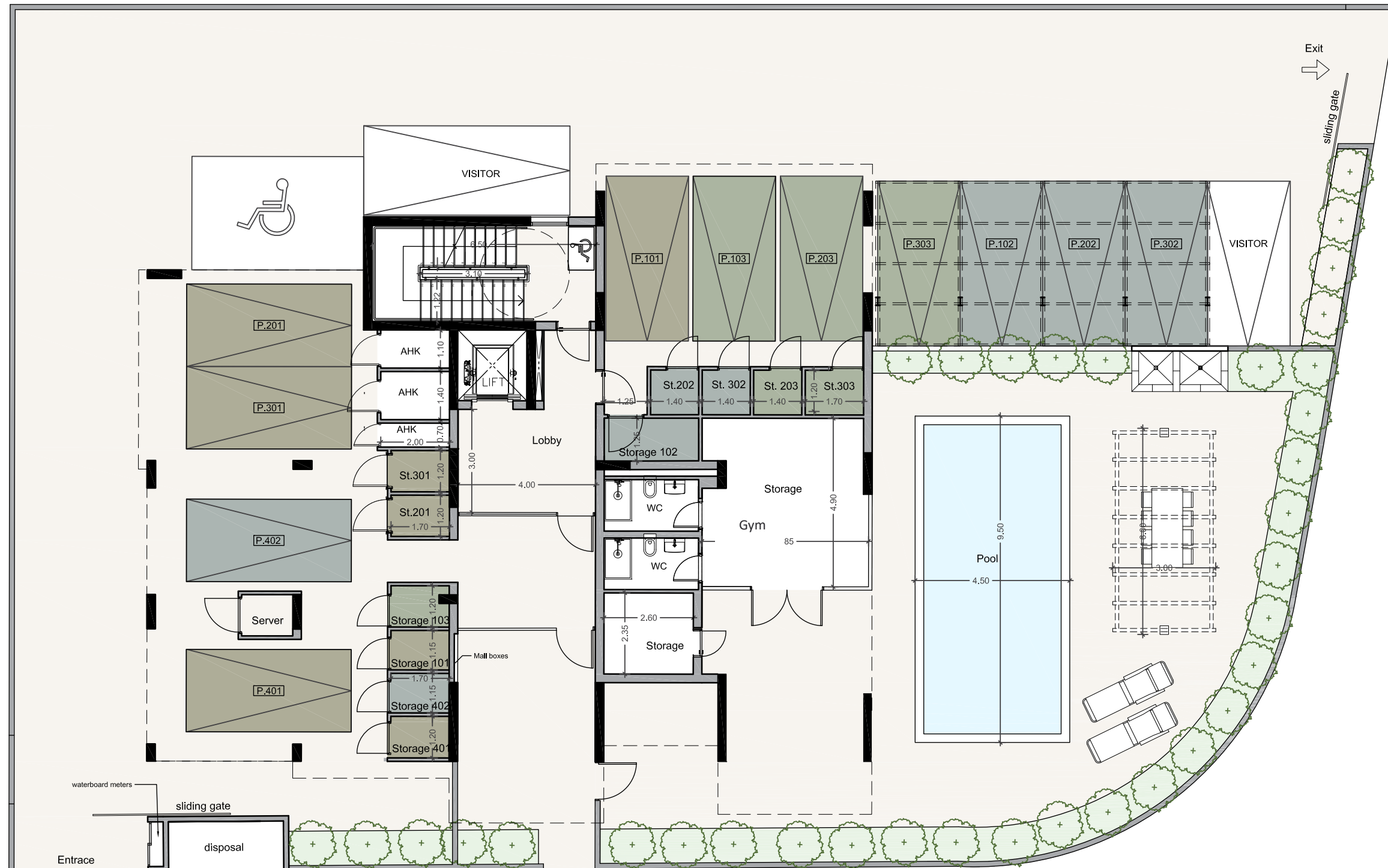
•choice of properties



UNIT N°	PROPERTY TYPE	BED-ROOMS	BATH-ROOMS	NO OF PARK SPACES	INDOOR AREA M²	COV. VERANDA M²	AUXILIARY AREA M²		PRIVATE POOL	ROOF TER-RACE M²	POOL M²	STOR-AGE M²	COM-MON AREA M²	TOTAL AREA M²
							FLOOR	AREA						
101	Apartment	2	2	1	90.38	33.00						2.67	25.86	151.91
102	Apartment	1	1	1	57.10	13.51						4.38	14.80	89.79
103	Apartment	2	2	1	92.36	21.00						2.86	23.76	139.98
201	Apartment	2	2	1	90.38	33.00						2.92	25.86	152.16
202	Apartment	1	1	1	57.10	13.51						2.24	14.80	87.65
203	Apartment	2	2	1	92.36	21.00						2.25	23.76	139.37
301	Apartment	2	2	1	90.38	33.00						2.90	25.86	152.14
302	Apartment	1	1	1	57.10	13.51						2.25	14.80	87.66
303	Apartment	2	2	1	92.36	21.00						3.00	23.76	140.12
401	Penthouse	3	4	1	124.45	44.65	5th	32.25	YES	61.75	20.70	2.93	42.19	328.92
402	Penthouse	2	4	1	123.00	24.95	5th	36.15	YES	59.20	20.70	2.68	38.58	305.26

NOTE: the areas stated above may slightly differ upon issuance of relevant authority permits

ground floor

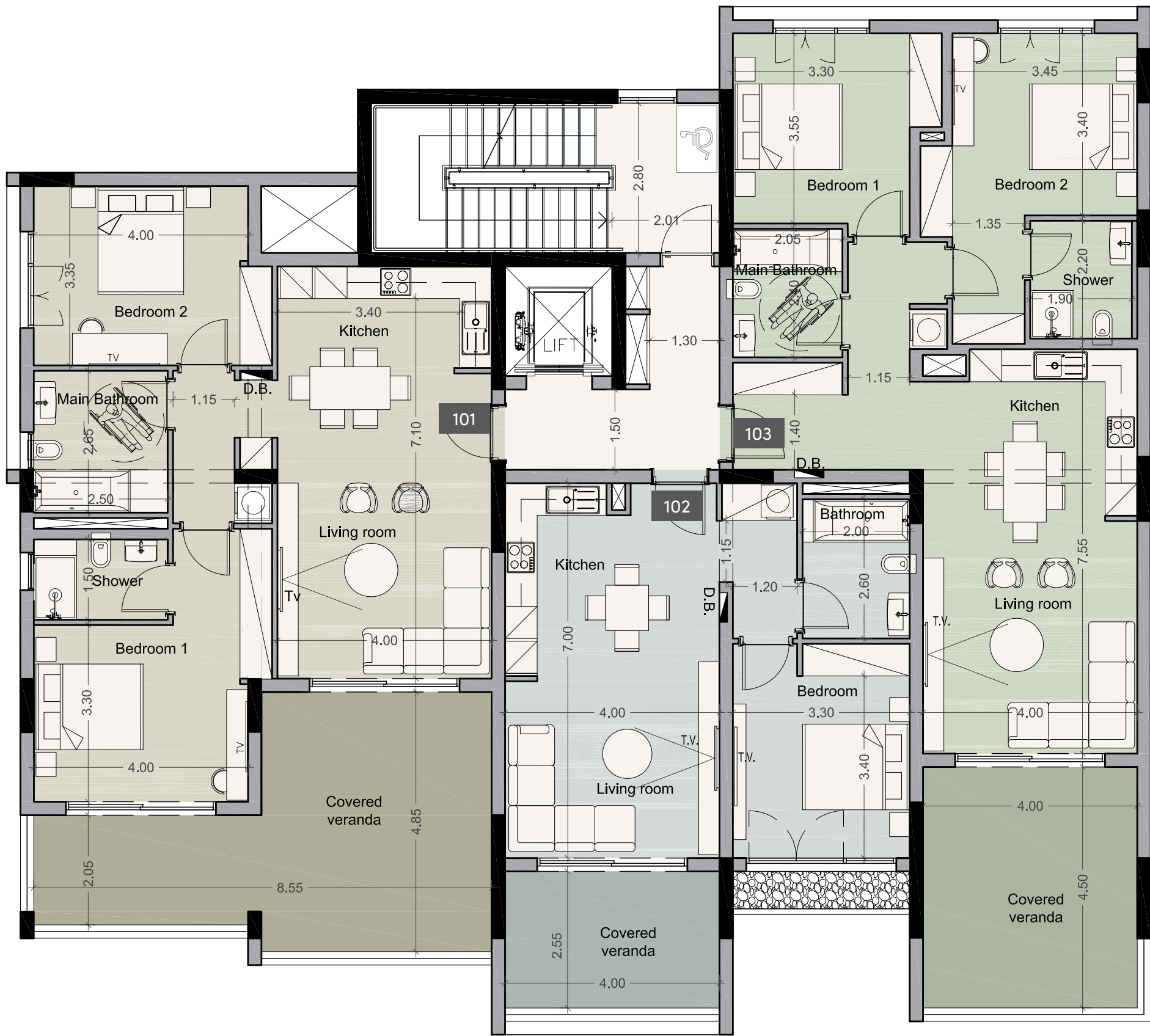


• floor plans



1st floor

UNIT N°	TOTAL AREA M²
101	151.91
102	89.79
103	139.98

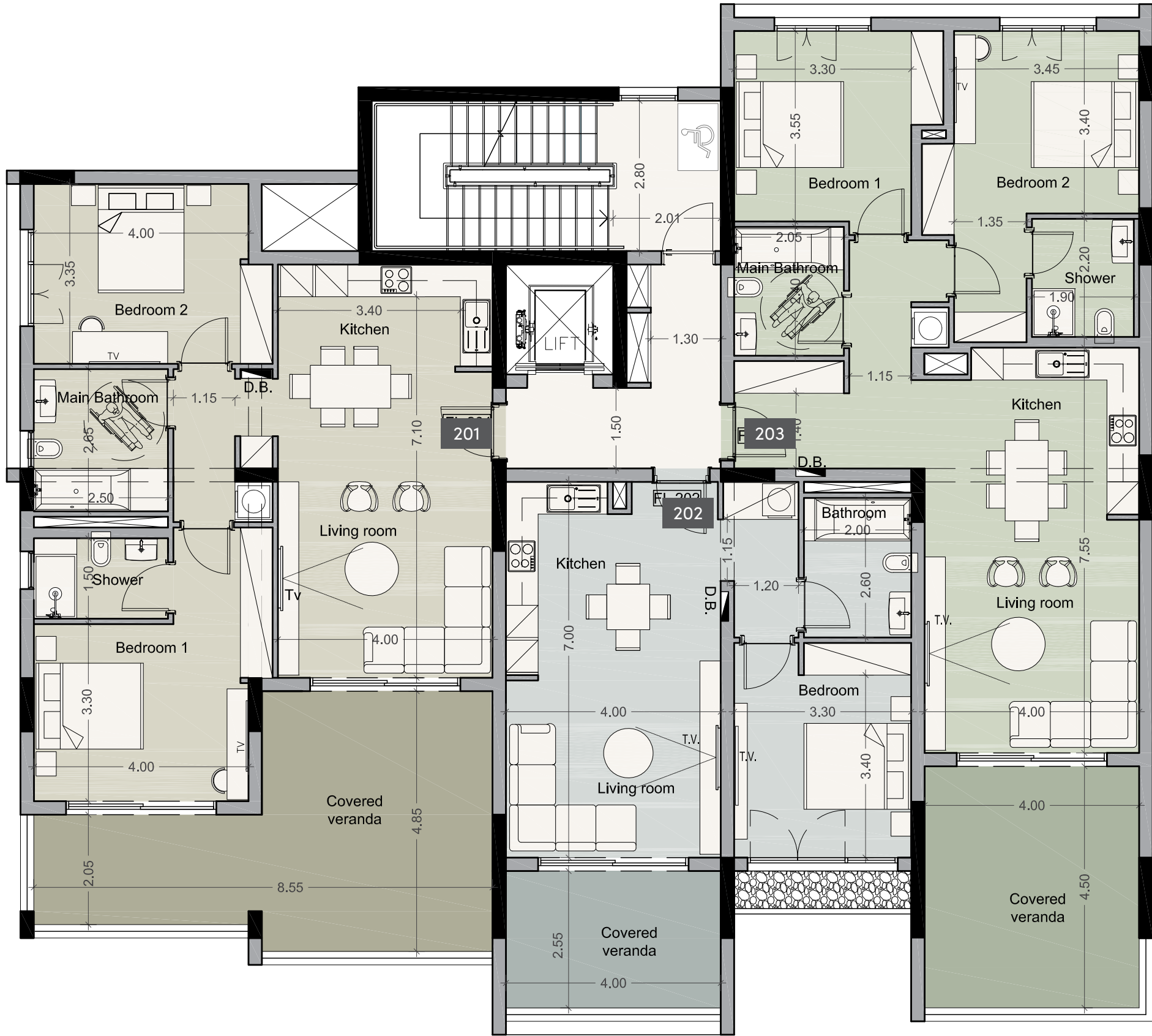


• floor plans



2nd floor

UNIT N°	TOTAL AREA M²
201	152.16
202	87.65
203	139.37

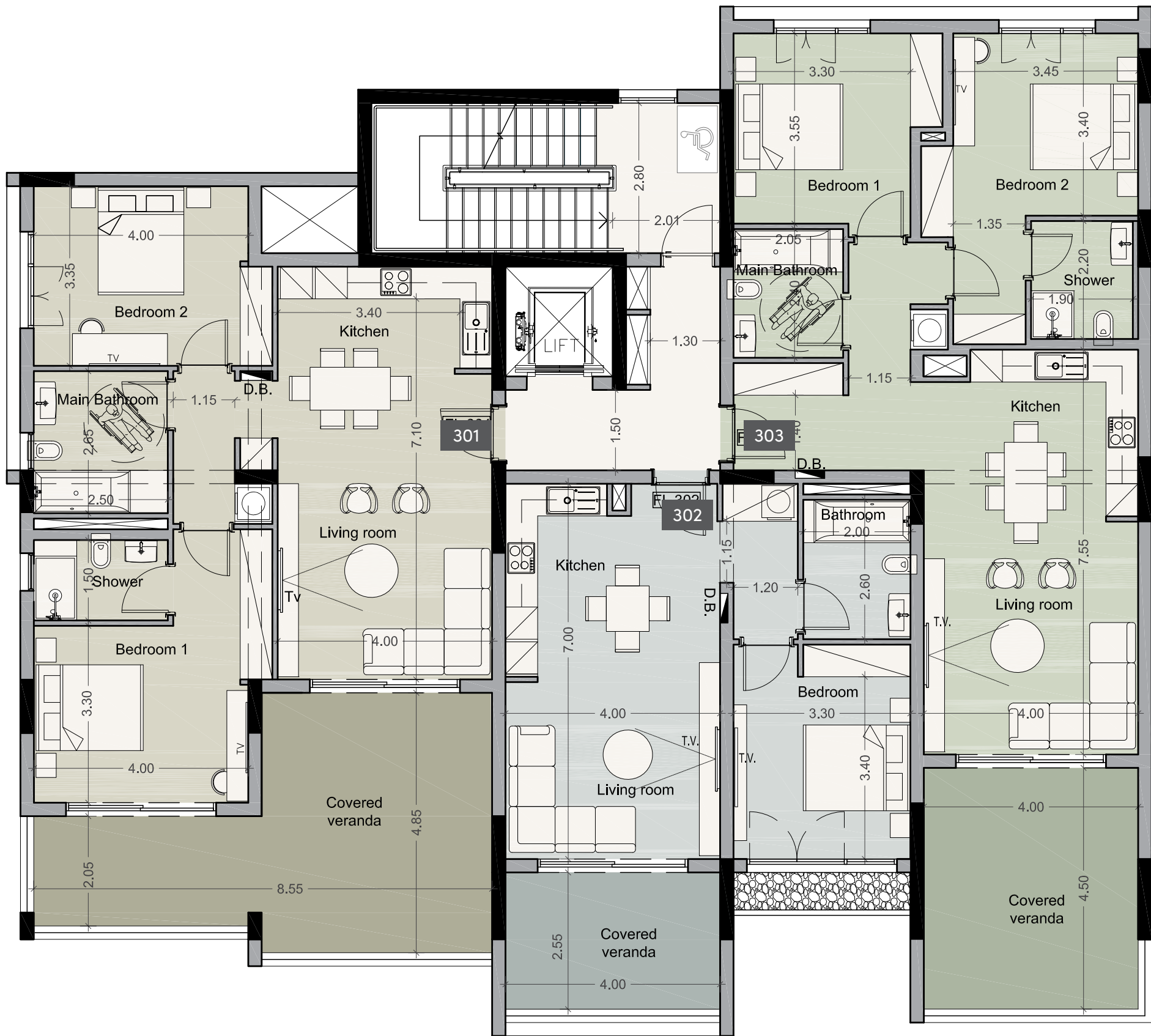


• floor plans



3rd floor

UNIT N°	TOTAL AREA M²
301	152.14
302	87.66
303	140.12

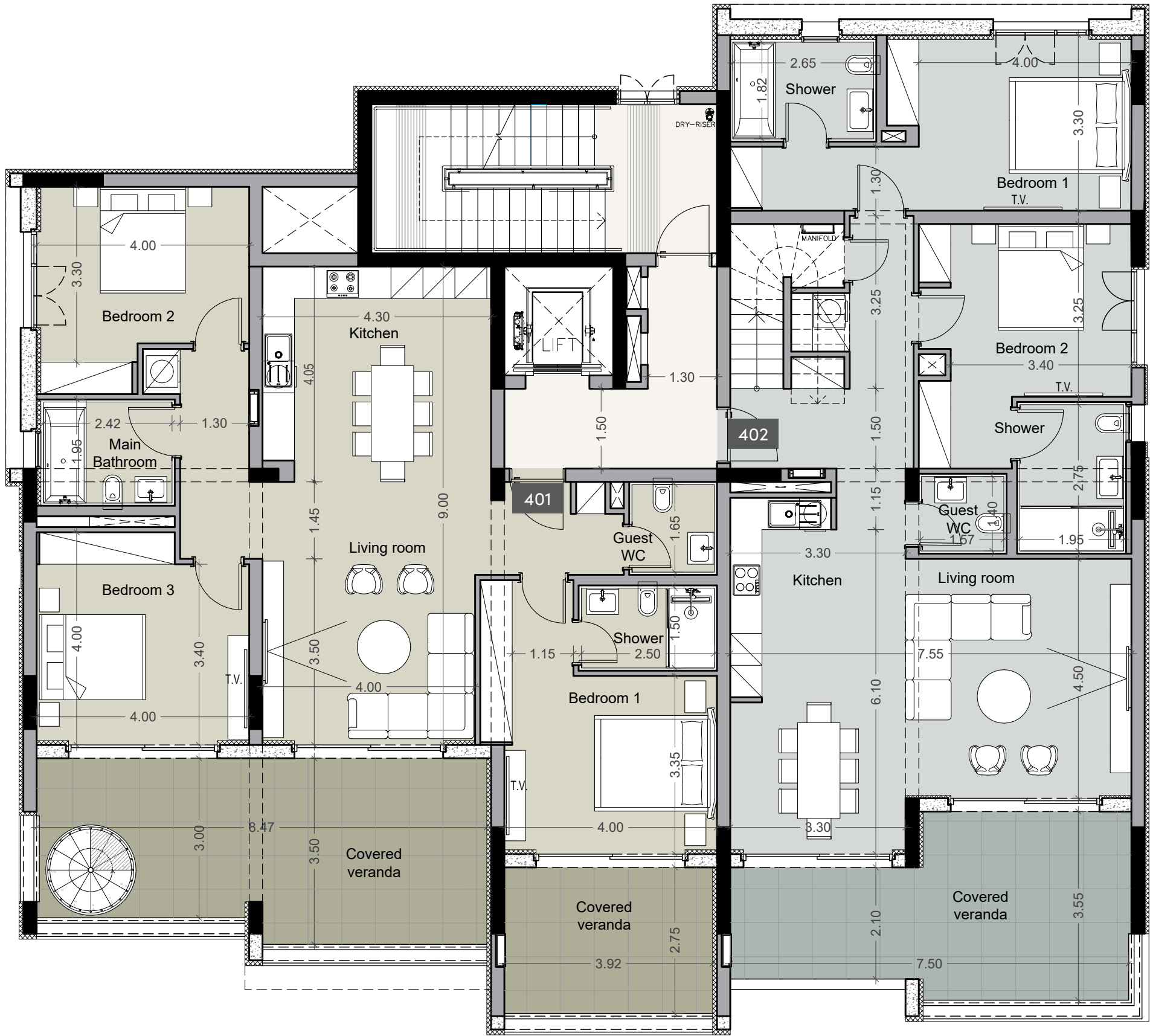


• floor plans



4th floor

UNIT N°	TOTAL AREA M ²
401	328.92
402	305.26



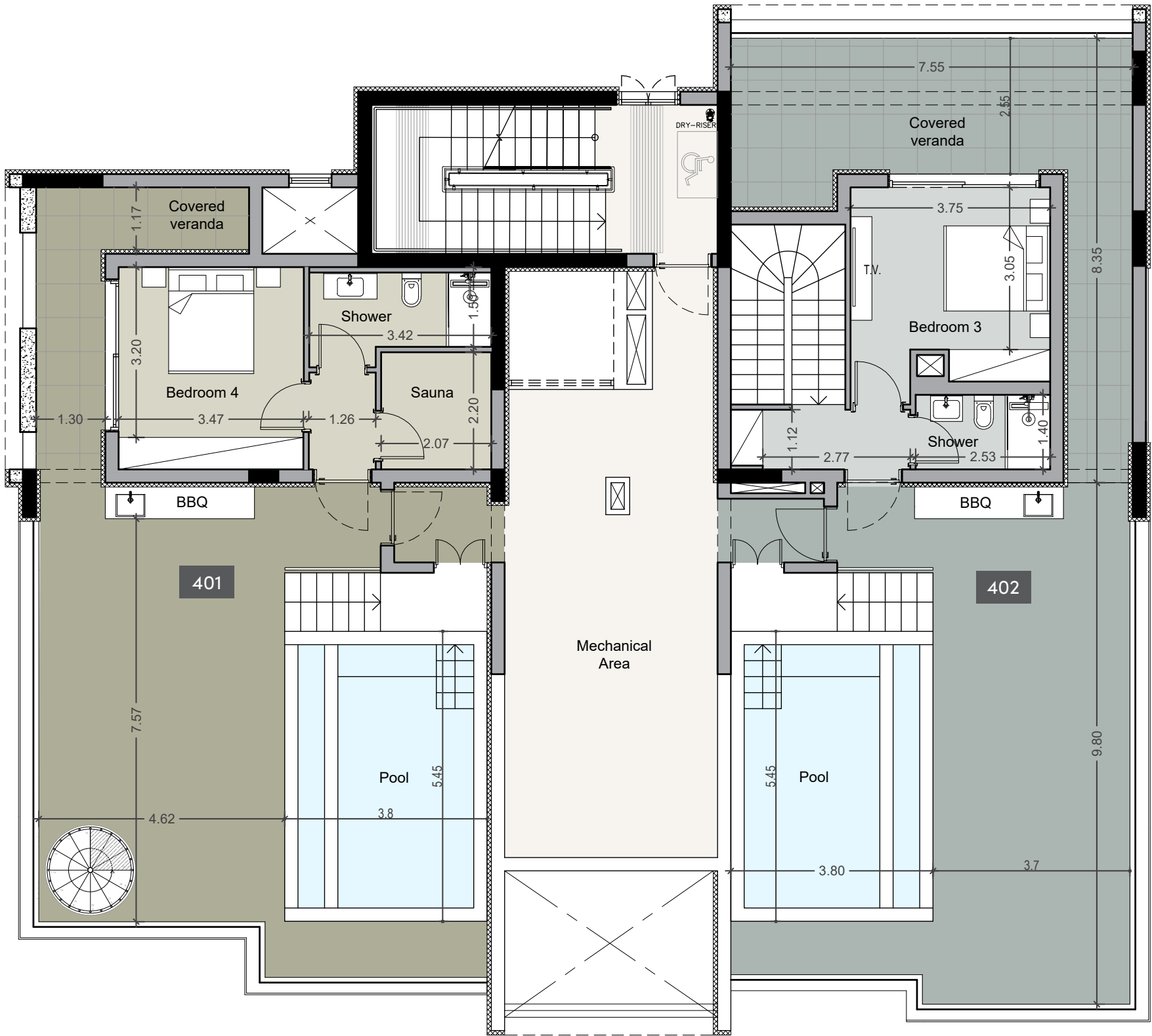
*Floor plans show approximate measurements only. The exact layout and sizes may vary

• floor plans



roof garden

UNIT N°	TOTAL AREA M²
401	61.75
402	59.20



•signature finishes

bbf:prime

Every property is delivered with signature top standard finishes:

- Fully completed finishings;
- Semi-solid parquet floors in each room;
- Marble floor and walls in the toilets and bathrooms;
- High ceilings (3.15 m);
- Security and fireproof entrance doors;
- Water heated floors;
- Air conditioning;
- High standard sanitary ware from European brands;
- Thermal aluminum window frames with double glazing;
- High standard kitchen cabinets;
- High standard wardrobes from European brands;
- Soft closers;
- Door stoppers.

Note: movable furniture, home appliances & interior items are extras



bbf: Head office

Head Office in Limassol

28 Ampelakion Street, Germasogeia,
4046 Limassol, P.O.Box 70649, Cyprus

Office: +357 25 315 318
info@bbf.com

bbf: Greece

Office in Athens

88 Vasilissis Sofias Avenue,
115 28 Athens, Greece

Office: +30 210 775 5388
greece@bbf.com



bbf.com