



RESIDENTIAL LUXURY BUILDING



CREATED TO INDULGE
YOUR SENSES

600 METERS FROM
THE BEST SANDY
BEACH OF PAFOS
TOURIST AREA



DESCRIPTION

This stylish residential luxury building is designed to offer residents a refined urban living experience. Heritage is an elegant masterpiece that consists of 31 luxurious units: 1-, 2-, 3-bedroom apartments and 3 bedroom penthouses with its own roof terrace and private pools. The carefully designed master plan and high quality finishing materials, coupled with an outstanding design, will satisfy those who value true comfort and style. The residents will enjoy spacious layouts and ample facilities such as common swimming pool, gym and covered parking. Solid wood parquet floors, marble bathrooms, high-quality kitchens, built-in wardrobes and ceilings more than 3 meters, are only few of the many advantages this project offers making it ideal for your lifestyle and investment purposes.

MAJOR BENEFITS

- SEA VIEWS
- 600 METERS FROM THE BEST SANDY BEACH OF PAFOS TOURIST AREA
- CITY AMENITIES AROUND THE CORNER
- 2 MINUTES WALK FROM THE 5-STAR ELYSIUM HOTEL
- 5 MINUTES WALK TO THE KINGS AVENUE MALL
- GATED COMPOUND WITH COMMON SWIMMING POOL, GYM AND COVERED PARKING
- SPACIOUS LAYOUTS
- HIGH STANDARD FINISHES
- UNDER FLOOR HEATING AND CENTRAL AIR CONDITIONING
- HIGH CEILINGS
- TOP STANDARD FINISHES
- PENTHOUSES WITH PRIVATE ROOF GARDENS AND POOLS



INTRODUCTION

Paphos is a city on the southwest coast of the Mediterranean island of Cyprus. Inhabited since Neolithic times, it has several sites relating to the cult of goddess Aphrodite, whose mythical birthplace was at Old Paphos (Kouklia). New Paphos is the modern city that incorporates the harbor, and the ancient ruins of tombs, fortresses, theaters and villas at Paphos Archaeological Park.



LOCATION

The Arts and cultural district is a burgeoning urban residential neighborhood only moments away from the sea connecting fine culinary and entertainment. The inspiration behind Heritage is to create an environment that combines the core elements of a true luxury urban lifestyle with the energy, culture and vibe of Paphos's exhilarating Arts and Entertainment District, an area recognized as the most enjoyable region of Cyprus.





2 MINUTES WALK FROM
THE 5-STAR ELYSIUM HOTEL

*All 3D images consist of indicative information and the projects can differ insignificantly from the displayed images



LUXURY FINISHES:

PARQUET FLOORS IN LIVING AREAS & BEDROOMS,
MARBLE FLOORS & WALLS IN BATHROOMS,
KITCHEN CABINETS FROM KNOWN BRANDS,
DOUBLE GLAZED WINDOWS WITH ALUMINUM FRAMES,
FIRST CLASS SANITARY WARE

CHOICE OF PROPERTIES

BLOCK A

Floor	Property	Type	Bedrooms	Bathrooms	Indoor area sq.m.	Covered veranda sq.m.	Uncovered veranda sq.m.	Roof terrace sq.m.	Private Pool	Common area sq.m.	Storage sq.m.	No of parking spaces	Total area sq.m.
1	101	APARTMENT	3	2	107.50	31.45			NO	43.99	3.90	1	186.84
	102	APARTMENT	1	1	59.30	21.40			NO	25.55	3.00	1	109.25
2	201	APARTMENT	3	2	107.50	31.45			NO	43.99	3.60	1	186.54
	202	APARTMENT	1	1	59.30	21.40			NO	25.55	3.60	1	109.85
3	301	PENTHOUSE	3	3	107.30	25.80	5.95	123.65	YES	42.14	10.05	1	314.89
	302	APARTMENT	1	1	59.30	21.40			NO	25.55	3.55	1	109.8

BLOCK B

Floor	Property	Type	Bedrooms	Bathrooms	Indoor area sq.m.	Covered veranda sq.m.	Uncovered veranda sq.m.	Roof terrace sq.m.	Private Pool	Common area sq.m.	Storage sq.m.	No of parking spaces	Total area sq.m.
1	101	APARTMENT	2	2	85.70	21.40			NO	26.77	2.85	1	136.72
	102	APARTMENT	1	1	63.00	16.30			NO	19.82	4.90	1	104.02
	103	APARTMENT	2	2	86.00	33.80			NO	29.95	13.00	1	162.75
	104	APARTMENT	2	2	83.55	28.65			NO	28.05	5.10	1	145.35
	105	APARTMENT	2	2	84.85	14.15			NO	24.75	3.10	1	126.85
2	201	APARTMENT	2	2	85.70	21.40			NO	26.77	2.95	1	136.82
	202	APARTMENT	1	1	63.00	16.30			NO	19.82	4.20	1	103.32
	203	APARTMENT	2	2	86.00	33.80			NO	29.95	2.95	1	152.70
	204	APARTMENT	2	2	83.55	28.65			NO	28.05	6.60	1	146.85
	205	APARTMENT	2	2	84.85	14.15			NO	24.75	7.30	1	131.05
3	301	PENTHOUSE	2	3	85.70	21.40		91.75	YES	26.77	9.05	1	234.67
	302	APARTMENT	1	1	63.00	16.30			NO	19.82	4.20	1	103.32
	303	PENTHOUSE	2	3	86.00	33.80		86.20	YES	29.95	18.30	1	254.25
	304	PENTHOUSE	3	4	120.00	38.50	53.80	83.50	YES	39.62	11.05	2	346.47

BLOCK C

Floor	Property	Type	Bedrooms	Bathrooms	Indoor area sq.m.	Covered veranda sq.m.	Uncovered veranda sq.m.	Roof terrace sq.m.	Private Pool	Common area sq.m.	Storage sq.m.	No of parking spaces	Total area sq.m.
1	101	APARTMENT	2	2	88.00	45.65			NO	33.41	5.55	1	172.61
	102	APARTMENT	2	2	84.50	18.00			NO	25.62	6.50	1	134.62
	103	APARTMENT	2	2	85.30	13.80			NO	24.77	7.15	1	131.02
2	104	APARTMENT	3	3	115.25	33.00	5.50		NO	37.06	7.15	1	197.96
	201	APARTMENT	2	2	88.00	44.00			NO	33.00	8.10	1	173.10
	202	APARTMENT	2	2	84.50	15.15			NO	24.91	5.95	1	130.51
	203	APARTMENT	2	2	85.30	11.90			NO	24.30	4.75	1	126.25
3	204	APARTMENT	3	3	115.25	32.65			NO	36.97	6.10	1	190.97
	301	PENTHOUSE	3	3	103.65	28.40		80.70	YES	33.01	13.50	1	259.26
	302	PENTHOUSE	3	4	121.40	30.40	45.25	72.75	YES	37.94	13.40	2	321.14
303	PENTHOUSE	3	4	115.25	32.65		78.45	YES	36.97	16.45	1	279.77	

NOTE: the areas stated above may slightly differ upon issuance of relevant authority permits



*All 3D images consist of indicative information and the projects can differ insignificantly from the displayed images



BLOCK C

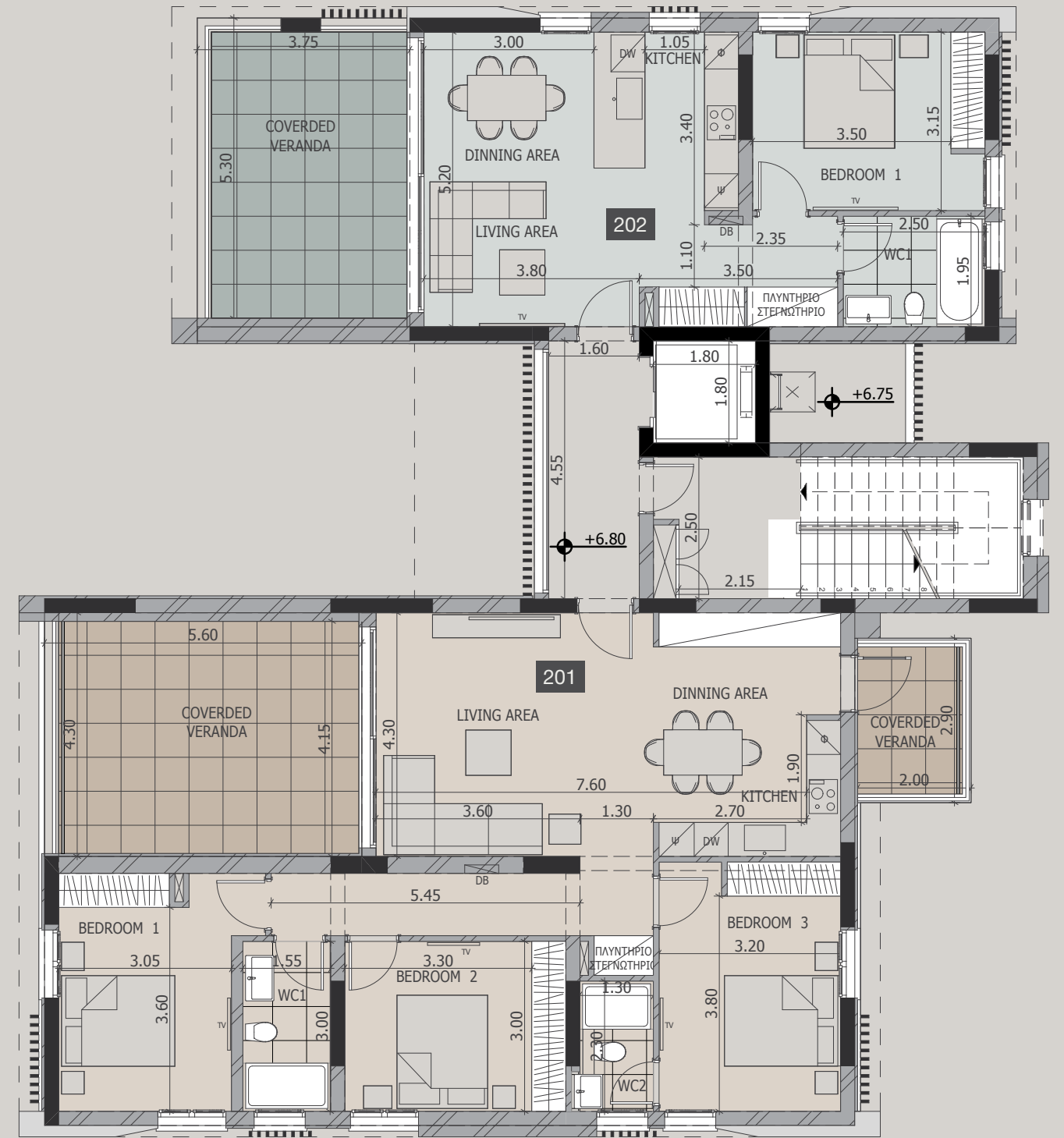
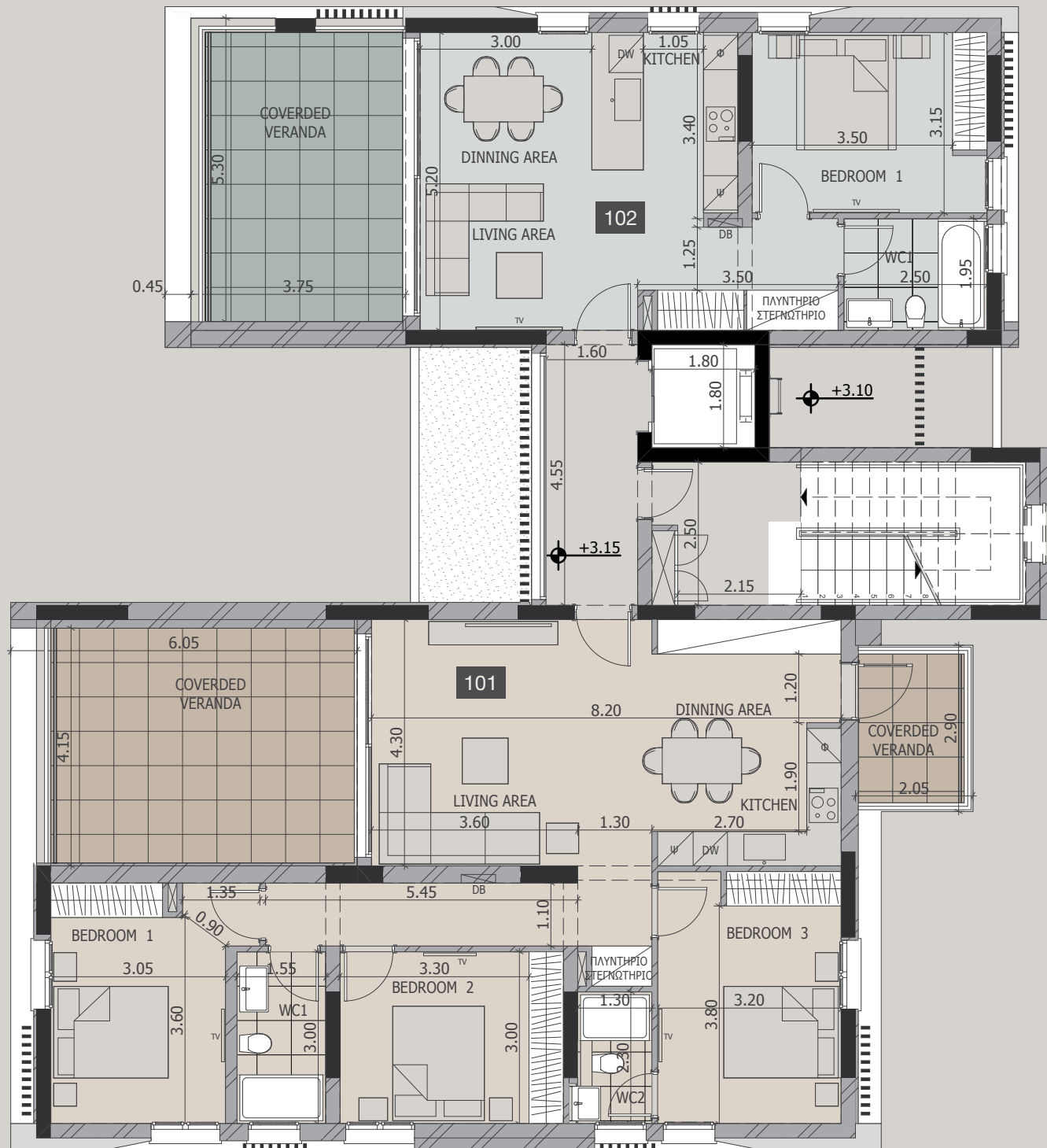
BLOCK B

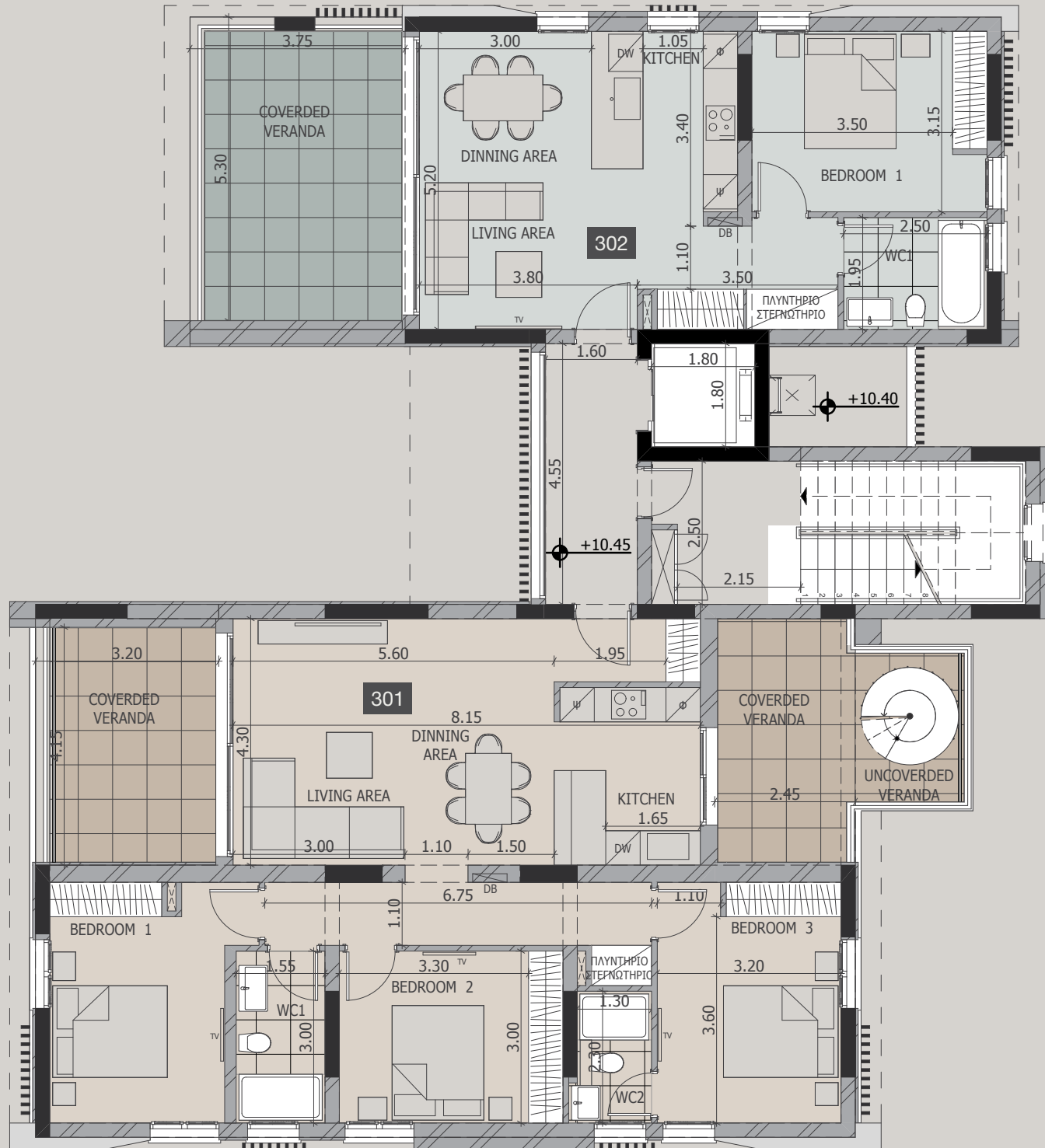
BLOCK A



*Floor plans show approximate measurements only. Exact layout and sizes may vary.

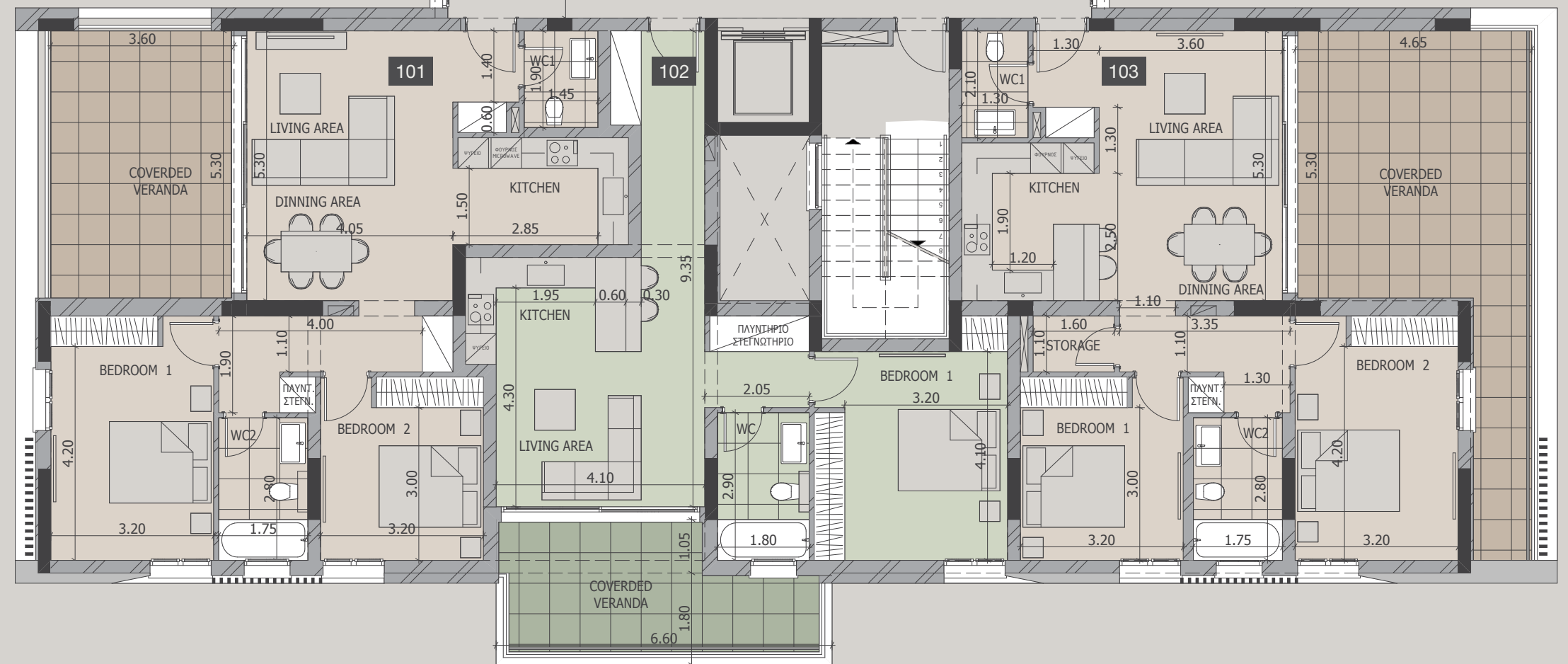
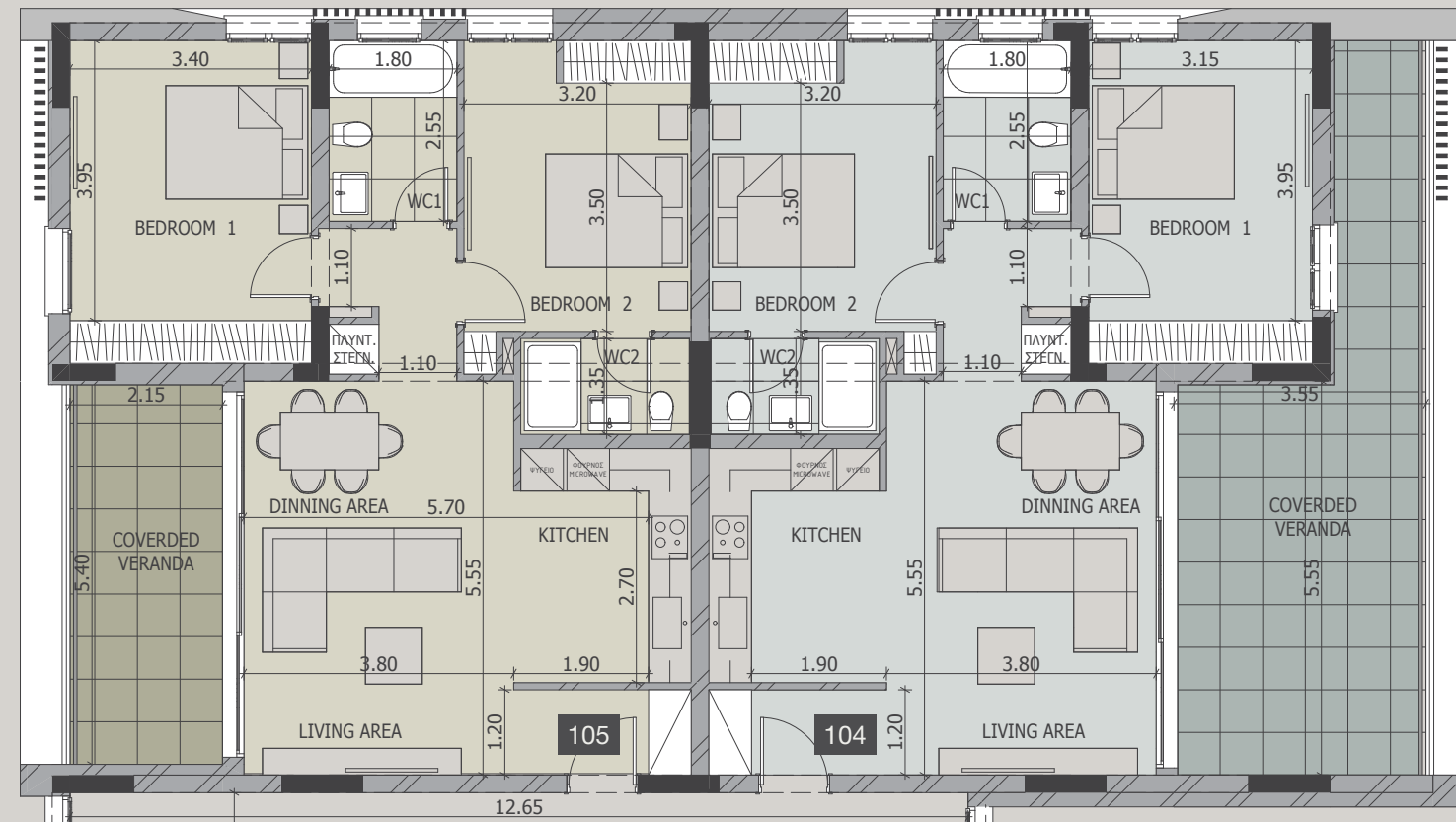






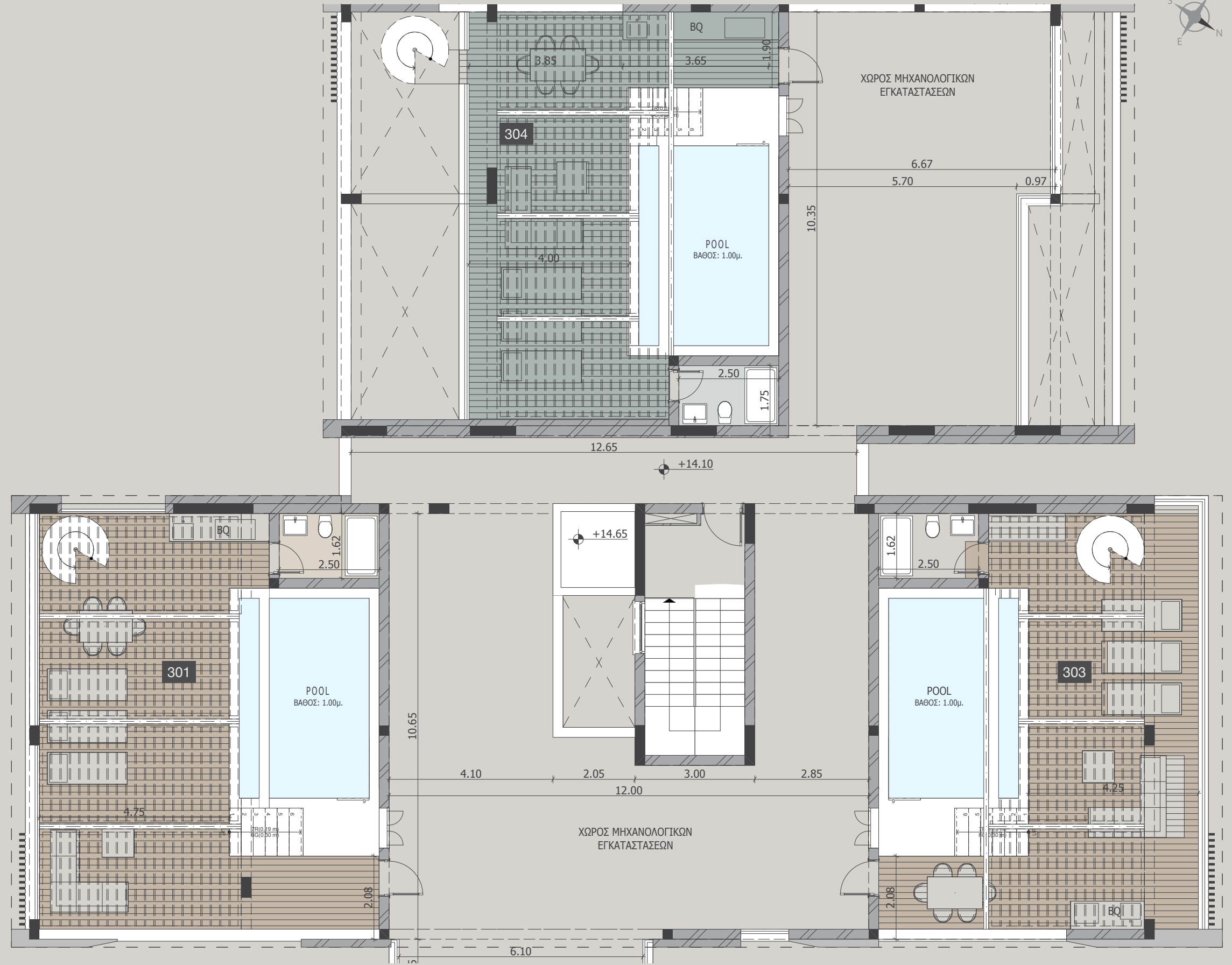


*Floor plans show approximate measurements only. Exact layout and sizes may vary.











*Floor plans show approximate measurements only. Exact layout and sizes may vary.





*Floor plans show approximate measurements only. Exact layout and sizes may vary.







SIGNATURE FINISHES

ELEGANCE PACKAGE

EVERY PROPERTY IS DELIVERED WITH THE SIGNATURE TOP STANDARD FINISHES:

- | Fully completed finishings
- | Parquet floors in the living room, kitchen and bedrooms
- | Marble floor and walls in the toilets and bathrooms
- | High ceilings (3.15 m)
- | Security and fireproof entrance doors
- | Intercom system
- | Underfloor central heating
- | Central VRV conditioning
- | Highstandard sanitary ware from European brands
- | Thermal aluminum window frames with double glazing
- | High standard kitchen cabinets
- | High standard wardrobes from European brands
- | Soft closers in kitchen cabinets
- | Penthouses enjoy private roof terraces with pools

NOTE: movable furniture, home appliances & interior items are extras





SIGNATURE PENTHOUSES

WE HAVE REIMAGINED THE IDEA OF WHAT A PENTHOUSE SHOULD BE. THE SIGNATURE PENTHOUSES ARE FEATURED ALMOST IN ALL APARTMENT DEVELOPMENTS AND REPRESENT THE BEST CHOICE FOR A DEMANDING AND SOPHISTICATED CUSTOMER WHO EXPECTS THE BEST OF COMFORT, STYLE AND PRIVACY.

The signature penthouses enjoy:

- | Sizable roof space
- | Decking floors
- | Mosaic tiled swimming pool with jacuzzi
- | Barbecue

NOTE: movable furniture & interior items are extras

