

# EDEN ROC RESIDENCE BLOCK B



THE ART OF LIVING

# EDEN ROC RESIDENCE BLOCK B

WELCOME TO  
EDEN ROC —  
UTOPIAN STYLE  
SANCTUARY  
OF LUXURY LIVING

This luxury residential complex is located in the heart of Limassol, in a privileged and quite neighborhood in the tourist area, approximately half a kilometre from the seafront. The building reaches up to 4 stores in height and is beautifully set around a specially designed landscaped garden.



500 METERS  
FROM  
LIMASSOL'S  
GOLDEN  
SANDY  
BEACHES

The design is influenced by elements from both nature and a professional landscaper. Wide horizontal bands form continuous balustrades that wrap around the blocks at each level, emphasize the horizontal nature of the development. The residents will enjoy privacy and luxury of the gated compound with an outdoor pool, gym and covered parking.



# MAJOR BENEFITS

- | Landmark architecture from one of London's leading architects
- | 500 meters from Limassol's golden sandy beaches and city amenities only moments away
- | Internal infrastructure: outdoor pool, gym, sauna, covered parking and landscaped gardens
- | Penthouses with private pools

- | High ceilings (3.10 m)
- | Top standards of finish (parquet floors, high doors of 2.4 m, security entrance doors, thermal aluminum window frames, top standard in-built furniture, and sanitary ware)
- | Water underfloor heating and VRF air conditioning

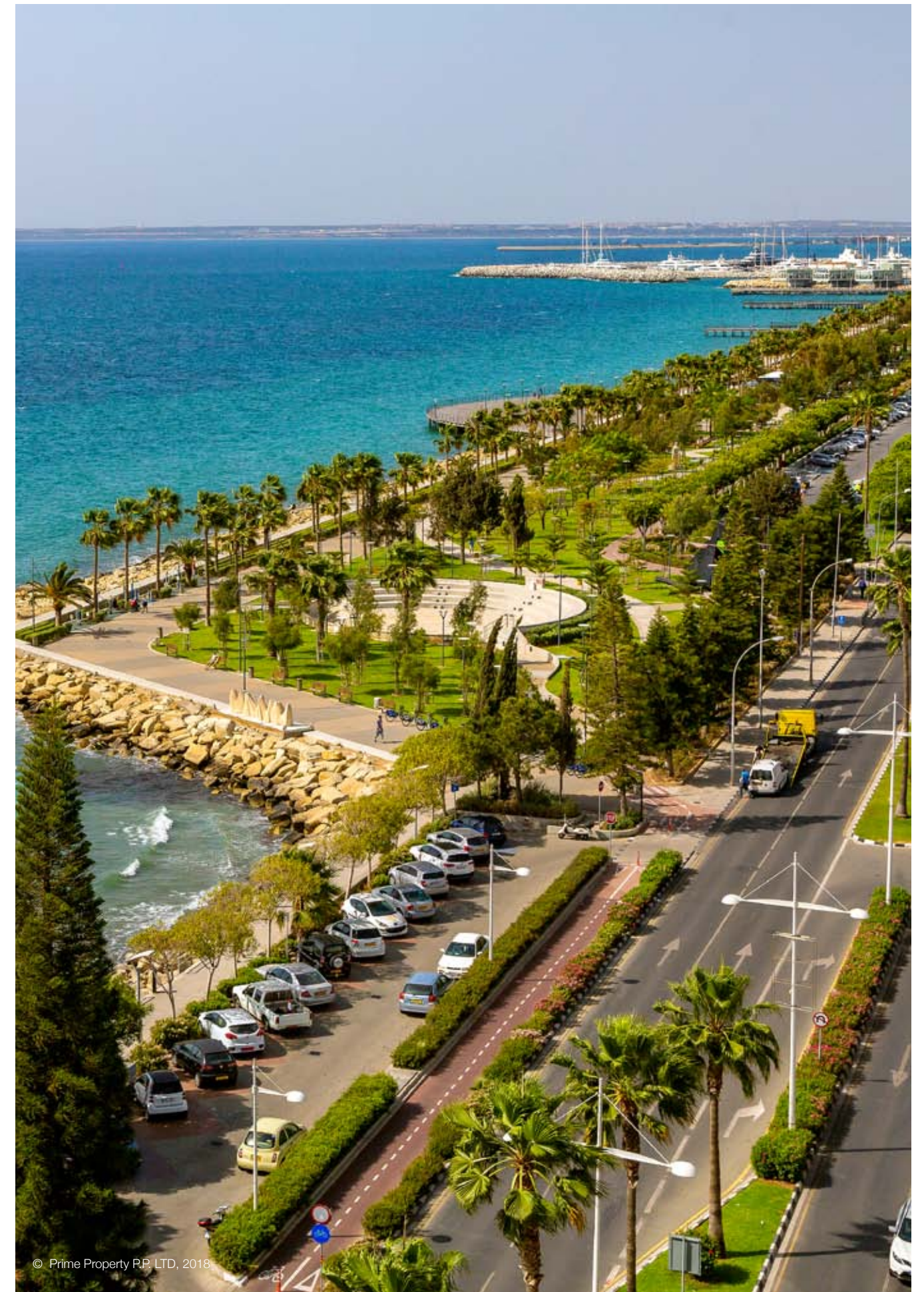


# INTRODUCTION

LIMASSOL —  
A HUB OF MODERN  
CREATIVITY  
AND ANCIENT  
HISTORY

Limassol is the second largest urban area in Cyprus, located on the southern coast, with an urban population of 160,000 — 176,700. Limassol was built between two ancient cities — Amathus and Kourion — and during Byzantine rule it was known as Neapolis (new town). Limassol's historical centre is located around its medieval Limassol Castle and the Old Port. Today the city spreads along the Mediterranean coast and has extended much farther than the castle and port, with its suburbs stretching along the coast to Amathus.

The history of Limassol is largely associated with the Third Crusade of Richard the Lionheart, who arrived in Limassol in 1191 on his way to the Holy Land. He arrested the renegade Byzantine Greek governor of Cyprus Limassol, Isaac Komnenos, taking over the entire island, and bringing the long Byzantine dominion of Cyprus to an end. Richard also celebrated his marriage with Berengaria who had received the crown as queen of England in Limassol. Richard destroyed Amathus and the inhabitants were transferred to Limassol.

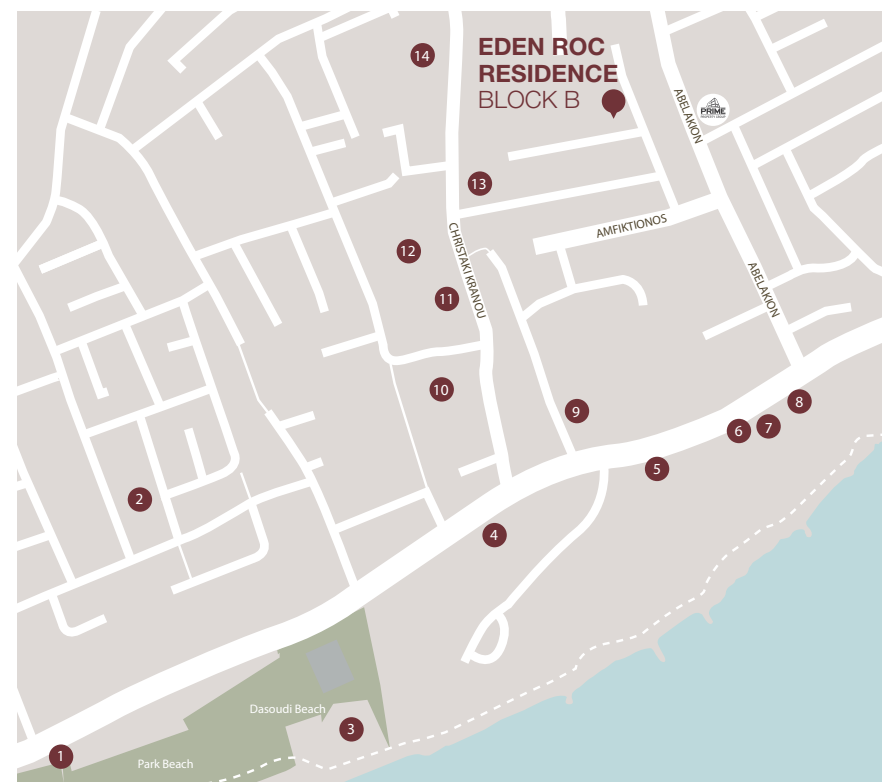


# LOCATION

THIS PROJECT IS CONVENIENTLY POSITIONED IN A CAREFULLY SELECTED QUIET AND SAFE NEIGHBOURHOOD IN ONE OF THE MOST PRESTIGIOUS TOURIST AREA OF LIMASSOL

This project is located in one of the best tourist districts, Potamos Germasogeia which is ideally situated in relation to all necessary infrastructures and golden sandy beaches. Limassol's foremost leading leisure activities and residency amenities such as groceries, banks, pharmacies and restaurants are within moments away.

Located in Germasogeia — the heart of the Limassol tourist area, Dasoudi Beach is the most popular coastal strip, which provides everything for the perfect day out. It has golden sands, clean and calm seawaters and Eucalyptus Park. All beaches are fully equipped with the necessary essential requirements and comforts to make your day out more enjoyable. From enticing water sports to pleasurable fun and games, Limassol is the place to be.



- 1 Pizza Hut
- 2 Swing Latina Dance & Fitness Studio
- 3 Limassol's Olympic Swimming Pool
- 4 Filippos Papadopoulos Pharmacy
- 5 The Garden
- 6 Starbucks
- 7 Ocean Basket
- 8 Costa Coffee
- 9 Plus Discount Market
- 10 Cyprus Post Office
- 11 Christina Metaxa Pharmacy
- 12 Sigma Bakery
- 13 Pet Shop
- 14 Slavyanka Russian supermarket



**SYMBOLS**

- Hotels
- Marina
- Highway
- Office of PPG

SPECTACULAR VIEWS  
OF THE SEA



500 METERS FROM LIMASSOL'S  
GOLDEN SANDY BEACHES







THE PROJECT IS LOCATED  
IN ONE OF THE MOST  
PRESTIGIOUS  
AREAS OF LIMASSOL







## INTERNAL INFRASTRUCTURE:

OUTDOOR POOL, GYM, SAUNA,  
COVERED PARKING AND LANDSCAPED  
GARDENS



# INTERIORS



Virtual tour of  
the showroom

LIVING ROOM



KITCHEN



**LUXURY FINISHES:** SEMI-SOLID PARQUET FLOORS, MARBLE FLOOR AND WALLS IN THE BATHROOMS, KITCHEN CABINETS FROM EUROPEAN BRANDS, THERMAL DOUBLE GLAZED WINDOWS, HIGH STANDARD SANITARY WARE, WATER UNDERFLOOR HEATING AND VRF AIR CONDITIONING

MASTER BEDROOM



# INTERIORS

## BEDROOM





BATHROOM

MARBLE FLOOR AND WALLS  
IN THE BATHROOMS





# CHOICE OF PROPERTIES

Property	Floor	Type	Bedrooms	Bathrooms	Private pool	Parking lot	Indoor area sq.m.	Covered veranda sq.m.	Sellable Auxiliary Floor Area sq.m.	Uncovered veranda sq.m.	Planter area sq.m.	Roof terrace sq.m.	Common area per unit, sq.m.	Total area sq.m.
	B	Parking												
	G	Parking												
<b>101</b>	<b>1st</b>	Apartment	3	3		1	120.59	42.13					31.33	<b>194.05</b>
<b>102</b>		Apartment	1	1		1	52.15	11.33					12.22	<b>75.70</b>
<b>103</b>		Apartment	1	1		1	51.54	5.34		2.15			10.95	<b>69.98</b>
<b>104</b>		Apartment	3	3		1	115.54	21.75					26.43	<b>163.72</b>
<b>105</b>		Apartment	1	1		1	54.26	18.49					14.01	<b>86.76</b>
<b>106</b>		Apartment	2	2		1	91.78	46.31					26.59	<b>164.68</b>
<b>107</b>		Apartment	2	2		1	84.52	16.62					19.47	<b>120.61</b>
<b>108</b>		Apartment	2	2		1	91.95	25.24					22.56	<b>139.75</b>
<b>109</b>		Apartment	2	2		1	77.66	13.27					17.51	<b>108.44</b>
<b>110</b>		Apartment	2	2		1	77.12	19.84					18.67	<b>115.63</b>
<b>111</b>		Apartment	2	2		1	94.88	29.03					23.86	<b>147.77</b>
<b>112</b>		Apartment	2	2		1	94.63	27.94					23.60	<b>146.17</b>
<b>201</b>	<b>2nd</b>	Apartment	3	3		1	120.60	43.21					31.54	<b>195.35</b>
<b>202</b>		Apartment	1	1		1	52.09	12.83					12.50	<b>77.42</b>
<b>203</b>		Apartment	1	1		1	51.53	6.75		2.15			11.22	<b>71.65</b>
<b>204</b>		Apartment	3	3		1	115.56	21.80					26.44	<b>163.80</b>
<b>205</b>		Apartment	1	1		1	54.26	18.44					14.00	<b>86.70</b>
<b>206</b>		Apartment	2	2		1	91.78	46.29					26.58	<b>164.65</b>
<b>207</b>		Apartment	2	2		1	85.10	16.59					19.58	<b>121.27</b>
<b>208</b>		Apartment	2	2		1	91.95	25.28					22.57	<b>139.80</b>
<b>209</b>		Apartment	2	2		1	77.66	15.20					17.88	<b>110.74</b>

Property	Floor	Type	Bedrooms	Bathrooms	Private pool	Parking lot	Indoor area sq.m.	Covered veranda sq.m.	Sellable Auxiliary Floor Area sq.m.	Uncovered veranda sq.m.	Planter area sq.m.	Roof terrace sq.m.	Common area per unit, sq.m.	Total area sq.m.
<b>210</b>		Apartment	2	2		1	77.12	20.16					18.73	<b>116.01</b>
<b>211</b>		Apartment	2	2		1	94.89	29.01					23.85	<b>147.75</b>
<b>212</b>		Apartment	2	2		1	94.63	29.39					23.88	<b>147.90</b>
<b>301</b>	<b>3rd</b>	Apartment	3	3		1	120.60	43.28					31.55	<b>195.43</b>
<b>302</b>		Apartment	1	1		1	52.15	14.64					12.86	<b>79.65</b>
<b>303</b>		Apartment	1	1		1	51.53	8.38			2.41		11.53	<b>73.85</b>
<b>304</b>		Apartment	3	3		1	115.66	21.64					26.43	<b>163.73</b>
<b>305</b>		Apartment	1	1		1	54.26	18.49					14.01	<b>86.76</b>
<b>306</b>		Apartment	2	2		1	92.02	46.11					26.59	<b>164.72</b>
<b>307</b>		Apartment	2	2		1	84.52	16.63					19.47	<b>120.62</b>
<b>308</b>		Apartment	2	2		1	91.95	25.26					22.57	<b>139.78</b>
<b>309</b>		Apartment	2	2		1	77.66	17.75					18.37	<b>113.78</b>
<b>310</b>		Apartment	2	2		1	77.12	19.82					18.66	<b>115.60</b>
<b>311</b>		Apartment	3	2		1	94.89	29.02					23.86	<b>147.77</b>
<b>312</b>		Apartment	2	2		1	94.63	29.40					23.88	<b>147.91</b>
<b>401</b>	<b>4th</b>	Penthouse	3	3	Yes	1	121.25	34.25	5th	46.10		107.45	38.81	<b>347.86</b>
<b>402</b>		Penthouse	3	3	Yes	1	121.13	23.00	5th	19.82		131.18	31.56	<b>326.69</b>
<b>403</b>		Penthouse	2	3	Yes	1	128.95	14.72	5th	52.82		65.00	37.83	<b>299.32</b>
<b>404</b>		Penthouse	3	3	Yes	1	145.90	31.30	5th	60.45	2.00	79.50	45.75	<b>364.90</b>
<b>405</b>		Penthouse	2	3	Yes	1	128.20	50.45	5th	52.67		107.17	44.53	<b>383.02</b>
<b>406</b>		Penthouse	3	2	Yes	1	130.55	24.50	5th	11.60		128.10	32.08	<b>326.83</b>
<b>407</b>		Penthouse	3	3	Yes	1	135.80	17.43	5th	53.00	1.89	92.35	39.70	<b>340.17</b>
<b>408</b>		Penthouse	3	3	Yes	1	125.44	50.90	5th	17.70	83.04	153.10	37.36	<b>467.54</b>

NOTE: the areas stated above may slightly differ upon issuance of relevant authority permits

# EDEN ROC PLOT B

TYPE 1



# EDEN ROC PLOT B

TYPE 2



## 1 BEDROOM

### Apartments

102, 103, 202, 203,  
302, 303

### Indoor area

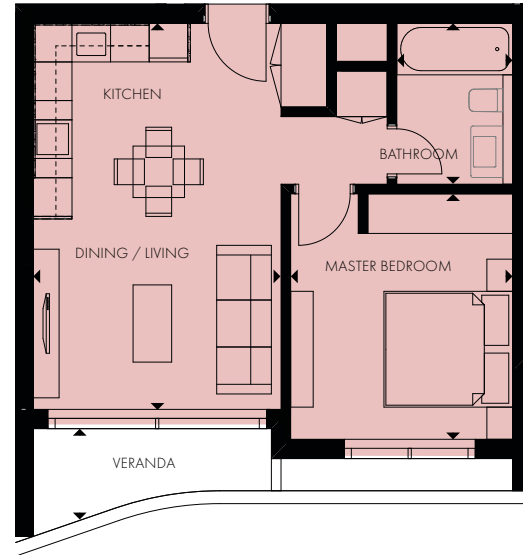
from 51.53 to 52.15 m<sup>2</sup>

### Covered Veranda

from 5.34 to 14.64 m<sup>2</sup>

### Total area

from 69.98 to 79.65 m<sup>2</sup>



## 1 BEDROOM

### Apartment

105

### Indoor area

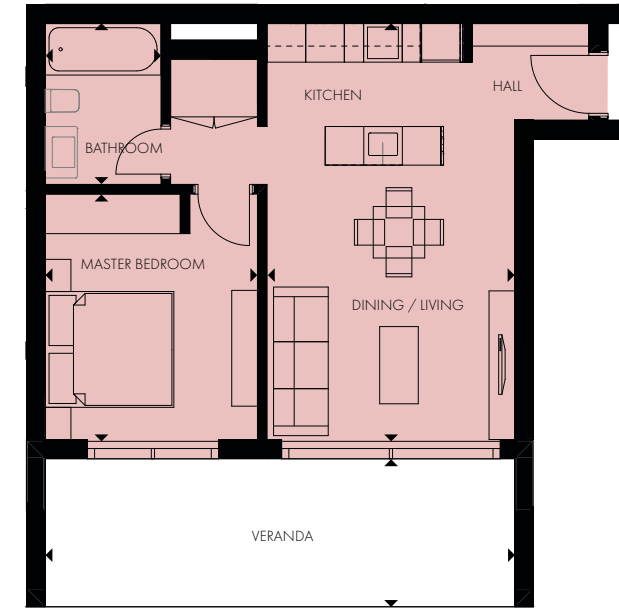
54.26 m<sup>2</sup>

### Covered Veranda

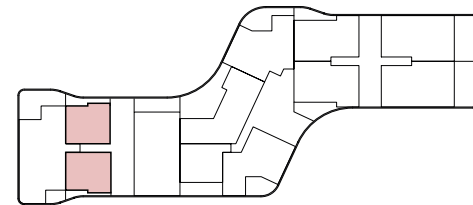
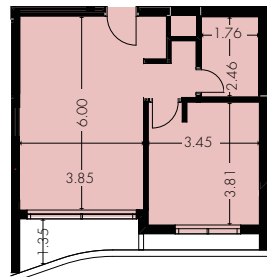
18.49 m<sup>2</sup>

### Total area

86.76 m<sup>2</sup>

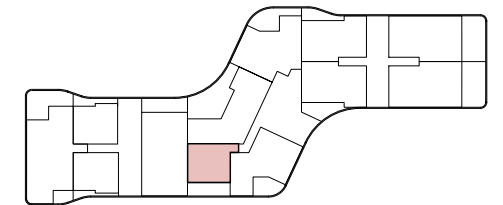
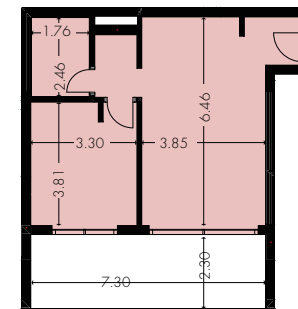


Floorplan location – level 01-03



Floor plans shown are for approximate measurements only.  
Exact layout and sizes may vary.  
All measurements may vary within a tolerance of 5%.

Floorplan location – level 01



Floor plans shown are for approximate measurements only.  
Exact layout and sizes may vary.  
All measurements may vary within a tolerance of 5%.

# EDEN ROC PLOT B

TYPE 2



# EDEN ROC PLOT B

TYPE 3



## 1 BEDROOM

**Apartments**  
205, 305

**Indoor area**  
54.26 m<sup>2</sup>

**Covered Veranda**  
from 18.44 to 18.49 m<sup>2</sup>

**Total area**  
86.76 m<sup>2</sup>



## 2 BEDROOMS

**Apartment**  
106

**Indoor area**  
91.78 m<sup>2</sup>

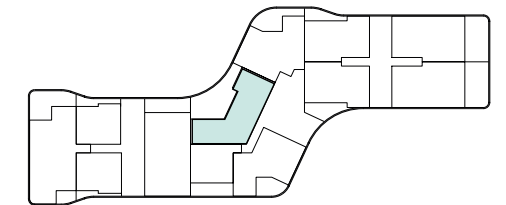
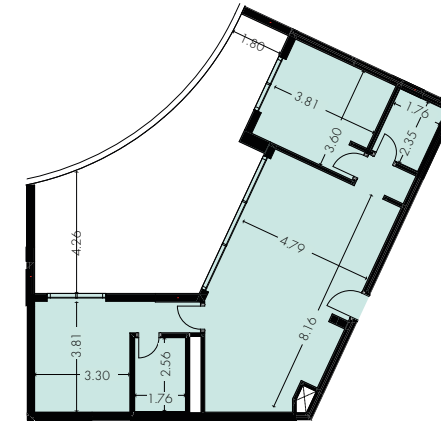
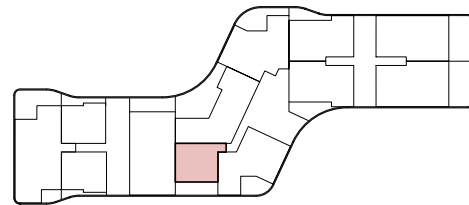
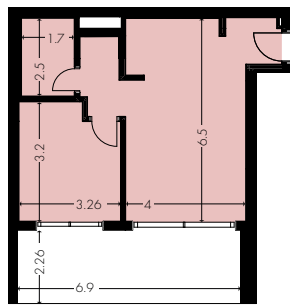
**Covered Veranda**  
46.31 m<sup>2</sup>

**Total area**  
164.68 m<sup>2</sup>



Floorplan location – level 02-03

Floorplan location – level 01



Floor plans shown are for approximate measurements only.  
Exact layout and sizes may vary.  
All measurements may vary within a tolerance of 5%.

Floor plans shown are for approximate measurements only.  
Exact layout and sizes may vary.  
All measurements may vary within a tolerance of 5%.

# EDEN ROC PLOT B

TYPE 3

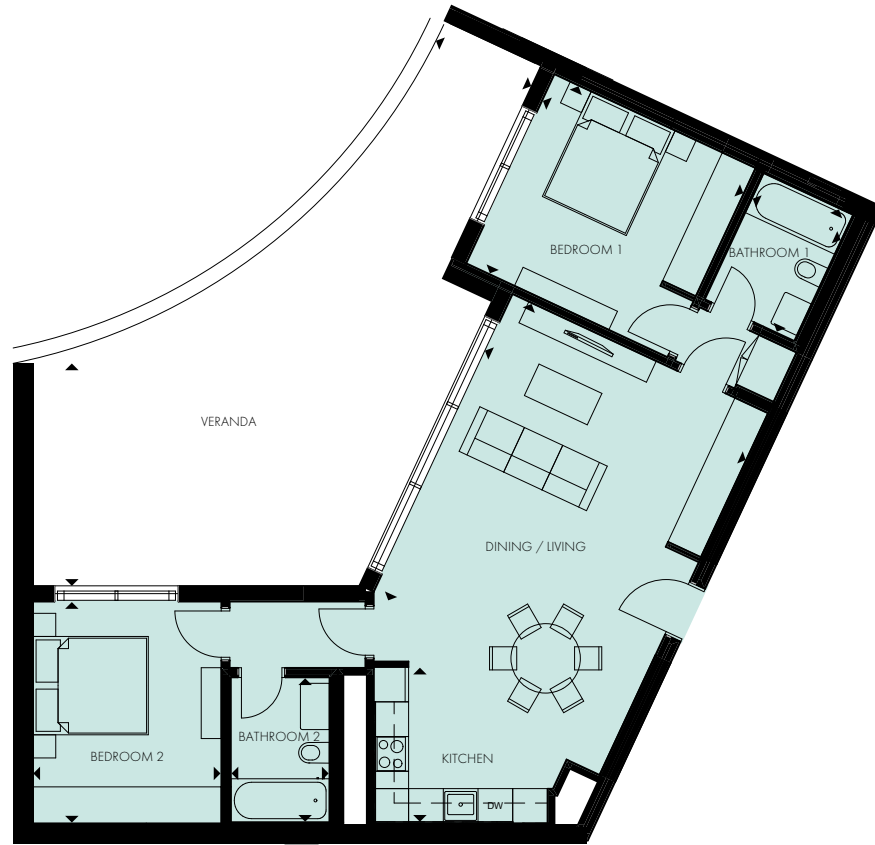
## 2 BEDROOMS

**Apartments**  
206, 306

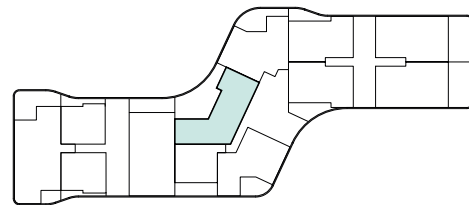
**Indoor area**  
from 91.78 to 92.02 m<sup>2</sup>

**Covered Veranda**  
46.29 m<sup>2</sup>

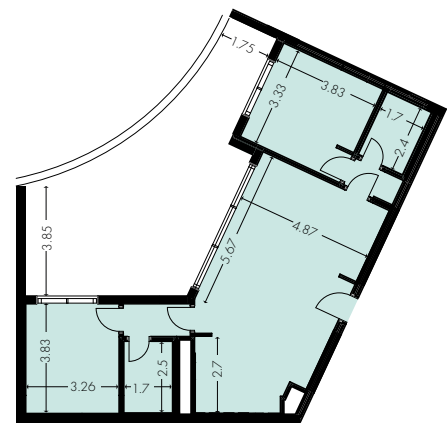
**Total area**  
164.72 m<sup>2</sup>



Floorplan location – level 02-03



Floor plans shown are for approximate measurements only.  
Exact layout and sizes may vary.  
All measurements may vary within a tolerance of 5%.



# EDEN ROC PLOT B

TYPE 4

## 2 BEDROOMS

**Apartments**  
107, 207, 307

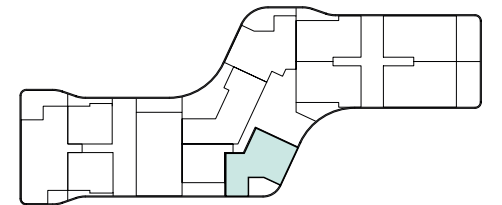
**Indoor area**  
from 84.52 to 85.10 m<sup>2</sup>

**Covered Veranda**  
16.62 m<sup>2</sup>

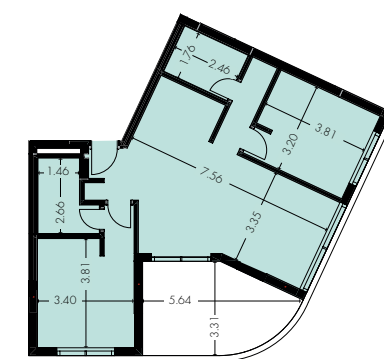
**Total area**  
from 120.61 to 121.27 m<sup>2</sup>



Floorplan location – level 01-03



Floor plans shown are for approximate measurements only.  
Exact layout and sizes may vary.  
All measurements may vary within a tolerance of 5%.



# EDEN ROC PLOT B

TYPE 5



## 2 BEDROOMS

**Apartments**  
108, 208, 308

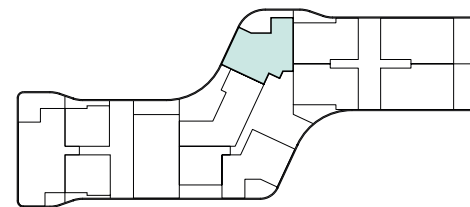
**Indoor area**  
91.95 m<sup>2</sup>

**Covered Veranda**  
25.28 m<sup>2</sup>

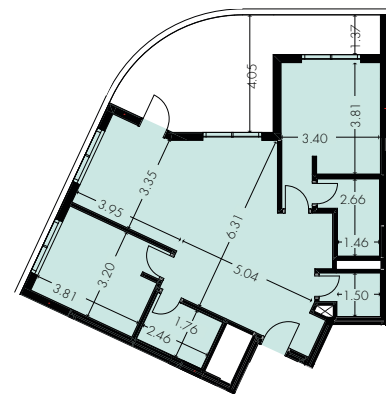
**Total area**  
139.78 m<sup>2</sup>



Floorplan location – level 01-03



Floor plans shown are for approximate measurements only.  
Exact layout and sizes may vary.  
All measurements may vary within a tolerance of 5%.



# EDEN ROC PLOT B

TYPE 6



## 2 BEDROOMS

**Apartments**  
109, 110, 209, 210,  
309, 310

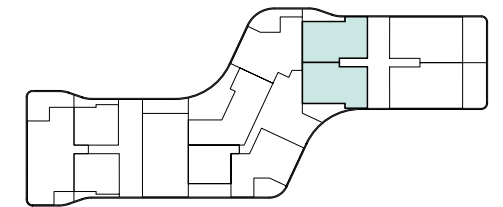
**Indoor area**  
from 77.12 to 77.66 m<sup>2</sup>

**Covered Veranda**  
from 13.27 to 20.16 m<sup>2</sup>

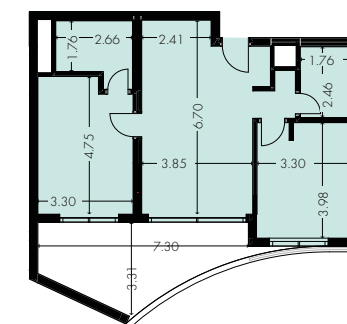
**Total area**  
from 108.44 to 116.01 m<sup>2</sup>



Floorplan location – level 01-03



Floor plans shown are for approximate measurements only.  
Exact layout and sizes may vary.  
All measurements may vary within a tolerance of 5%.



# EDEN ROC PLOT B

TYPE 7



## 2 BEDROOMS

### Apartments

111, 112, 211, 212, 312

### Indoor area

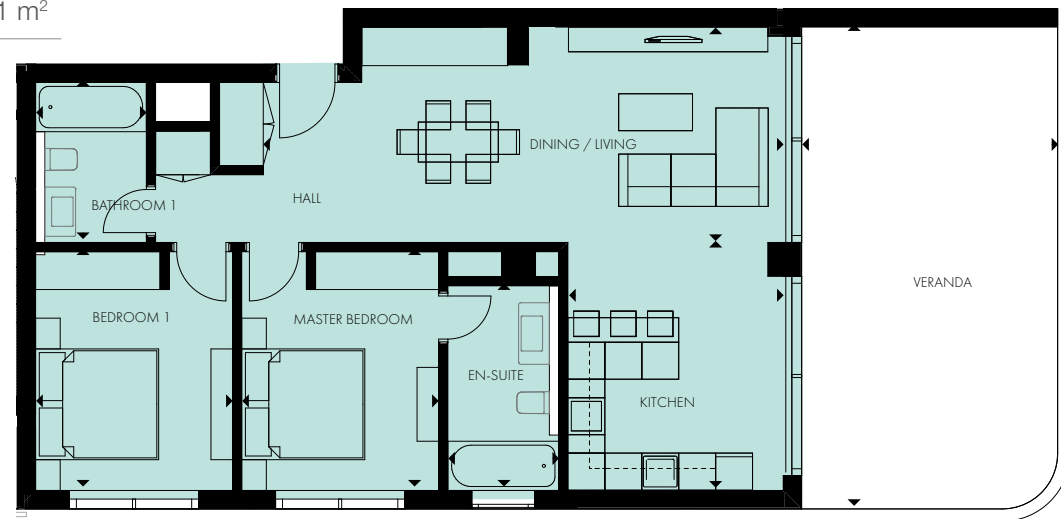
from 94.63 to 94.89 m<sup>2</sup>

### Covered Veranda

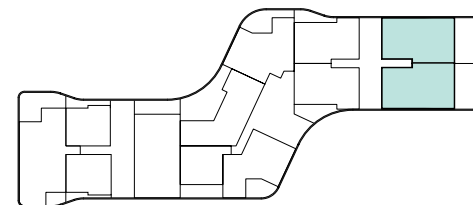
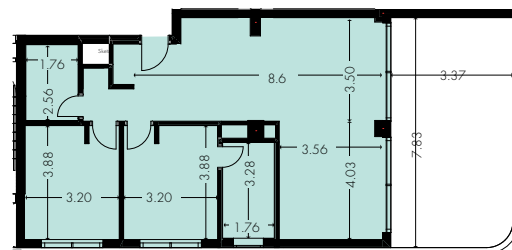
from 27.94 to 29.40 m<sup>2</sup>

### Total area

from 146.17 to 147.91 m<sup>2</sup>



Floorplan location – level 01-03



Floor plans shown are for approximate measurements only.  
Exact layout and sizes may vary.  
All measurements may vary within a tolerance of 5%.

# EDEN ROC PLOT B

TYPE 7



## 3 BEDROOMS

### Apartment

311

### Indoor area

94.89 m<sup>2</sup>

### Covered Veranda

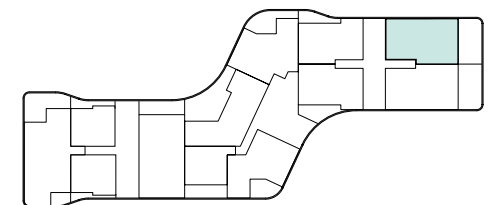
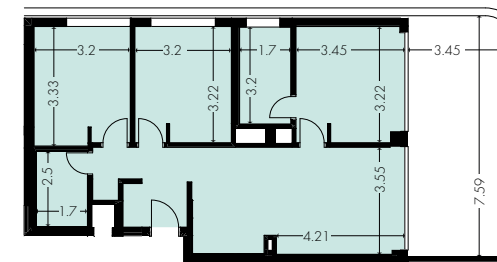
29.02 m<sup>2</sup>

### Total area

147.77 m<sup>2</sup>



Floorplan location – level 03



Floor plans shown are for approximate measurements only.  
Exact layout and sizes may vary.  
All measurements may vary within a tolerance of 5%.

# EDEN ROC PLOT B

TYPE 8

**3 BEDROOMS**

**Apartments**  
101, 201, 301

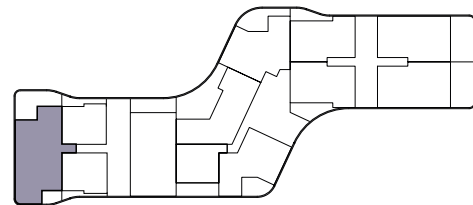
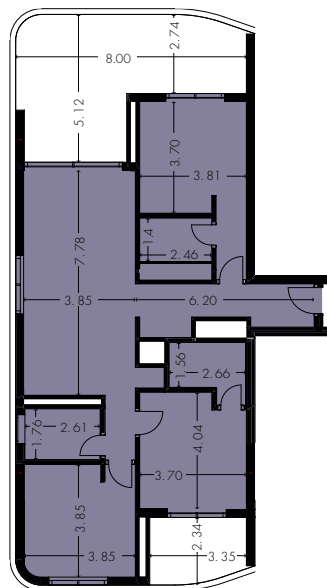
**Indoor area**  
from 120.59 to 120.60 m<sup>2</sup>

**Covered Veranda**  
from 42.13 to 43.28 m<sup>2</sup>

**Total area**  
from 194.05 to 195.43 m<sup>2</sup>



Floorplan location – level 01-03



Floor plans shown are for approximate measurements only.  
Exact layout and sizes may vary.  
All measurements may vary within a tolerance of 5%.

# EDEN ROC PLOT B

TYPE 9

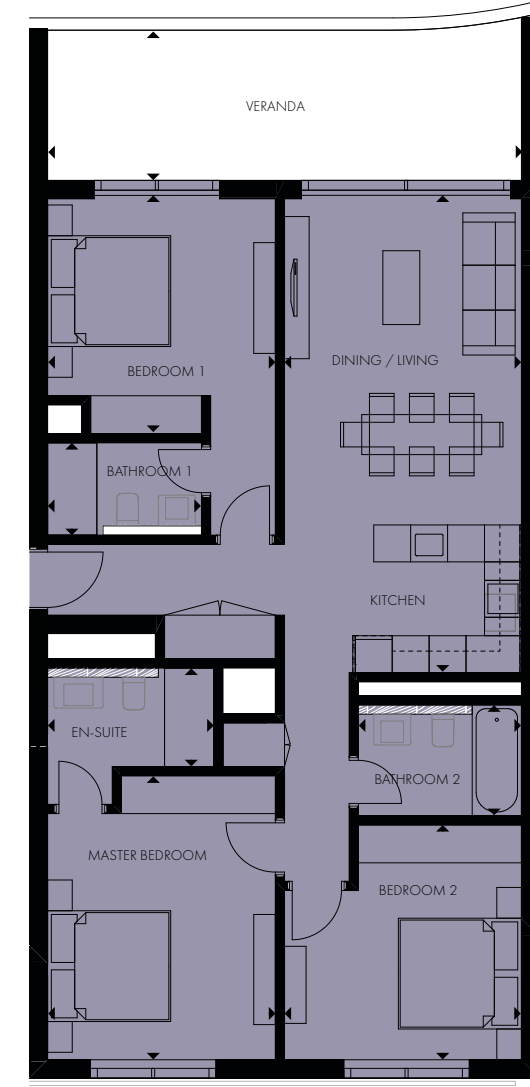
**3 BEDROOMS**

**Apartments**  
104, 204

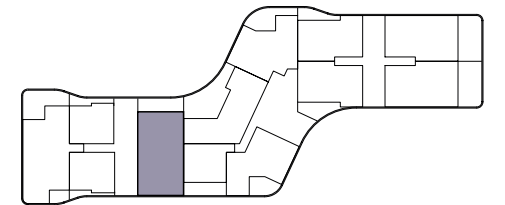
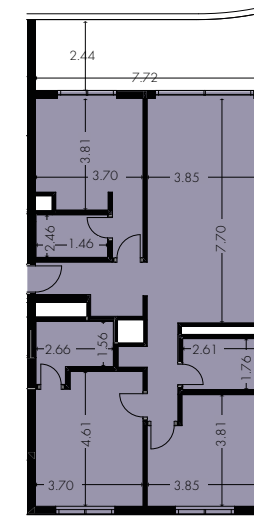
**Indoor area**  
from 115.54 to 115.56 m<sup>2</sup>

**Covered Veranda**  
21.80 m<sup>2</sup>

**Total area**  
163.80 m<sup>2</sup>



Floorplan location – level 01-02

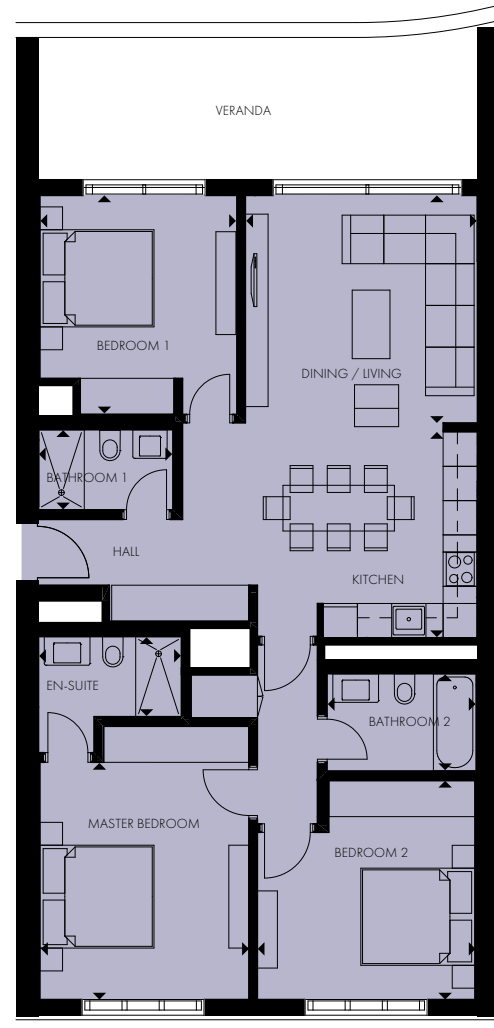


Floor plans shown are for approximate measurements only.  
Exact layout and sizes may vary.  
All measurements may vary within a tolerance of 5%.

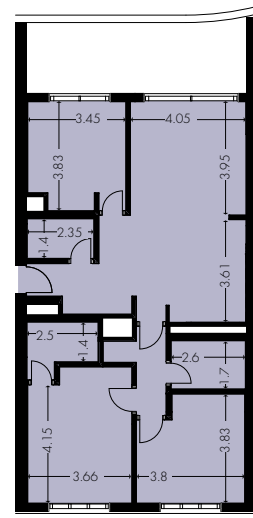
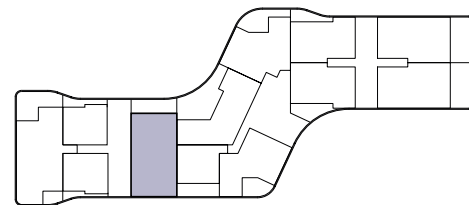
# EDEN ROC PLOT B

TYPE 9

<b>3 BEDROOMS</b>
<b>Apartment</b> 304
<b>Indoor area</b> 115.66 m <sup>2</sup>
<b>Covered Veranda</b> 21.64 m <sup>2</sup>
<b>Total area</b> 163.73 m <sup>2</sup>



Floorplan location – level 03



Floor plans shown are for approximate measurements only.  
Exact layout and sizes may vary.  
All measurements may vary within a tolerance of 5%.





# EDEN ROC PLOT B

TYPE 10 – LOWER LEVEL

## PENTHOUSE

**Penthouse**  
401

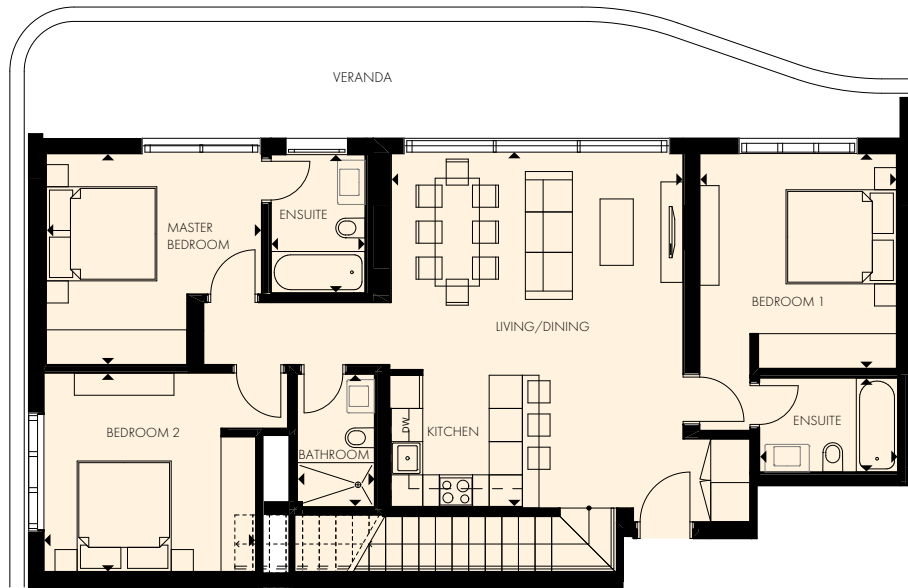
**Indoor area**  
121.25 m<sup>2</sup>

**Covered veranda**  
34.25 m<sup>2</sup>

**Auxiliary area**  
46.10 m<sup>2</sup>

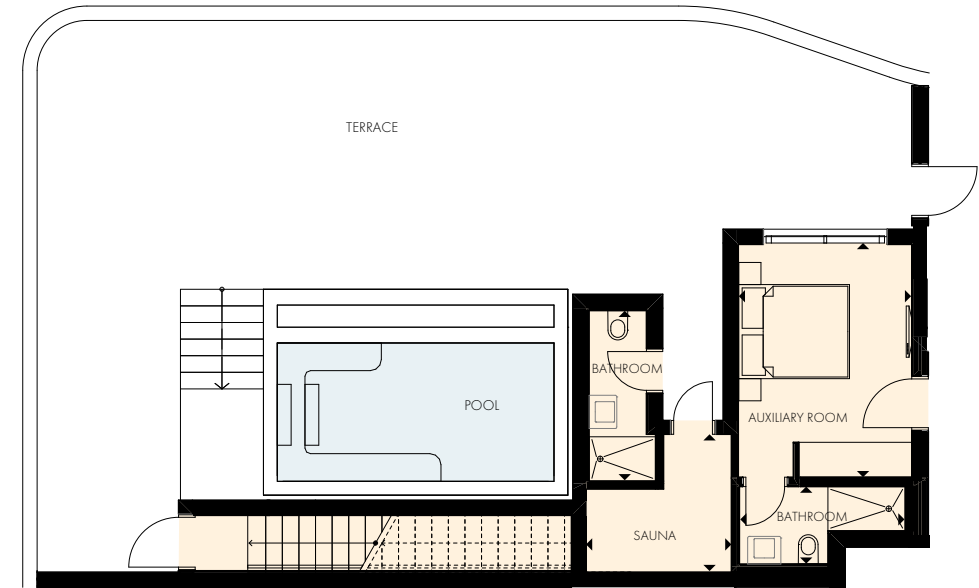
**Roof terrace**  
107.45 m<sup>2</sup>

**Total area**  
347.86 m<sup>2</sup>

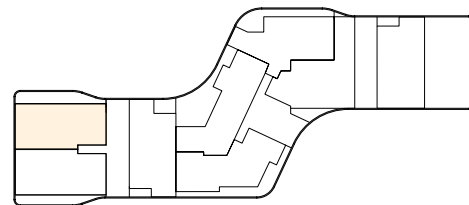
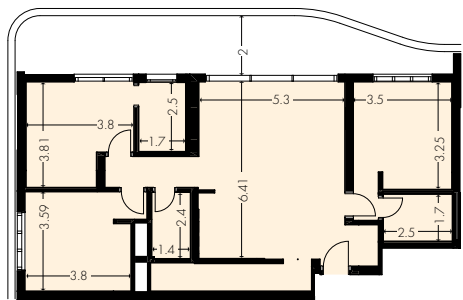


# EDEN ROC PLOT B

TYPE 10 – UPPER LEVEL

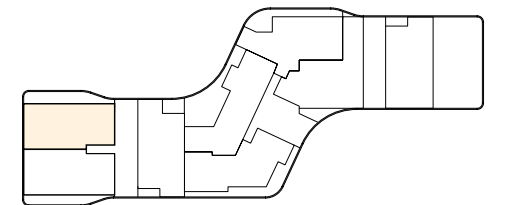
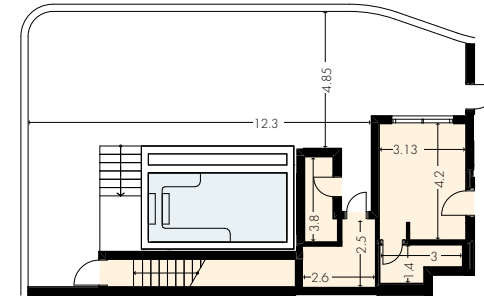


Floorplan location – level 04



Floor plans shown are for approximate measurements only.  
Exact layout and sizes may vary.  
All measurements may vary within a tolerance of 5%.

Floorplan location – level 05



Floor plans shown are for approximate measurements only.  
Exact layout and sizes may vary.  
All measurements may vary within a tolerance of 5%.

# EDEN ROC PLOT B

TYPE 10 – LOWER LEVEL

## PENTHOUSE

**Penthouse**  
402

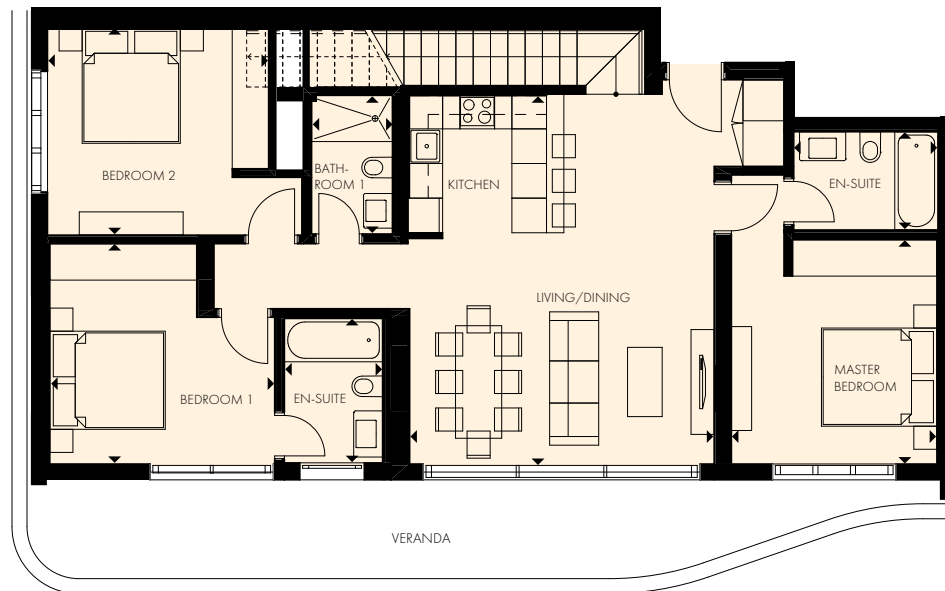
**Indoor area**  
121.13 m<sup>2</sup>

**Covered veranda**  
23.00 m<sup>2</sup>

**Auxiliary area**  
19.82 m<sup>2</sup>

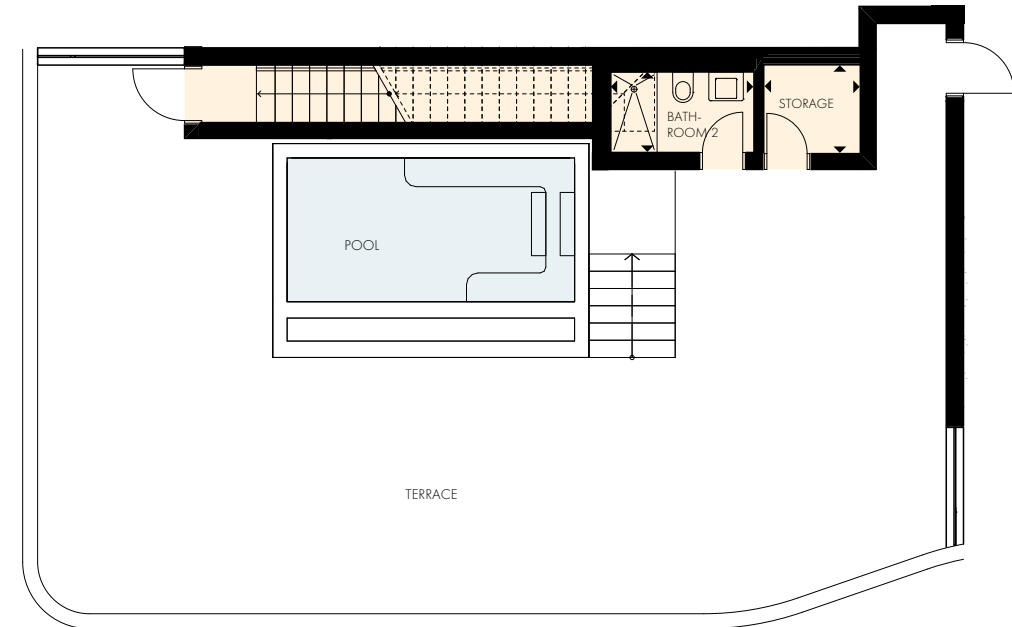
**Roof terrace**  
131.18 m<sup>2</sup>

**Total area**  
326.69 m<sup>2</sup>

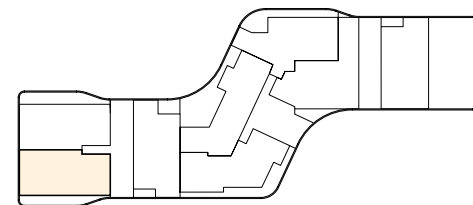
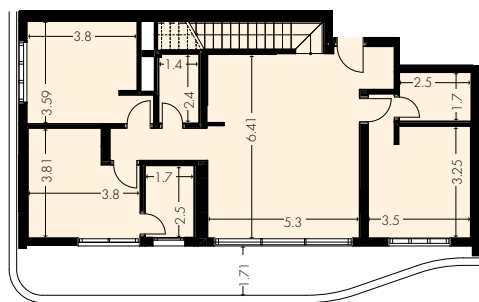


# EDEN ROC PLOT B

TYPE 10 – UPPER LEVEL

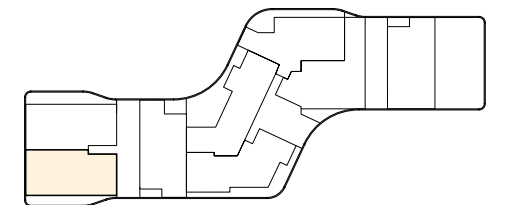
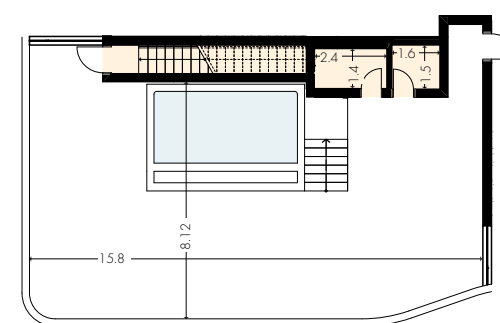


Floorplan location – level 04



Floor plans shown are for approximate measurements only.  
Exact layout and sizes may vary.  
All measurements may vary within a tolerance of 5%.

Floorplan location – level 05



Floor plans shown are for approximate measurements only.  
Exact layout and sizes may vary.  
All measurements may vary within a tolerance of 5%.

# EDEN ROC PLOT B

TYPE 11 – LOWER LEVEL

## PENTHOUSE

**Penthouse**  
403

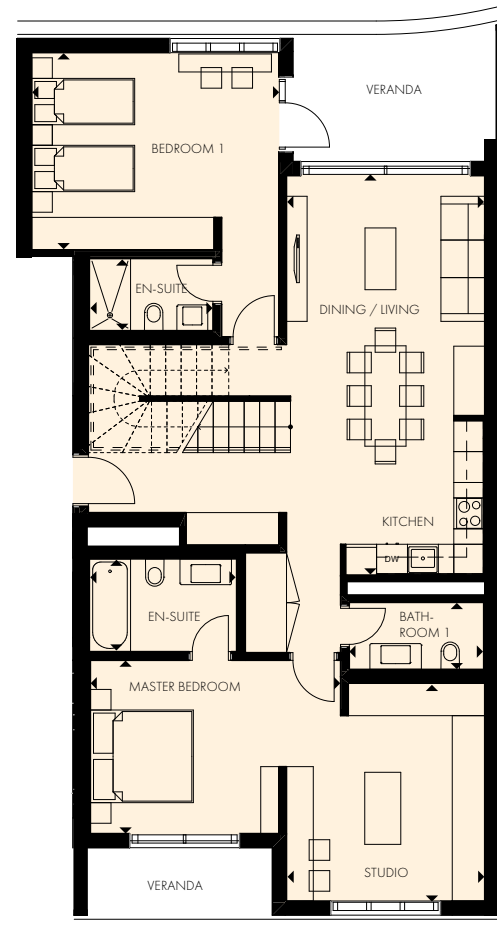
**Indoor area**  
128.95 m<sup>2</sup>

**Covered veranda**  
14.72 m<sup>2</sup>

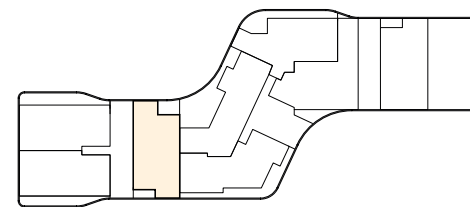
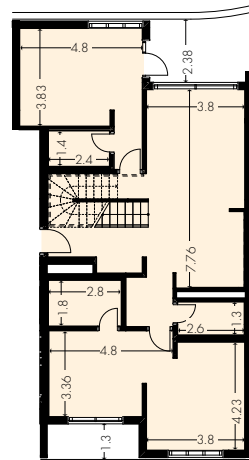
**Auxiliary area**  
52.82 m<sup>2</sup>

**Roof terrace**  
65.00 m<sup>2</sup>

**Total area**  
299.32 m<sup>2</sup>



Floorplan location – level 04

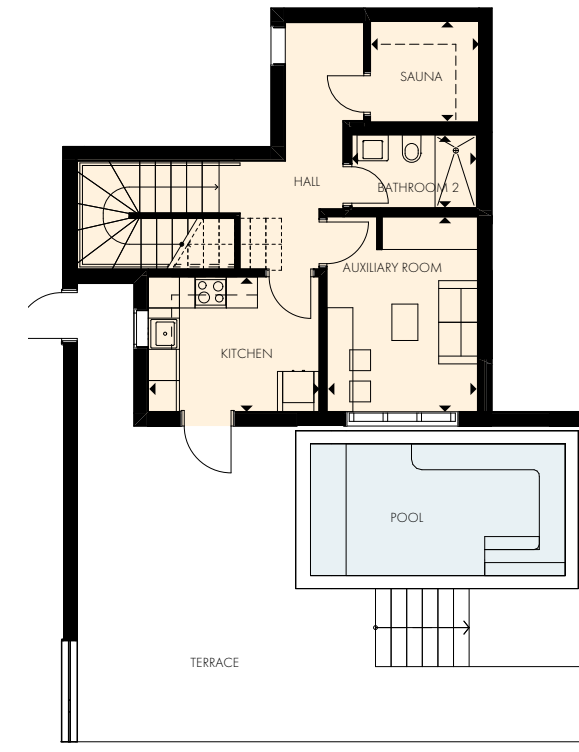


Floor plans shown are for approximate measurements only.  
Exact layout and sizes may vary.  
All measurements may vary within a tolerance of 5%.

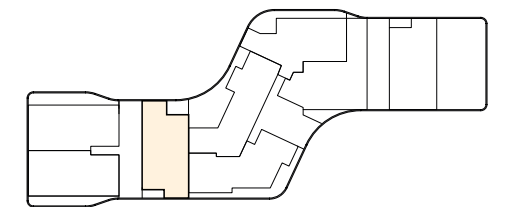
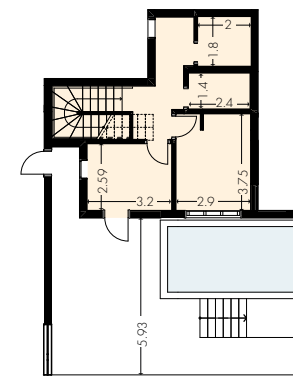


# EDEN ROC PLOT B

TYPE 11 – UPPER LEVEL



Floorplan location – level 05



Floor plans shown are for approximate measurements only.  
Exact layout and sizes may vary.  
All measurements may vary within a tolerance of 5%.

# EDEN ROC PLOT B

TYPE 12 – LOWER LEVEL

## PENTHOUSE

**Penthouse**  
404

**Indoor area**  
145.90 m<sup>2</sup>

**Covered veranda**  
31.30 m<sup>2</sup>

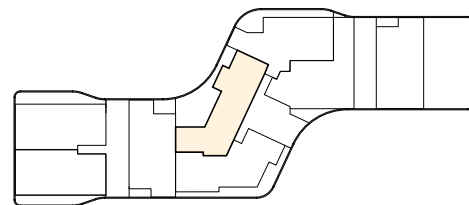
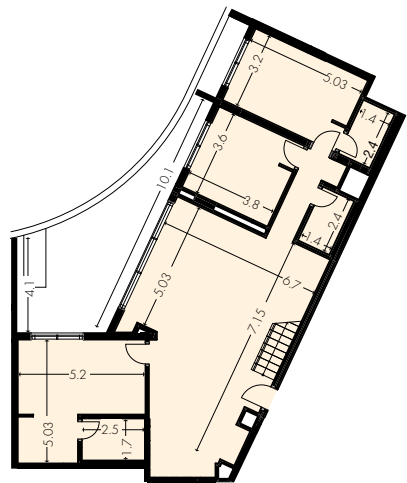
**Auxiliary area**  
60.45 m<sup>2</sup>

**Roof terrace**  
79.50 m<sup>2</sup>

**Total area**  
364.90 m<sup>2</sup>



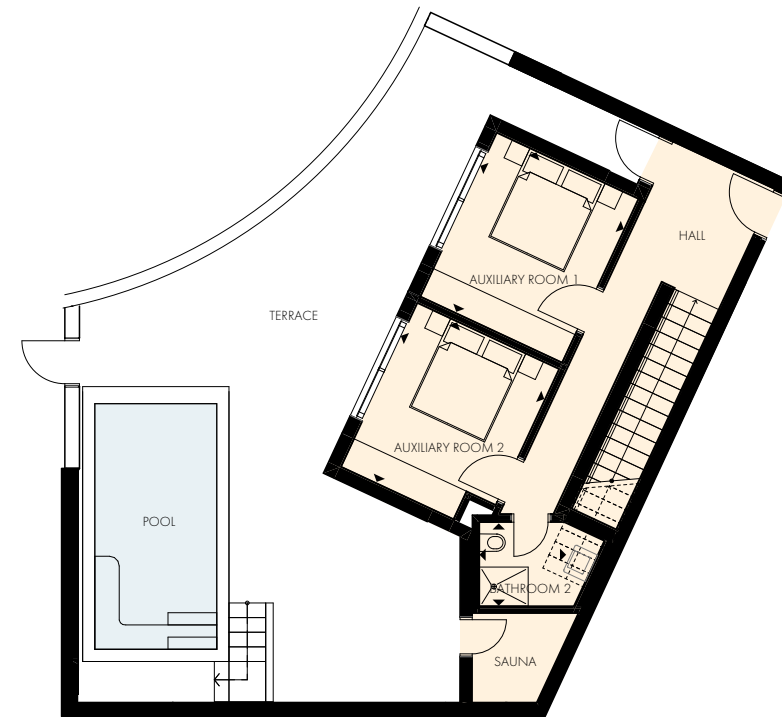
Floorplan location – level 04



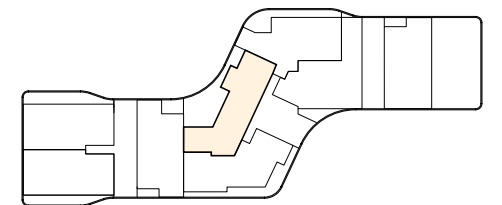
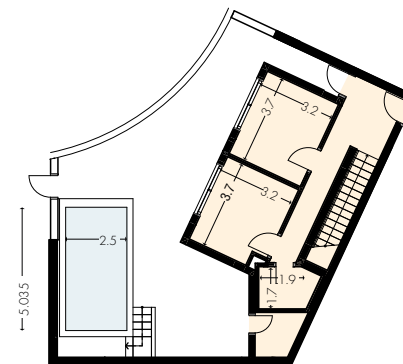
Floor plans shown are for approximate measurements only.  
Exact layout and sizes may vary.  
All measurements may vary within a tolerance of 5%.

# EDEN ROC PLOT B

TYPE 12 – UPPER LEVEL



Floorplan location – level 05



Floor plans shown are for approximate measurements only.  
Exact layout and sizes may vary.  
All measurements may vary within a tolerance of 5%.

# EDEN ROC PLOT B

TYPE 13 – LOWER LEVEL

# EDEN ROC PLOT B

TYPE 13 – UPPER LEVEL



## PENTHOUSE

**Penthouse**  
405

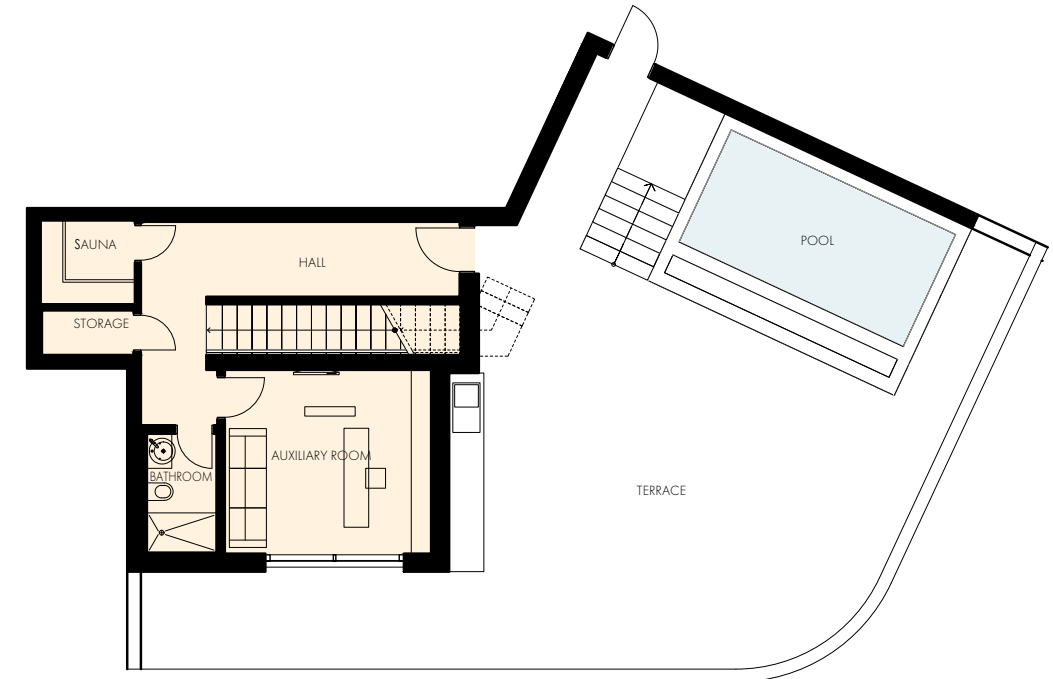
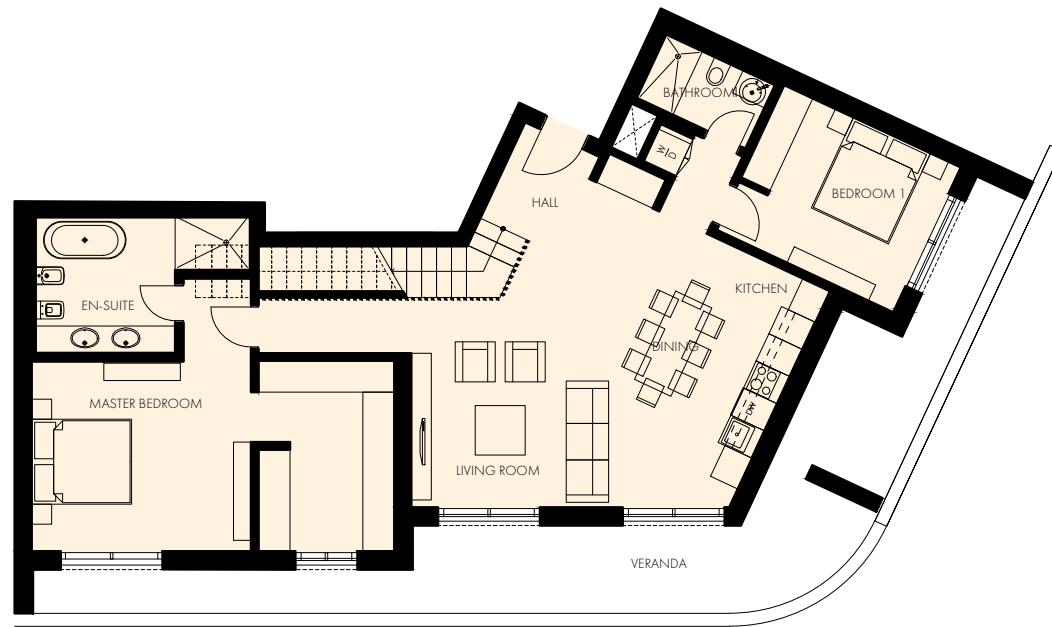
**Indoor area**  
128.20 m<sup>2</sup>

**Covered veranda**  
50.45 m<sup>2</sup>

**Auxiliary area**  
52.67 m<sup>2</sup>

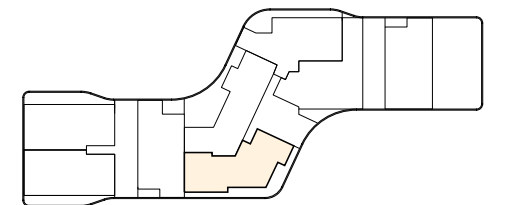
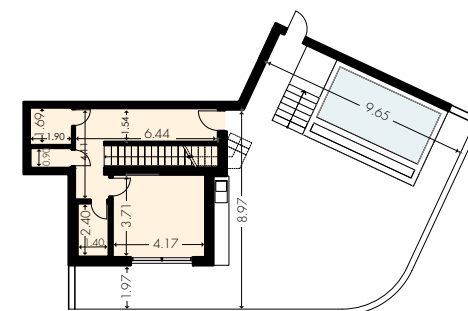
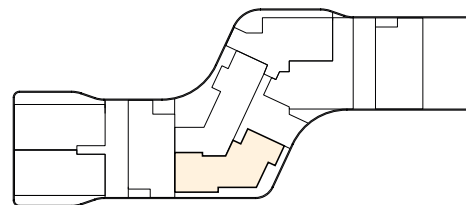
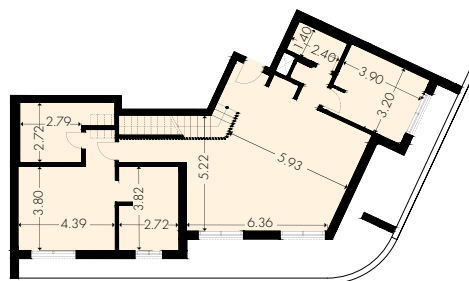
**Roof terrace**  
107.17 m<sup>2</sup>

**Total area**  
383.02 m<sup>2</sup>



Floorplan location – level 04

Floorplan location – level 05



Floor plans shown are for approximate measurements only.  
Exact layout and sizes may vary.  
All measurements may vary within a tolerance of 5%.

Floor plans shown are for approximate measurements only.  
Exact layout and sizes may vary.  
All measurements may vary within a tolerance of 5%.

# EDEN ROC PLOT B

TYPE 14 – LOWER LEVEL

## PENTHOUSE

**Penthouse**  
406

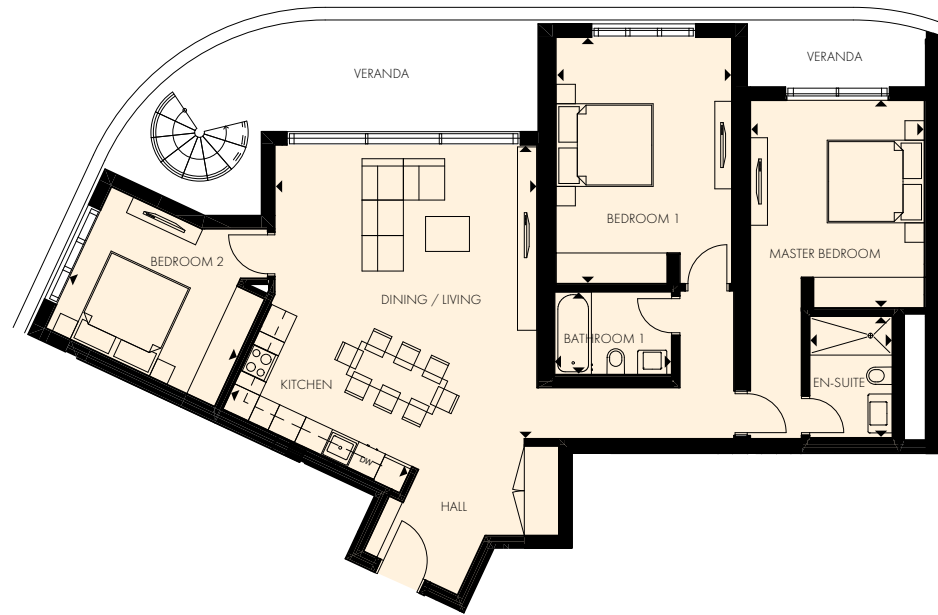
**Indoor area**  
130.55 m<sup>2</sup>

**Covered veranda**  
24.50 m<sup>2</sup>

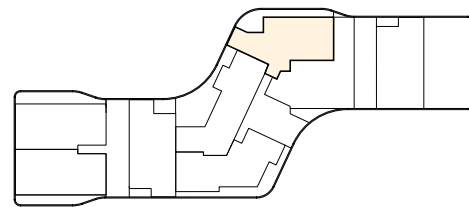
**Auxiliary area**  
11.60 m<sup>2</sup>

**Roof terrace**  
128.10 m<sup>2</sup>

**Total area**  
326.83 m<sup>2</sup>



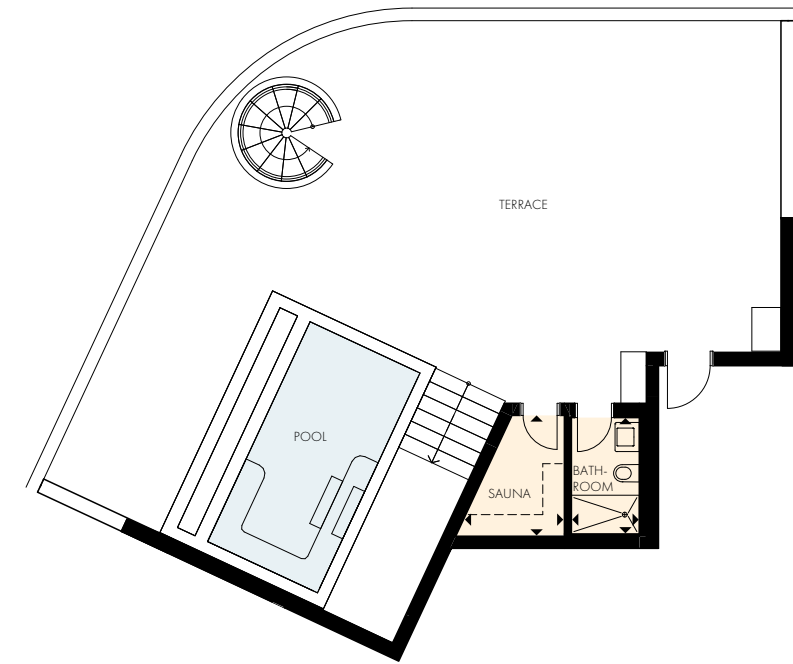
Floorplan location – level 04



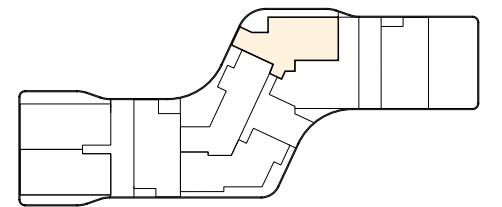
Floor plans shown are for approximate measurements only.  
Exact layout and sizes may vary.  
All measurements may vary within a tolerance of 5%.

# EDEN ROC PLOT B

TYPE 14 – UPPER LEVEL



Floorplan location – level 05



Floor plans shown are for approximate measurements only.  
Exact layout and sizes may vary.  
All measurements may vary within a tolerance of 5%.

# EDEN ROC PLOT B

TYPE 15 – LOWER LEVEL

## PENTHOUSE

**Penthouse**  
407

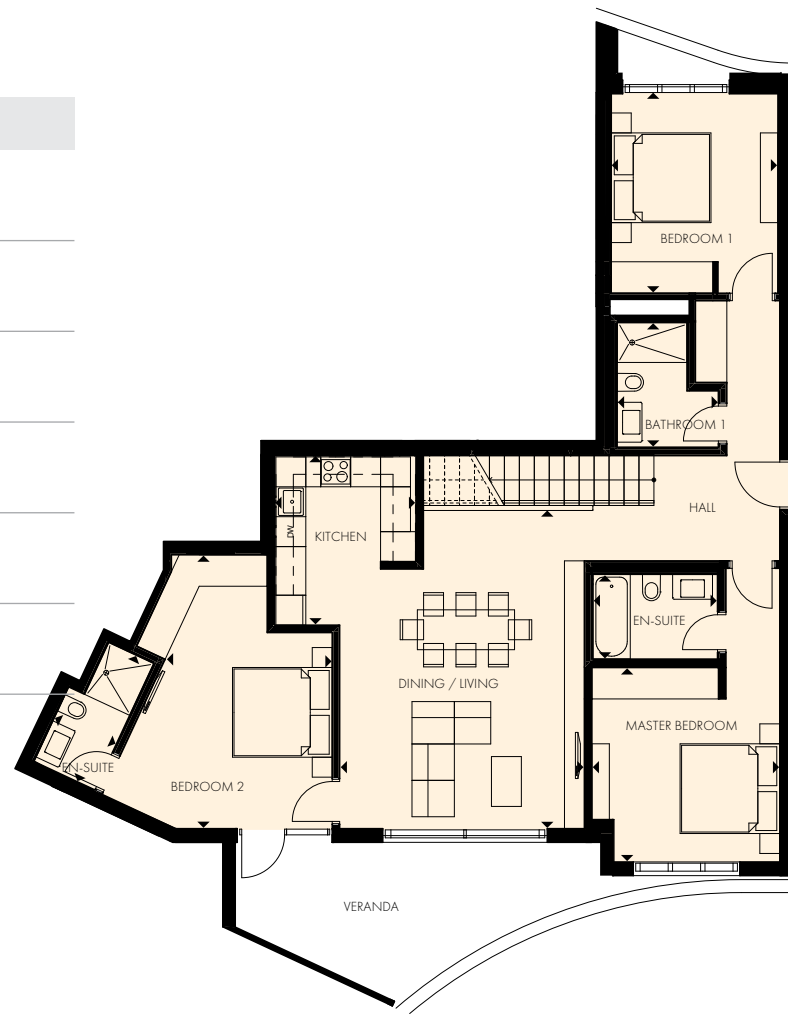
**Indoor area**  
135.80 m<sup>2</sup>

**Covered veranda**  
17.43 m<sup>2</sup>

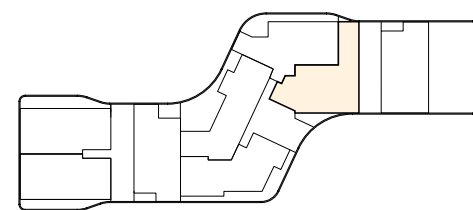
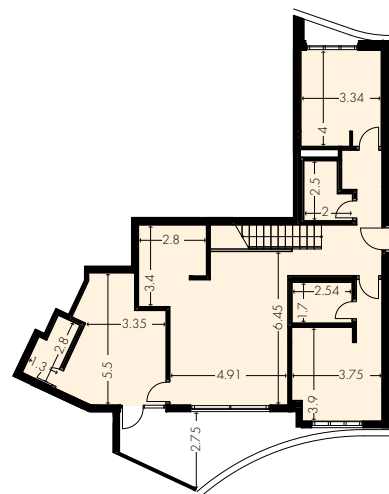
**Auxiliary area**  
53.00 m<sup>2</sup>

**Roof terrace**  
92.35 m<sup>2</sup>

**Total area**  
340.17 m<sup>2</sup>



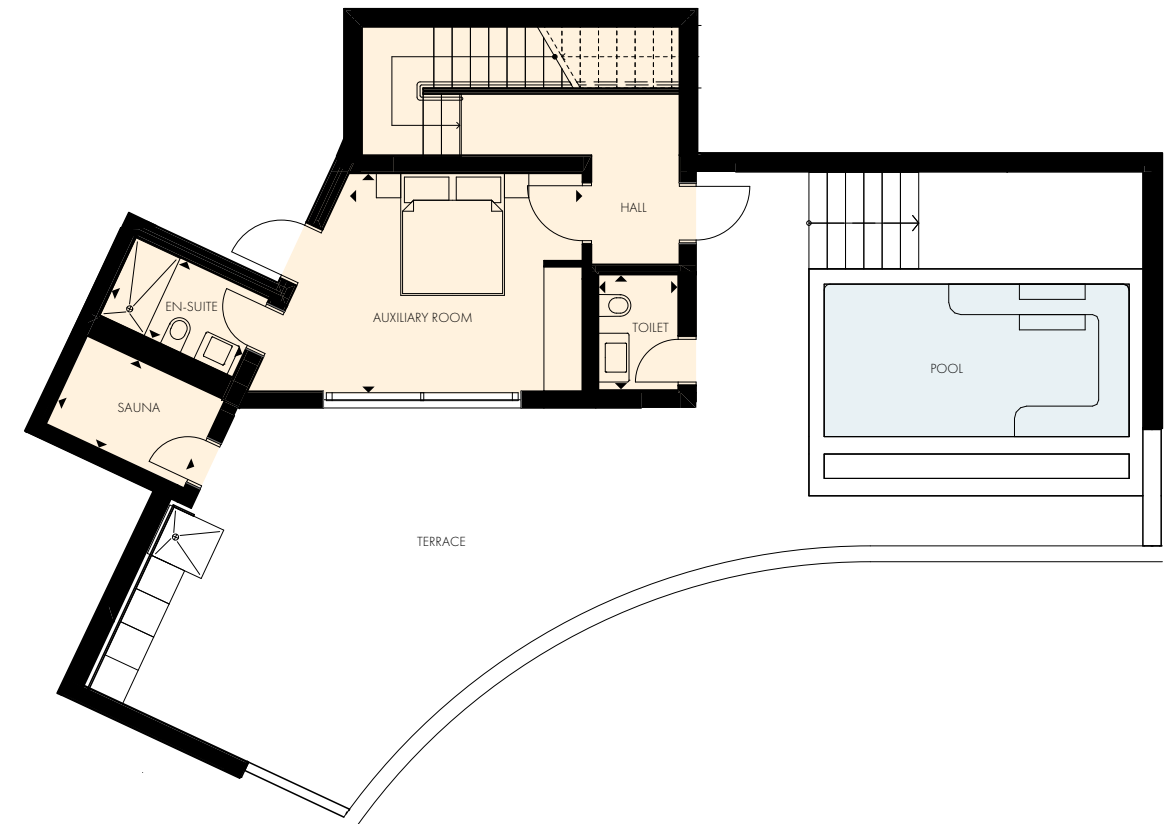
Floorplan location – level 04



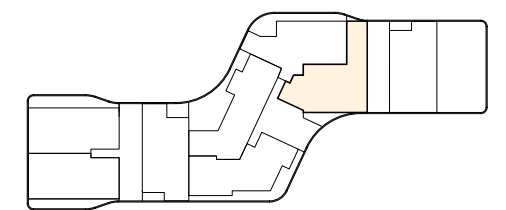
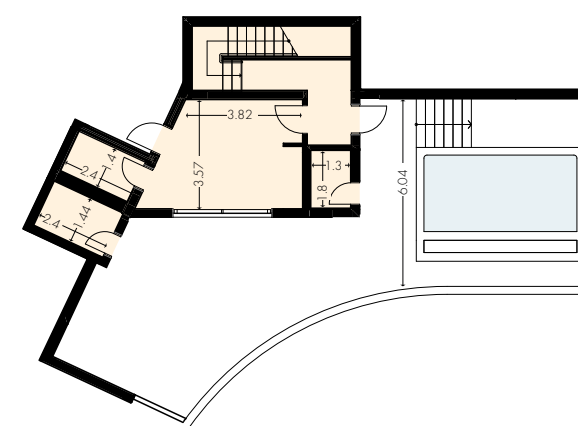
Floor plans shown are for approximate measurements only.  
Exact layout and sizes may vary.  
All measurements may vary within a tolerance of 5%.

# EDEN ROC PLOT B

TYPE 15 – UPPER LEVEL



Floorplan location – level 05



Floor plans shown are for approximate measurements only.  
Exact layout and sizes may vary.  
All measurements may vary within a tolerance of 5%.



# EDEN ROC PLOT B

TYPE 16 – LOWER LEVEL

## PENTHOUSE

**Penthouse**  
408

**Indoor area**  
125.44 m<sup>2</sup>

**Covered veranda**  
50.90 m<sup>2</sup>

**Uncovered veranda**  
83.04 m<sup>2</sup>

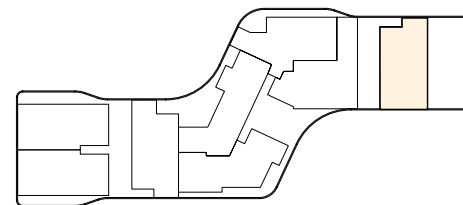
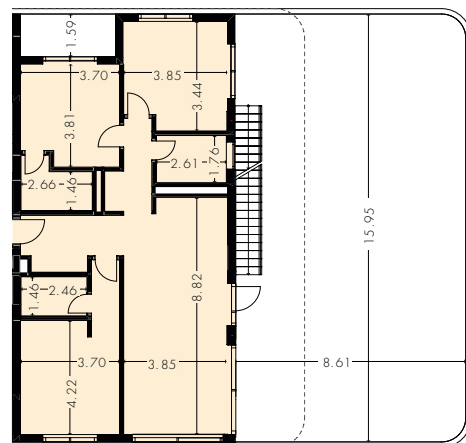
**Auxiliary area**  
17.70 m<sup>2</sup>

**Roof terrace**  
153.10 m<sup>2</sup>

**Total area**  
467.54 m<sup>2</sup>



Floorplan location – level 04



Floor plans shown are for approximate measurements only.  
Exact layout and sizes may vary.  
All measurements may vary within a tolerance of 5%.

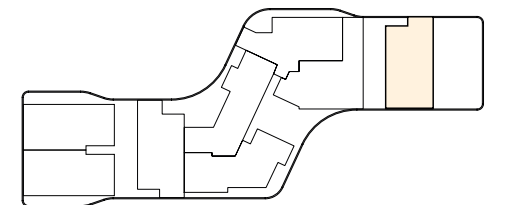
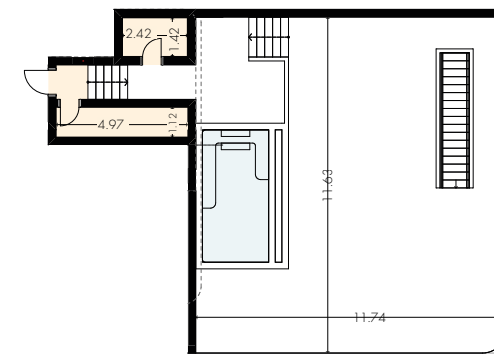


# EDEN ROC PLOT B

TYPE 16 – UPPER LEVEL



Floorplan location – level 05



Floor plans shown are for approximate measurements only.  
Exact layout and sizes may vary.  
All measurements may vary within a tolerance of 5%.



# SIGNATURE FINISHES

## ELEGANCE PACKAGE

EVERY PROPERTY IS DELIVERED WITH SIGNATURE TOP STANDARD FINISHES:

- | Fully completed finishings
- | Semisolid parquet floors in each room
- | Marble floor and walls in the toilets and bathrooms
- | High ceilings (3.10 m)
- | Security and fireproof entrance doors
- | Intercom system
- | Water underfloor heating
- | Central VRF conditioning
- | High standard sanitary ware from European brands
- | Thermal aluminium window frames with double glazing
- | High standard kitchen cabinets
- | High standard wardrobes from European brands
- | Soft closers for kitchen units
- | Penthouses enjoy private roof terraces with pools

**NOTE:** Movable furniture, home appliances & interior items are extras



# SIGNATURE PENTHOUSES

WE HAVE REIMAGINED THE IDEA OF WHAT A PENTHOUSE SHOULD BE. THE SIGNATURE PENTHOUSES ARE FEATURED ALMOST IN ALL APARTMENT DEVELOPMENTS AND REPRESENT THE BEST CHOICE FOR A DEMANDING AND SOPHISTICATED CUSTOMER WHO EXPECTS THE BEST OF COMFORT, STYLE AND PRIVACY.

- | Sizable roof space
- | Decking floors
- | Mosaic tiled swimming pool with jacuzzi
- | Barbecue

**NOTE:** Movable furniture & interior items are extras



# IMMIGRATION OPPORTUNITIES

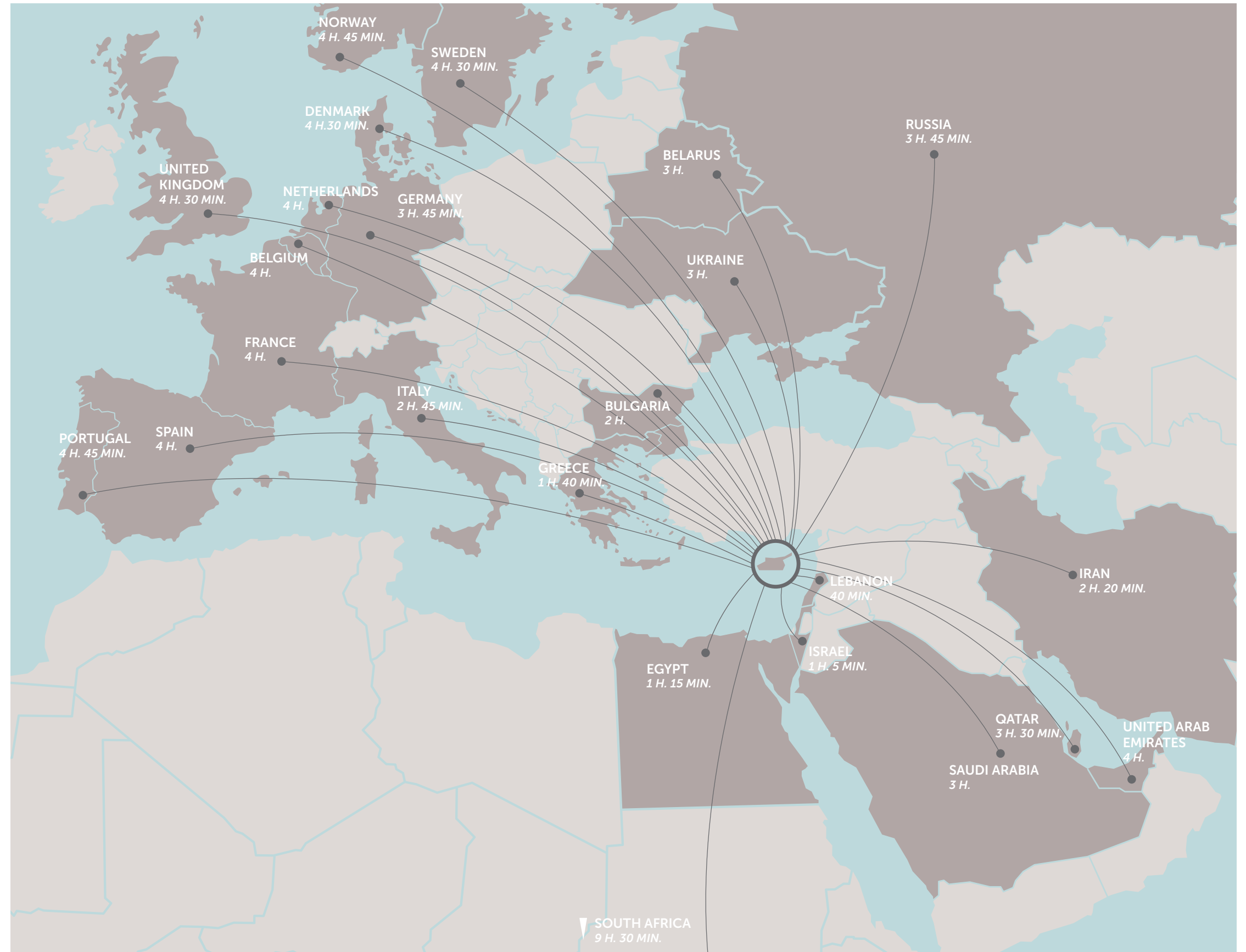
## PERMANENT RESIDENCE PERMIT

UNIQUE CYPRUS PERMANENT RESIDENCY FOR PROPERTY BUYERS

- | Lifelong validity
- | For all family members inc. children and parents
- | Possibility to own a business in Cyprus

The Cyprus Permanent Residence Program (PRP) grants the right to travel within the EU with less elaborate visa requirements and may be the first step towards a successful application for the Cyprus Investment Programme. We offer an “A to Z” service for non-EU citizens seeking residency in Cyprus by means of buying a property.

To be granted a life-long (permanent) residence permit in Cyprus, the applicant needs to purchase a new residential property or two new properties from the same property development company at a total price of 300 000 Euros excluding VAT. At the time of submission of the application, 200 000 Euros (excluding VAT) must be transferred in settlements of the property and the contract of sale must be registered at the Lands Office. The issuance of the Permanent Residence Permit takes approximately 2 months from the day of submission of all relevant documentation and covers all family members, including financial dependent children under 25 years old. A Cyprus Permanent Residence Permit allows the holder to stay in Cyprus all year round.





28 Ampelakion Street, Germasogeia,  
4046 Limassol, P.O.Box 70649, Cyprus  
Office: +357 25 315 318 • Fax: +357 25 315 301

---

[sales@prime-property.com](mailto:sales@prime-property.com)

 [prime.property.group.ltd](https://www.facebook.com/prime.property.group.ltd)

[www.prime-property.com](http://www.prime-property.com)

