

AQUA VISTA



experience a life like no other

Aqua Vista

INTRODUCING LAKE VIEW RESIDENCE, A REFINED COLLECTION OF 1-, 2- AND 3- BEDROOM APARTMENTS

This is a place where elegance meets comfort providing a sophisticated home accoutered with those warmly touches and well thought out details. Each residence welcomes you with open plan high quality kitchen layouts, living and dining areas perfectly designed for food preparation and those intimate moments and bathrooms and toilets are complemented with indulgent sanitary ware.



Aqua Vista is a tranquil oasis of calm in a beautiful suburban area of Limassol that boasts breathtaking panoramic views of the sea and your stunning local. The outstanding residence is the perfect illustration of a luxurious contemporary lifestyle that offers flexibility and pure comfort. Complete with all the benefits of a luxury accommodation to curate a unique array of on-site facilities and offer a high degree of style, space and opulence. A boutique residence of luxury and affluence that provides a living experience like no other.



major benefits

- | Breathtaking sea and city panoramas
- | Wide range of different size apartments and penthouses
- | Unique gated compound with indoor facilities: gym, pool and resident roof top terraces
- | New popular suburban neighborhood of Limassol – Polemidia

- | Modern architecture
- | Spacious layouts
- | Provisions for underfloor heating
- | Close driving distance to the famous Heritage School



introduction

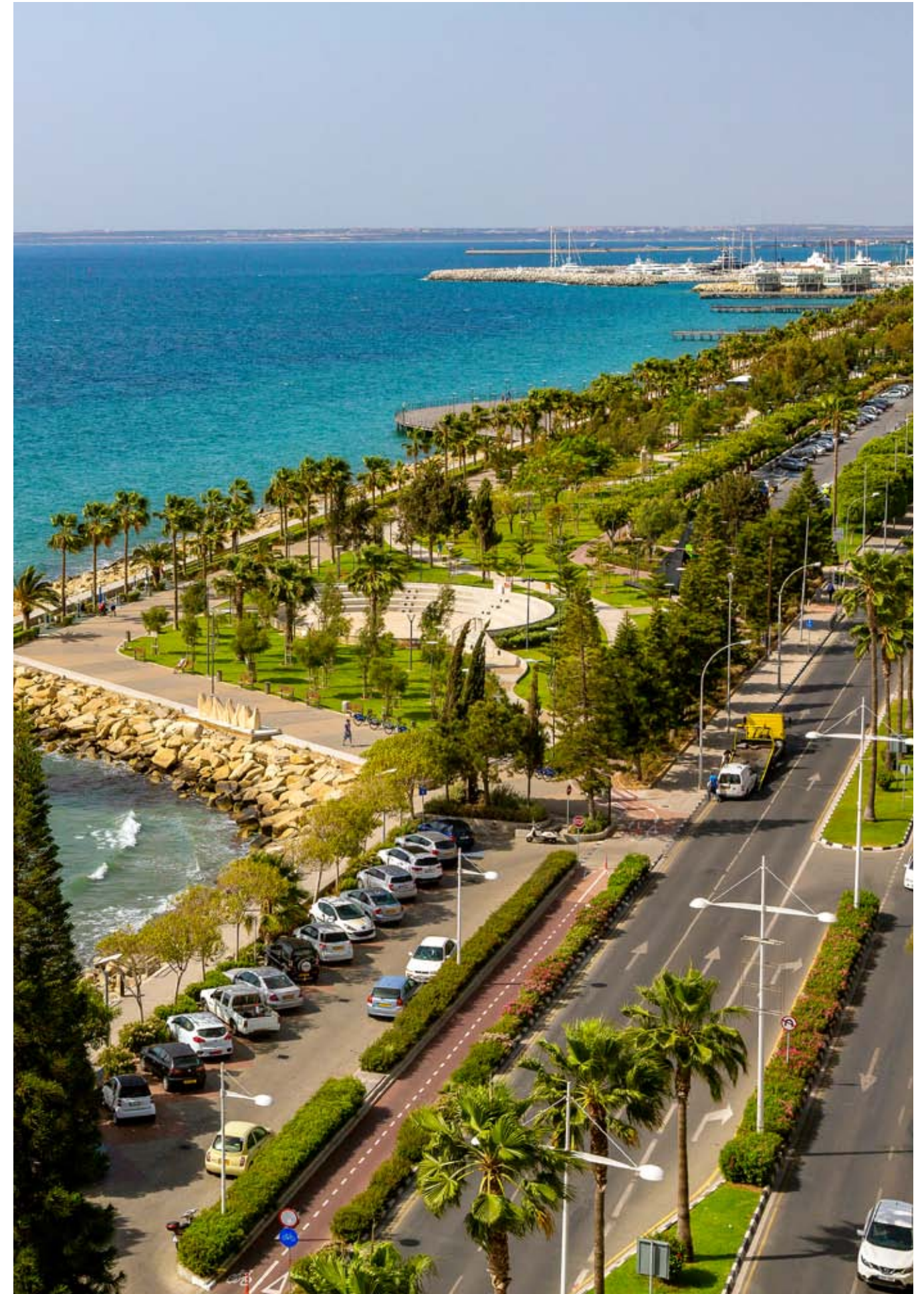
**LIMASSOL
COMBINES
THE FAST PACE
OF A CITY AND
THE COMFORT
OF A FIRST-CLASS
MEDITERRANEAN
RESORT**

Limassol is the second largest urban area in Cyprus, located on the southern coast, with an urban population of 160,000 – 176,700.

Limassol was built between two ancient cities – Amathus and Kourion – and during Byzantine rule it was known as Neapolis (new town). Limassol's historical centre is located around its medieval Limassol Castle and the Old Port. Today the city spreads along the Mediterranean coast and has extended much farther than the castle and port, with its suburbs stretching along the coast to Amathus.

The history of Limassol is largely associated with the Third Crusade of Richard the Lionheart, who arrived in Limassol in 1191 on his way to the Holy Land. He arrested the renegade Byzantine Greek governor of Cyprus Limassol, Isaac Komnenos, taking over the entire island, and bringing the long Byzantine dominion of Cyprus to an end. Richard also celebrated his marriage with Berengaria who had received the crown as queen of England in Limassol. Richard destroyed Amathus and the inhabitants were transferred to Limassol.

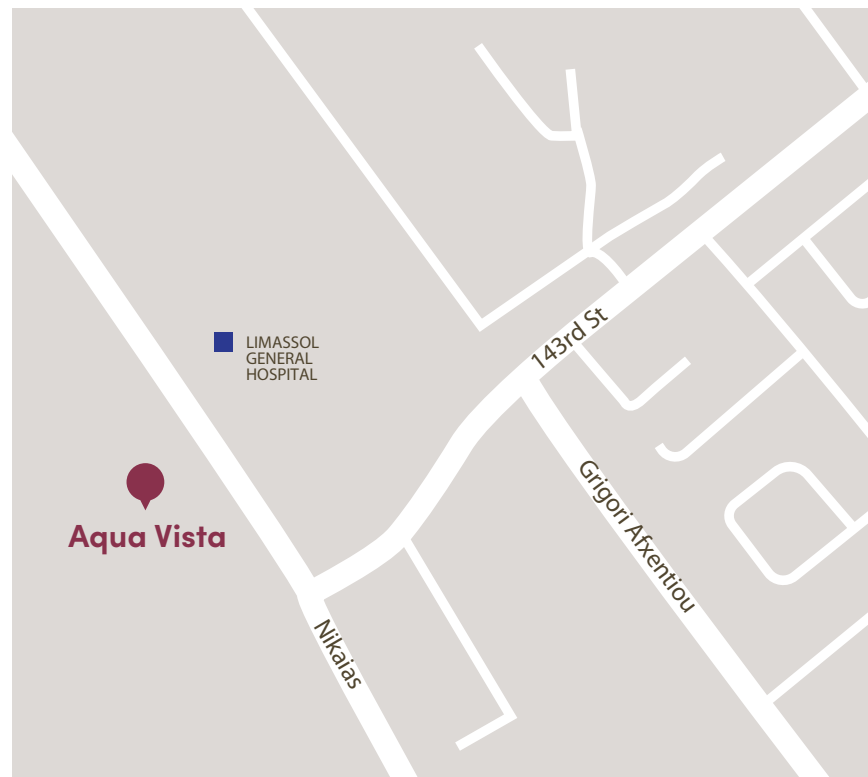
Limassol has a Subtropical-Mediterranean climate with warm to hot and dry summers as well as very mild winters, separated by short springs and autumns which are generally pleasant.



location

LIVING IN POLEMIDIA OFFERS RESIDENTS A DENSE SUBURBAN FEEL OF FREEDOM, TRANQUILITY AND PRIVACY WITH STUNNING PANORAMIC VIEWS OF THE MEDITERRANEAN SEA AND THE CITY

Outside of your utopian home, you are glorified with a remarkable location situated in one of the most prudent areas in Limassol, Polemidia. Unequalled proximity to the city centre as well as immediate access to all modern first class infrastructures and facilities. A destination that speaks for itself. It is only a 10 minute drive from Polemidia to the city centre and through to the buzzing business hub of Limassol. Continue a few kilometers to the charming sea front and Limassol Marina with its waterfront high end restaurants and picturesque blue waters, perfect for a leisurely stroll.



exterior



exterior



exterior

breathtaking
sea and city
panorama views



exterior



exterior

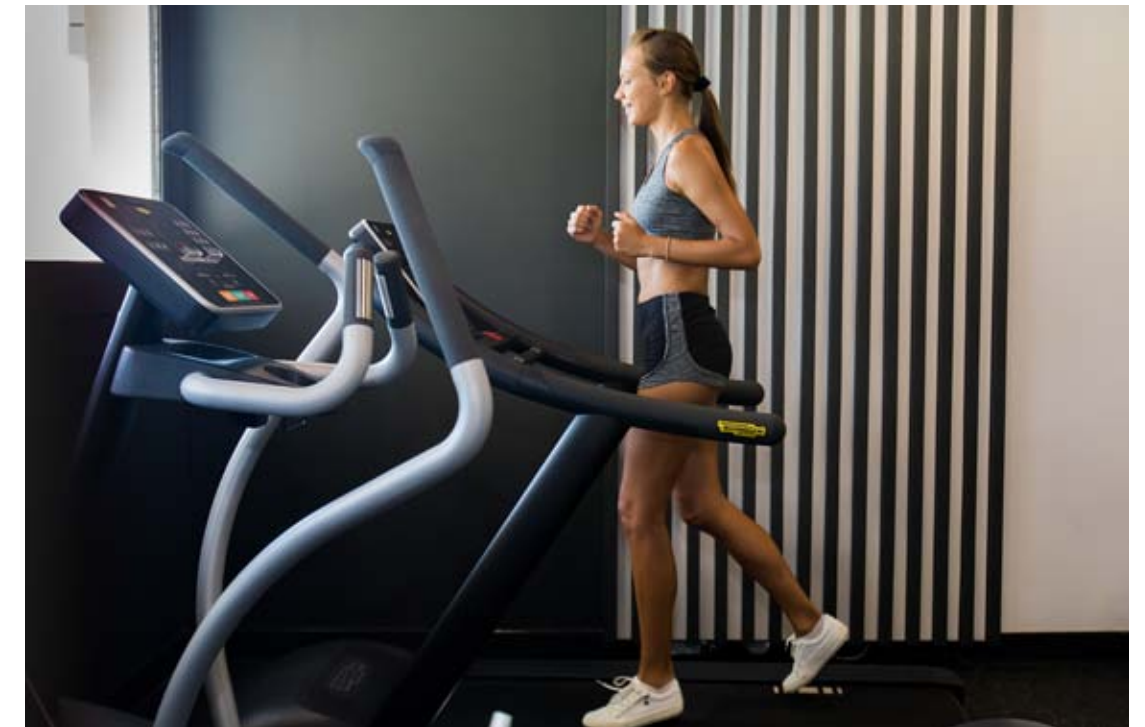


exterior



resident facilities

The building offers outdoor swimming pool, secure covered parking and a fully equipped gym



resident facilities



masterplan



choice of properties

block a

UNIT NO	PROPERTY TYPE	BEDROOMS	BATH-ROOMS	NO OF PARK SPACES	INDOOR AREA M ²	COV. VERANDA M ²	STORAGE M ²	COMMON AREA PER UNIT M ²	TOTAL AREA M ²
A101	Apartment	2	2	1	84.00	18.20	2.60	12.59	117.39
A102	Apartment	2	2	1	86.40	18.20	2.66	12.89	120.15
A103	Apartment	1	1	1	52.30	19.50	3.03	8.84	83.67
A104	Apartment	3	2	2	112.90	41.50	3.53	19.02	176.95
A105	Apartment	1	1	1	54.00	13.00	2.98	8.25	78.23
A201	Apartment	2	2	1	84.00	18.20	2.91	12.59	117.70
A202	Apartment	2	2	1	86.40	18.20	2.78	12.89	120.27
A203	Apartment	1	1	1	52.30	19.50	2.75	8.84	83.39
A204	Apartment	3	2	2	112.90	41.50	2.52	19.02	175.94
A205	Apartment	1	1	1	54.00	13.00	2.46	8.25	77.71
A301	Apartment	2	2	1	84.00	18.20	3.43	12.59	118.22
A302	Apartment	2	2	1	86.40	18.20	2.93	12.89	120.42
A303	Apartment	1	1	1	52.30	19.50	2.60	8.84	83.24
A304	Apartment	3	2	2	112.90	41.50	2.52	19.02	175.94
A305	Apartment	1	1	1	54.00	13.00	2.61	8.25	77.86
A401	Apartment	2	2	1	84.00	18.20	3.79	12.59	118.58
A402	Apartment	3	3	2	116.50	35.40	3.44	18.71	174.05
A403	Apartment	3	2	2	119.60	41.50	3.36	19.85	184.31
A404	Apartment	1	1	1	53.70	13.30	3.45	8.25	78.70

NOTE: the areas stated above may slightly differ upon issuance of relevant authority permits



floor plans



ground floor block a



floor 1 block a



Unit №	Total Area, m ²
101	117.39
102	120.15
103	83.67
104	176.95
105	78.23



floor plans



floor 2 block a



Unit №	Total Area, m ²
201	117.70
202	120.27
203	83.39
204	175.94
205	77.71



floor 3 block a



Unit №	Total Area, m ²
301	118.22
302	120.42
303	83.24
304	175.94
305	77.86

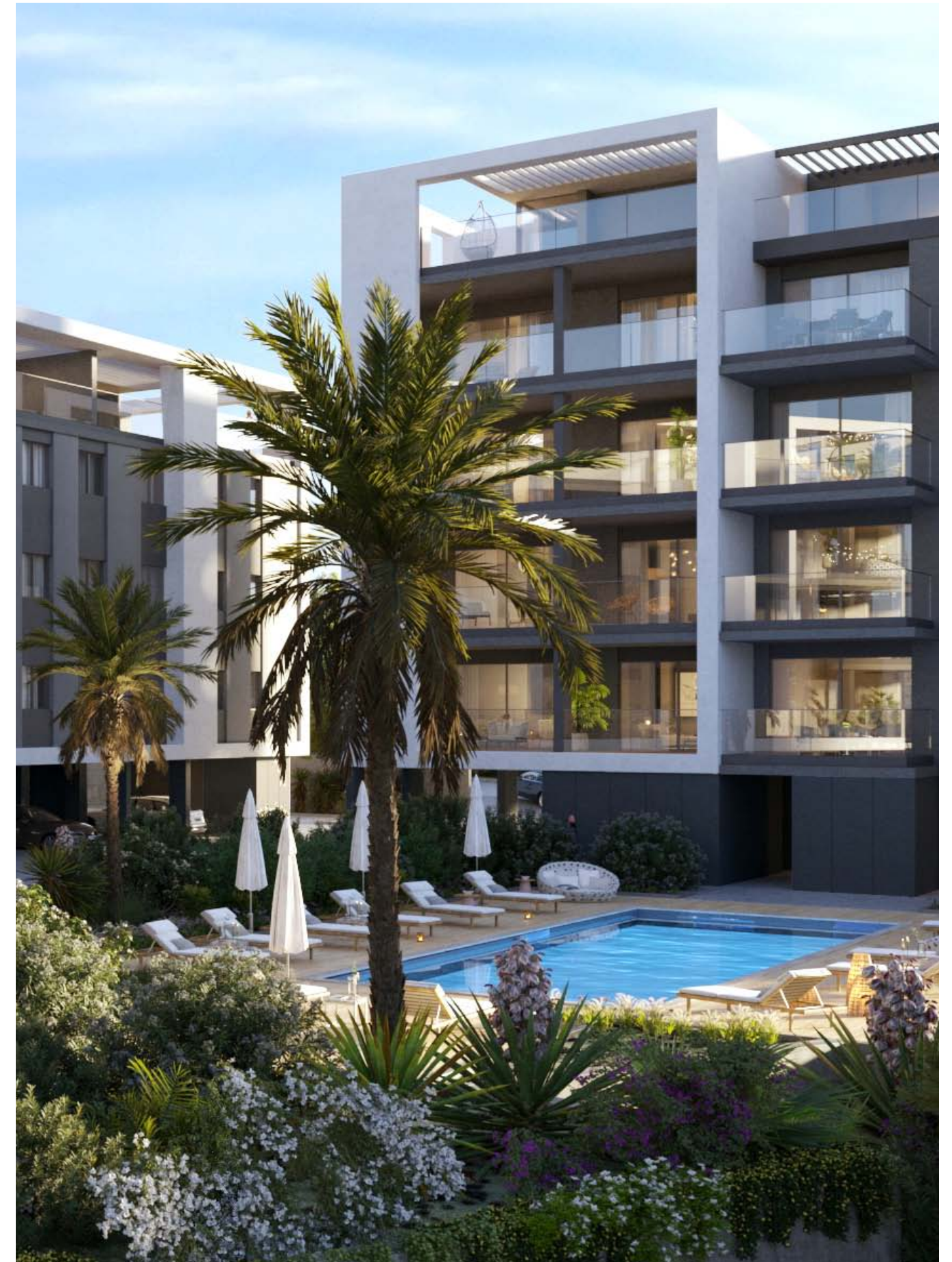


floor plans

floor 4
block a



Unit №	Total Area, m ²
401	118.58
402	174.05
403	184.31
404	78.70

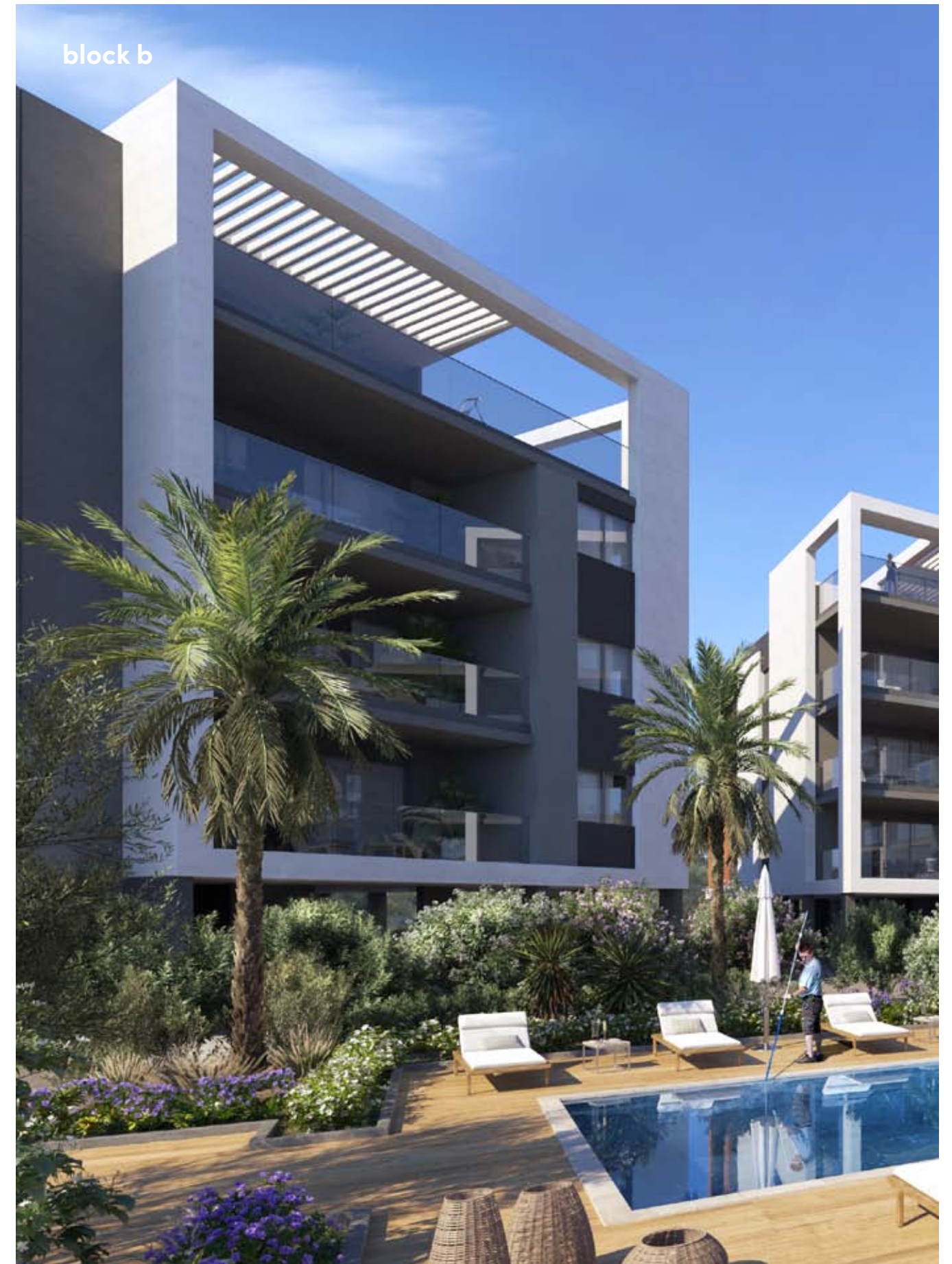


choice of properties

block b

UNIT NO	PROPERTY TYPE	BEDROOMS	BATHROOMS	NO OF PARK SPACES	INDOOR AREA M ²	COV. VERANDA M ²	STORAGE M ²	COMMON AREA PER UNIT M ²	TOTAL AREA M ²
B101	Apartment	3	2	2	118.70	38.40	5.30	25.53	187.93
B102	Apartment	1	1	1	52.00	15.20	4.80	10.92	82.92
B103	Apartment	2	2	1	84.20	17.30	3.40	16.49	121.39
B104	Apartment	2	2	1	85.00	17.80	3.50	16.70	123.00
B201	Apartment	3	2	2	118.70	38.40	4.80	25.53	187.43
B202	Apartment	1	1	1	52.00	15.20	3.20	10.92	81.32
B203	Apartment	2	2	1	84.20	17.30	3.10	16.49	121.09
B204	Apartment	2	2	1	85.00	17.80	3.10	16.70	122.60
B301	Apartment	3	3	2	119.30	38.40	5.00	25.63	188.33
B302	Apartment	1	1	1	51.80	15.20	3.20	10.89	81.09
B303	Apartment	2	2	1	84.20	17.30	4.20	16.49	122.19
B304	Apartment	2	2	1	85.00	17.80	4.40	16.70	123.90

NOTE: the areas stated above may slightly differ upon issuance of relevant authority permits



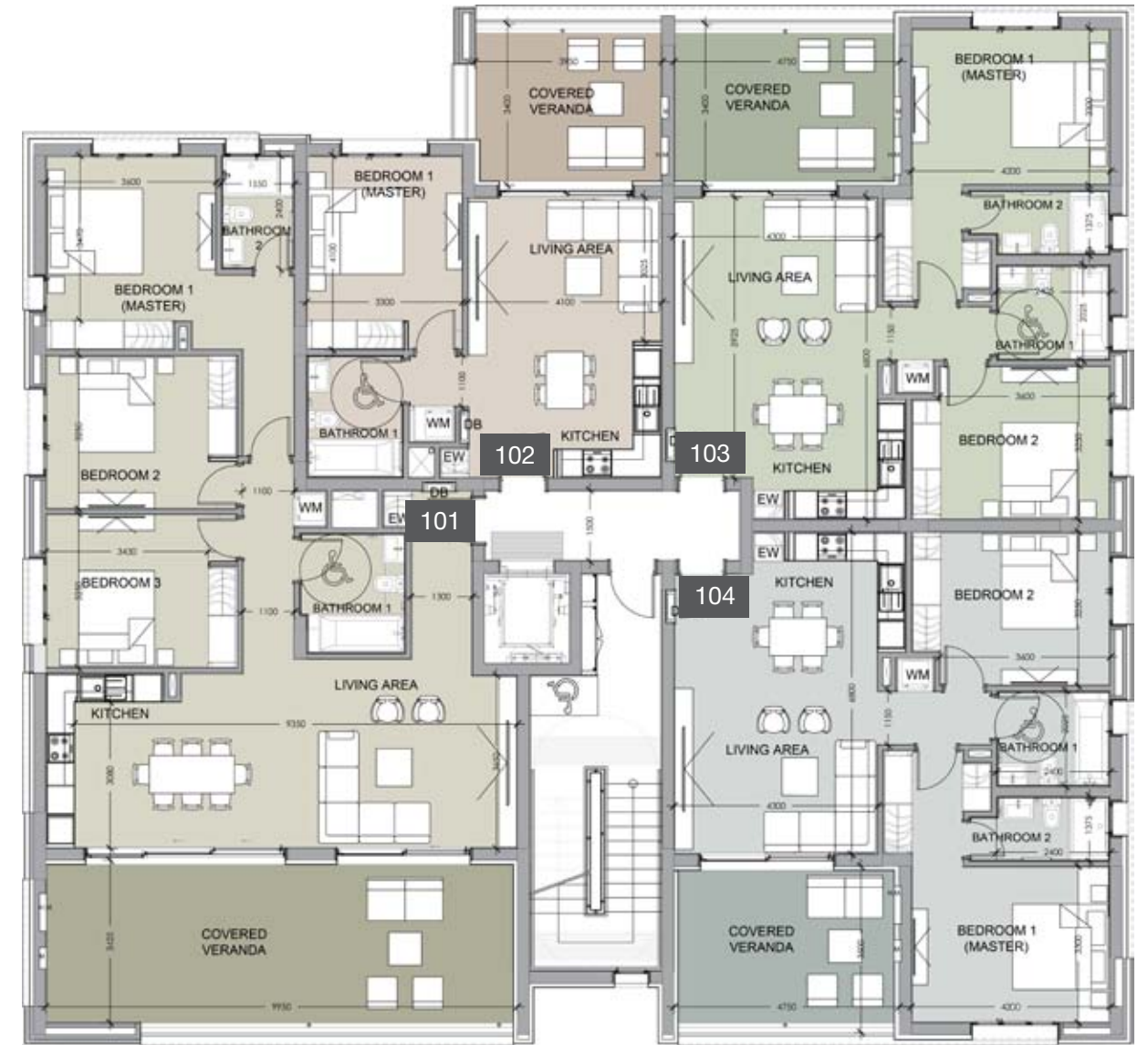
floor plans



ground floor block b



floor 1 block b



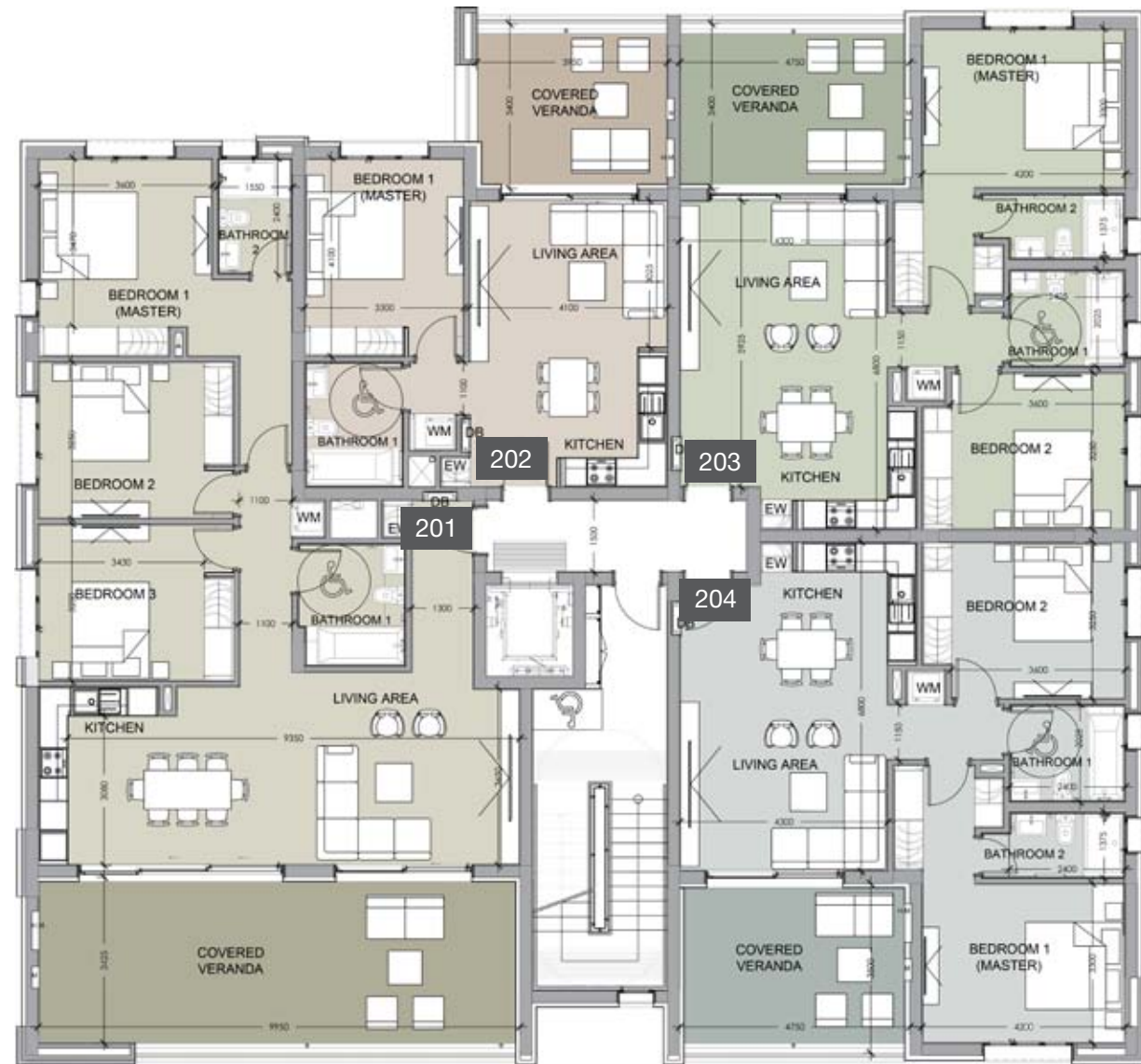
Unit №	Total Area, m ²
101	187.93
102	82.92
103	121.39
104	123.00



floor plans



floor 2 block b



Unit №	Total Area, m ²
201	187.43
202	81.32
203	121.09
204	122.60



floor 3 block b



Unit №	Total Area, m ²
301	188.33
302	81.09
303	122.19
304	123.90

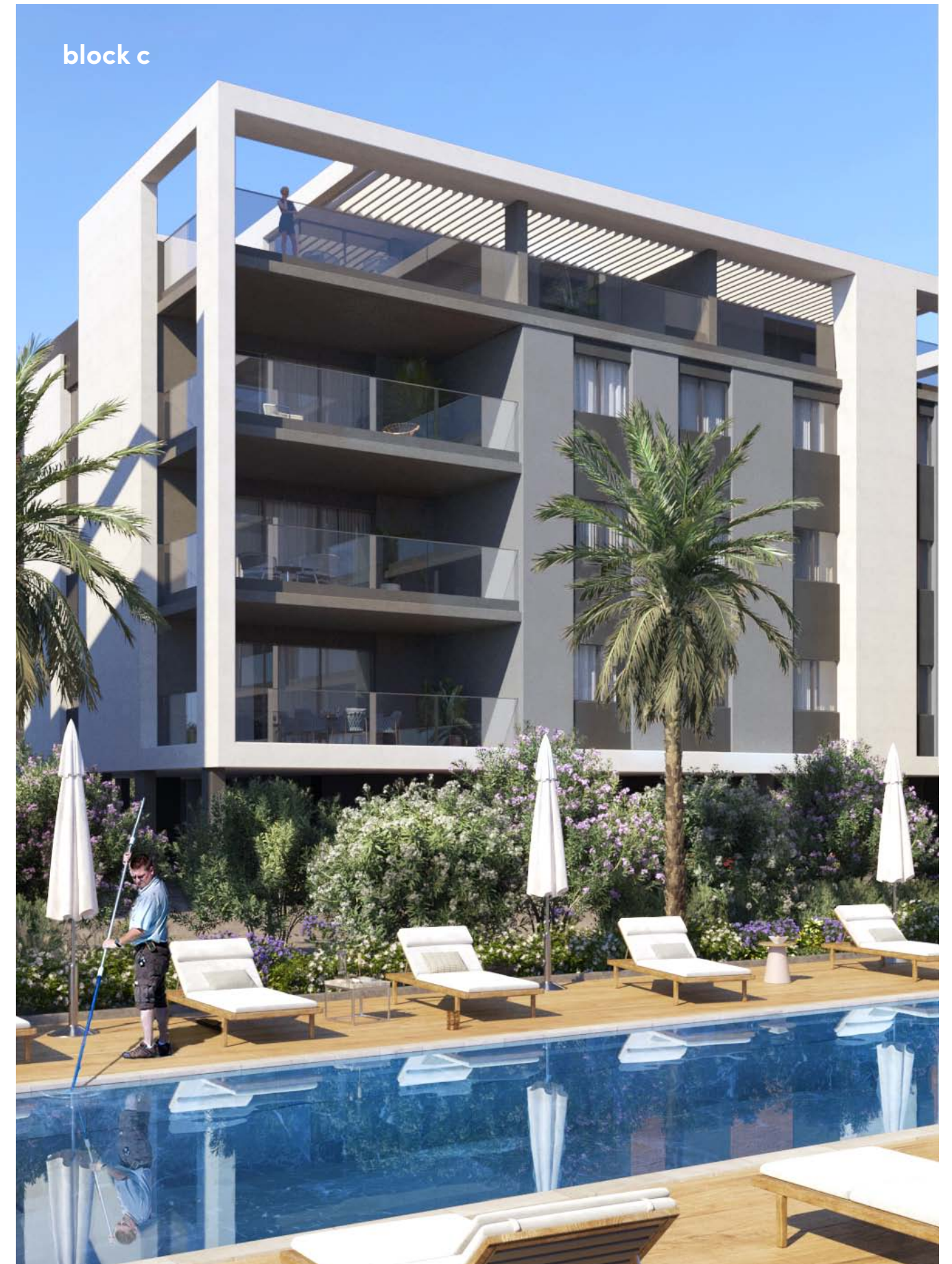


choice of properties

block c

UNIT NO	PROPERTY TYPE	BEDROOMS	BATHROOMS	NO OF PARK SPACES	INDOOR AREA M ²	COV. VERANDA M ²	STORAGE M ²	COMMON AREA PER UNIT M ²	TOTAL AREA M ²
C101	Apartment	3	2	1	114.80	29.00	2.25	23.20	169.25
C102	Apartment	2	2	1	90.00	23.00	2.50	18.23	133.73
C103	Apartment	2	2	1	89.00	23.00	3.61	18.07	133.68
C104	Apartment	1	1	1	55.40	11.70	3.26	10.83	81.19
C201	Apartment	3	2	1	114.80	29.00	4.31	23.20	171.31
C202	Apartment	2	2	1	90.00	23.00	2.66	18.23	133.89
C203	Apartment	2	2	1	89.00	23.00	3.36	18.07	133.43
C204	Apartment	1	1	1	55.40	11.70	3.10	10.83	81.03
C301	Apartment	3	3	1	114.80	29.00	2.70	23.20	169.70
C302	Apartment	2	2	1	90.00	23.00	4.10	18.23	135.33
C303	Apartment	2	2	1	89.00	23.00	5.30	18.07	135.37
C304	Apartment	1	1	1	55.40	11.70	2.54	10.83	80.47

NOTE: the areas stated above may slightly differ upon issuance of relevant authority permits



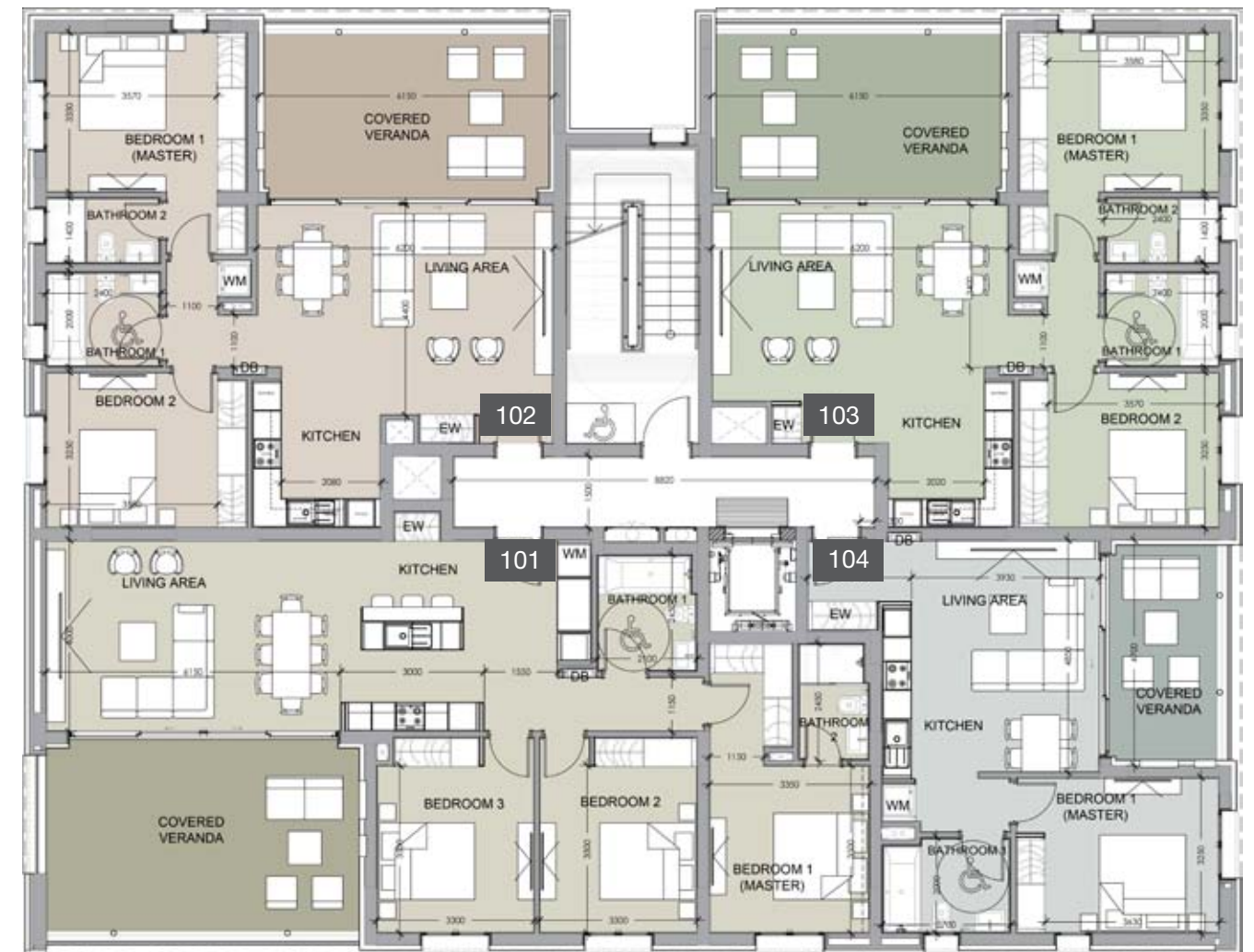
floor plans



ground floor block c



floor 1 block c



Unit №	Total Area, m ²
101	169.25
102	133.73
103	133.68
104	81.19



floor plans



floor 2 block c



Unit №	Total Area, m ²
201	171.31
202	133.89
203	133.43
204	81.03



floor 3 block c



Unit №	Total Area, m ²
301	169.70
302	135.33
303	135.37
304	80.47





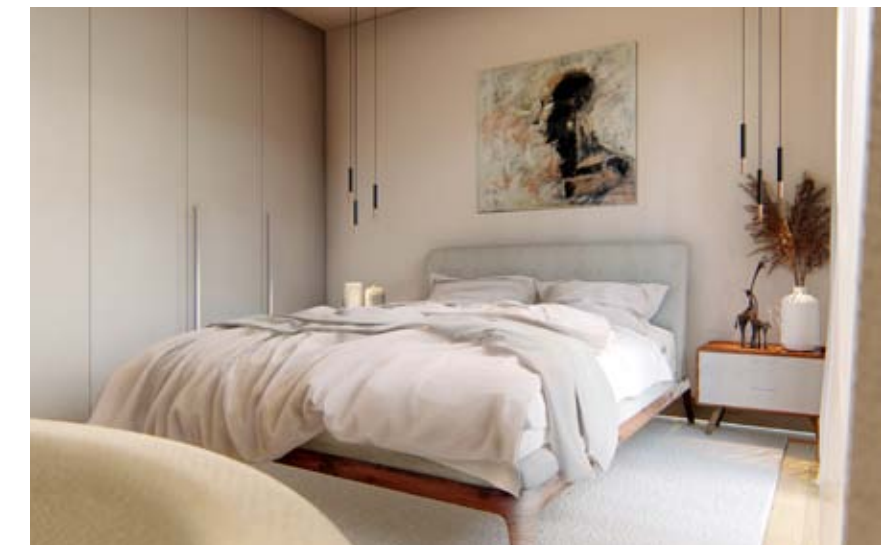
signature finishes

smart

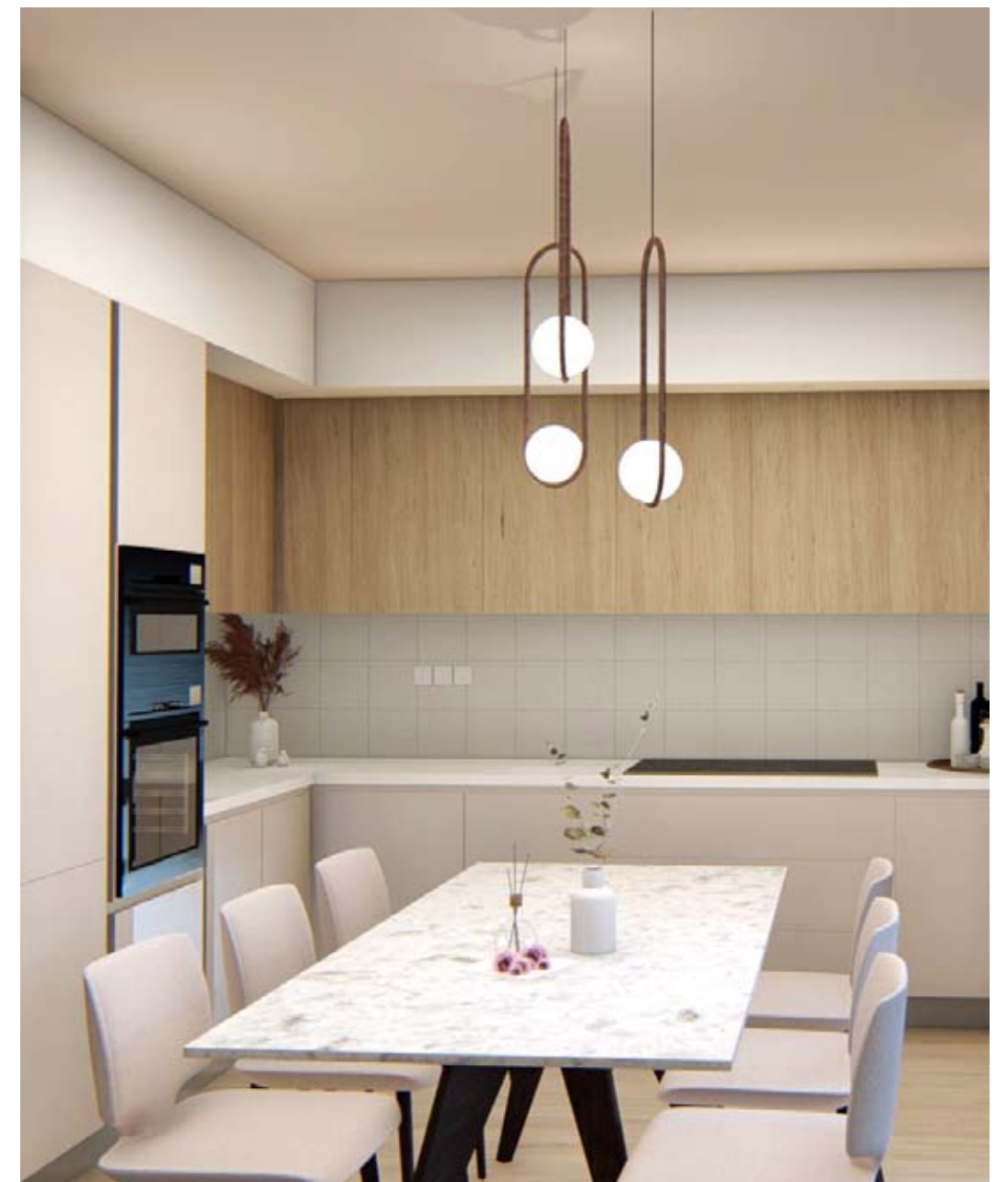
EVERY PROPERTY IS DELIVERED WITH SIGNATURE TOP STANDARD FINISHES:

- Laminate parquet in each room
- Quality ceramic tiles in bathrooms and toilets
- Aluminium window frames with double glazing
- High quality entrance doors
- Provisions for split A/C units in all rooms
- Sanitary ware from European brands
- High quality kitchen cabinets and wardrobes
- Artificial granite worktop

NOTE: movable furniture, home appliances & interior items are extras



• signature finishes



notes

A series of horizontal dotted lines for writing notes.

**YOUR PERSONAL
PROPERTY CONSULTANT**

A dashed rectangular box for a signature or stamp.

