



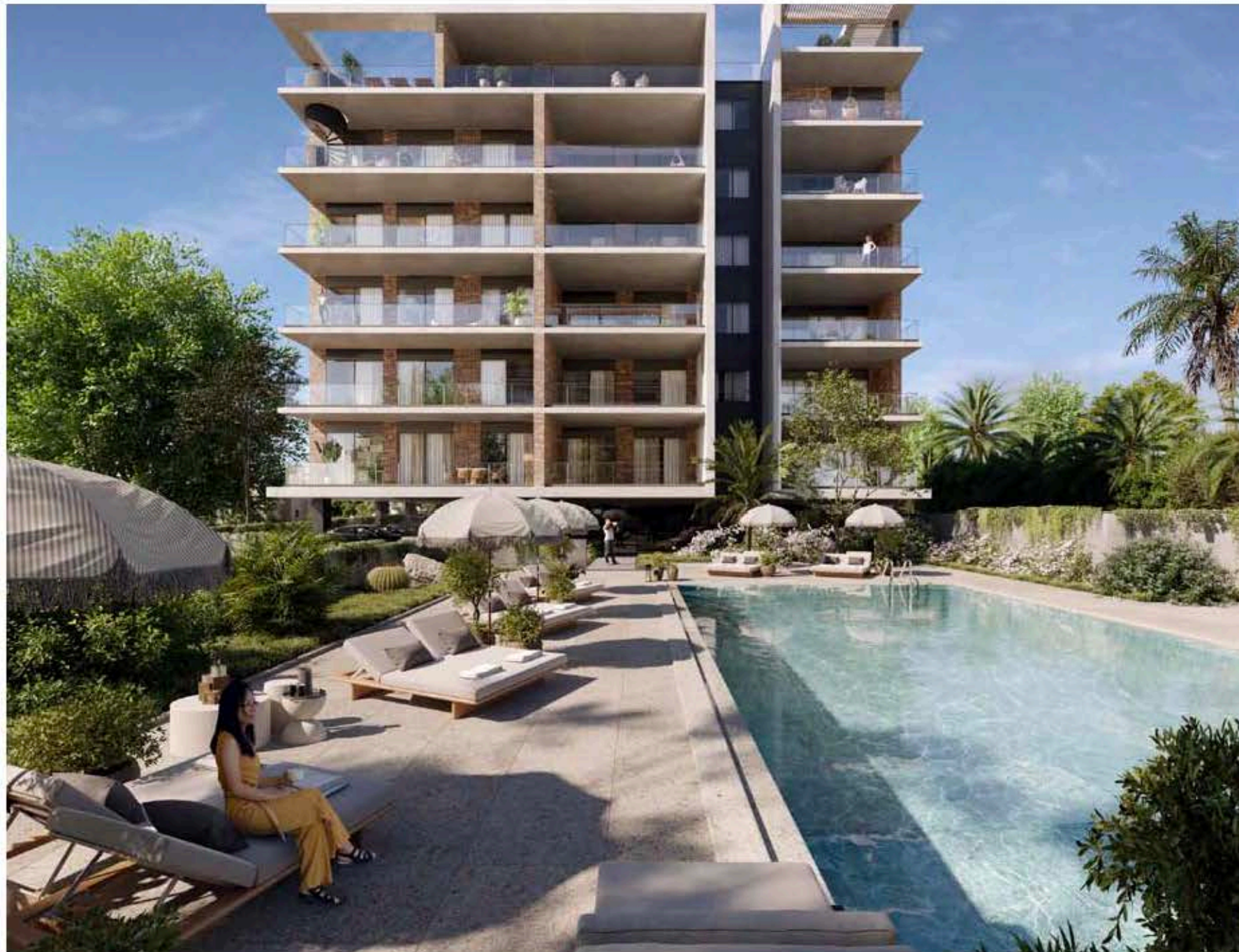
**SANTI**



# santi

**A MAGNIFICENT PROJECT IN THE HEART OF AN EXCLUSIVE HIGH END AREA THAT OFFERS AN OPULENT LIFESTYLE WITH TRANQUILLITY AND SERENITY**

Each luxurious apartment is created to be enriched by your vision, using floor to ceiling windows looking out to breathtaking views of the vibrant city and neighbouring hills as your backdrop. Experience a comfortable sophisticated home kitted out with those homely touches and well thought out details. Each apartment provides an intelligent and functional design that inspires that feeling of pure luxury.



**ALL THE RESIDENCES WELCOME YOU WITH CONTEMPORARY GOURMET QUALITY KITCHEN LAYOUTS, LIVING AND DINING AREAS**

Designed perfectly for food preparation and entertainment and bathrooms and toilets complemented with indulgent sanitary ware. Finding a pocket of calm at Santi is a must, relax and enjoy a sauna or relieve your stress through exercise at the fully equipped gym followed by a breath of fresh air on your veranda overlooking stunning views of your bustling locale.



\*All 3D images and photographs consist of indicative information and the project can differ insignificantly from the displayed images. Furniture and interior items are extras.

# major benefits

- | 350 meters to the sandy Dasudi Beach with Eucalyptus Park
- | One of the most prestigious areas in Limassol
- | Tranquil and peaceful neighbourhood
- | City amenities are within walking distance
- | Fully equipped gym and yoga room
- | Common swimming pool, sauna, steam room

- | Covered parking
- | Spacious living and dining areas
- | Breathtaking city views
- | High ceilings of 3.15 meters
- | High standards of finish
- | Under floor heating and air conditioning



\*All 3D images and photographs consist of indicative information and the project can differ insignificantly from the displayed images. Furniture and interior items are extras.

# exterior



350 meters to the sandy  
Dasoudi beach with  
eucalyptus park

# introduction

**LIMASSOL  
COMBINES  
THE FAST PACE  
OF A CITY AND  
THE COMFORT  
OF A FIRST-CLASS  
MEDITERRANEAN  
RESORT**

Limassol is the second largest urban area in Cyprus, located on the southern coast, with an urban population of 160,000 – 176,700.

Limassol was built between two ancient cities – Amathus and Kourion – and during Byzantine rule it was known as Neapolis (new town). Limassol's historical centre is located around its medieval Limassol Castle and the Old Port. Today the city spreads along the Mediterranean coast and has extended much farther than the castle and port, with its suburbs stretching along the coast to Amathus.

The history of Limassol is largely associated with the Third Crusade of Richard the Lionheart, who arrived in Limassol in 1191 on his way to the Holy Land. He arrested the renegade Byzantine Greek governor of Cyprus Limassol, Isaac Komnenos, taking over the entire island, and bringing the long Byzantine dominion of Cyprus to an end. Richard also celebrated his marriage with Berengaria who had received the crown as queen of England in Limassol. Richard destroyed Amathus and the inhabitants were transferred to Limassol.

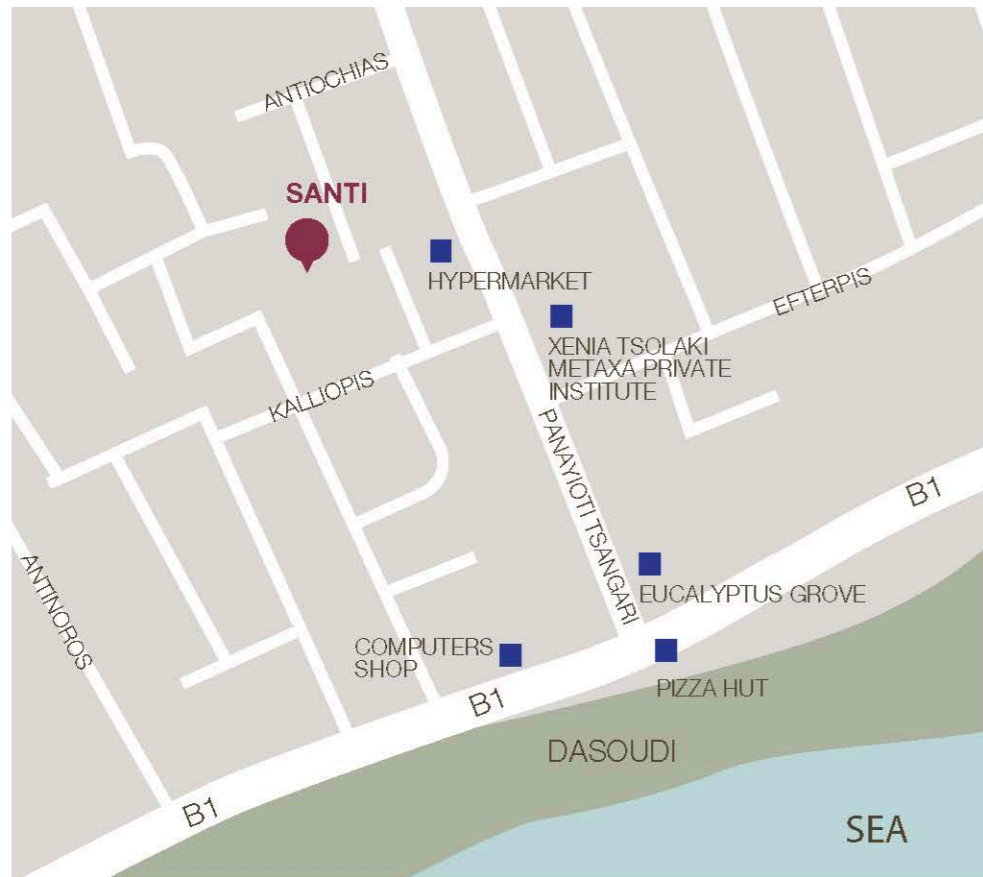
Limassol has a Subtropical-Mediterranean climate with warm to hot and dry summers as well as very mild winters, separated by short springs and autumns which are generally pleasant.



# location

**OUTSIDE  
YOUR IDYLIC  
LUXURIOUS  
HOME, YOU  
ARE BLESSED  
WITH AN  
INCREDIBLE  
LOCATION  
SITUATED NEAR  
GERMASOGEIA**

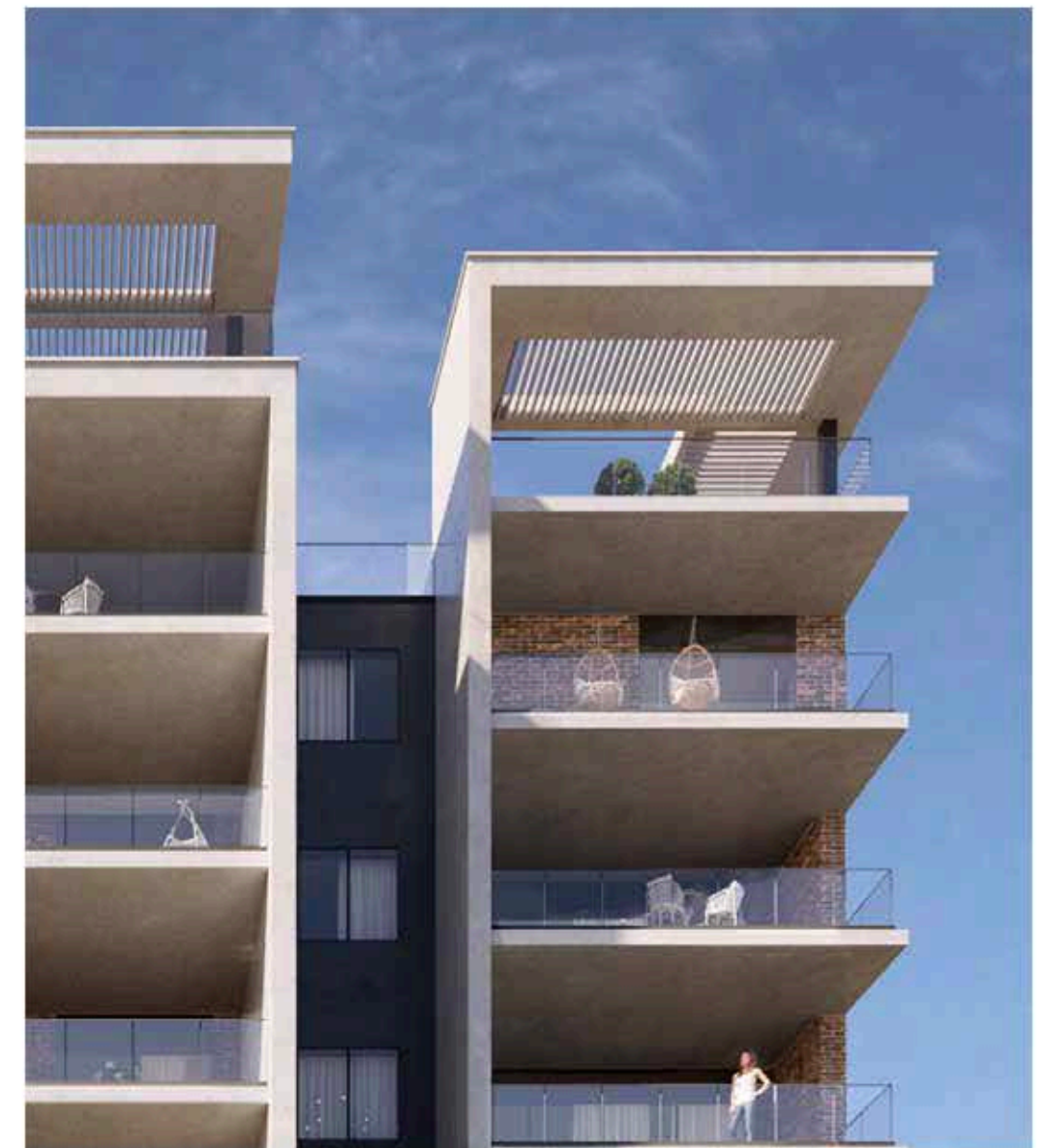
Just off one of the most desirable roads in Limassol, Papas area. Germasogeia serves up every simple aspect you could ever dream of on a silver spoon, from fine dining to high end boutiques and from business centres to leisure activities and everything in between. Located in Germasogeia – the heart of the Limassol tourist area, Dasoudi Beach is the most popular coastal strip, which provides everything for the perfect day out. It has golden sands, clean and calm seawaters and Eucalyptus Park. From enticing water sports to pleasurable fun and games, Limassol is the place to be.



# exterior



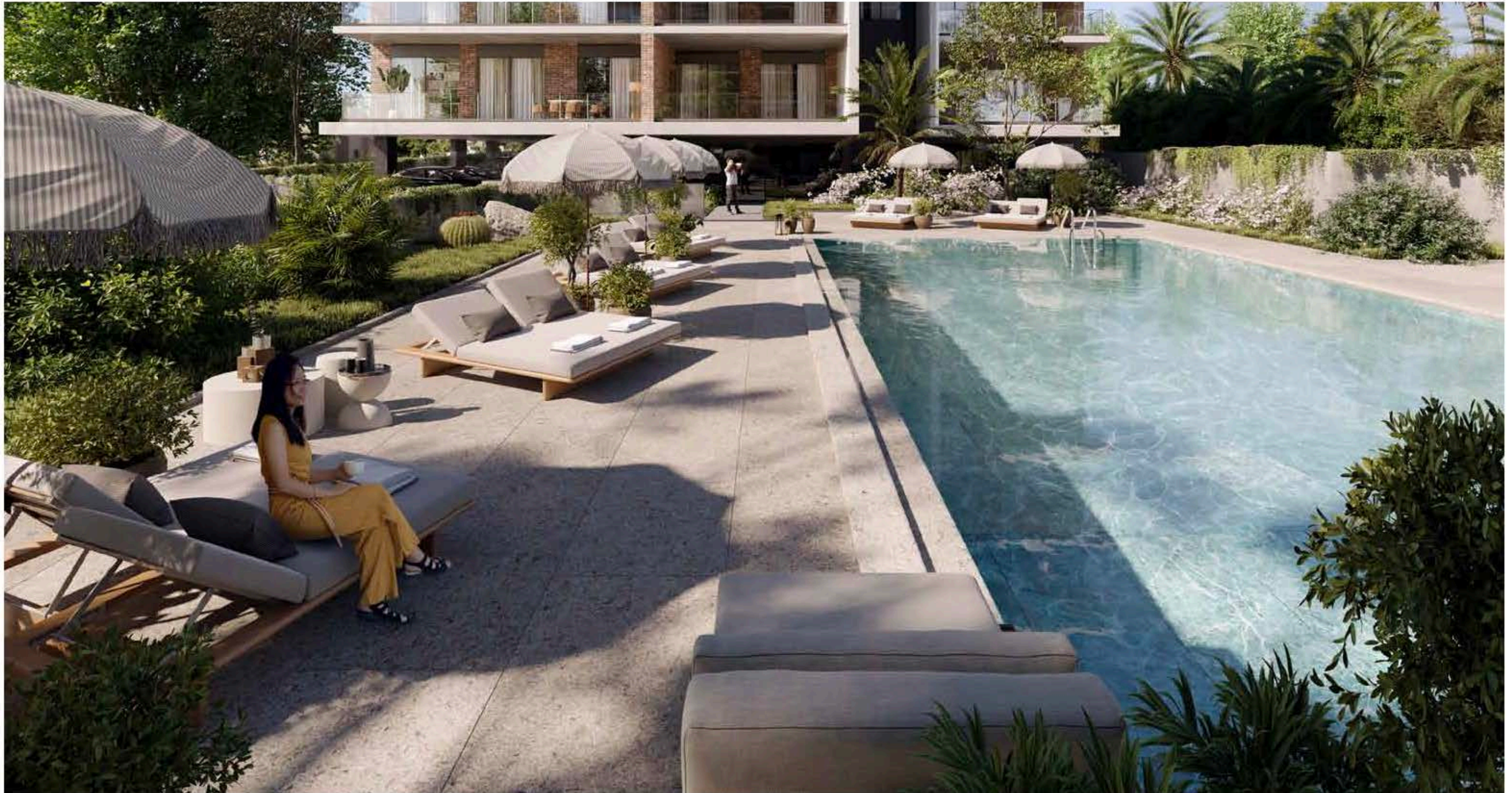
tranquil and peaceful neighbourhood



\*All 3D images and photographs consist of indicative information and the project can differ insignificantly from the displayed images. Furniture and interior items are extras.

exterior

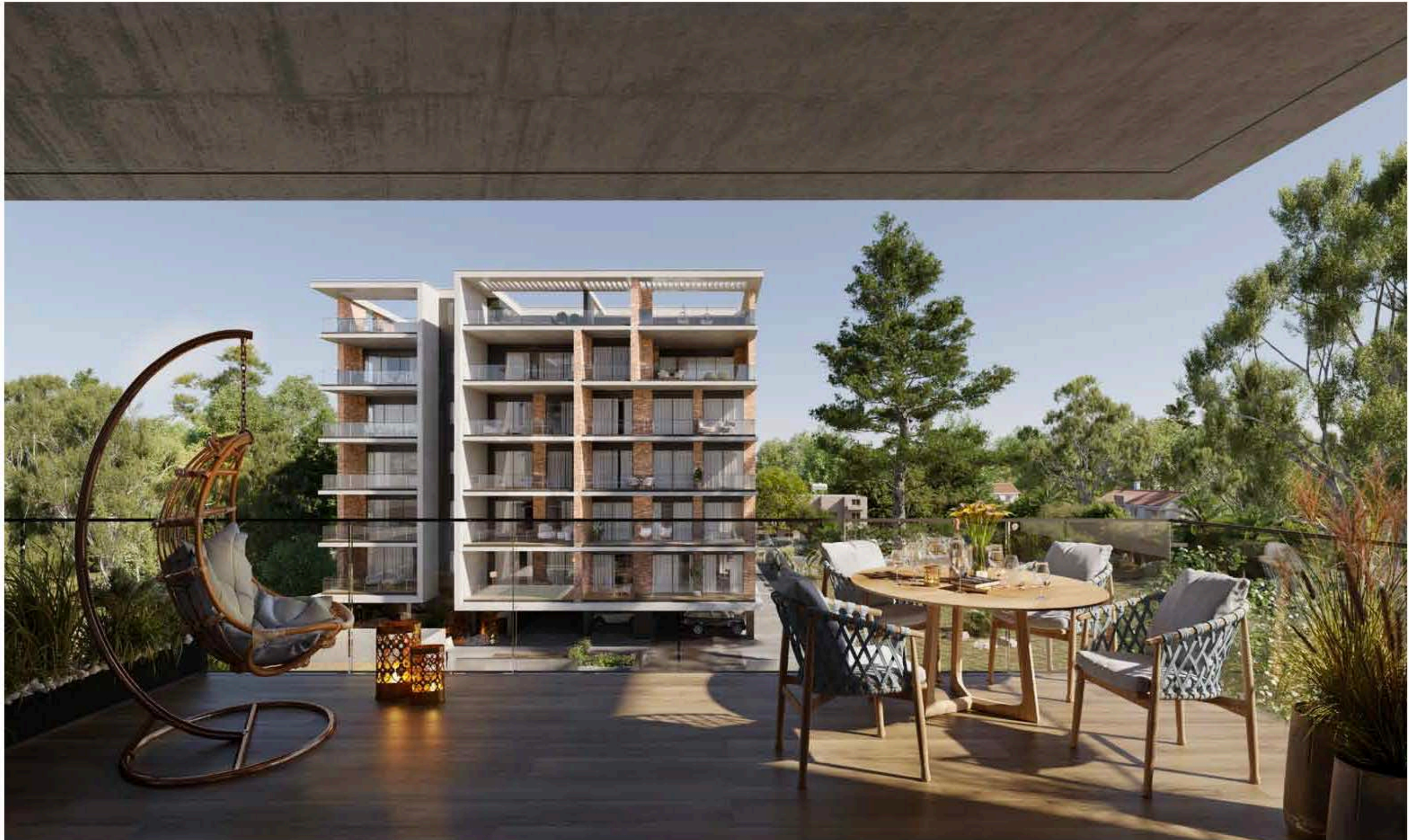
residents will  
luxuriate the communal  
swimming pool



\*All 3D images and photographs consist of indicative information and the project can differ insignificantly from the displayed images. Furniture and interior items are extras.



# exterior



\*All 3D images and photographs consist of indicative information and the project can differ insignificantly from the displayed images. Furniture and interior items are extras.

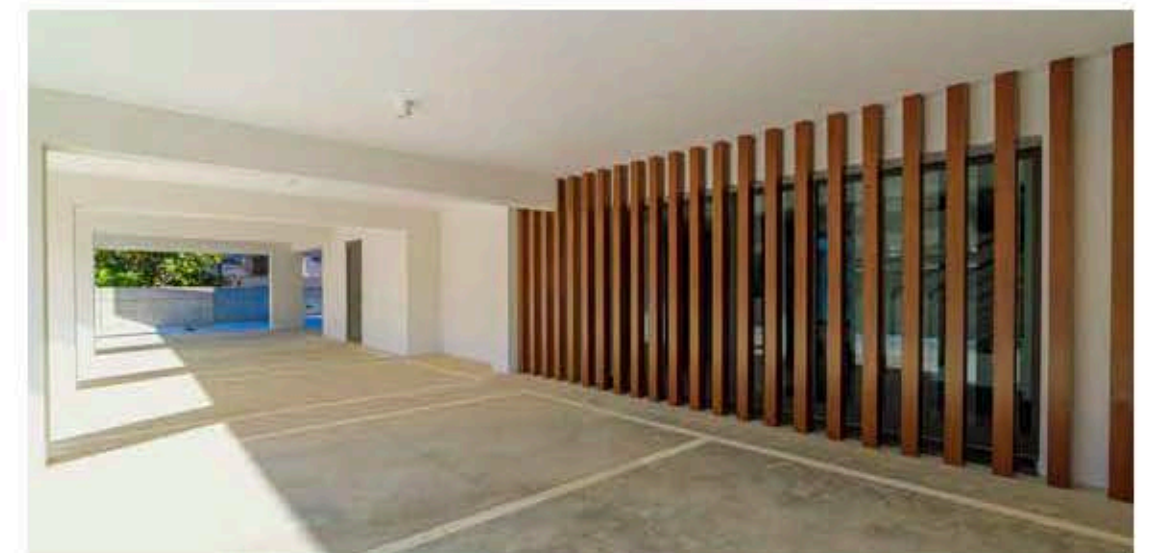
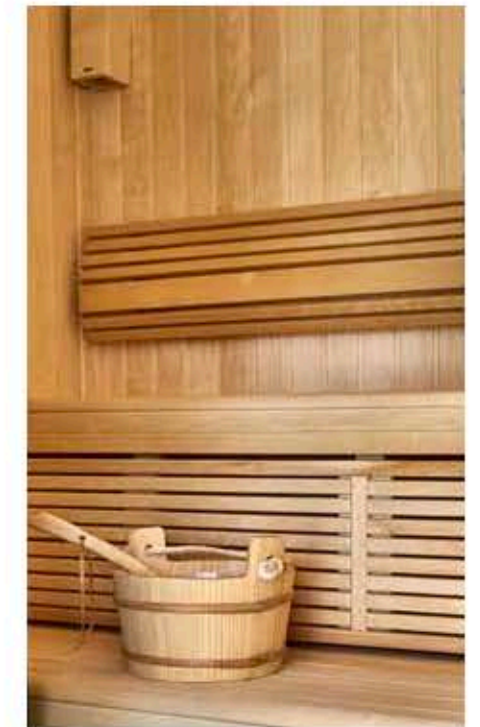
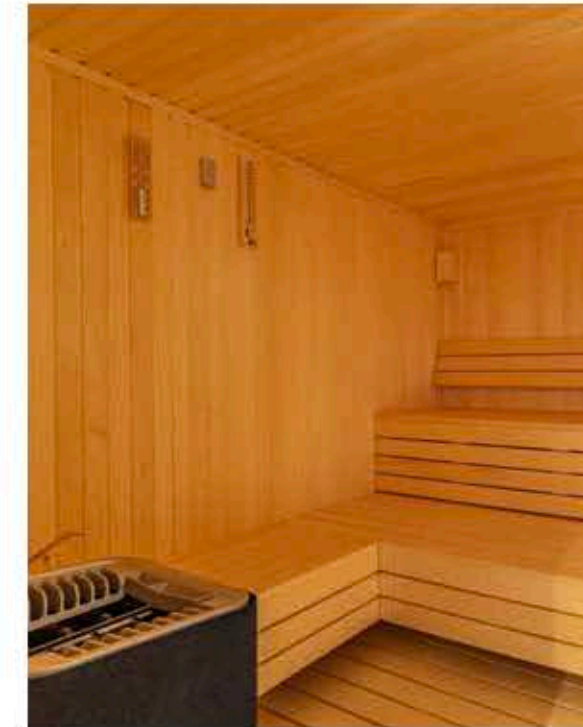
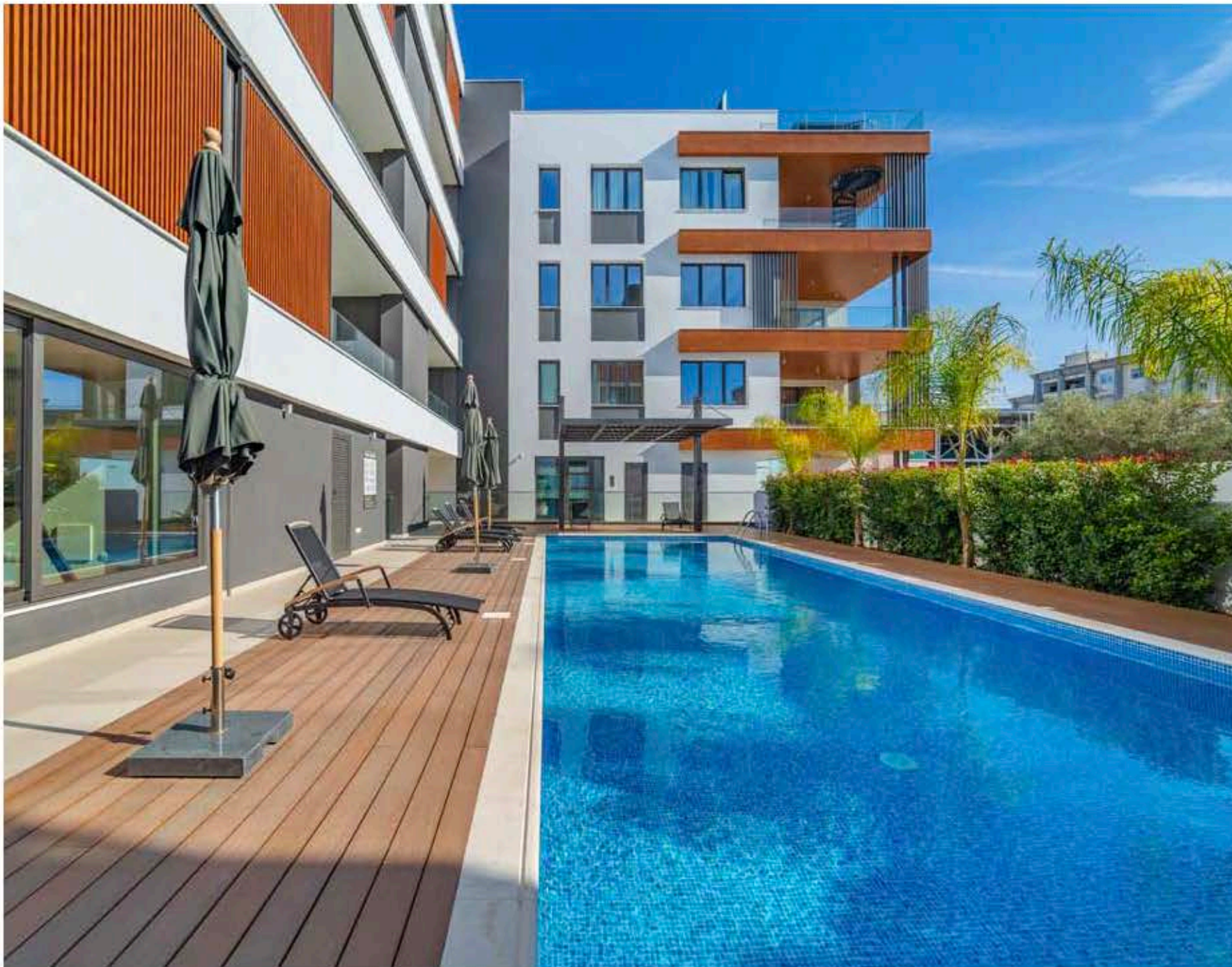
# exterior



\*All 3D images and photographs consist of indicative information and the project can differ insignificantly from the displayed images. Furniture and interior items are extras.

# resident facilities

The building offers outdoor swimming pool, secure covered parking, a fully equipped gym and sauna



\*All 3D images and photographs consist of indicative information and the project can differ insignificantly from the displayed images. Furniture and interior items are extras.

# resident facilities



\*All 3D images and photographs consist of indicative information and the project can differ insignificantly from the displayed images. Furniture and interior items are extras.

# choice of properties

## block a

UNIT NO	PROPERTY TYPE	BED-ROOMS	BATH-ROOMS	PARK SPACES	INDOOR AREA M <sup>2</sup>	COV. VERANDA M <sup>2</sup>	AUXILIARY AREA M <sup>2</sup>	PRIVATE SWIMMING POOL	ROOF TERRACE M <sup>2</sup>	PLANTER AREA M <sup>2</sup>	STORAGE M <sup>2</sup>	COMMON AREA PER UNIT M <sup>2</sup>	TOTAL AREA M <sup>2</sup>	
101	Apartment	4	3	1	150.00	39.00					4.05	36.62	<b>229.67</b>	
102	Apartment	2	2	1	85.00	34.50					4.05	23.15	<b>146.70</b>	
103	Apartment	2	2	1	93.00	27.50					4.05	23.35	<b>147.90</b>	
104	Apartment	2	2	1	92.00	16.00					4.20	20.92	<b>133.12</b>	
105	Apartment	1	1	1	57.00	12.00					4.20	13.37	<b>86.57</b>	
201	Apartment	3	2	1	122.00	31.50					4.20	29.74	<b>187.44</b>	
202	Apartment	2	2	1	85.50	34.50					5.41	23.25	<b>148.66</b>	
203	Apartment	2	2	1	93.00	27.50					4.75	23.35	<b>148.60</b>	
204	Apartment	2	2	1	92.00	16.00					4.75	20.92	<b>133.67</b>	
205	Apartment	1	1	1	57.00	12.00					3.86	13.37	<b>86.23</b>	
301	Apartment	4	3	1	150.00	39.00					3.86	36.62	<b>229.48</b>	
302	Apartment	2	2	1	85.00	34.50					3.82	23.15	<b>146.47</b>	
303	Apartment	2	2	1	93.00	27.50					4.03	23.35	<b>147.88</b>	
304	Apartment	2	2	1	92.00	16.00					4.03	20.92	<b>132.95</b>	
305	Apartment	1	1	1	57.00	12.00					3.13	13.37	<b>85.50</b>	
401	Apartment	4	3	1	150.00	39.00					3.13	36.62	<b>228.75</b>	
402	Apartment	2	2	1	85.00	34.50					3.13	23.15	<b>145.78</b>	
403	Apartment	2	2	1	93.00	27.50					3.19	23.35	<b>147.04</b>	
404	Apartment	2	2	1	92.00	16.00					3.19	20.92	<b>132.11</b>	
405	Apartment	1	1	1	57.00	12.00					3.94	13.37	<b>86.31</b>	
501	Apartment	3	2	2	122.00	31.50					3.58	29.74	<b>186.82</b>	
502	Apartment	2	2	1	85.50	34.50					5.36	23.25	<b>148.61</b>	
503	Penthouse	3	3	2	117.00	30.00	6th	10.50	YES	70.20	1.51	4.20	30.51	<b>263.92</b>
504	Penthouse	3	3	2	132.00	23.00	6th	10.50	YES	56.27	1.51	4.20	32.06	<b>259.54</b>
601	Penthouse	3	4	2	302.50	90.50					11.25	101.23	<b>826.98</b>	
601	Penthouse		2			7.50	7th	122.00	YES	192.00				

NOTE: the areas stated above may slightly differ upon issuance of relevant authority permits

## block b

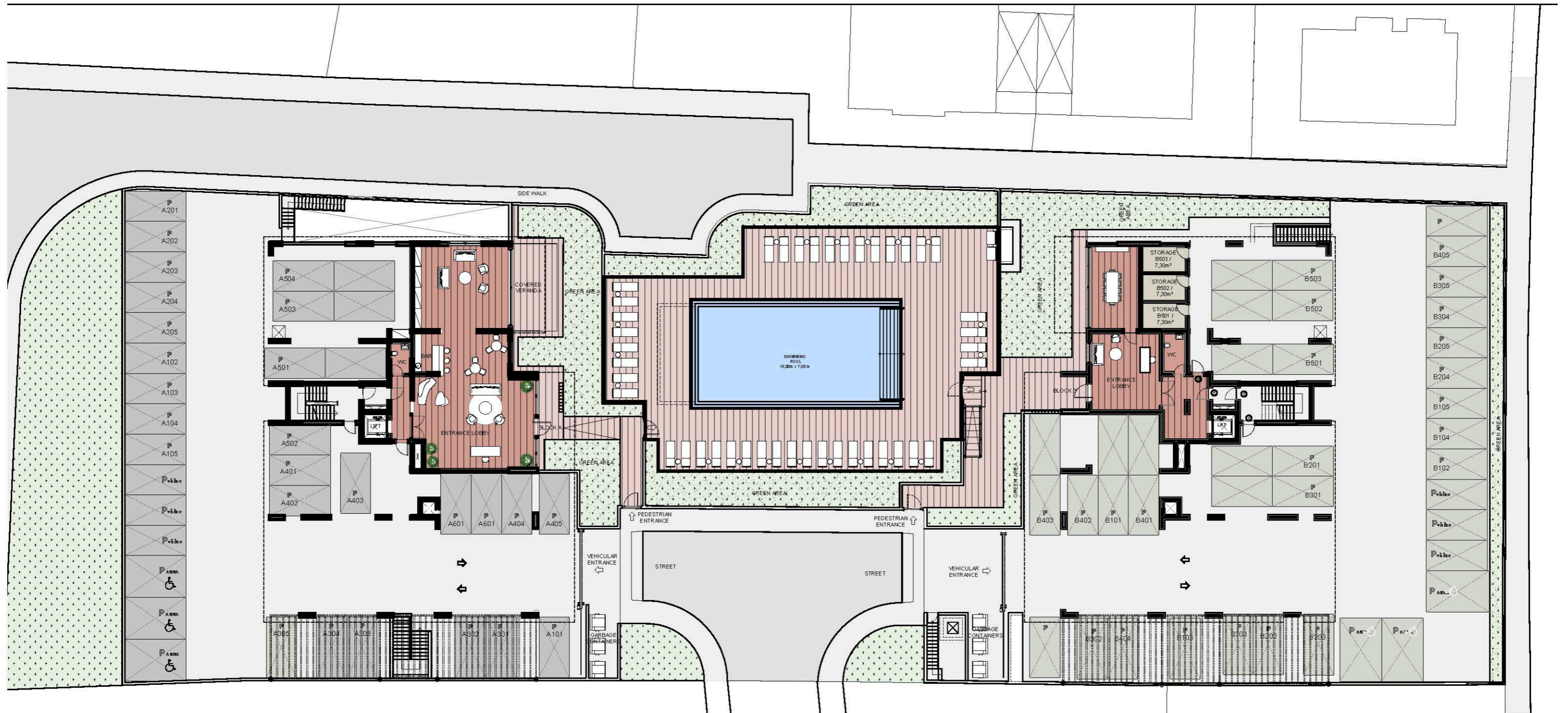
UNIT NO	PROPERTY TYPE	BED-ROOMS	BATH-ROOMS	PARK SPACES	INDOOR AREA M <sup>2</sup>	COV. VERANDA M <sup>2</sup>	AUXILIARY AREA M <sup>2</sup>	PRIVATE SWIMMING POOL	UNCOVERED VERANDA M <sup>2</sup>	STORAGE M <sup>2</sup>	COMMON AREA PER UNIT M <sup>2</sup>	TOTAL AREA M <sup>2</sup>	
101	Apartment	4	3	2	150.00	41.00				4.20	23.77	<b>218.97</b>	
102	Apartment	2	2	1	87.00	35.00				4.05	15.19	<b>141.24</b>	
103	Apartment	2	2	1	93.00	29.00				4.05	15.19	<b>141.24</b>	
104	Apartment	2	2	1	90.00	18.00				4.00	13.44	<b>125.44</b>	
105	Apartment	1	1	1	57.00	12.00				3.19	8.59	<b>80.78</b>	
201	Apartment	3	2	2	118.00	35.00				3.19	19.04	<b>175.23</b>	
202	Apartment	2	2	1	87.00	35.00				3.71	15.19	<b>140.90</b>	
203	Apartment	2	2	1	93.00	29.00				3.51	15.19	<b>140.70</b>	
204	Apartment	2	2	1	90.00	18.00				3.51	13.44	<b>124.95</b>	
205	Apartment	1	1	1	57.00	12.00				3.51	8.59	<b>81.10</b>	
301	Apartment	4	3	2	150.00	41.00				3.84	23.77	<b>218.61</b>	
302	Apartment	2	2	1	87.00	35.00				2.93	15.19	<b>140.12</b>	
303	Apartment	2	2	1	93.00	29.00				2.93	15.19	<b>140.12</b>	
304	Apartment	2	2	1	90.00	18.00				2.93	13.44	<b>124.37</b>	
305	Apartment	1	1	1	57.00	12.00				3.40	8.59	<b>80.99</b>	
401	Apartment	4	3	2	150.00	41.00				4.44	23.77	<b>219.21</b>	
402	Apartment	2	2	1	87.00	35.00				3.45	15.19	<b>140.64</b>	
403	Apartment	2	2	2	93.00	29.00				2.93	15.19	<b>140.12</b>	
404	Apartment	2	2	1	90.00	18.00				3.67	13.44	<b>125.11</b>	
405	Apartment	1	1	1	57.00	12.00				5.41	8.59	<b>83.00</b>	
501	Penthouse	2	4	2	122.00	31.50	6th	45.00	YES	55.17	7.30	24.71	<b>285.68</b>
502	Penthouse	2	4	2	116.00	47.00	6th	41.00	YES	154.52	7.30	25.39	<b>391.21</b>
503	Penthouse	2	3	2	123.00	91.50	5th	56.00	YES	79.01	7.30	39.52	<b>443.33</b>
							6th	47.00					

NOTE: the areas stated above may slightly differ upon issuance of relevant authority permits

# master plan

block a

block b



\*Floor plans show approximate measurements only. The exact layout and sizes may vary

# master plan

block a

block b



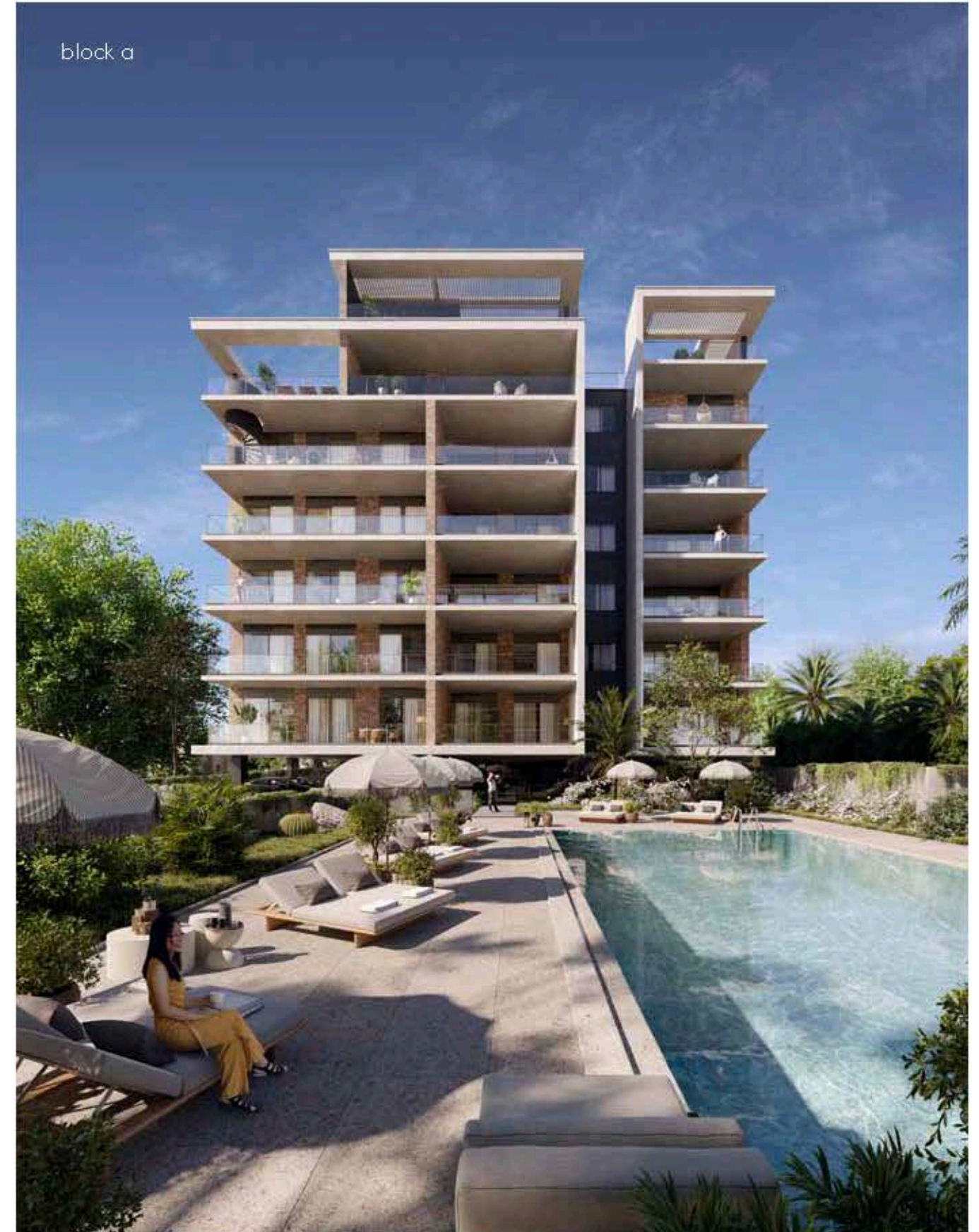
# floor plans block a



ground floor



\*Floor plans show approximate measurements only. The exact layout and sizes may vary



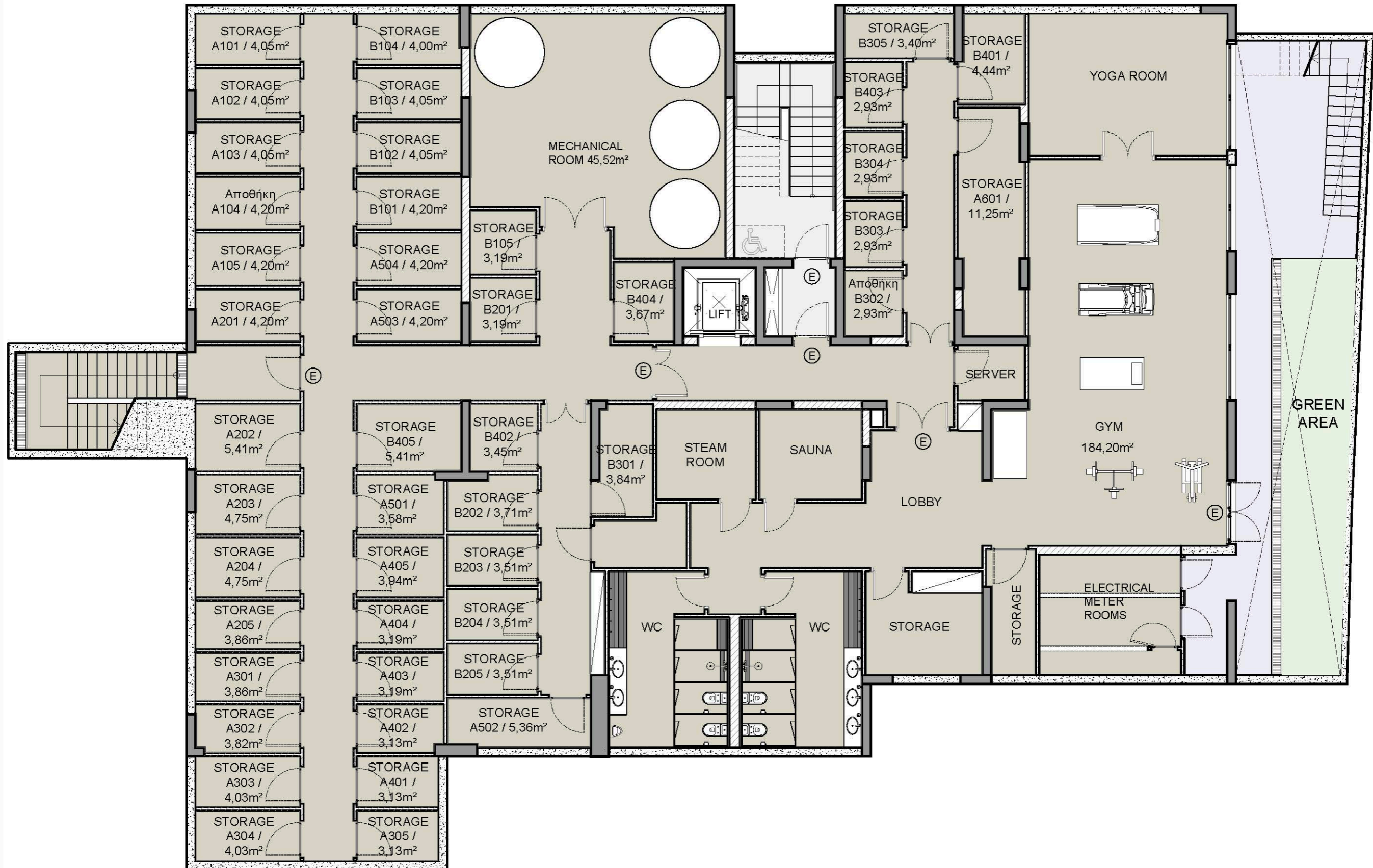
\*All 3D images and photographs consist of indicative information and the project can differ insignificantly from the displayed images. Furniture and interior items are extras.



# floor plans block a



## basement

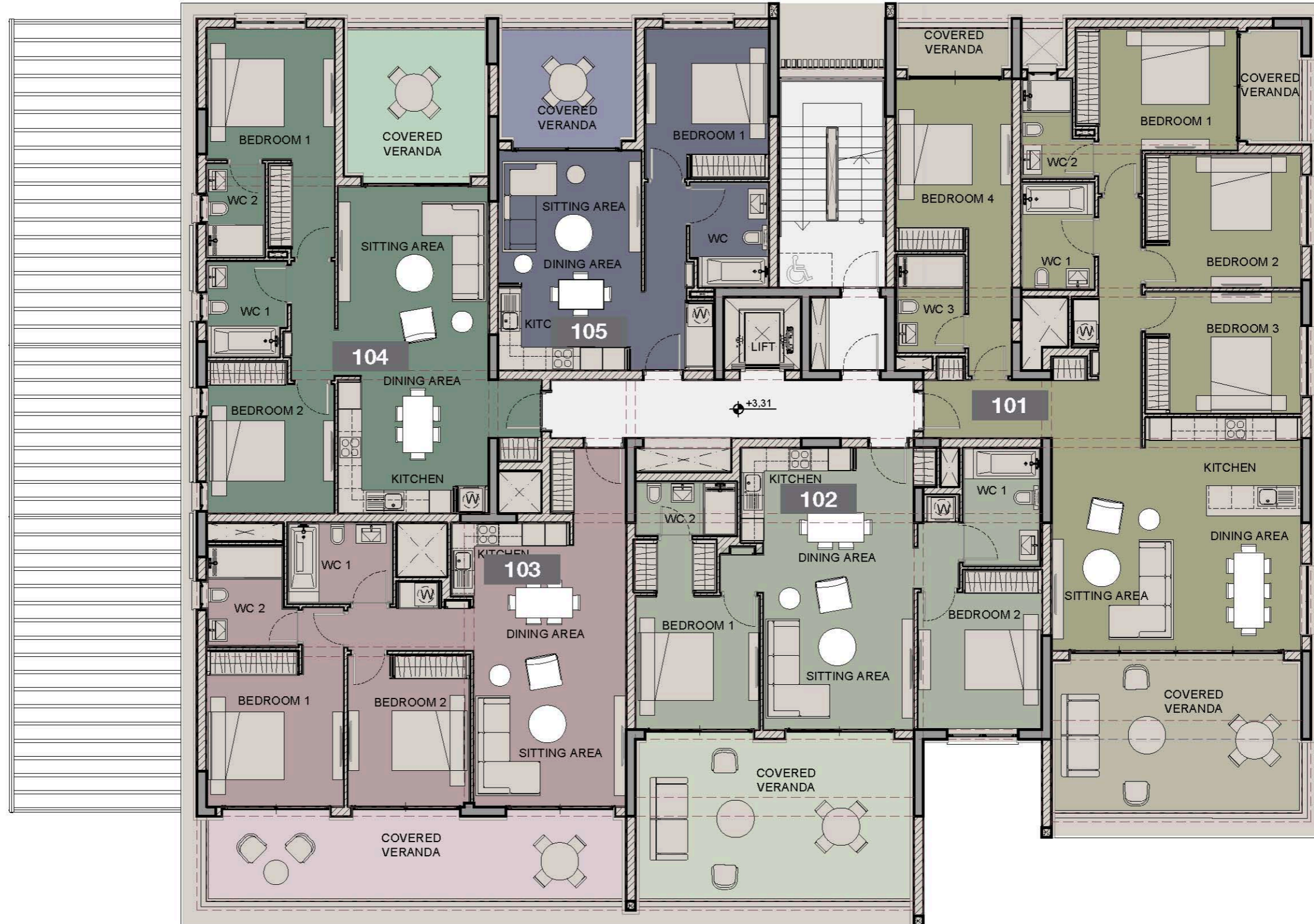


\*Floor plans show approximate measurements only. The exact layout and sizes may vary

# floor plans block a



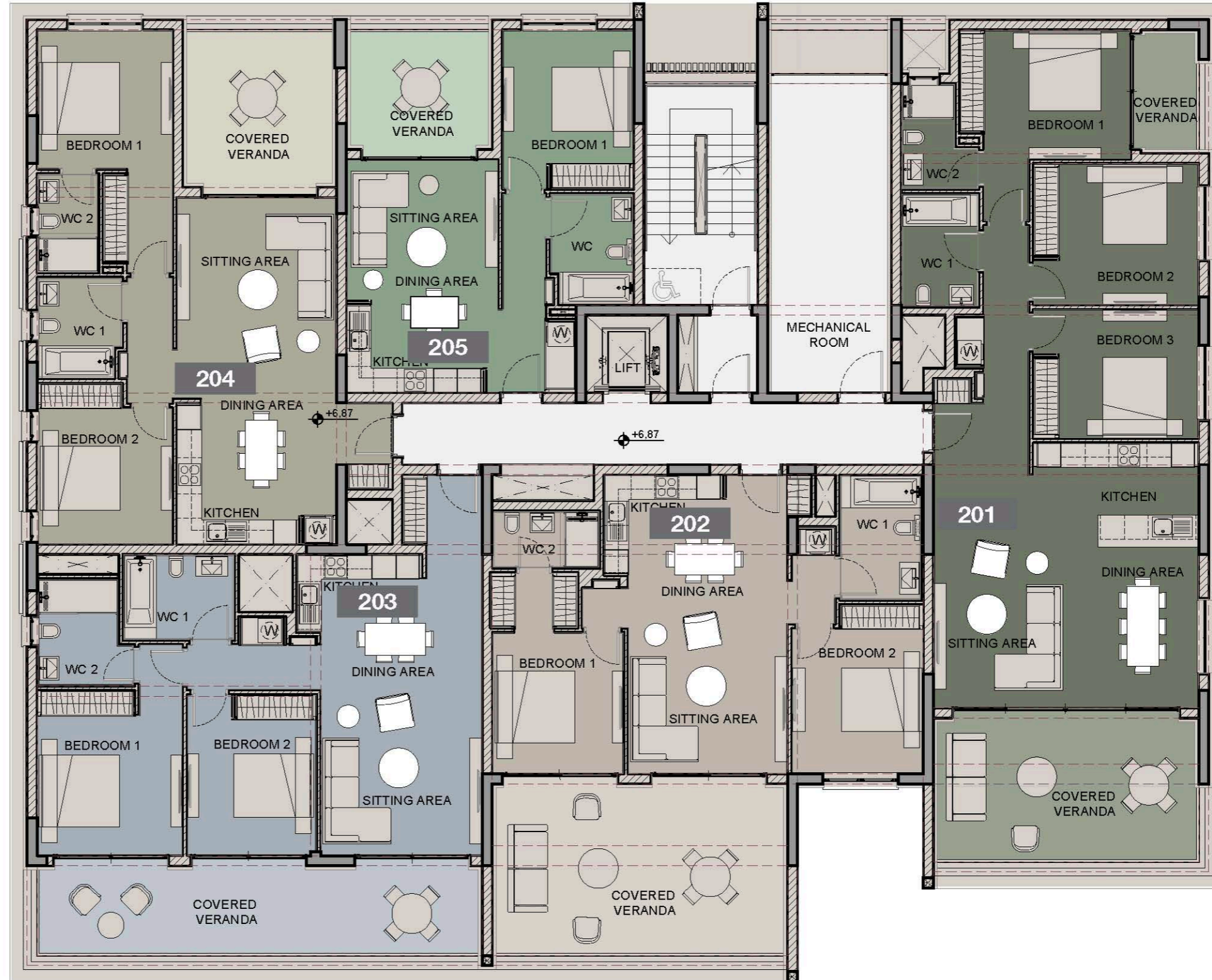
## 1st Floor



# floor plans block a



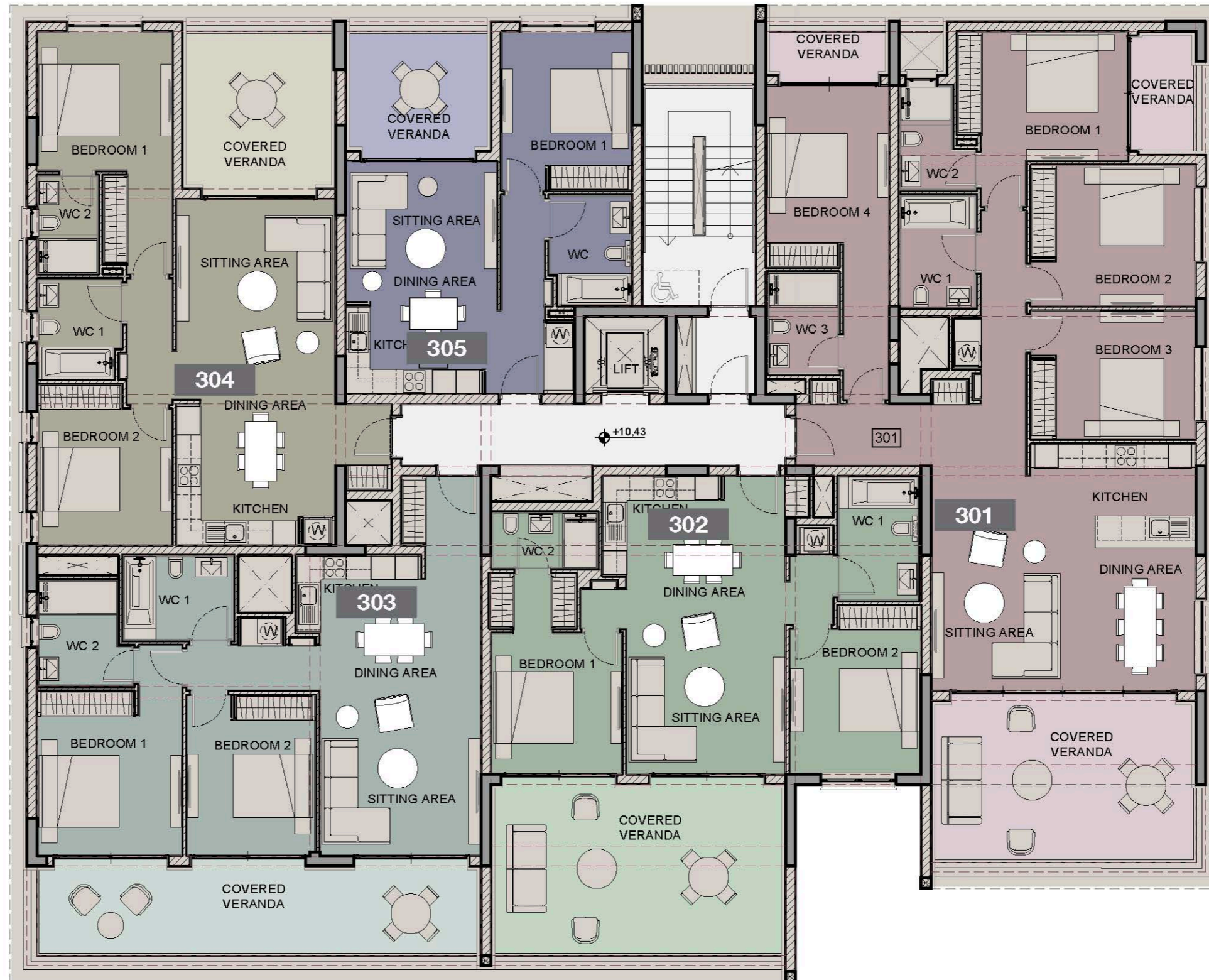
## 2nd Floor



# floor plans block a



## 3rd Floor

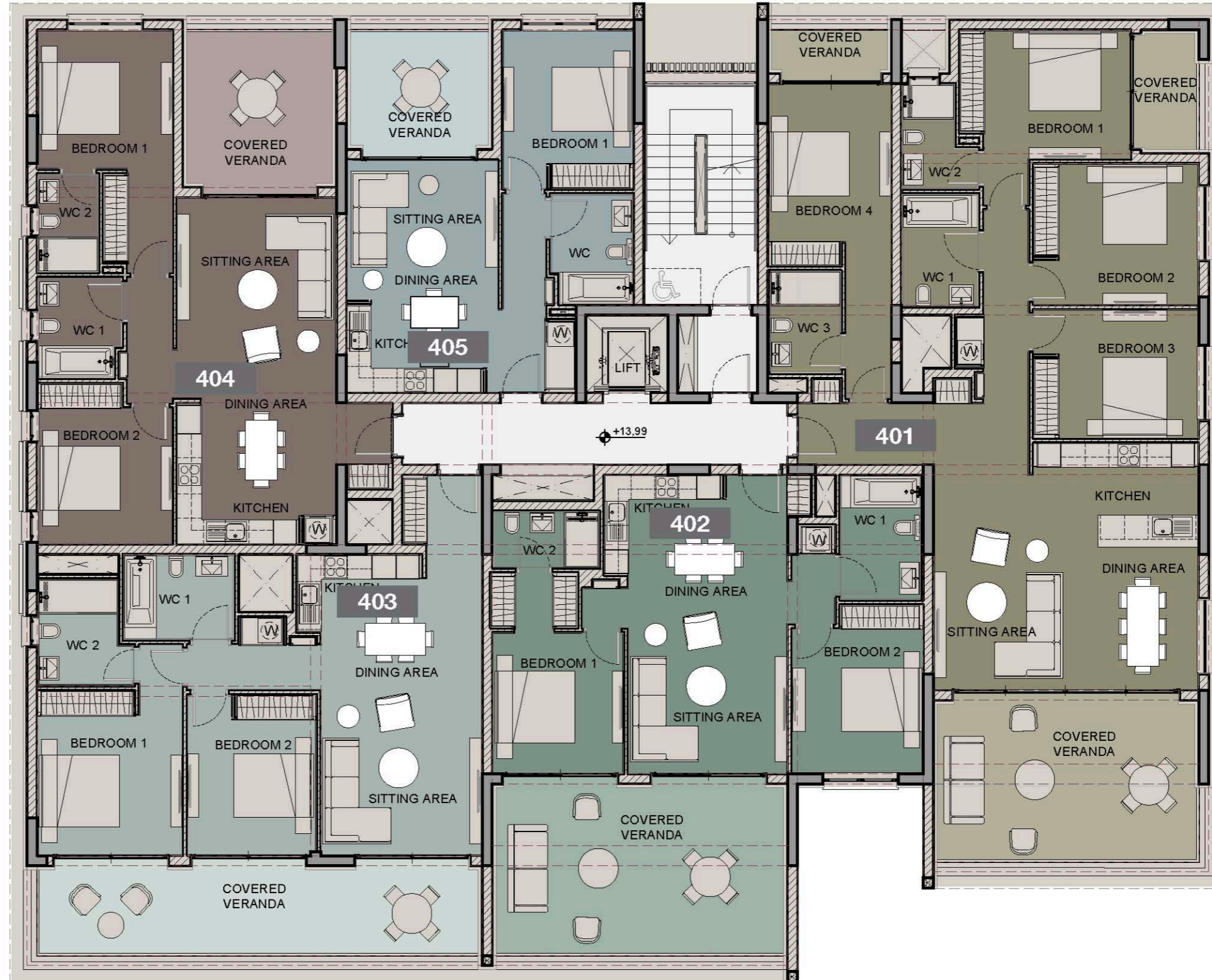


\*Floor plans show approximate measurements only. The exact layout and sizes may vary

# floor plans block a



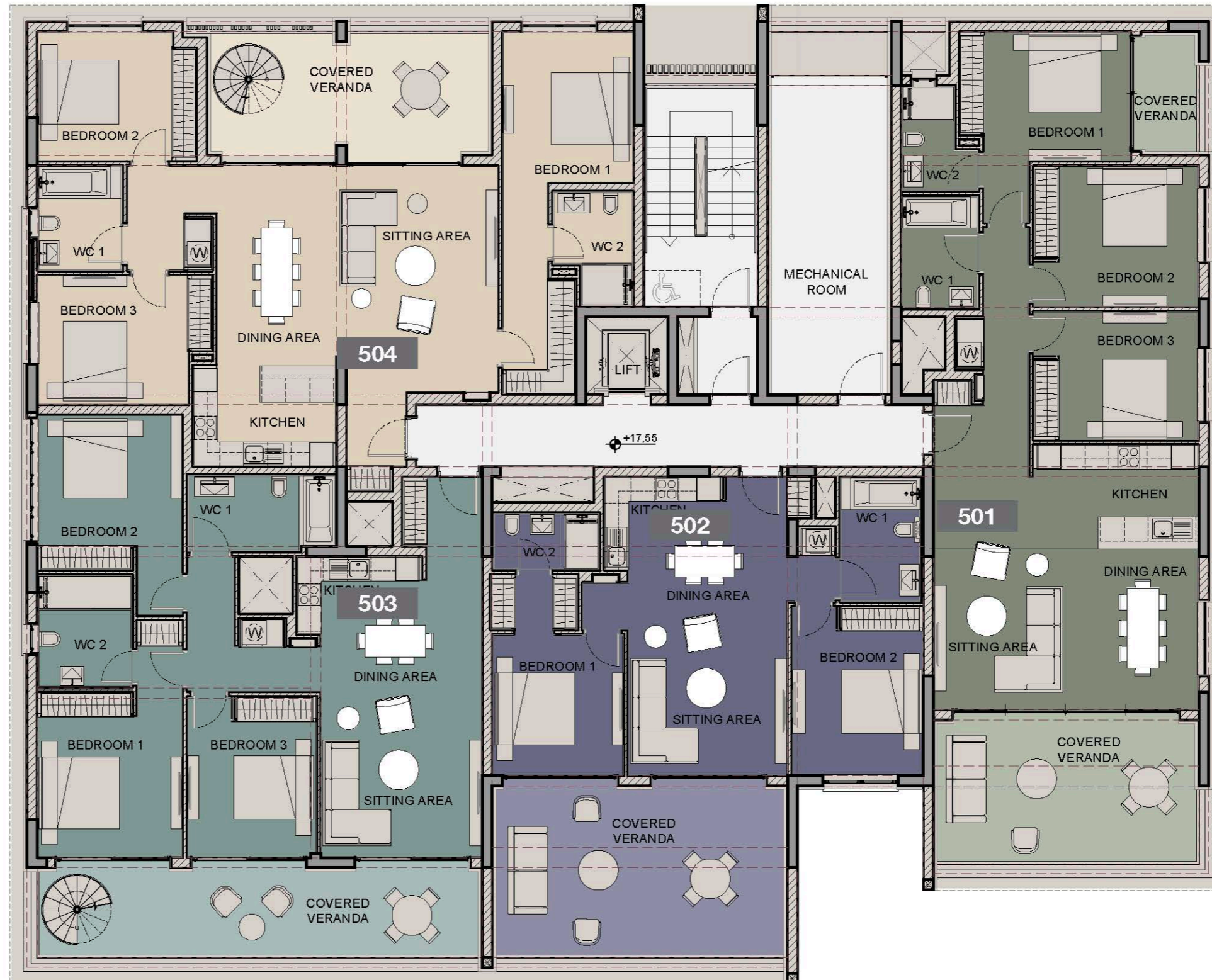
## 4th Floor



# floor plans block a



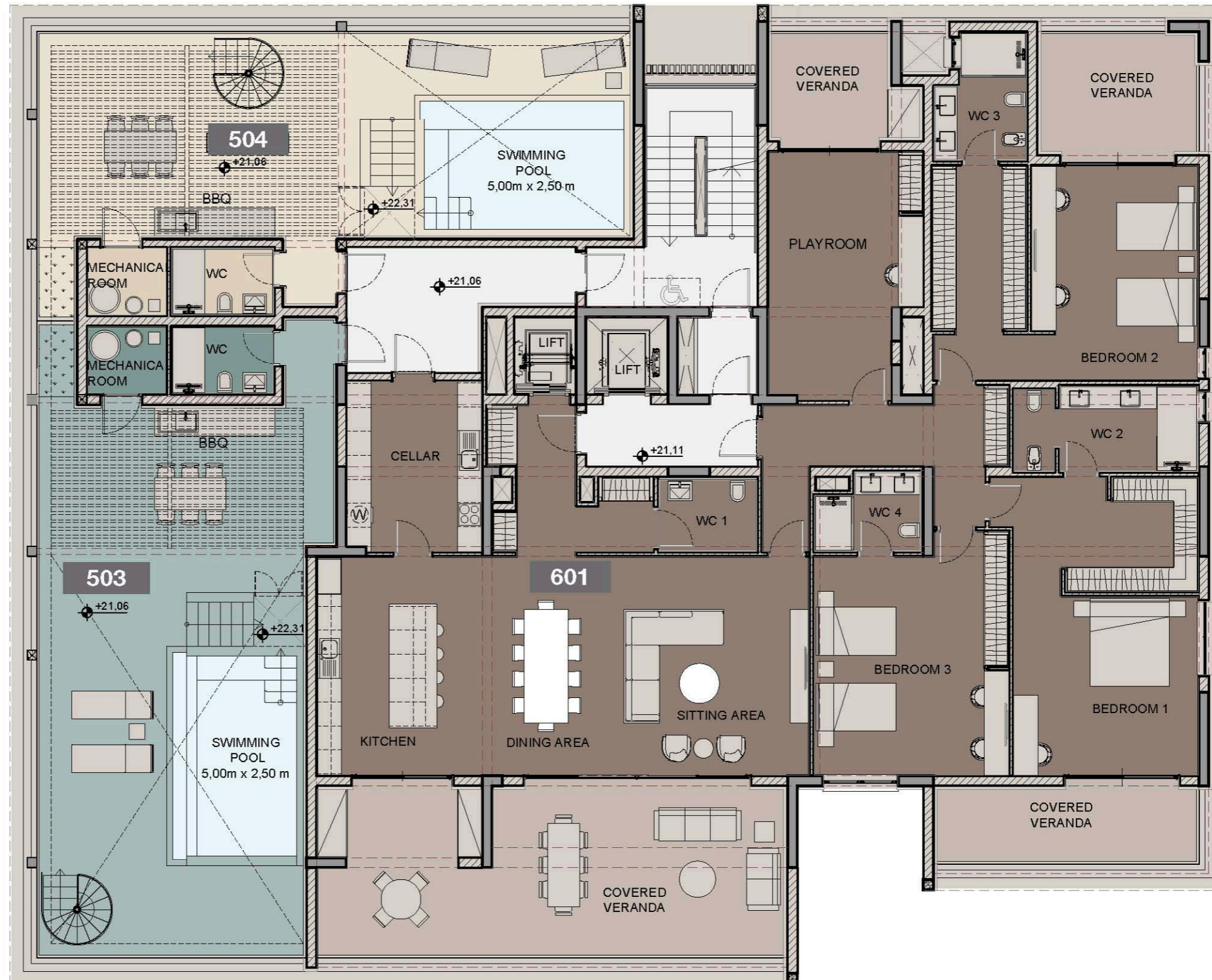
## 5th Floor



# floor plans block a



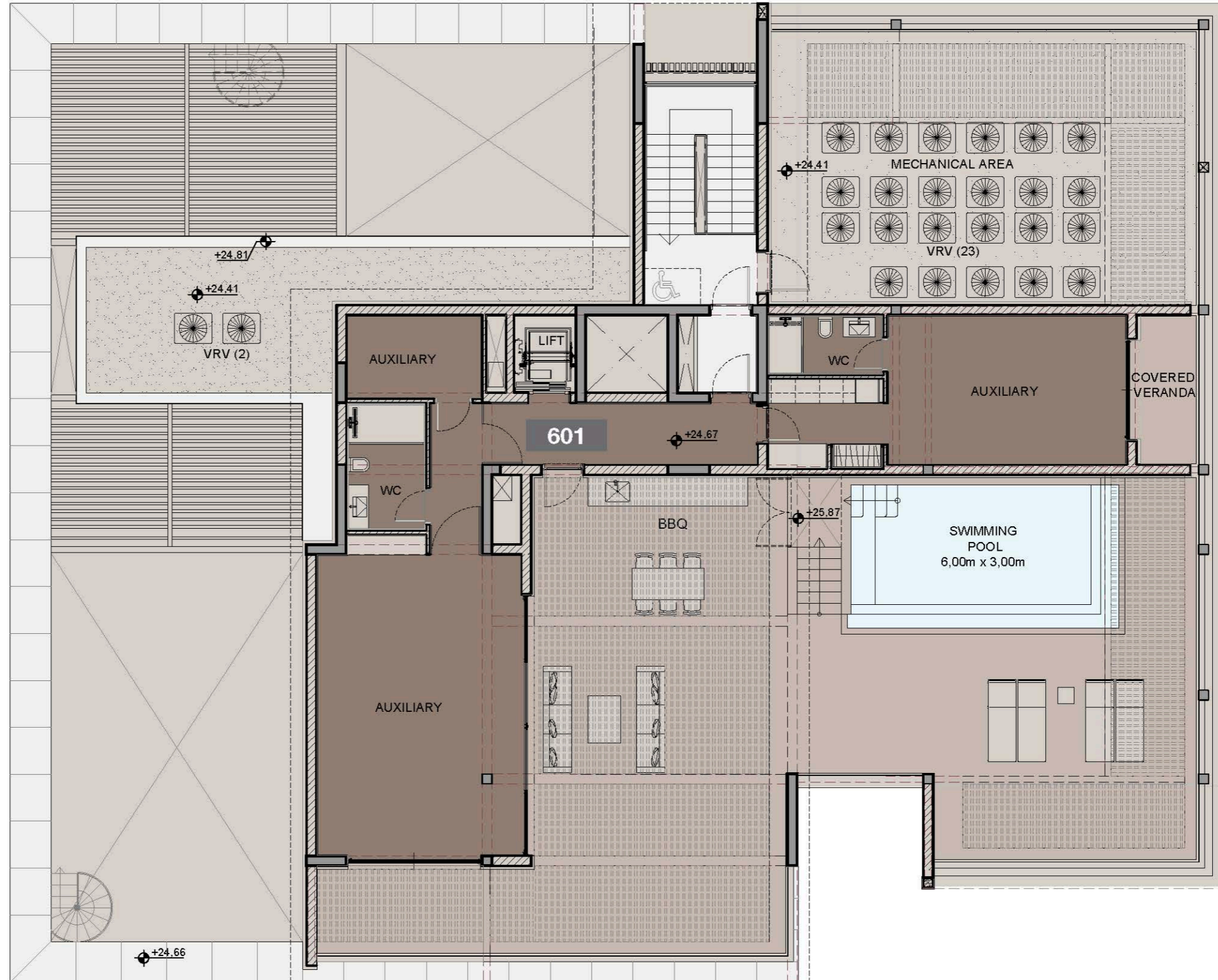
## 6th Floor



# floor plans block a



## 7th Floor



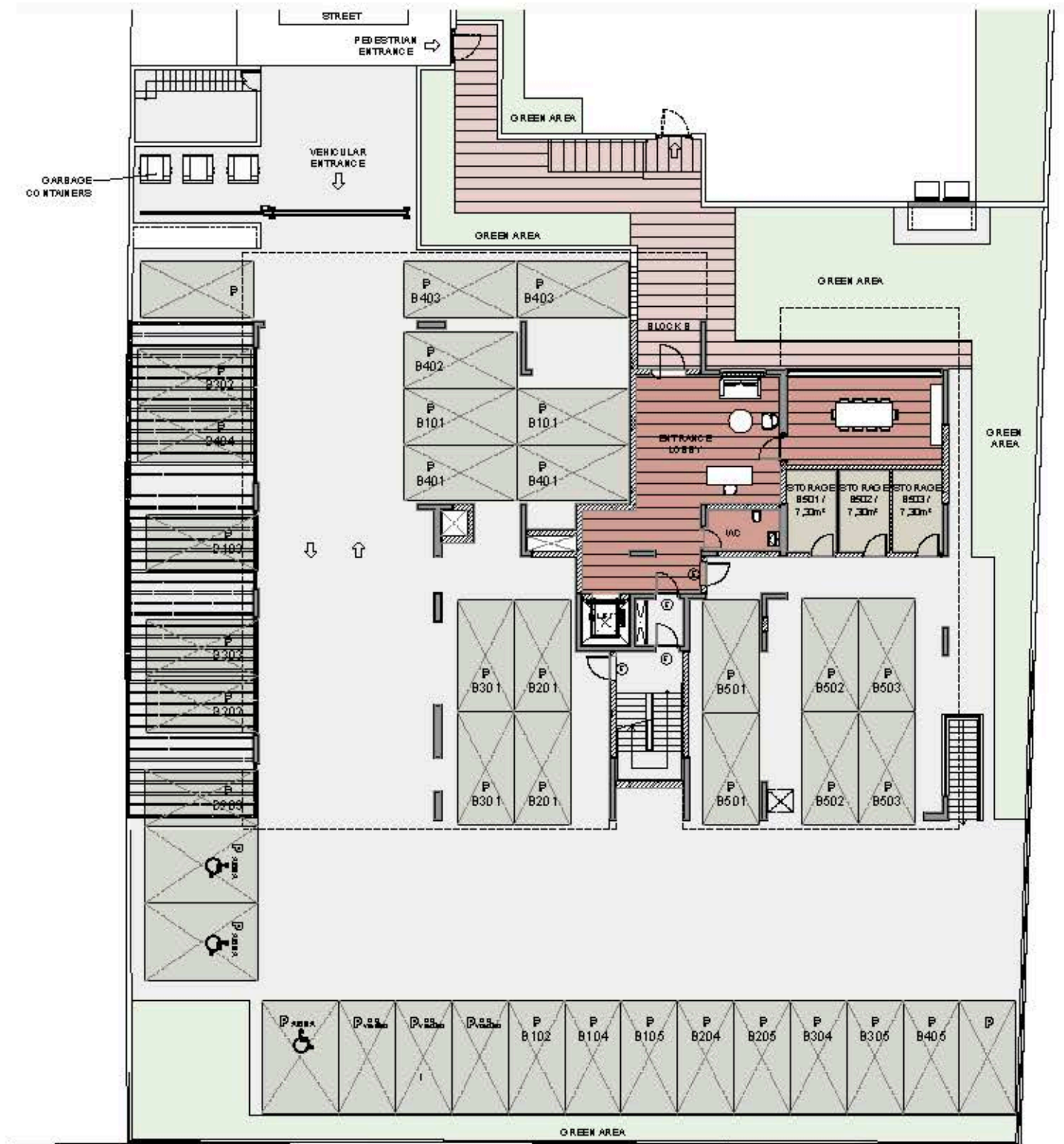
\*Floor plans show approximate measurements only. The exact layout and sizes may vary



# floor plans block b



## ground floor



\*Floor plans show approximate measurements only. The exact layout and sizes may vary

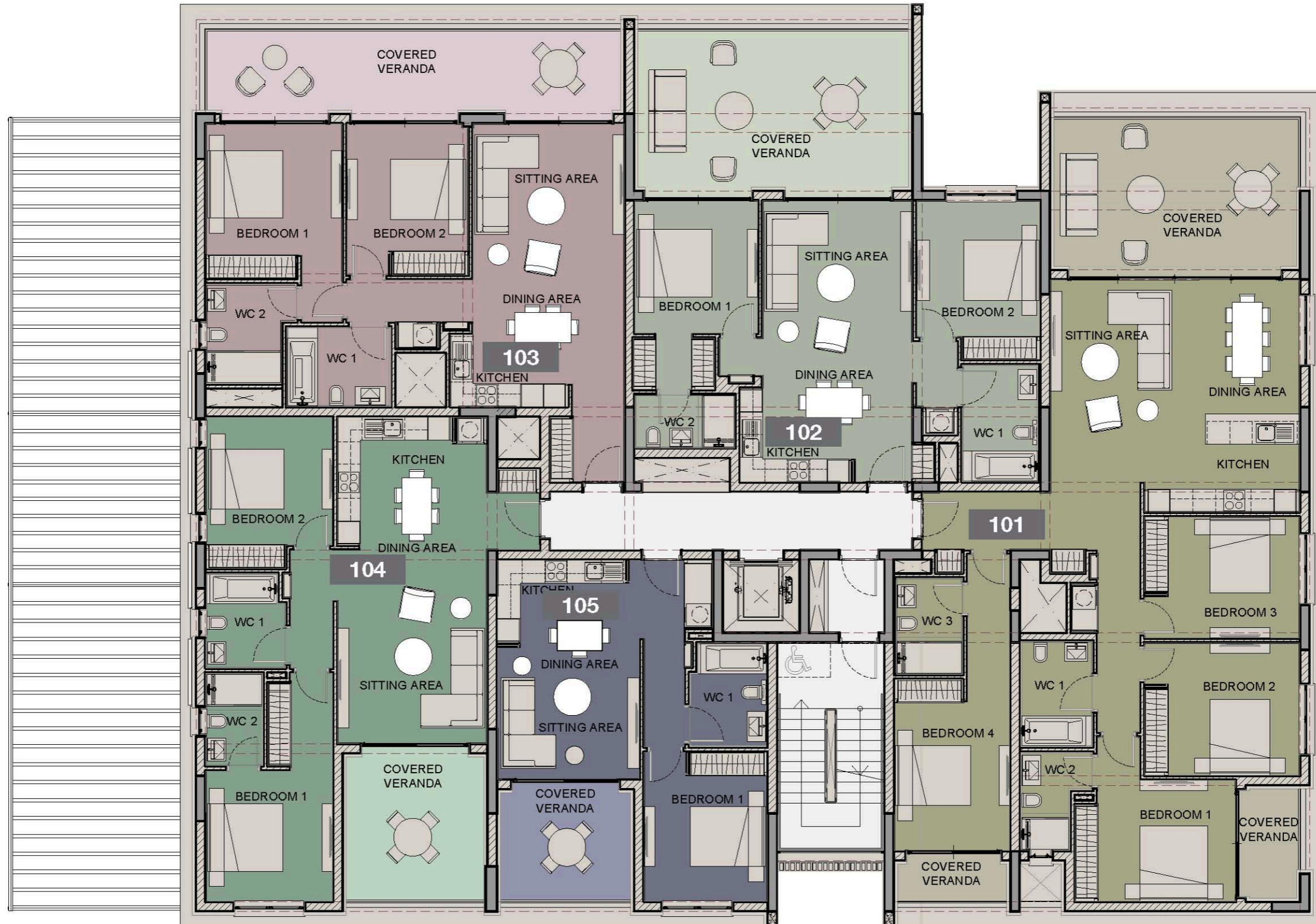


\*All 3D images and photographs consist of indicative information and the project can differ insignificantly from the displayed images. Furniture and interior items are extras.

# floor plans block b



## 1st Floor



\*Floor plans show approximate measurements only. The exact layout and sizes may vary

# floor plans block b



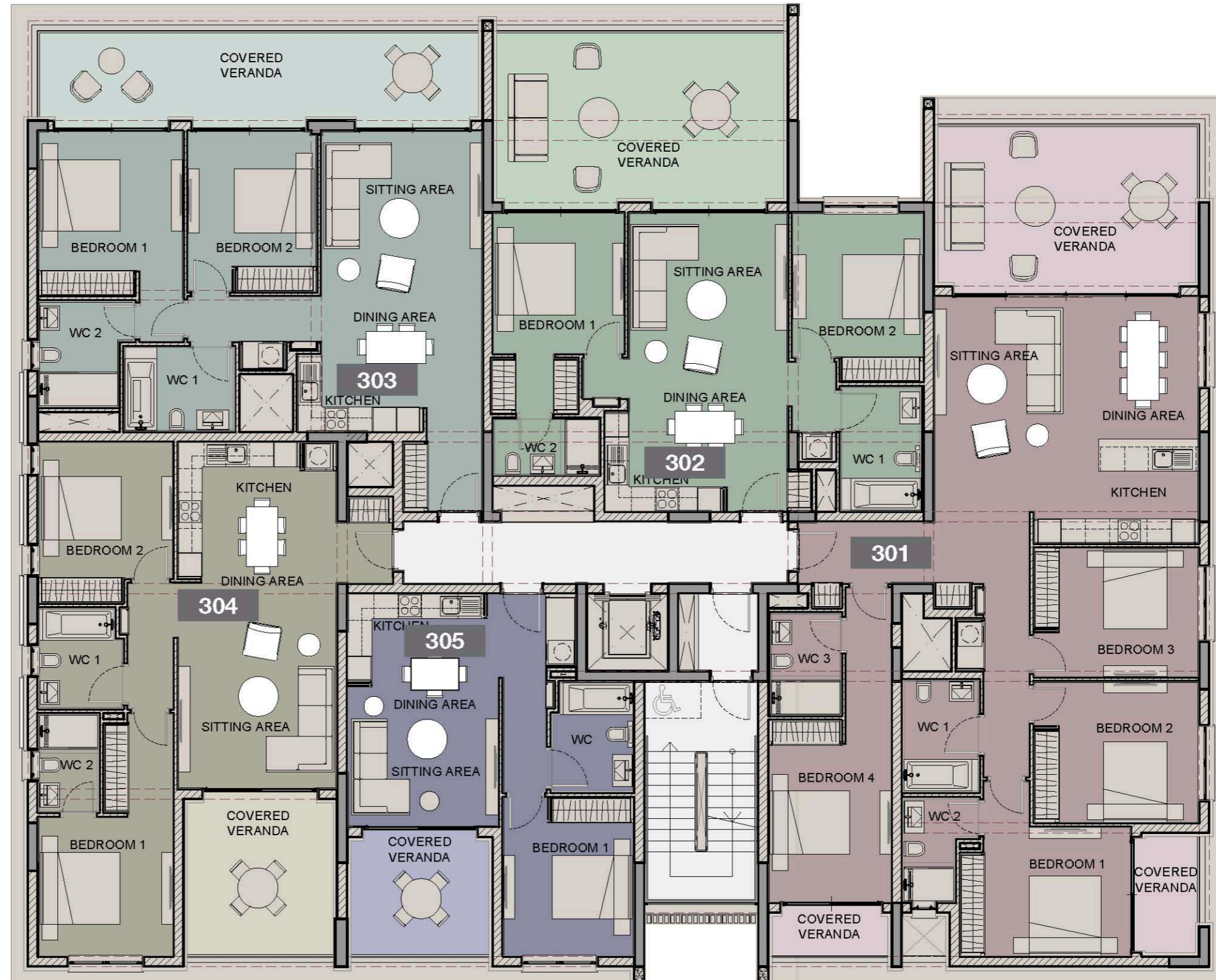
## 2nd Floor



# floor plans block b



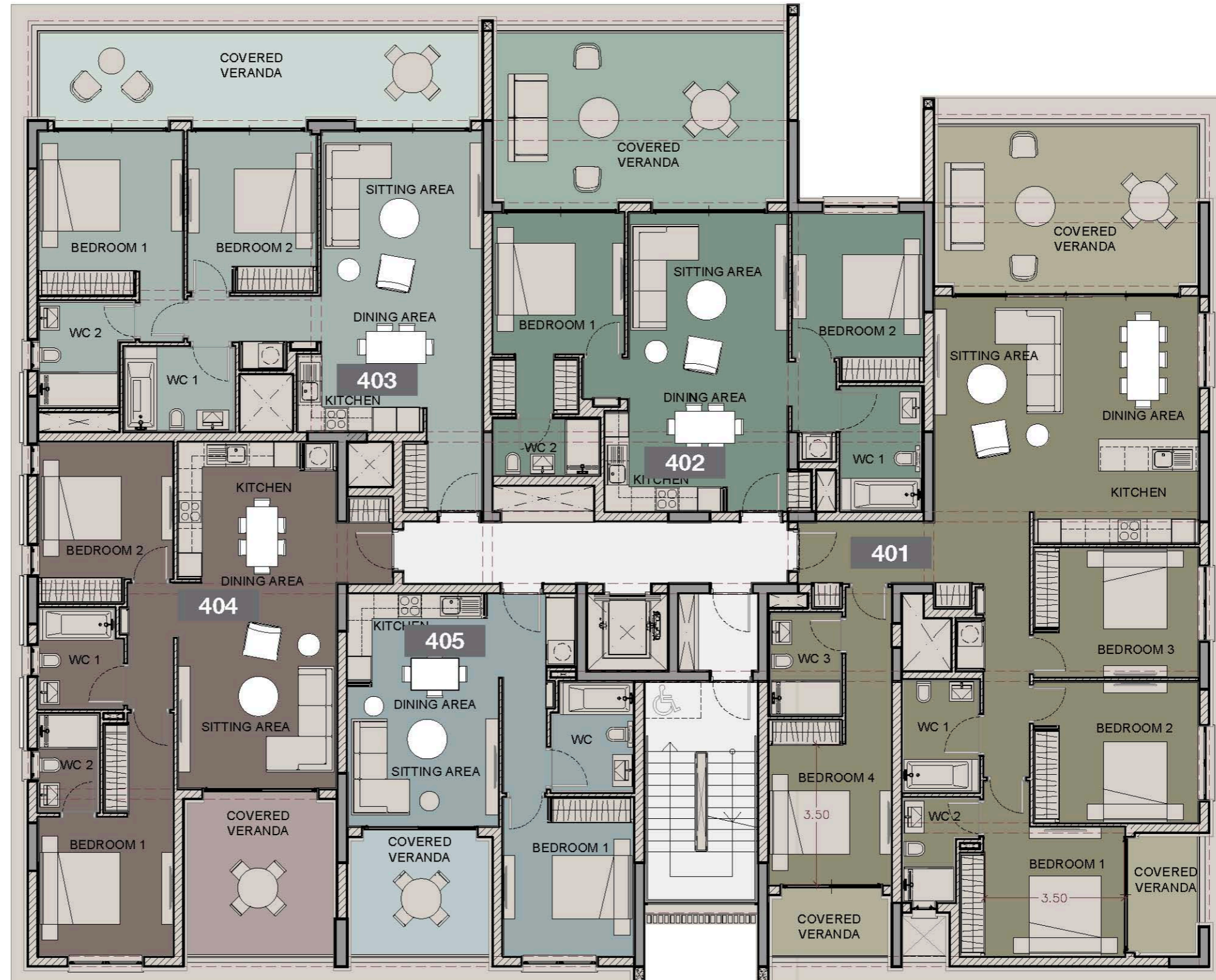
## 3rd Floor



# floor plans block b



## 4th Floor



# floor plans block b



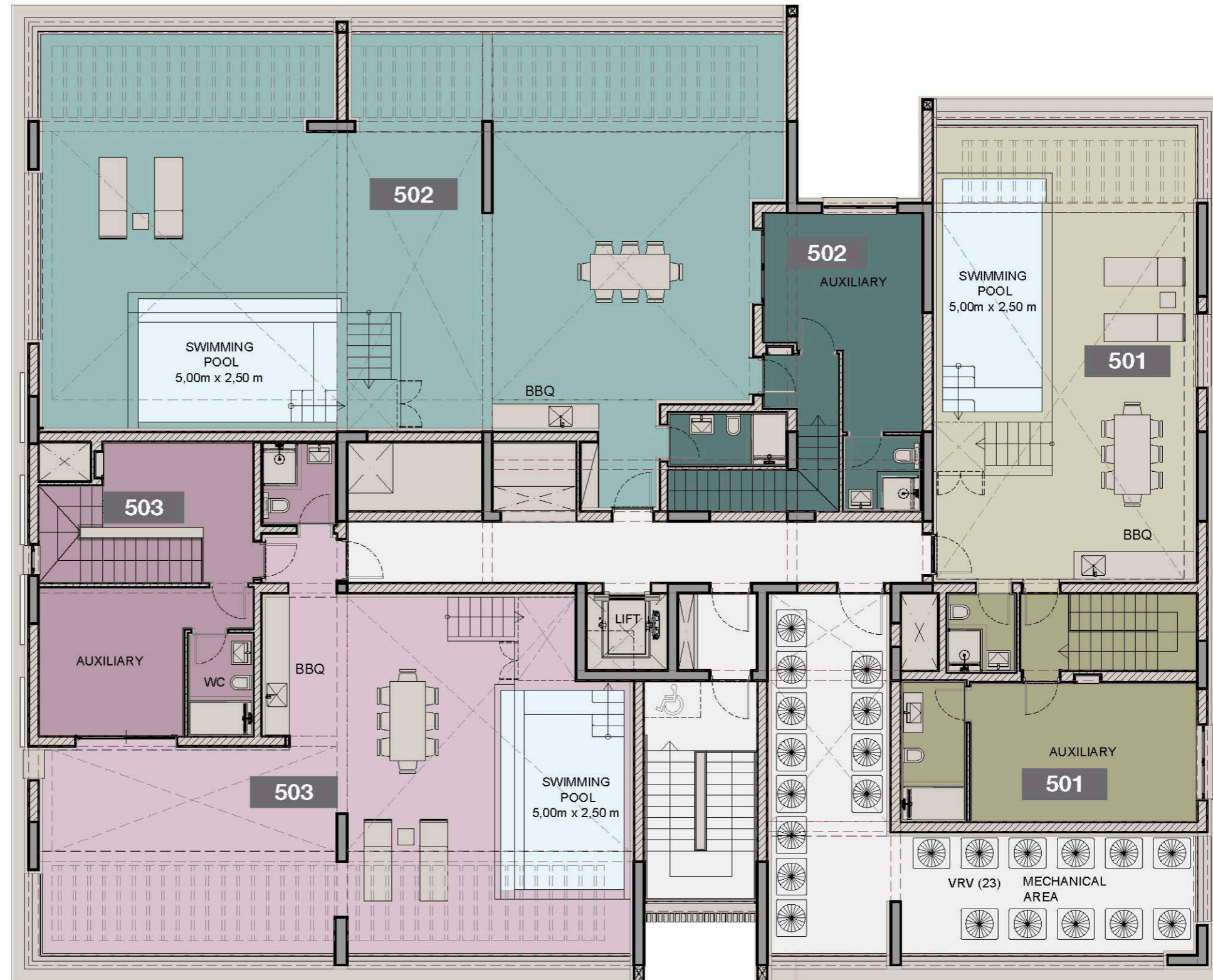
## 5th Floor



# floor plans block b



## 6th Floor





## signature finishes

### EVERY PROPERTY IS DELIVERED WITH SIGNATURE TOP STANDARD FINISHES:

- Fully completed finishings
- Semi-solid parquet floors in each room
- Marble floor and walls in the toilets and bathrooms
- High ceilings (3.15 m)
- Security and fireproof entrance doors
- Water heated floors
- Air conditioning
- High standard sanitary ware from European brands
- Thermal aluminum window frames with double glazing
- High standard kitchen cabinets
- High standard wardrobes from European brands
- Soft closers
- Door stoppers

**NOTE:** movable furniture, home appliances & interior items are extras



\*All 3D images and photographs consist of indicative information and the project can differ insignificantly from the displayed images. Furniture and interior items are extras. The type of materials and colors used in the finishes may vary from the displayed images and text

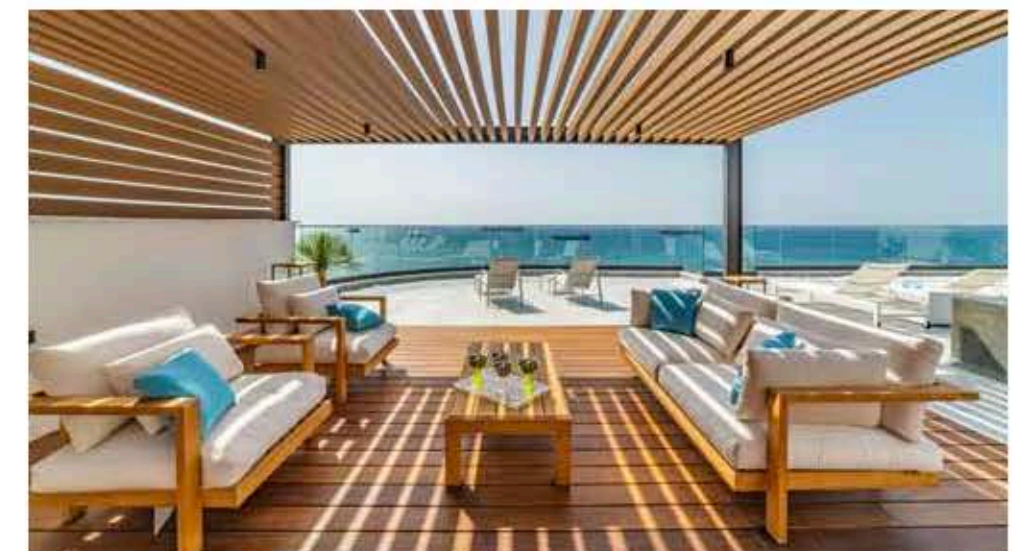


# signature finishes



- Sizable roof space
- Stone floors
- Marble tiled swimming pool with Jacuzzi
- Barbecue
- Pergolas for shading

**NOTE:** movable furniture, home appliances & interior items are extras



\*All 3D images and photographs consist of indicative information and the project can differ insignificantly from the displayed images. Furniture and interior items are extras. The type of materials and colors used in the finishes may vary from the displayed images and text