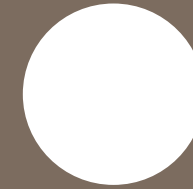




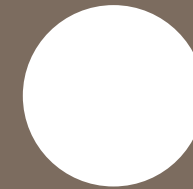
lake view



bbf:



experience a life like no other



lake view

Introducing lake view residence, a refined collection of 1-, 2- and 3- bedroom apartments

This is a place where elegance meets comfort providing a sophisticated home accoutered with those warmly touches and well thought out details. Each residence welcomes you with open plan high quality kitchen layouts, living and dining areas perfectly designed for food preparation and those intimate moments and bathrooms and toilets are complemented with indulgent sanitary ware.



Lake View is a tranquil oasis of calm in a beautiful suburban area of Limassol that boasts breathtaking panoramic views of the sea and your stunning local. The outstanding residence is the perfect illustration of a luxurious contemporary lifestyle that offers flexibility and pure comfort. Complete with all the benefits of a luxury accommodation to curate a unique array of on-site facilities and offer a high degree of style, space and opulence. A boutique residence of luxury and affluence that provides a living experience like no other.



major benefits

- | Breathtaking sea and city panoramas
- | Wide range of different size apartments and penthouses
- | Unique gated compound with indoor facilities: gym, pool and resident roof top terraces
- | New popular suburban neighborhood of Limassol – Polemidia

- | Modern architecture
- | Spacious layouts
- | Provisions for underfloor heating
- | Close driving distance to the famous Heritage School



introduction

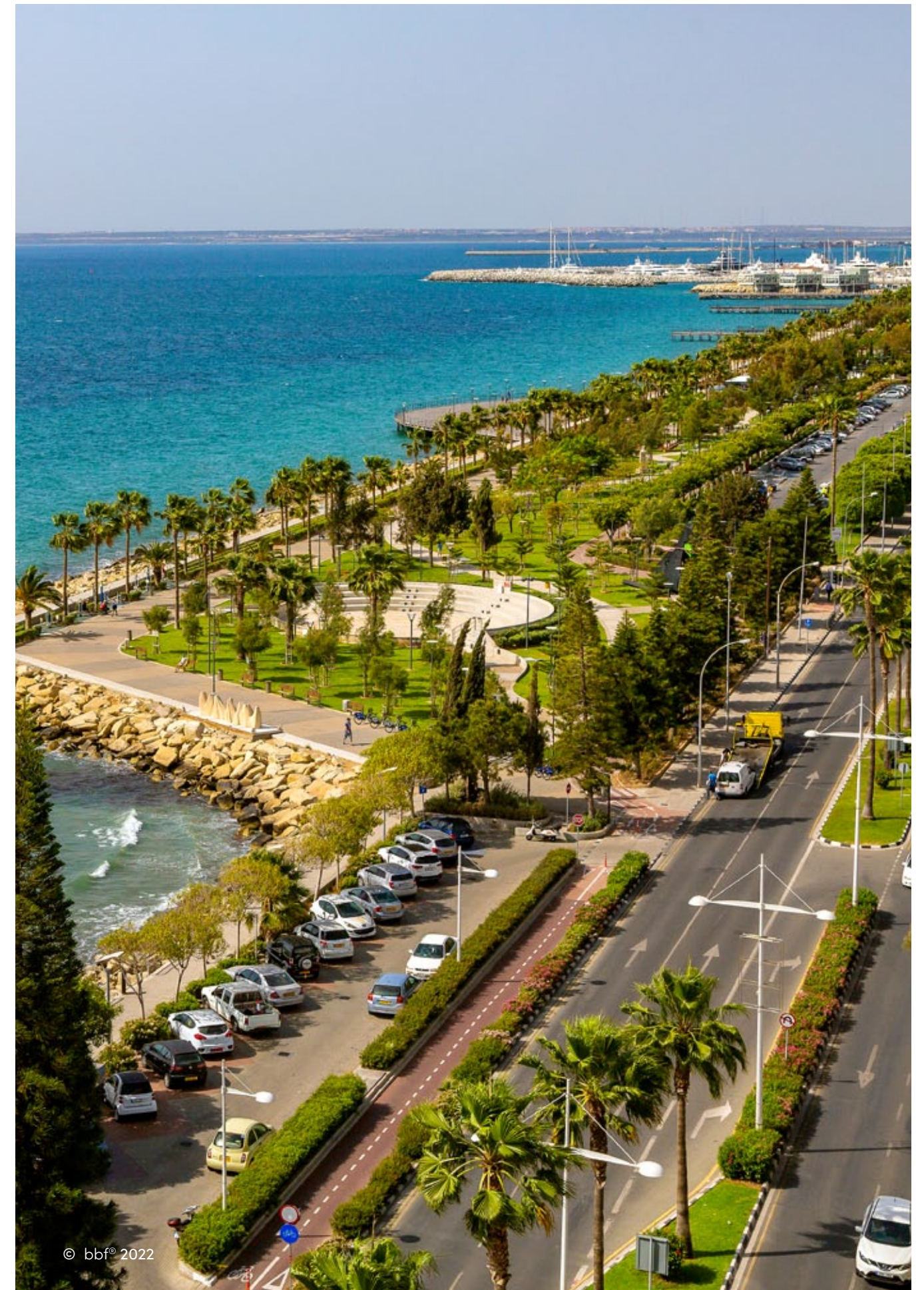
Limassol combines the fast pace of a city and the comfort of a first-class mediterranean resort

Limassol is the second largest urban area in Cyprus, located on the southern coast, with an urban population of 160,000 – 176,700.

Limassol was built between two ancient cities – Amathus and Kourion – and during Byzantine rule it was known as Neapolis (new town). Limassol's historical centre is located around its medieval Limassol Castle and the Old Port. Today the city spreads along the Mediterranean coast and has extended much farther than the castle and port, with its suburbs stretching along the coast to Amathus.

The history of Limassol is largely associated with the Third Crusade of Richard the Lionheart, who arrived in Limassol in 1191 on his way to the Holy Land. He arrested the renegade Byzantine Greek governor of Cyprus Limassol, Isaac Komnenos, taking over the entire island, and bringing the long Byzantine dominion of Cyprus to an end. Richard also celebrated his marriage with Berengaria who had received the crown as queen of England in Limassol. Richard destroyed Amathus and the inhabitants were transferred to Limassol.

Limassol has a Subtropical-Mediterranean climate with warm to hot and dry summers as well as very mild winters, separated by short springs and autumns which are generally pleasant.

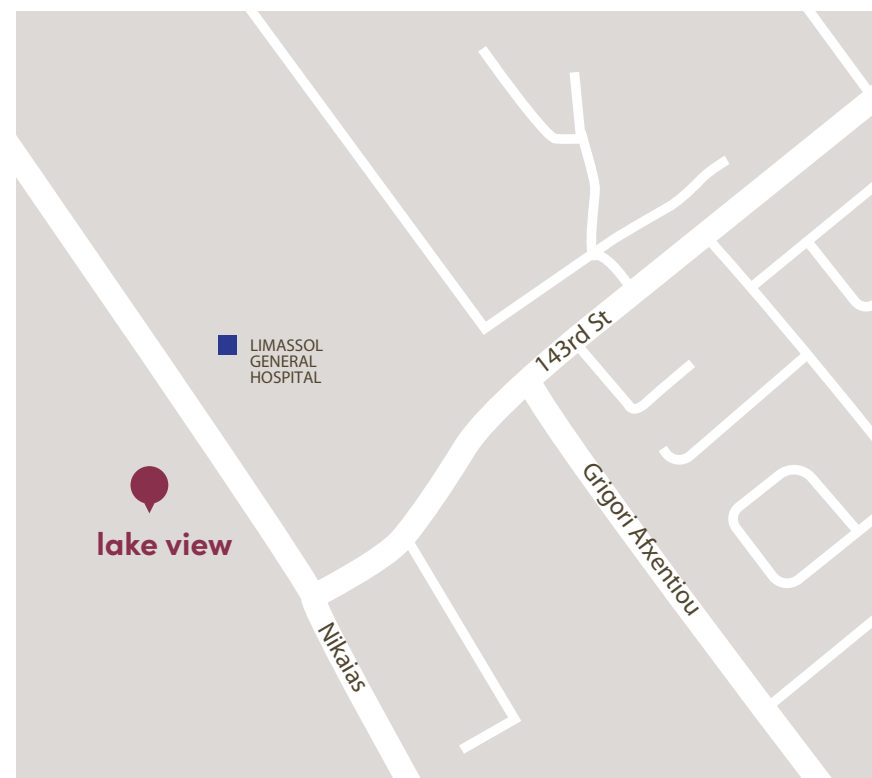


© bbf® 2022

location

Living in Polemidia offers residents a dense suburban feel of freedom, tranquility and privacy with stunning panoramic views of the Mediterranean Sea and the city

Outside of your utopian home, you are glorified with a remarkable location situated in one of the most prudent areas in Limassol, Polemidia. Unequaled proximity to the city centre as well as immediate access to all modern first class infrastructures and facilities. A destination that speaks for itself. It is only a 10 minute drive from Polemidia to the city centre and through to the buzzing business hub of Limassol. Continue a few kilometers to the charming sea front and Limassol Marina with its waterfront high end restaurants and picturesque blue waters, perfect for a leisurely stroll.



• exterior



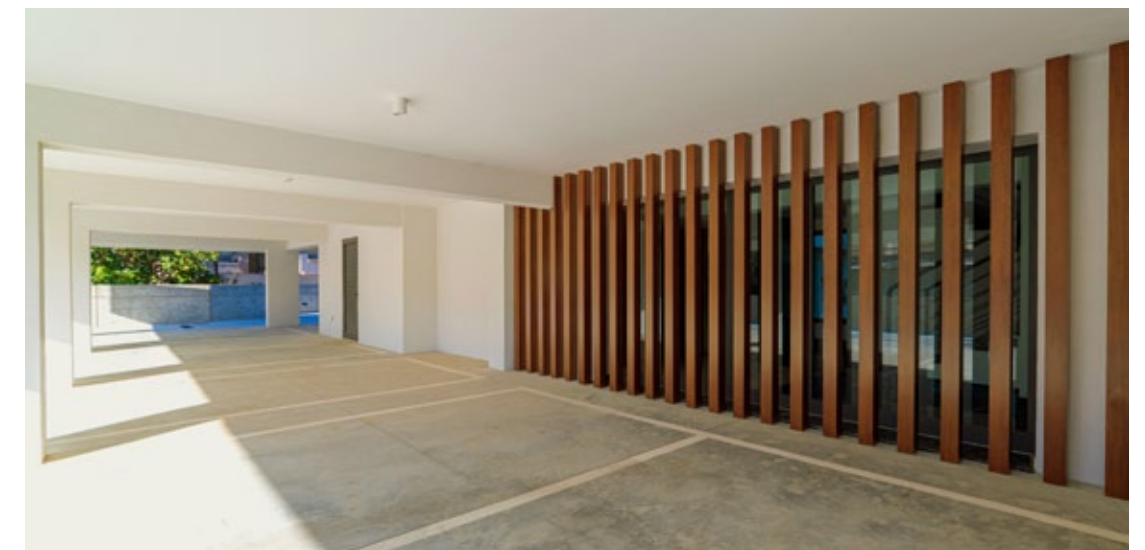
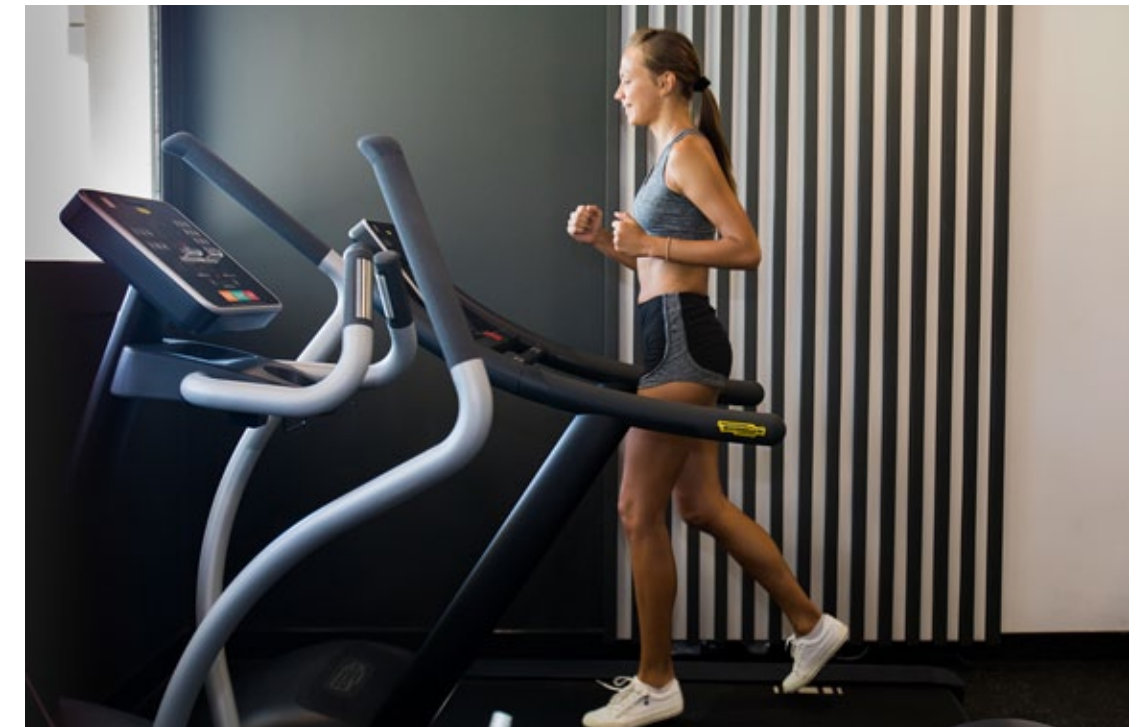
• exterior

**Beathtaking
sea and city
panorama views**



• resident facilities

The building offers outdoor swimming pool, secure covered parking and a fully equipped gym



• resident facilities



masterplan



choice of properties

block a

| UNIT NO | PROPERTY TYPE | BEDROOMS | BATH-ROOMS | NO OF PARK SPACES | INDOOR AREA M ² | COV. VERANDA M ² | STORAGE M ² | COMMON AREA PER UNIT M ² | TOTAL AREA M ² |
|---------|---------------|----------|------------|-------------------|----------------------------|-----------------------------|------------------------|-------------------------------------|---------------------------|
| A101 | Apartment | 2 | 2 | 1 | 84.00 | 18.20 | 2.60 | 12.59 | 117.39 |
| A102 | Apartment | 2 | 2 | 1 | 86.40 | 18.20 | 2.66 | 12.89 | 120.15 |
| A103 | Apartment | 1 | 1 | 1 | 52.30 | 19.50 | 3.03 | 8.84 | 83.67 |
| A104 | Apartment | 3 | 2 | 2 | 112.90 | 41.50 | 3.53 | 19.02 | 176.95 |
| A105 | Apartment | 1 | 1 | 1 | 54.00 | 13.00 | 2.98 | 8.25 | 78.23 |
| A201 | Apartment | 2 | 2 | 1 | 84.00 | 18.20 | 2.91 | 12.59 | 117.70 |
| A202 | Apartment | 2 | 2 | 1 | 86.40 | 18.20 | 2.78 | 12.89 | 120.27 |
| A203 | Apartment | 1 | 1 | 1 | 52.30 | 19.50 | 2.75 | 8.84 | 83.39 |
| A204 | Apartment | 3 | 2 | 2 | 112.90 | 41.50 | 2.52 | 19.02 | 175.94 |
| A205 | Apartment | 1 | 1 | 1 | 54.00 | 13.00 | 2.46 | 8.25 | 77.71 |
| A301 | Apartment | 2 | 2 | 1 | 84.00 | 18.20 | 3.43 | 12.59 | 118.22 |
| A302 | Apartment | 2 | 2 | 1 | 86.40 | 18.20 | 2.93 | 12.89 | 120.42 |
| A303 | Apartment | 1 | 1 | 1 | 52.30 | 19.50 | 2.60 | 8.84 | 83.24 |
| A304 | Apartment | 3 | 2 | 2 | 112.90 | 41.50 | 2.52 | 19.02 | 175.94 |
| A305 | Apartment | 1 | 1 | 1 | 54.00 | 13.00 | 2.61 | 8.25 | 77.86 |
| A401 | Apartment | 2 | 2 | 1 | 84.00 | 18.20 | 3.79 | 12.59 | 118.58 |
| A402 | Apartment | 3 | 3 | 2 | 116.50 | 35.40 | 3.44 | 18.71 | 174.05 |
| A403 | Apartment | 3 | 2 | 2 | 119.60 | 41.50 | 3.36 | 19.85 | 184.31 |
| A404 | Apartment | 1 | 1 | 1 | 53.70 | 13.30 | 3.45 | 8.25 | 78.70 |

NOTE: the areas stated above may slightly differ upon issuance of relevant authority permits



• floor plans



ground floor block a



floor 1 block a



| Unit № | Total Area, m ² |
|--------|----------------------------|
| 101 | 117.39 |
| 102 | 120.15 |
| 103 | 83.67 |
| 104 | 176.95 |
| 105 | 78.23 |



• floor plans



floor 2 block a



| Unit № | Total Area, m ² |
|--------|----------------------------|
| 201 | 117.70 |
| 202 | 120.27 |
| 203 | 83.39 |
| 204 | 175.94 |
| 205 | 77.71 |



floor 3 block a



| Unit № | Total Area, m ² |
|--------|----------------------------|
| 301 | 118.22 |
| 302 | 120.42 |
| 303 | 83.24 |
| 304 | 175.94 |
| 305 | 77.86 |



• floor plans

floor 4
block a



| Unit № | Total Area, m ² |
|--------|----------------------------|
| 401 | 118.58 |
| 402 | 174.05 |
| 403 | 184.31 |
| 404 | 78.70 |



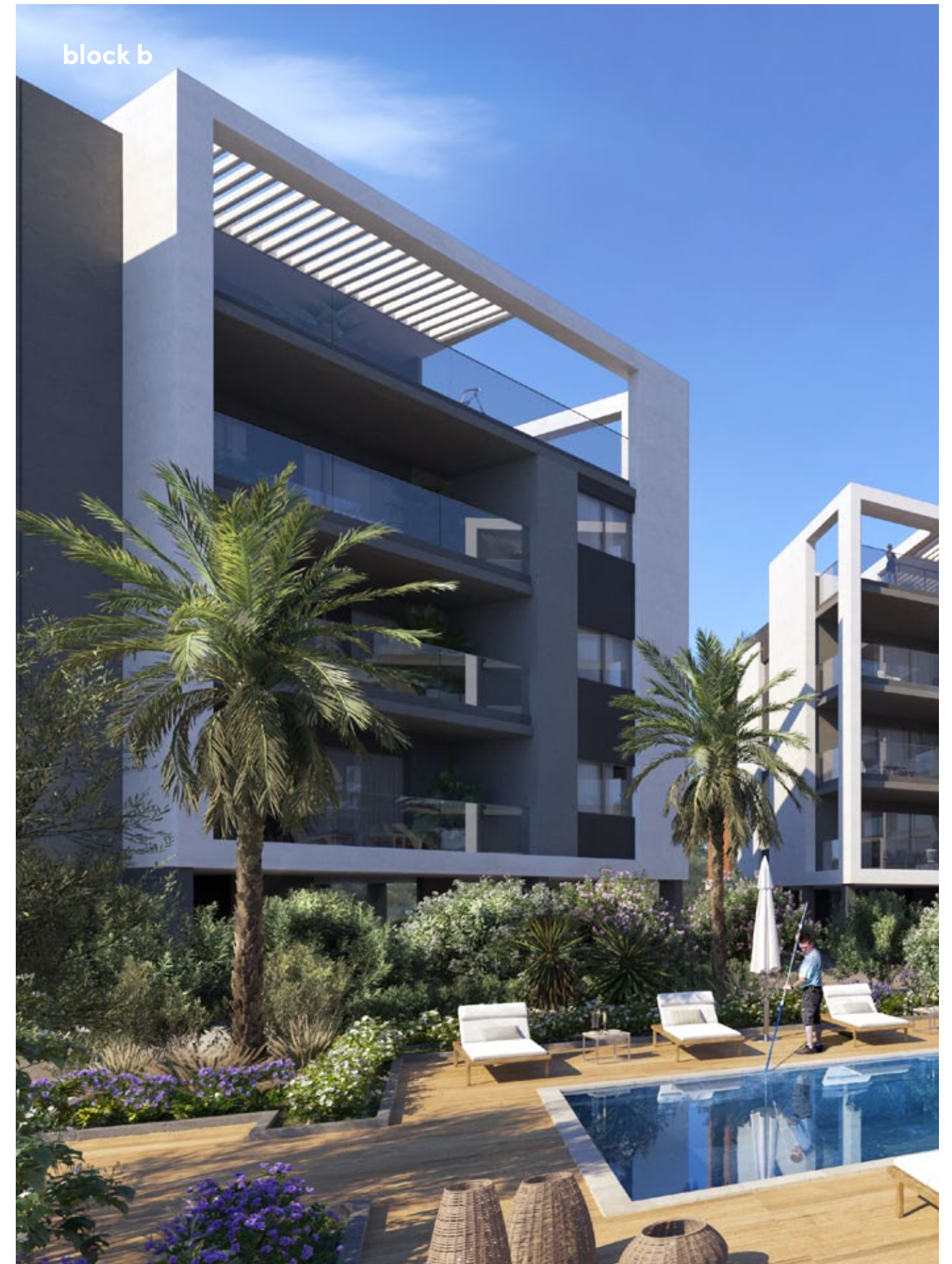
*All 3D images and photographs consist of indicative information and the project can differ insignificantly from the displayed images. Furniture and interior items are extras. Floor plans show approximate measurements only. The exact layout and sizes may vary.

choice of properties

block b

| UNIT NO | PROPERTY TYPE | BED-ROOMS | BATH-ROOMS | NO OF PARK SPACES | INDOOR AREA M ² | COV. VERANDA M ² | COMMON ROOF TERRACE M ² | STORAGE M ² | COMMON AREA PER UNIT M ² | TOTAL AREA M ² |
|---------|---------------|-----------|------------|-------------------|----------------------------|-----------------------------|------------------------------------|------------------------|-------------------------------------|---------------------------|
| B101 | Apartment | 3 | 2 | 2 | 118.70 | 38.40 | 9.70 | 5.30 | 25.53 | 197.63 |
| B102 | Apartment | 1 | 1 | 1 | 52.00 | 15.20 | 4.15 | 4.80 | 10.92 | 87.07 |
| B103 | Apartment | 2 | 2 | 1 | 84.20 | 17.30 | 6.27 | 3.40 | 16.49 | 127.66 |
| B104 | Apartment | 2 | 2 | 1 | 85.00 | 17.80 | 6.35 | 3.50 | 16.70 | 129.35 |
| B201 | Apartment | 3 | 2 | 2 | 118.70 | 38.40 | 9.70 | 4.80 | 25.53 | 197.13 |
| B202 | Apartment | 1 | 1 | 1 | 52.00 | 15.20 | 4.15 | 3.20 | 10.92 | 85.47 |
| B203 | Apartment | 2 | 2 | 1 | 84.20 | 17.30 | 6.27 | 3.10 | 16.49 | 127.36 |
| B204 | Apartment | 2 | 2 | 1 | 85.00 | 17.80 | 6.35 | 3.10 | 16.70 | 128.95 |
| B301 | Apartment | 3 | 3 | 2 | 119.30 | 38.40 | 9.74 | 5.00 | 25.63 | 198.07 |
| B302 | Apartment | 1 | 1 | 1 | 51.80 | 15.20 | 4.14 | 3.20 | 10.89 | 85.23 |
| B303 | Apartment | 2 | 2 | 1 | 84.20 | 17.30 | 6.27 | 4.20 | 16.49 | 128.46 |
| B304 | Apartment | 2 | 2 | 1 | 85.00 | 17.80 | 6.35 | 4.40 | 16.70 | 130.25 |

NOTE: the areas stated above may slightly differ upon issuance of relevant authority permits



• floor plans



ground floor block b



floor 1 block b



| Unit № | Total Area, m ² |
|--------|----------------------------|
| 101 | 197.63 |
| 102 | 87.07 |
| 103 | 127.66 |
| 104 | 129.35 |



• floor plans



floor 2 block b



floor 3 block b



| Unit № | Total Area, m ² |
|--------|----------------------------|
| 201 | 197.13 |
| 202 | 85.47 |
| 203 | 127.36 |
| 204 | 128.95 |



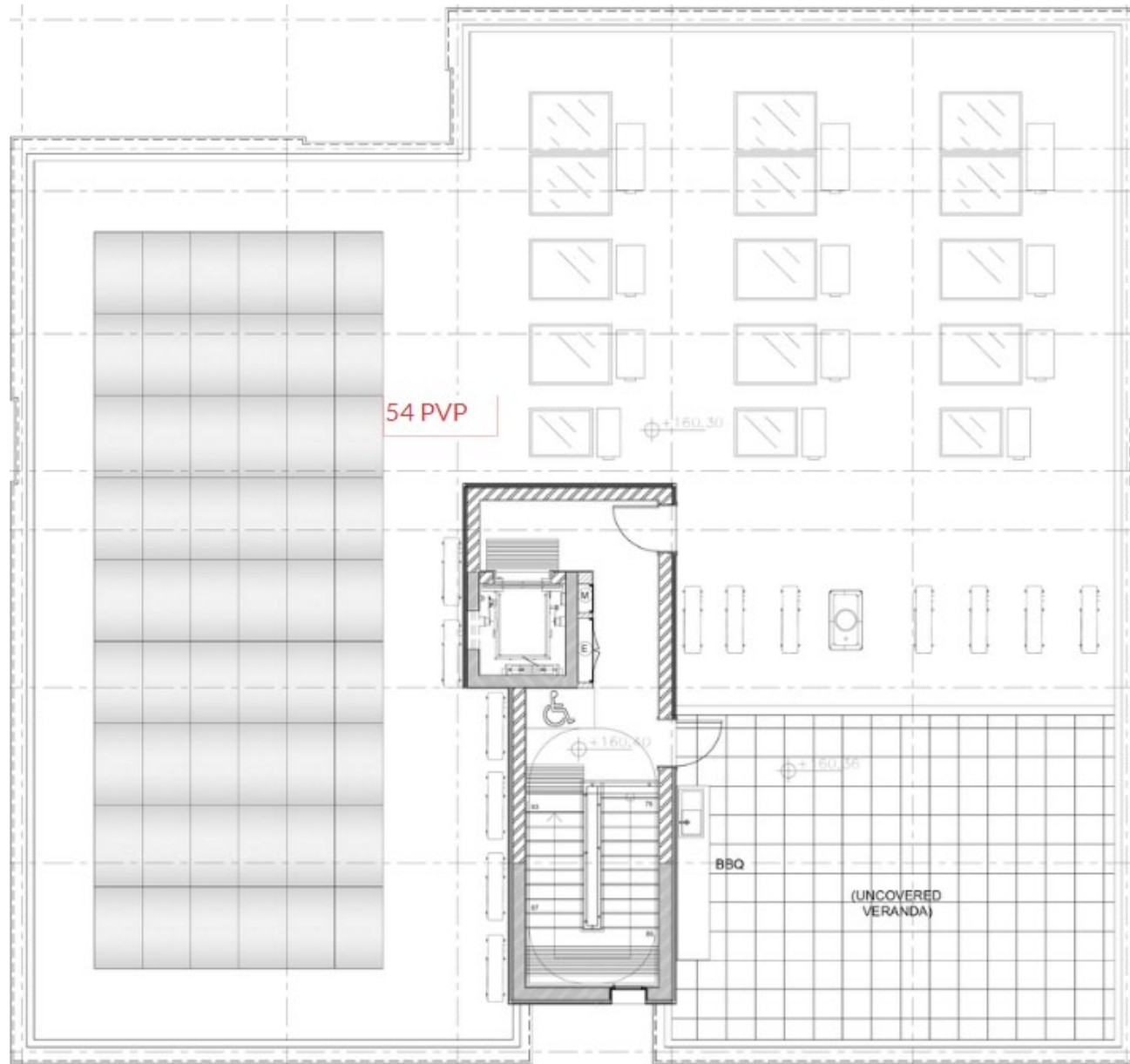
| Unit № | Total Area, m ² |
|--------|----------------------------|
| 301 | 198.07 |
| 302 | 85.23 |
| 303 | 128.46 |
| 304 | 130.25 |



floor plans



floor 5
block b



| Unit № | Total Area, m ² |
|---------------------|----------------------------|
| Common Roof Terrace | 79.45 |



*All 3D images and photographs consist of indicative information and the project can differ insignificantly from the displayed images. Furniture and interior items are extras. Floor plans show approximate measurements only. The exact layout and sizes may vary.

choice of properties

block c

| UNIT NO | PROPERTY TYPE | BED-ROOMS | BATH-ROOMS | NO OF PARK SPACES | INDOOR AREA M ² | COV. VERANDA M ² | COMMON ROOF TERRACE M ² | STORAGE M ² | COMMON AREA PER UNIT M ² | TOTAL AREA M ² |
|---------|---------------|-----------|------------|-------------------|----------------------------|-----------------------------|------------------------------------|------------------------|-------------------------------------|---------------------------|
| C101 | Apartment | 3 | 2 | 1 | 114.80 | 29.00 | 10.82 | 10.82 | 2.25 | 180.07 |
| C102 | Apartment | 2 | 2 | 1 | 90.00 | 23.00 | 8.50 | 8.50 | 2.50 | 142.23 |
| C103 | Apartment | 2 | 2 | 1 | 89.00 | 23.00 | 8.43 | 8.43 | 3.61 | 142.11 |
| C104 | Apartment | 1 | 1 | 1 | 55.40 | 11.70 | 5.05 | 5.05 | 3.26 | 86.23 |
| C201 | Apartment | 3 | 2 | 1 | 114.80 | 29.00 | 10.82 | 10.82 | 4.31 | 182.13 |
| C202 | Apartment | 2 | 2 | 1 | 90.00 | 23.00 | 8.50 | 8.50 | 2.66 | 142.39 |
| C203 | Apartment | 2 | 2 | 1 | 89.00 | 23.00 | 8.43 | 8.43 | 3.36 | 141.86 |
| C204 | Apartment | 1 | 1 | 1 | 55.40 | 11.70 | 5.05 | 5.05 | 3.10 | 86.07 |
| C301 | Apartment | 3 | 3 | 1 | 114.80 | 29.00 | 10.82 | 10.82 | 2.70 | 180.52 |
| C302 | Apartment | 2 | 2 | 1 | 90.00 | 23.00 | 8.50 | 8.50 | 4.10 | 143.83 |
| C303 | Apartment | 2 | 2 | 1 | 89.00 | 23.00 | 8.43 | 8.43 | 5.30 | 143.80 |
| C304 | Apartment | 1 | 1 | 1 | 55.40 | 11.70 | 5.05 | 5.05 | 2.54 | 85.51 |

NOTE: the areas stated above may slightly differ upon issuance of relevant authority permits



floor plans



ground floor block c



floor 1 block c



| Unit № | Total Area, m ² |
|--------|----------------------------|
| 101 | 180.07 |
| 102 | 142.23 |
| 103 | 142.11 |
| 104 | 86.23 |



floor plans



floor 2 block c



| Unit № | Total Area, m ² |
|--------|----------------------------|
| 201 | 182.13 |
| 202 | 142.39 |
| 203 | 141.86 |
| 204 | 86.07 |



floor 3 block c



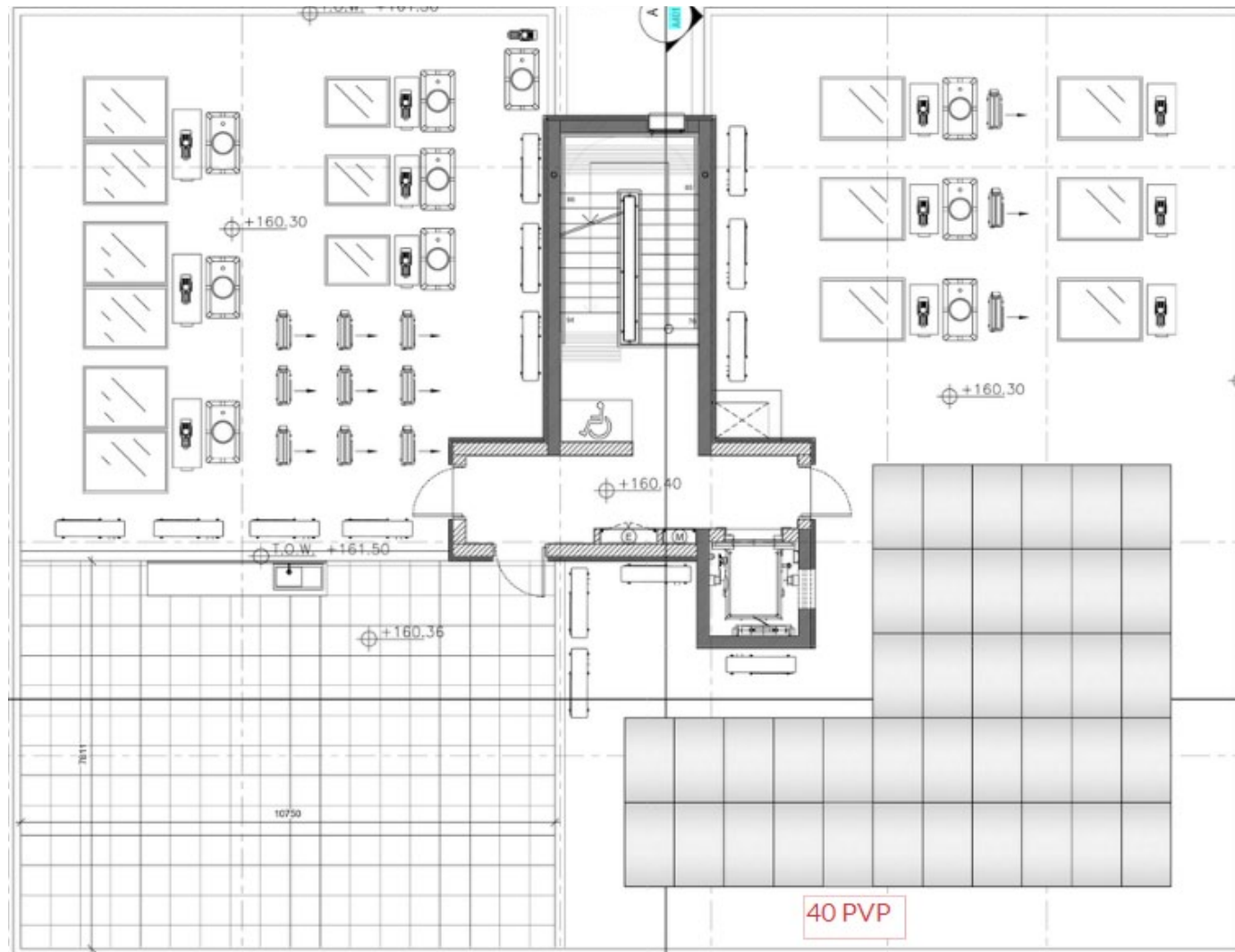
| Unit № | Total Area, m ² |
|--------|----------------------------|
| 301 | 180.52 |
| 302 | 143.83 |
| 303 | 143.80 |
| 304 | 85.51 |



• floor plans



floor 5
block c



| Unit № | Total Area, m ² |
|---------------------|----------------------------|
| Common Roof Terrace | 98.38 |



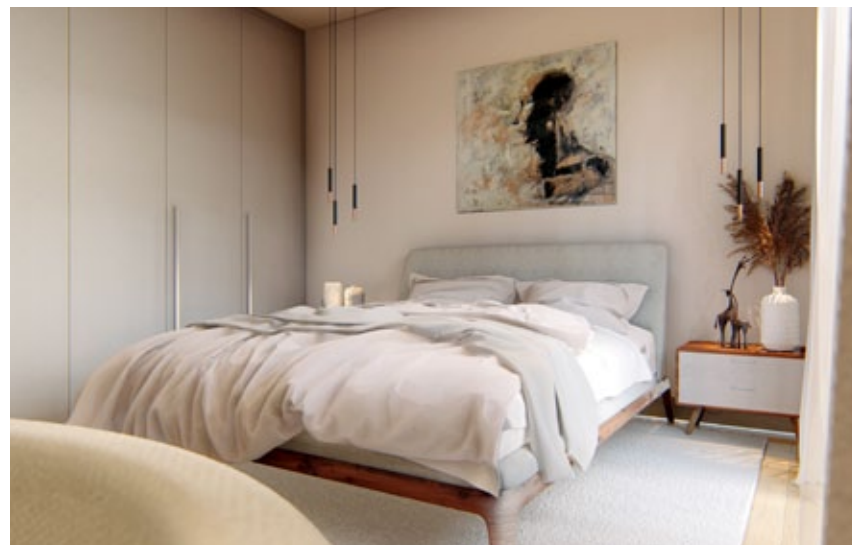
• signature finishes

bbf:smart

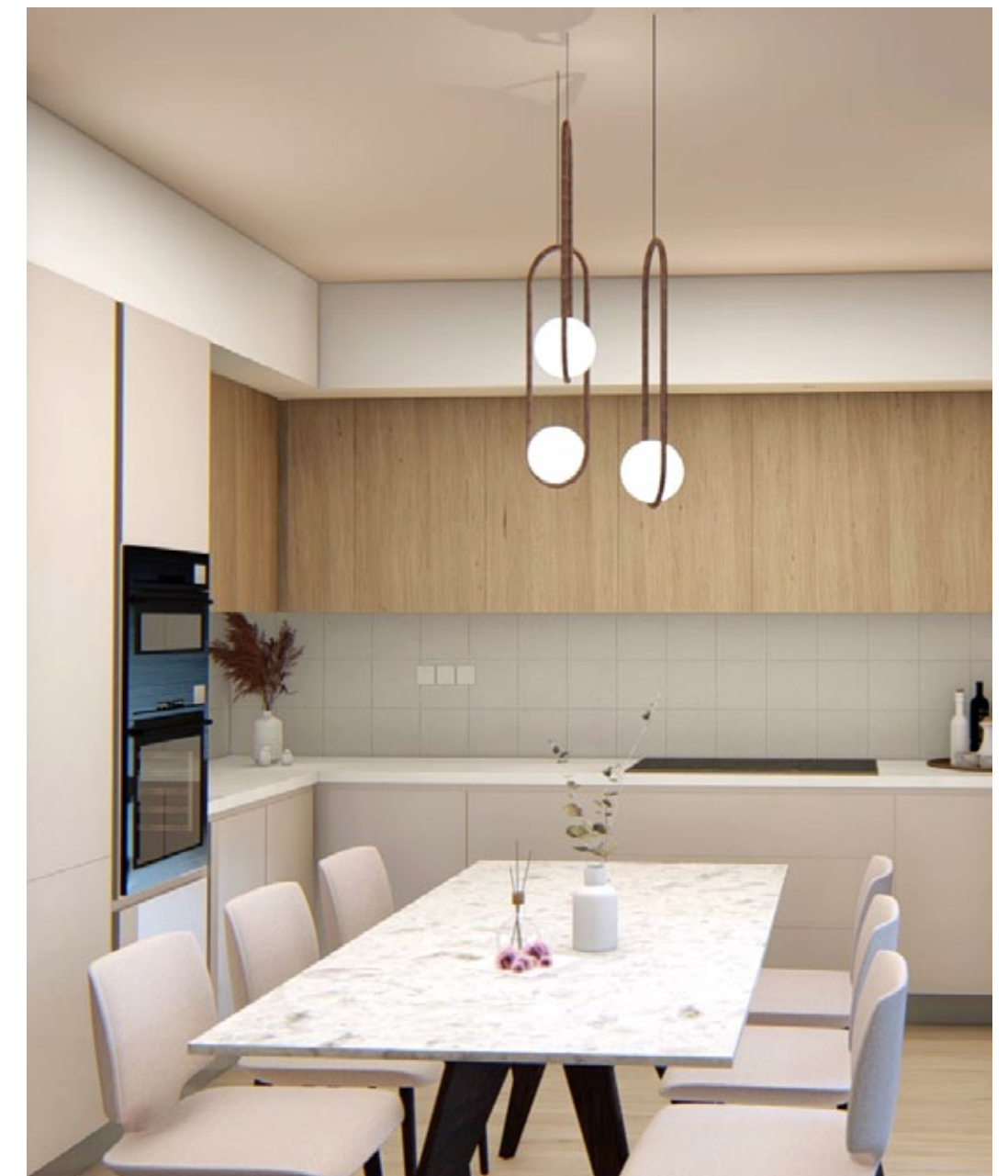
**Every property is delivered with signature
Top standard finishes:**

- Laminate parquet in each room
- Quality ceramic tiles in bathrooms and toilets
- Aluminium window frames with double glazing
- High quality entrance doors
- Provisions for split A/C units in all rooms
- Sanitary ware from European brands
- High quality kitchen cabinets and wardrobes
- Artificial granite worktop

NOTE: movable furniture, home appliances & interior items are extras



signature finishes



•notes

A series of horizontal dotted lines for writing notes.

bbf: Head office

Head Office in Limassol

28 Ampelakion Street, Germasogeia,
4046 Limassol, P.O.Box 70649, Cyprus

Office: +357 25 315 318
info@bbf.com

bbf: Greece

Office in Athens

88 Vasilissis Sofias Avenue,
115 28 Athens, Greece

Office: +30 210 775 5388
greece@bbf.com



bbf.com