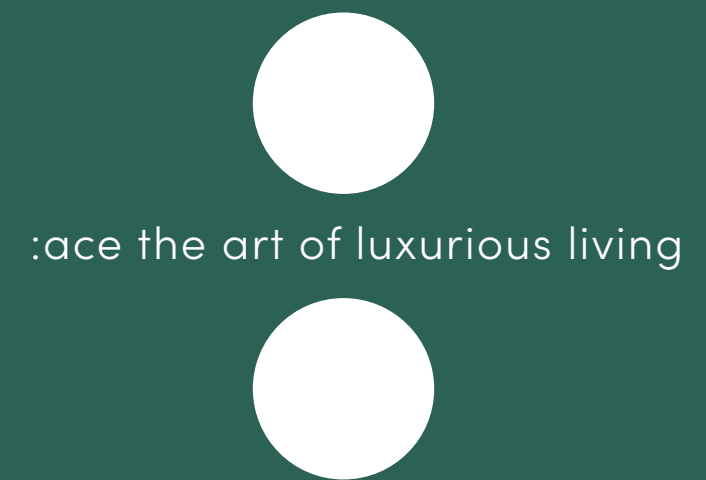




ace



bbf:



:ace the art of luxurious living



Welcome to the  
fastest developing  
business and  
education hub –  
enjoy a grand  
standard of living

Imagine waking up on a Saturday morning in a stunning residential complex with the first sunrays, gently touching your cheeks. The smell of freshly made black coffee and a slightly burnt toast are preparing you for a new beautiful day.

Your agenda might begin from a refreshing dive in the captivating waters of your swimming pool, that will set you on the positive mindset, healthy body and grand motivation for the entire day.



**An ace of your  
home for good  
luck in the  
«City of Dreams»**

Afterwards, you may take a meditative walk to the sandy golden beach, that is only a few moments away from your home.

Enjoy freshly-caught seafood at the Limassol Marina, while gazing at the beautiful yachts, accompanied by the joy, radiating from the walking-by people.

Continue your journey to a luxury complex “City of Dreams”, where some might enjoy spa and beauty treatments, others – entertainment events, and some – a memorable night at the local casino.  
Remember – everything is possible here.

There’s a new chapter about to begin, and it starts here with bbf:





# major benefits

- Gated community with in-house facilities: pool, gym and sauna;
- Prestigious upcoming area of Limassol with rapidly rising demand;
- 2 minutes from a newly built 18-hole golf course;
- Next to Cyprus biggest and only casino resort «City of Dreams»;

- 2 minutes from the famous beach Lady's Mile;
- Across the road from Limassol's biggest shopping and leisure mall;
- 15 minutes drive from Cyprus' cultural icon - open air museum Ancient Kourion;
- 5 minutes drive from Limassol's old town and Cyprus biggest yacht club.





# :location

## Welcome to the Mediterranean Cote d’Azur

A beautiful modern area, that has absolutely everything one can desire.

An emerald forest, next to one of the largest malls in Cyprus and all the important amenities. Just a few moments away from the Limassol Marina, full of cafés, restaurants and captivating views on yachts at the Mediterranean sea and the Lady’s Mile golden beach.

The magnificent property further enjoys a close proximity to the luxury spa, restaurant, entertainment and casino resort “City of Dreams” – where everything is possible!

Additionally, 4 international private schools are easily accessible within a 25-minute drive from the complex.

The famous ancient Kourion, captivating with it’s white rocks and Mediterranean Cote d’Azur is within a 20-minute drive.

An envious location, perfect for short-term rent or more permanent living to make memories and enjoy life like no other.





Each apartment is delivered with premium finishes made from high-quality materials

3 stunning, modern and stylish blocks, forming a gated community in the middle of the emerald :park.

The reinforced concrete foundation of each blocks is made with the close accordance to the European standard, protecting it from any external natural or time damages.



Experience luxury in our gated community with exclusive in-house amenities

The external brick walls are covered with thermal insulation, while the internal walls are equipped with dry-wall system for maximum comfort all-year long. Experience elegance, practicality and comfort at :ace.

There's a new chapter about to begin, and it starts here with BBF.





# • exterior





# • exterior





## • resident facilities

**The building offers outdoor swimming pool, a fully equipped gym and sauna**





# :choice of properties

block a

FLOOR	UNIT N°	PROPERTY TYPE	BED ROOMS	BATH ROOMS	NO OF PARK SPACES	% OF COMMON AREA PER FLOOR	PRIVATE INTERIOR	COVERED VERANDA M²	SELLABLE AREA M²
1st	A101	Apartment	1	1	1	4%	51.83	13.97	65.80
	A102	Apartment	1	1	1	4%	51.58	14.44	66.02
	A103	Apartment	2	2	1	5%	78.98	20.87	99.85
	A104	Apartment	2	2	1	6%	84.39	20.87	105.26
	A105	Apartment	2	2	1	7%	86.23	42.52	128.75
2nd	A201	Apartment	1	1	1	4%	51.83	13.97	65.80
	A202	Apartment	1	1	1	4%	51.58	14.44	66.02
	A203	Apartment	2	2	1	5%	78.98	20.87	99.85
	A204	Apartment	2	2	1	6%	84.39	20.87	105.26
	A205	Apartment	3	2	1	7%	105.28	24.13	129.41
3rd	A301	Apartment	1	1	1	4%	51.83	13.97	65.80
	A302	Apartment	1	1	1	4%	51.58	14.44	66.02
	A303	Apartment	2	2	1	5%	78.98	20.87	99.85
	A304	Apartment	2	2	1	6%	84.39	20.87	105.26
	A305	Apartment	3	2	1	7%	105.28	24.13	129.41
4th	A401	Apartment	2	2	1	7%	94.60	36.84	131.44
	A402	Apartment	2	2	1	5%	78.98	20.87	99.85
	A403	Apartment	2	2	1	6%	84.39	20.87	105.26
	A404	Apartment	3	2	1	7%	105.00	24.13	129.13

block b

FLOOR	UNIT N°	PROPERTY TYPE	BED ROOMS	BATH ROOMS	NO OF PARK SPACES	% OF COMMON AREA PER FLOOR	PRIVATE INTERIOR	COVERED VERANDA M²	SELLABLE AREA M²
1st	B101	Apartment	1	1	1	3%	50.12	12.87	62.99
	B102	Apartment	1	1	1	3%	51.54	13.59	65.13
	B103	Apartment	2	2	1	5%	78.32	25.25	103.57
	B104	Studio	1	1	1	2%	36.04	12.45	48.49
	B105	Apartment	2	2	1	5%	78.32	20.87	99.19
	B106	Apartment	1	1	1	3%	51.54	13.59	65.13
	B107	Apartment	1	1	1	3%	52.97	12.87	65.84
2nd	B201	Apartment	1	1	1	3%	50.12	12.87	62.99
	B202	Apartment	1	1	1	3%	51.54	13.59	65.13
	B203	Apartment	2	2	1	5%	78.32	25.25	103.57
	B204	Studio	1	1	1	2%	36.04	12.45	48.49
	B205	Apartment	2	2	1	5%	78.32	20.87	99.19
	B206	Apartment	1	1	1	3%	51.54	13.59	65.13
	B207	Apartment	1	1	1	3%	52.97	12.87	65.84
3rd	B301	Apartment	1	1	1	3%	50.12	12.87	62.99
	B302	Apartment	1	1	1	3%	51.54	13.59	65.13
	B303	Apartment	2	2	1	5%	78.32	25.25	103.57
	B304	Studio	1	1	1	2%	36.04	12.45	48.49
	B305	Apartment	2	2	1	5%	78.32	20.87	99.19
	B306	Apartment	1	1	1	3%	51.54	13.59	65.13
	B307	Apartment	1	1	1	3%	52.97	12.87	65.84
4th	B401	Apartment	2	2	1	6%	89.55	27.29	116.84
	B402	Apartment	2	2	1	5%	78.32	25.25	103.57
	B403	Studio	1	1	1	2%	36.04	12.45	48.49
	B404	Apartment	2	2	1	5%	78.70	25.25	103.95
	B405	Apartment	2	2	1	6%	90.51	26.87	117.38

NOTE: the areas stated above may slightly differ upon issuance of relevant authority permits

# :choice of properties

block c

FLOOR	UNIT N°	PROPERTY TYPE	BED ROOMS	BATH ROOMS	NO OF PARK SPACES	% OF COMMON AREA PER FLOOR	PRIVATE INTERIOR	COVERED VERANDA M²	SELLABLE AREA M²
1st	C101	Apartment	1	1	1	4%	51.83	13.97	65.80
	C102	Apartment	1	1	1	4%	51.58	14.44	66.02
	C103	Apartment	2	2	1	5%	78.98	20.87	99.85
	C104	Apartment	2	2	1	6%	84.39	20.87	105.26
	C105	Apartment	2	2	1	7%	86.23	42.52	128.75
2nd	C201	Apartment	1	1	1	4%	51.83	13.97	65.80
	C202	Apartment	1	1	1	4%	51.58	14.44	66.02
	C203	Apartment	2	2	1	5%	78.98	20.87	99.85
	C204	Apartment	2	2	1	6%	84.39	20.87	105.26
	C205	Apartment	3	2	1	7%	105.28	24.13	129.41
3rd	C301	Apartment	1	1	1	4%	51.83	13.97	65.80
	C302	Apartment	1	1	1	4%	51.58	14.44	66.02
	C303	Apartment	2	2	1	5%	78.98	20.87	99.85
	C304	Apartment	2	2	1	6%	84.39	20.87	105.26
	C305	Apartment	3	2	1	7%	105.28	24.13	129.41
4th	C401	Apartment	2	2	1	7%	94.60	36.84	131.44
	C402	Apartment	2	2	1	5%	78.98	20.87	99.85
	C403	Apartment	2	2	1	6%	84.39	20.87	105.26
	C404	Apartment	3	2	1	7%	105.00	24.13	129.13

NOTE: the areas stated above may slightly differ upon issuance of relevant authority permits



# master plan

ground floor



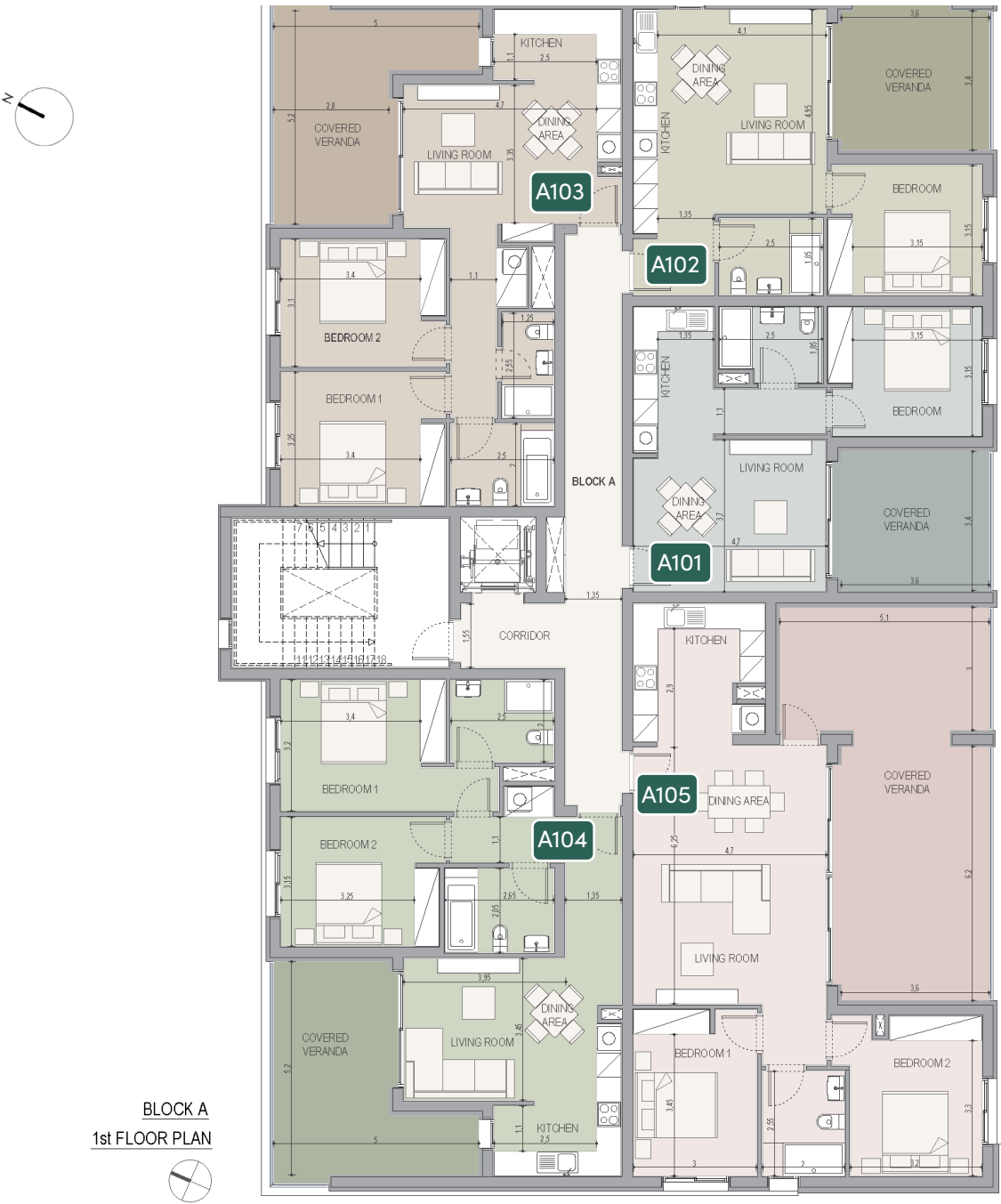


# •floors plan

block a

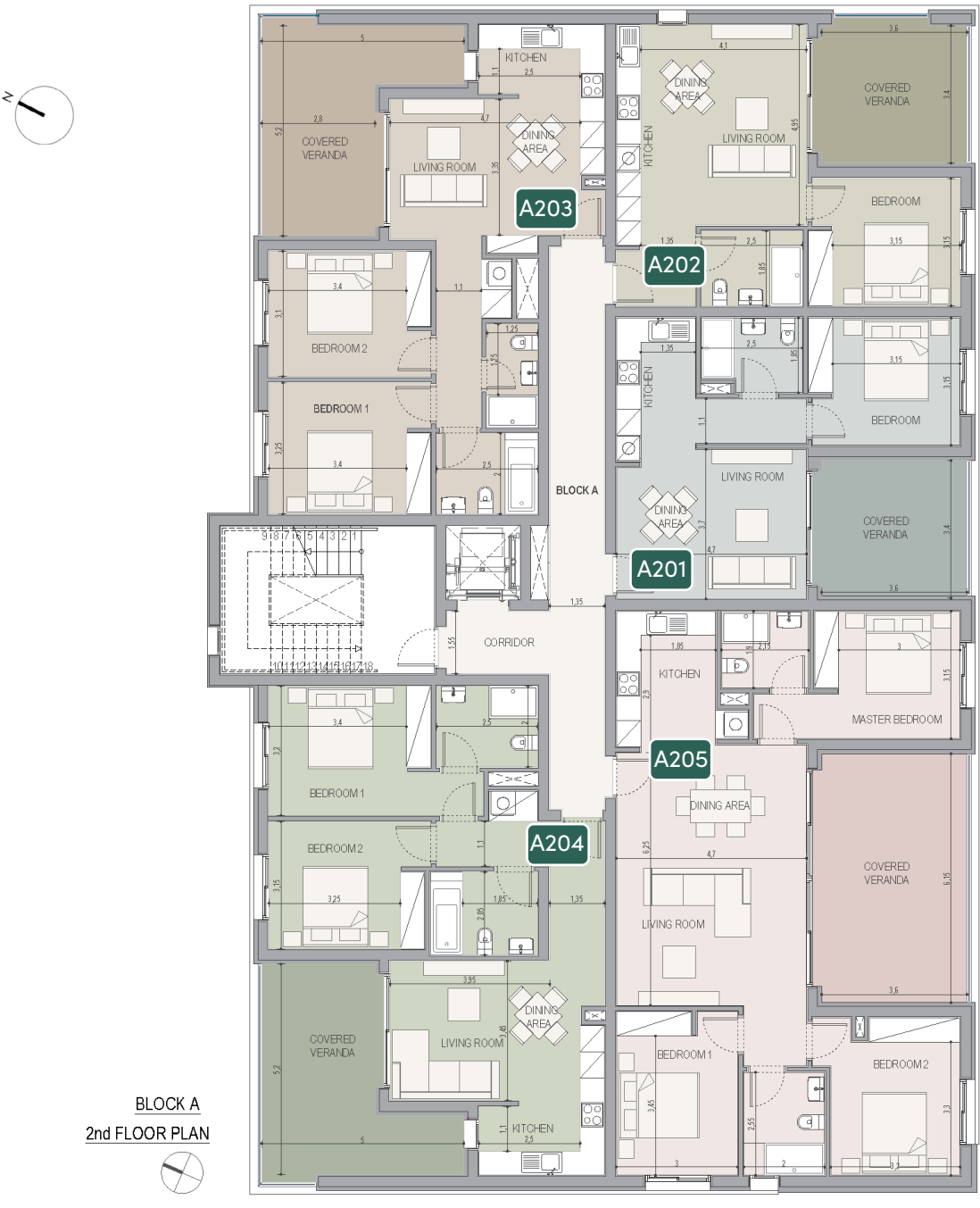
## floor 1

UNIT N°	TOTAL AREA M <sup>2</sup>
A101	65.80
A102	66.02
A103	99.85
A104	105.26
A105	128.75



## floor 2

UNIT N°	TOTAL AREA M <sup>2</sup>
A201	65.80
A202	66.02
A203	99.85
A204	105.26
A205	129.41

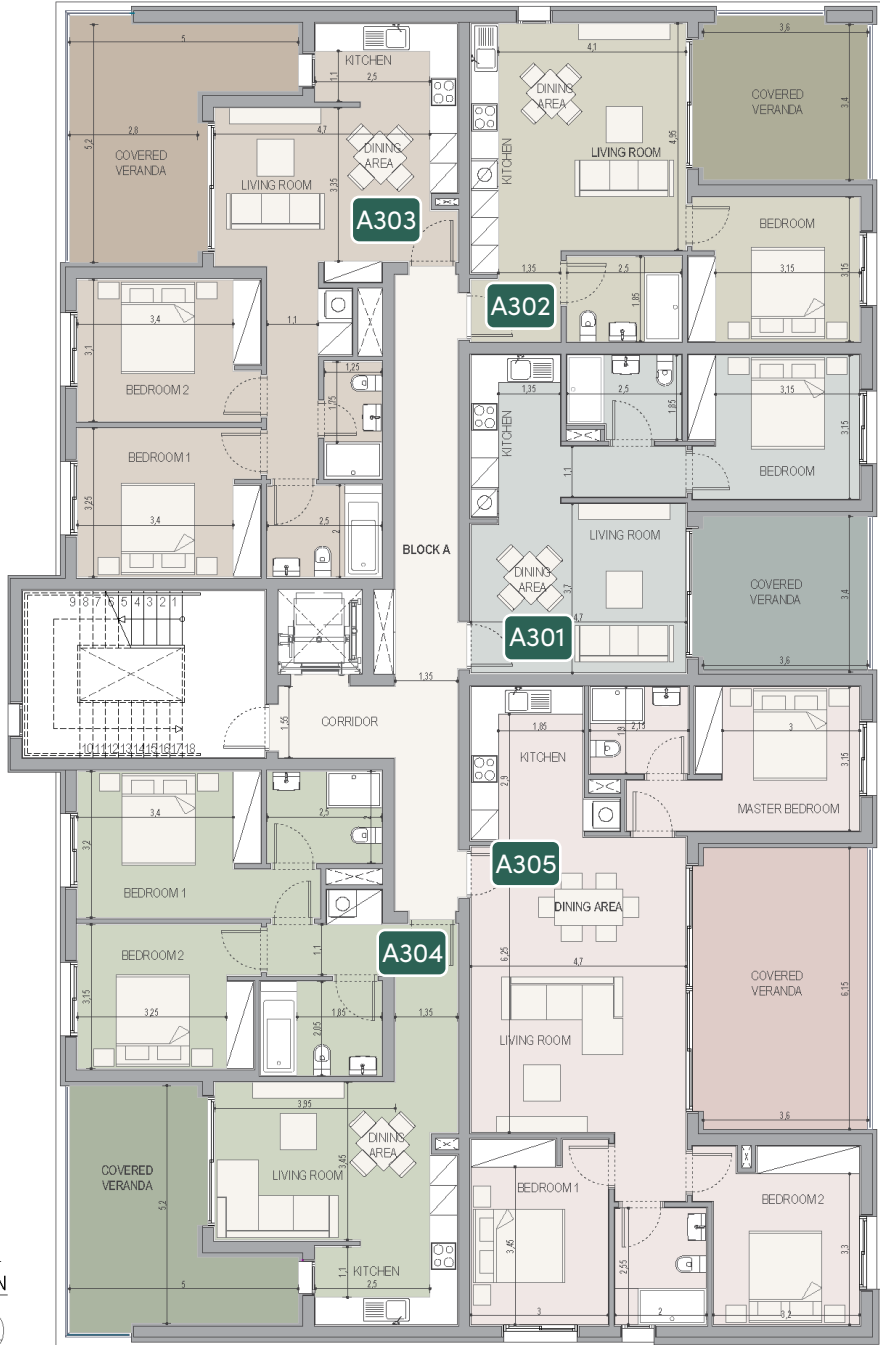




# :floors plan

floor 3

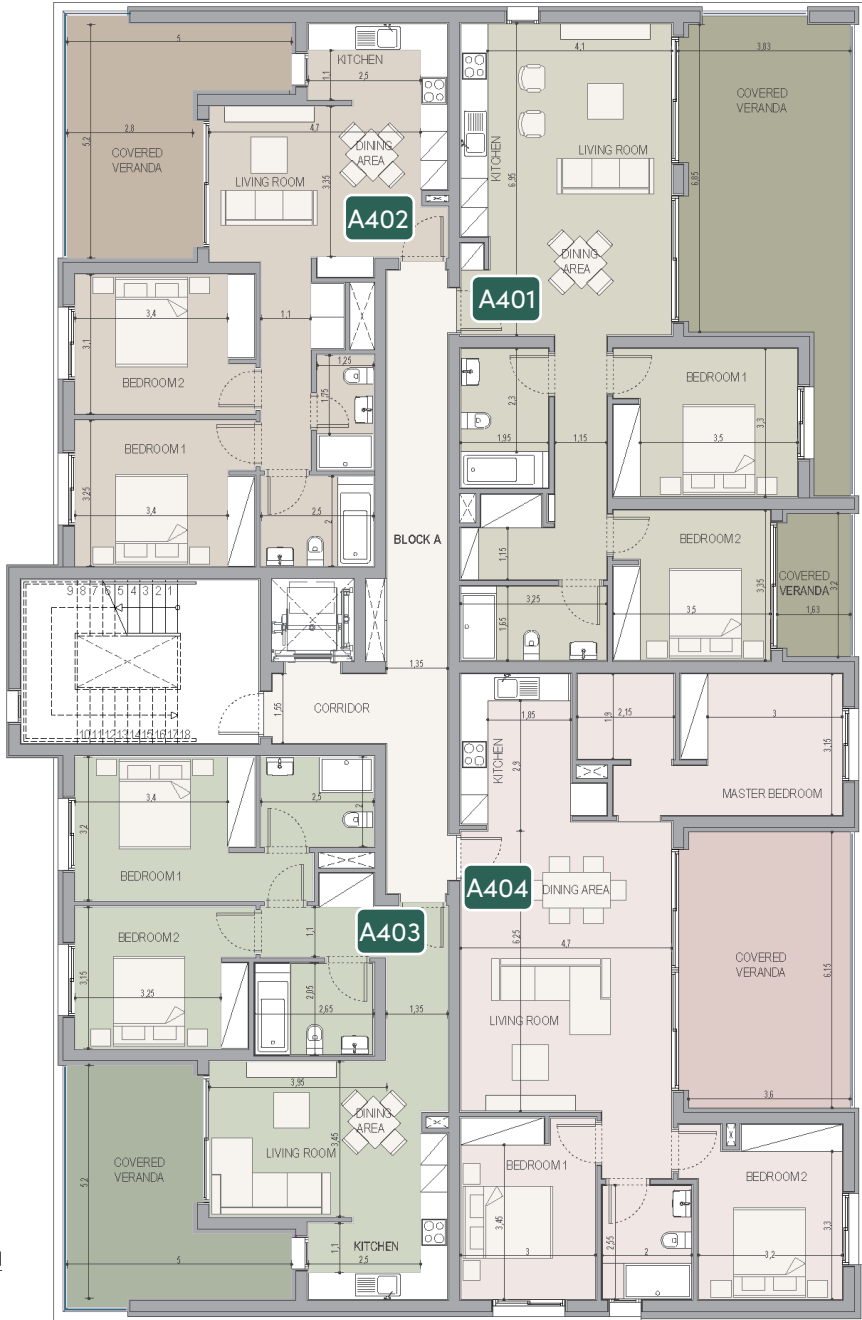
UNIT N°	TOTAL AREA M <sup>2</sup>
A301	65.80
A302	66.02
A303	99.85
A304	105.26
A305	129.41



BLOCK A  
3rd FLOOR PLAN

floor 4

UNIT N°	TOTAL AREA M <sup>2</sup>
A401	131.44
A402	99.85
A403	105.26
A404	129.13



BLOCK A  
4th FLOOR PLAN



# :floors plan

block b

## floor 1

UNIT N°	TOTAL AREA M²
B101	62.99
B102	65.13
B103	103.57
B104	48.57
B105	99.19
B106	65.13
B107	65.84



BLOCK B  
1st FLOOR PLAN  
1:100

## floor 2

UNIT N°	TOTAL AREA M²
B201	62.99
B202	65.13
B203	103.57
B204	48.49
B205	99.19
B206	65.13
B207	65.84



BLOCK B  
2nd FLOOR PLAN  
1:100



# :floors plan

## floor 3

UNIT N°	TOTAL AREA M <sup>2</sup>
B301	62.99
B302	65.13
B303	103.57
B304	48.49
B305	99.19
B306	65.13
B307	65.84



BLOCK B  
3rd FLOOR PLAN  
1:100

## floor 4

UNIT N°	TOTAL AREA M <sup>2</sup>
B401	116.84
B402	103.57
B403	48.49
B404	103.95
B405	117.38



BLOCK B  
4th FLOOR PLAN  
1:100

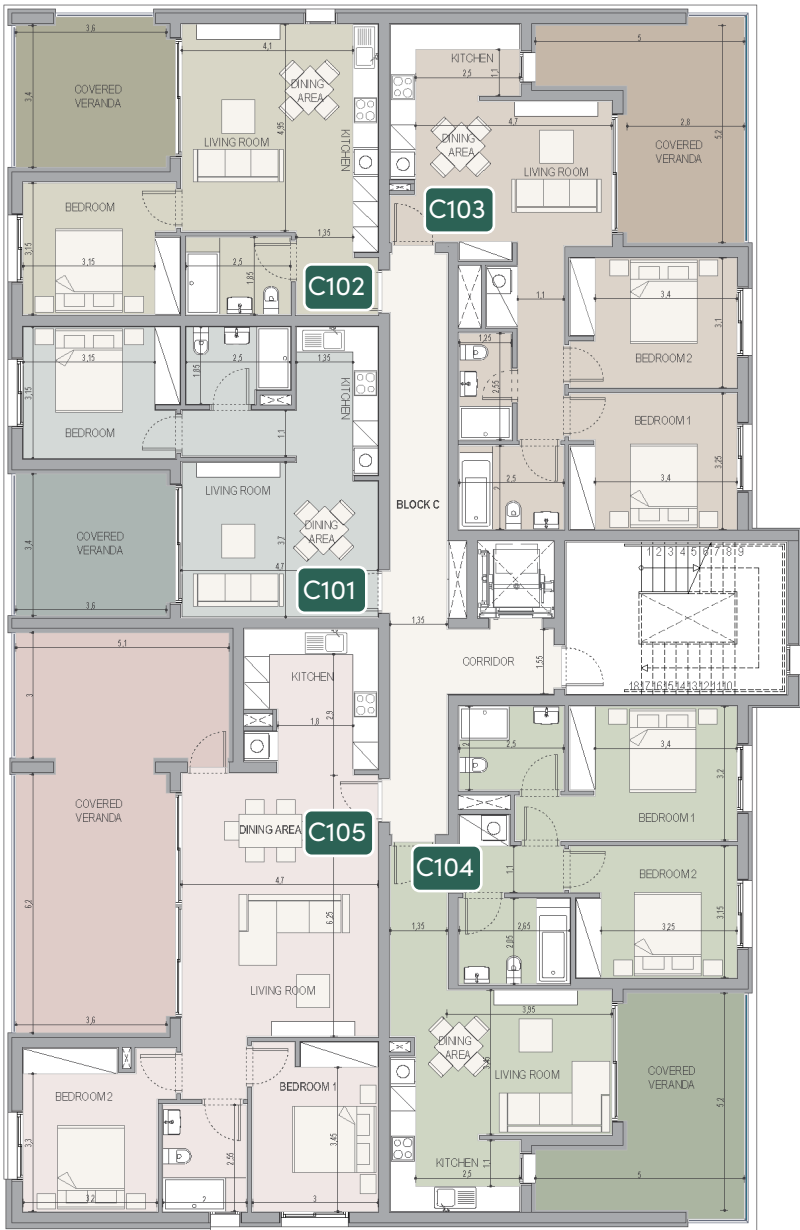


# •floors plan

block c

## floor 1

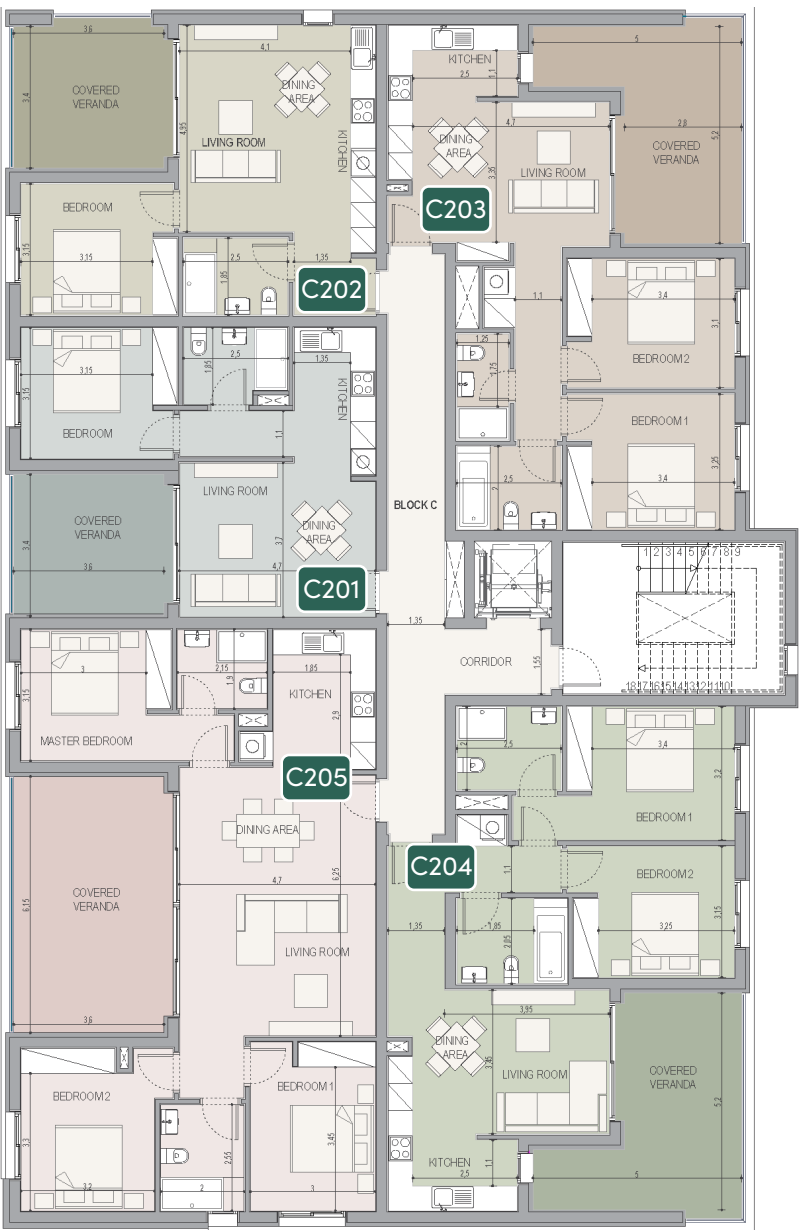
UNIT N°	TOTAL AREA M²
C101	65.80
C102	66.02
C103	99.85
C104	105.26
C105	128.75



BLOCK C  
1st FLOOR PLAN  
1:100

## floor 2

UNIT N°	TOTAL AREA M²
C201	65.80
C202	66.02
C203	99.85
C204	105.26
C205	129.41



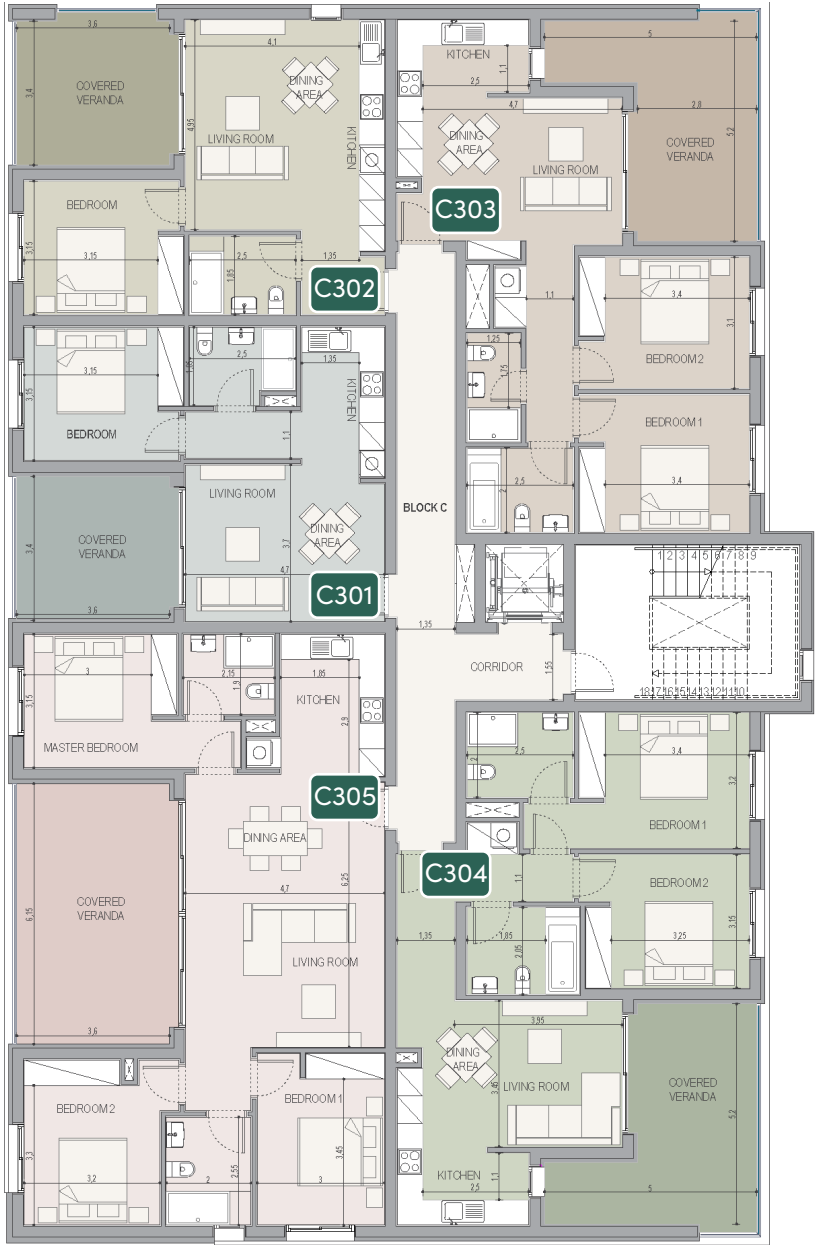
BLOCK C  
2nd FLOOR PLAN  
1:100



# :floors plan

## floor 3

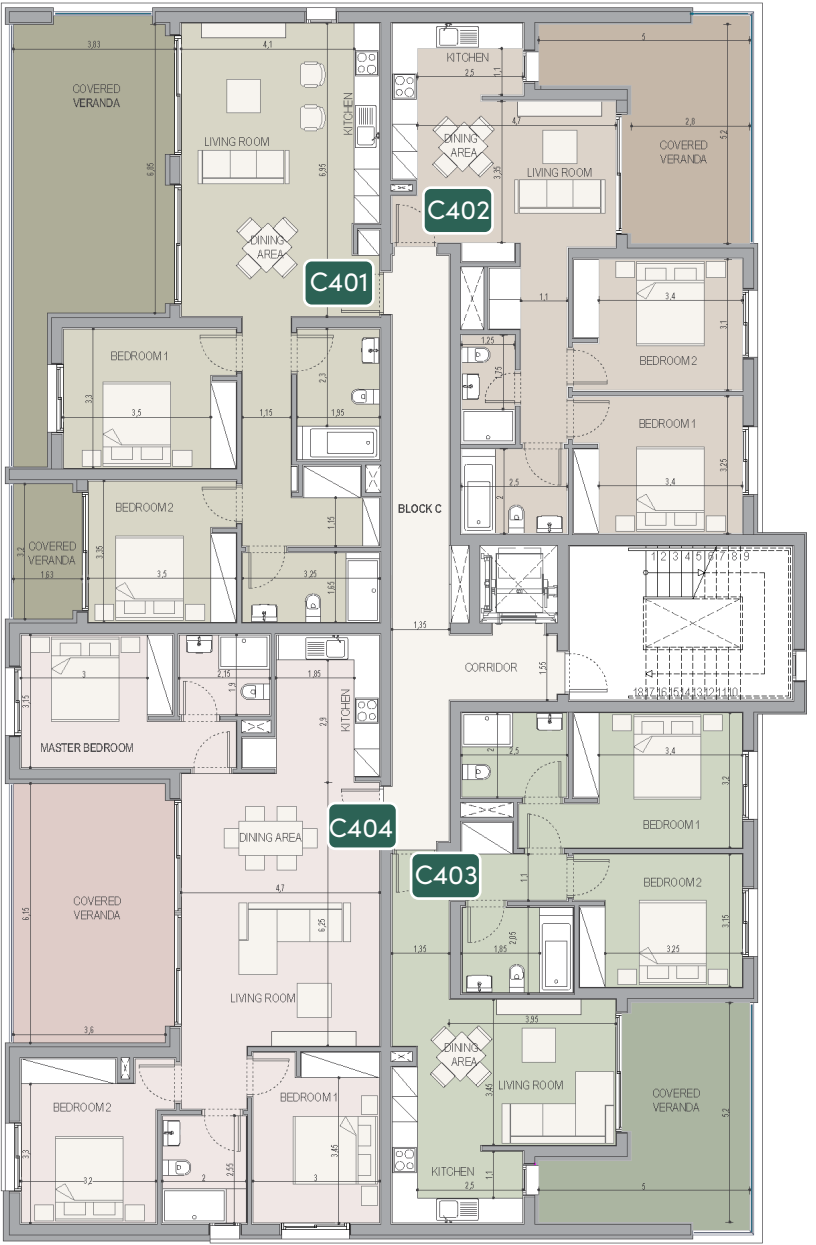
UNIT N°	TOTAL AREA M <sup>2</sup>
C301	65.80
C302	66.02
C303	99.85
C304	105.26
C305	129.41



BLOCK C  
3rd FLOOR PLAN  
1:100

## floor 4

UNIT N°	TOTAL AREA M <sup>2</sup>
C401	131.44
C402	99.85
C403	105.26
C404	129.13



BLOCK C  
4th FLOOR PLAN  
1:100



# signature finishes

## bbf:smart

**Every property is delivered with signature top standard finishes:**

- Fully completed finishings;
- Laminated parquet in living areas and bedrooms;
- Ceramic tiles in the toilets and bathrooms;
- Security and fireproof entrance doors;
- Provisions for A/C;
- Provisions for underfloor heating;
- High standard sanitary ware from European brands;
- Thermal aluminum window frames with double glazing;
- High standard kitchen cabinets;
- High-standard wardrobes from European brands

**note:** movable furniture, home appliances & interior items are extras





## bbf: Head office

### Head Office in Limassol

28 Ampelakion Street, Germasogeia,  
4046 Limassol, P.O.Box 70649, Cyprus

**Office:** +357 25 315 318  
[info@bbf.com](mailto:info@bbf.com)

## bbf: Greece

### Office in Athens

88 Vasilissis Sofias Avenue,  
115 28 Athens, Greece

**Office:** +30 210 775 5388  
[greece@bbf.com](mailto:greece@bbf.com)

