

# TOURIST APOLLONIA APARTMENTS



THE ULTIMATE CITY  
LUXURY LIVING

# TOURIST APOLLONIA APARTMENTS

JUST 200 METERS AWAY  
FROM THE BEST SANDY  
BEACHES

This stylish and modern gated project has just 6 luxury units: 1-, 2-, 3- bedroom apartments and 3-bedroom penthouse with its own roof terrace and a private swimming pool. The carefully designed masterplan and high quality finishing materials, coupled with a conceptual design, will satisfy those who value true style and comfort. Solid wood parquet floors, marble bathrooms, high-quality kitchens and built-in wardrobes — these are only a few of the many luxuries this project offers to make it ideal for a perfect lifestyle as well as a prosperous investment.



## MAJOR BENEFITS

- | Contemporary residence consisting of only 5 apartments and 1 penthouse in a prestigious residential location
- | Just 300 meters to the best sandy beaches
- | Gated community with controlled entrance
- | Covered parking

- | High ceilings (3.15 meters)
- | High standard finishes
- | Water heated floors
- | Central VRV conditioning
- | Penthouse with a private roof terrace and swimming pool



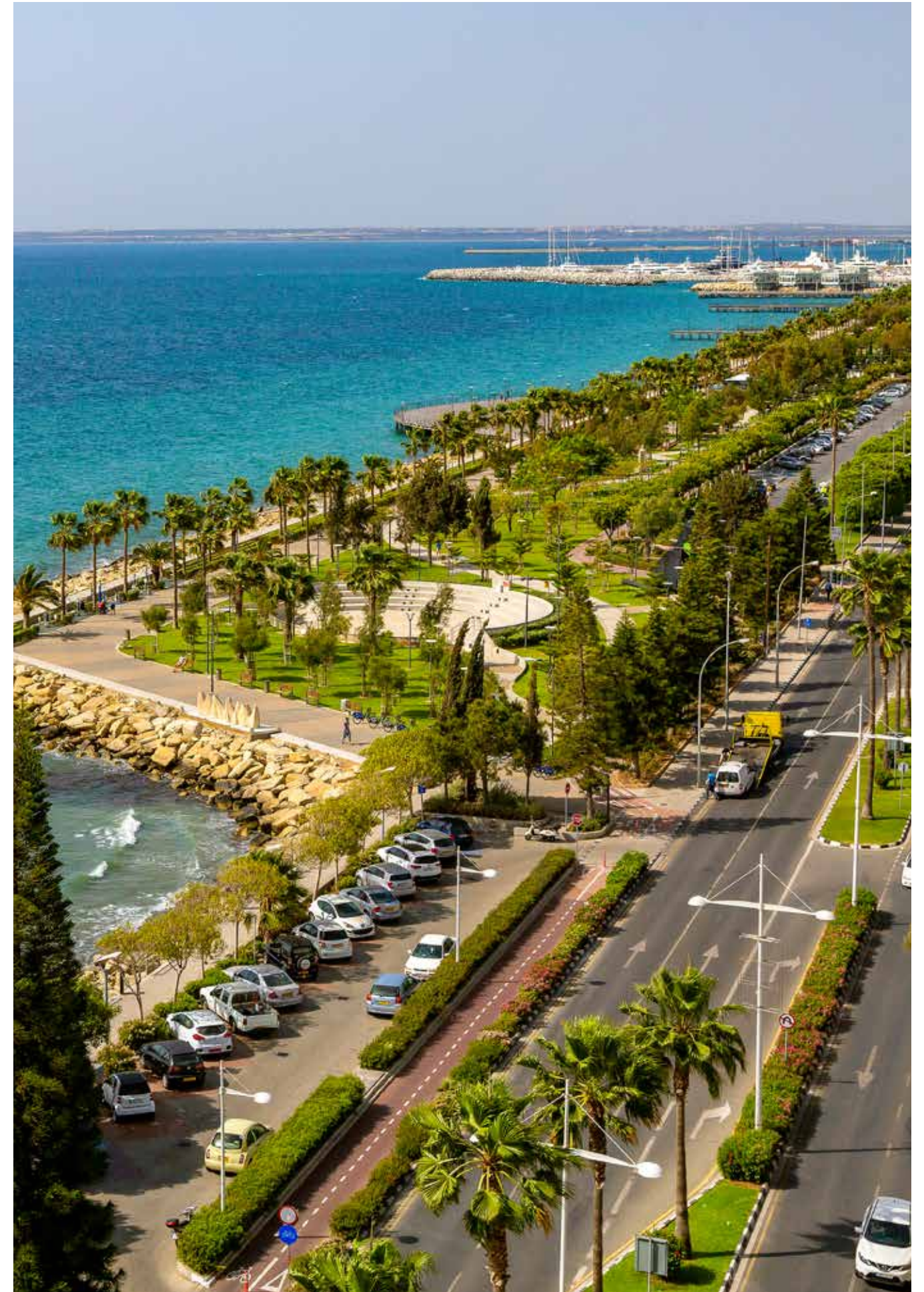
# INTRODUCTION

LIMASSOL  
COMBINES THE FAST  
PACE OF A CITY AND  
THE COMFORT OF A  
FIRST-CLASS  
MEDITERRANEAN  
RESORT

Limassol is the second largest urban area in Cyprus, located on the southern coast, with an urban population of 160,000 — 176,700. Limassol was built between two ancient cities — Amathus and Kourion — and during Byzantine rule it was known as Neapolis (new town). Limassol's historical centre is located around its medieval Limassol Castle and the Old Port. Today the city spreads along the Mediterranean coast and has extended much farther than the castle and port, with its suburbs stretching along the coast to Amathus.

The history of Limassol is largely associated with the Third Crusade of Richard the Lionheart, who arrived in Limassol in 1191 on his way to the Holy Land. He arrested the renegade Byzantine Greek governor of Cyprus Limassol, Isaac Komnenos, taking over the entire island, and bringing the long Byzantine dominion of Cyprus to an end. Richard also celebrated his marriage with Berengaria who had received the crown as queen of England in Limassol. Richard destroyed Amathus and the inhabitants were transferred to Limassol.

Limassol has a Subtropical-Mediterranean climate with warm to hot and dry summers and very mild winters, which are separated by short springs and autumns which are generally warm and pleasant.



# LOCATION

THIS PROJECT IS NESTLED IN A CAREFULLY SELECTED QUIET AND SAFE NEIGHBOURHOOD IN ONE OF THE MOST PRESTIGIOUS AREAS OF LIMASSOL

From picturesque city and mountain views, Limassol offers five star hotels such as Londa and Apollonia as well as all city amenities necessary for a comfortable living are within a few moments away. Supermarkets, bakeries, banks, pharmacies, leisure spots, cafes and the finest high class restaurants are just moments away. This luxurious residence is located in Germasogeia – the heart of the Limassol’s tourist area and is considered to be an extraordinary location. This geographical position which is between mountains and sea is only a few steps away from Dasoudi Beach known for its golden sands, clean and calm seawaters and a Eucalyptus Park. As a popular coastal strip, the town provides everything for a perfect day out to exquisite dining and nightlife.





\*All 3D images consist of indicative information and the project can differ insignificantly from the displayed images



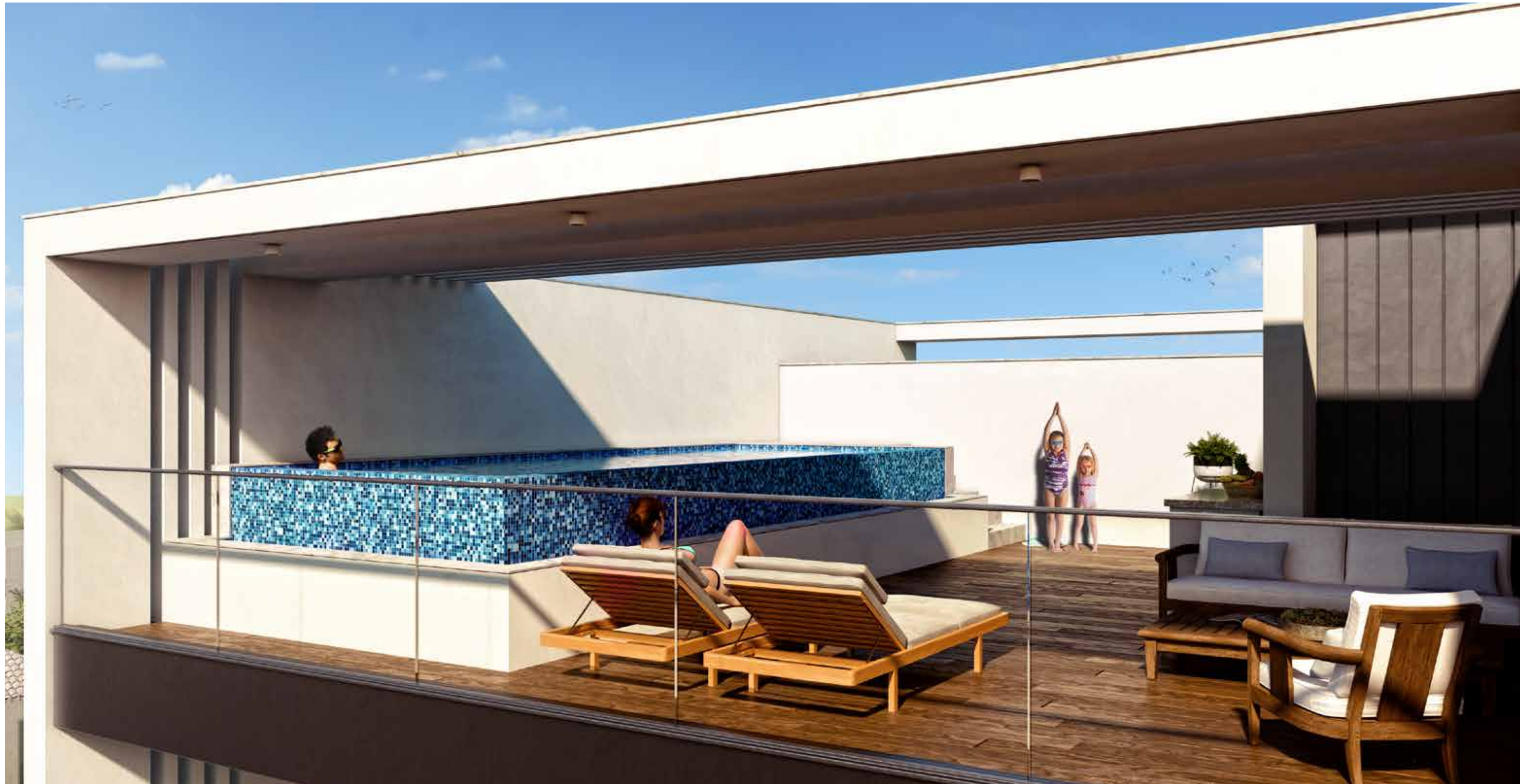
LUXURY FINISHES: LUXURIOUS MARBLE FLOORS OR PARQUET, KITCHEN CABINETS FROM KNOWN BRANDS, DOUBLE GLAZED WINDOWS WITH ALUMINUM FRAMES, FIRST CLASS SANITARY WARE



\*All 3D images consist of indicative information and the project can differ insignificantly from the displayed images



MODERN GATED PROJECT HAS 1-, 2-, 3-  
BEDROOM APARTMENTS AND 3-BEDROOM  
PENTHOUSE WITH ITS OWN ROOF TERRACE  
WITH A PRIVATE SWIMMING POOL



\*All 3D images consist of indicative information and the project can differ insignificantly from the displayed images

# CHOICE OF PROPERTIES

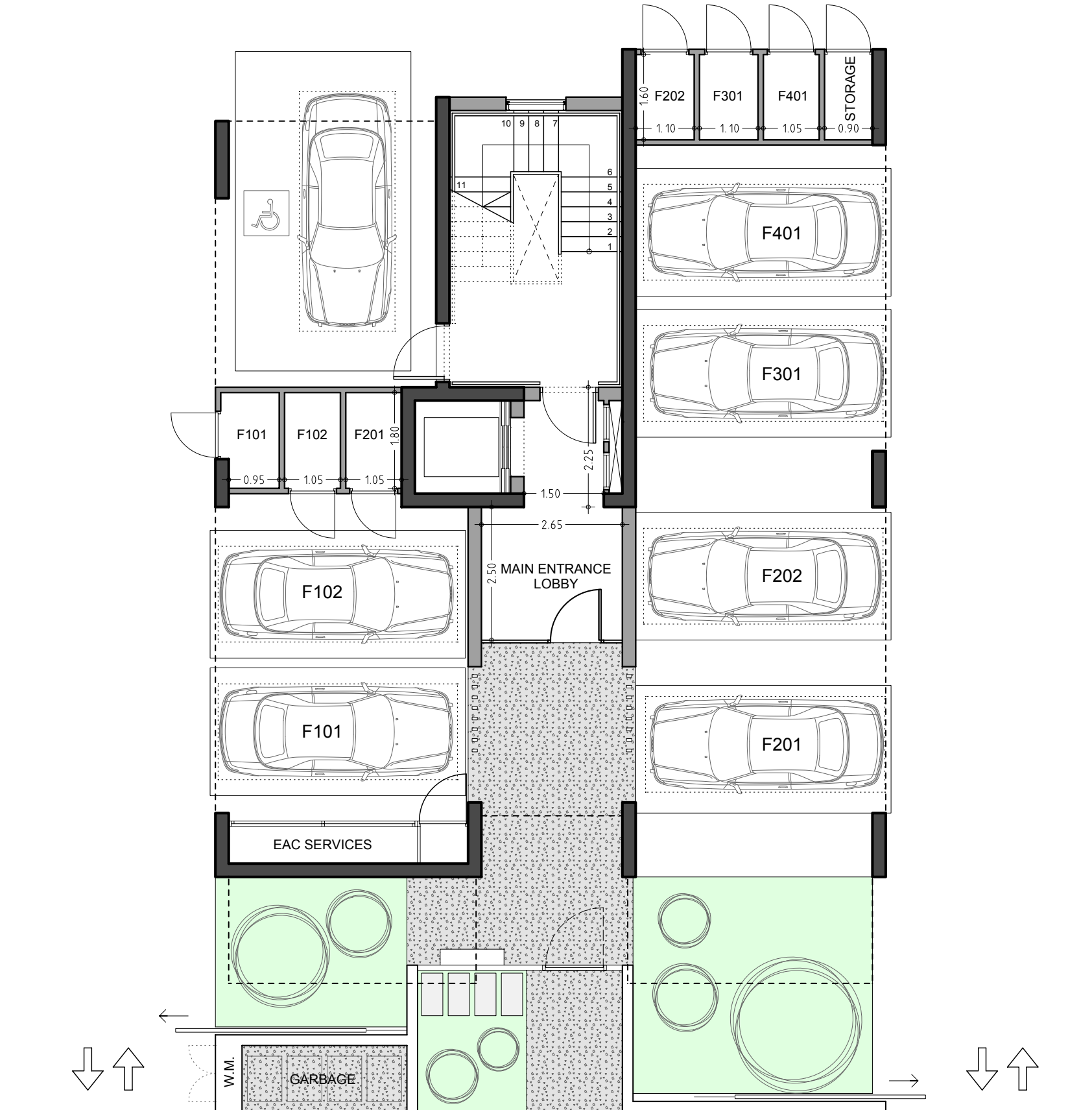
| NO  | FLOOR | TYPE      | BED-ROOMS | BATH-ROOMS | PRIV JAC-UZZI | PRIVATE POOL | PARK SPACES | PRIVATE INTERIOR M <sup>2</sup> | COV. VERANDA M <sup>2</sup> | AUXILIARY AREA M <sup>2</sup> | GARAGE AREA M <sup>2</sup> | ROOF TERRACE M <sup>2</sup> | STORAGE ON GROUND FLOOR M <sup>2</sup> | COMMON AREA PER UNIT M <sup>2</sup> | TOTAL AREA M <sup>2</sup> |
|-----|-------|-----------|-----------|------------|---------------|--------------|-------------|---------------------------------|-----------------------------|-------------------------------|----------------------------|-----------------------------|--|-------------------------------------|---------------------------|
| 101 | 1     | Apartment | 1         | 1          |               |              | 1           | 56.91                           | 14.05                       |                               | 11.52                      |                             | 2.50                                   | 14.94                               | 99.92                     |
| 102 | 1     | Apartment | 2         | 2          |               |              | 1           | 81.29                           | 12.91                       |                               | 11.52                      |                             | 2.30                                   | 19.83                               | 127.85                    |
| 201 | 2     | Apartment | 1         | 1          |               |              | 1           | 56.91                           | 14.05                       |                               | 11.52                      |                             | 2.45                                   | 14.94                               | 99.87                     |
| 202 | 2     | Apartment | 2         | 2          |               |              | 1           | 81.29                           | 12.91                       |                               | 11.52                      |                             | 1.97                                   | 19.83                               | 127.52                    |
| 301 | 3     | Apartment | 3         | 3          | yes           |              | 1           | 113.12                          | 57.55                       |                               | 11.52                      |                             | 1.86                                   | 35.93                               | 219.98                    |
| 401 | 4     | Penthouse | 3         | 4          |               | yes          | 1           | 118.66                          | 42.45                       | 35.08                         | 11.52                      | 61.04                       | 1.86                                   | 41.31                               | 311.92                    |

**NOTE:** the areas stated above may slightly differ upon issuance of relevant authority permits



\*All 3D images consist of indicative information and the project can differ insignificantly from the displayed images

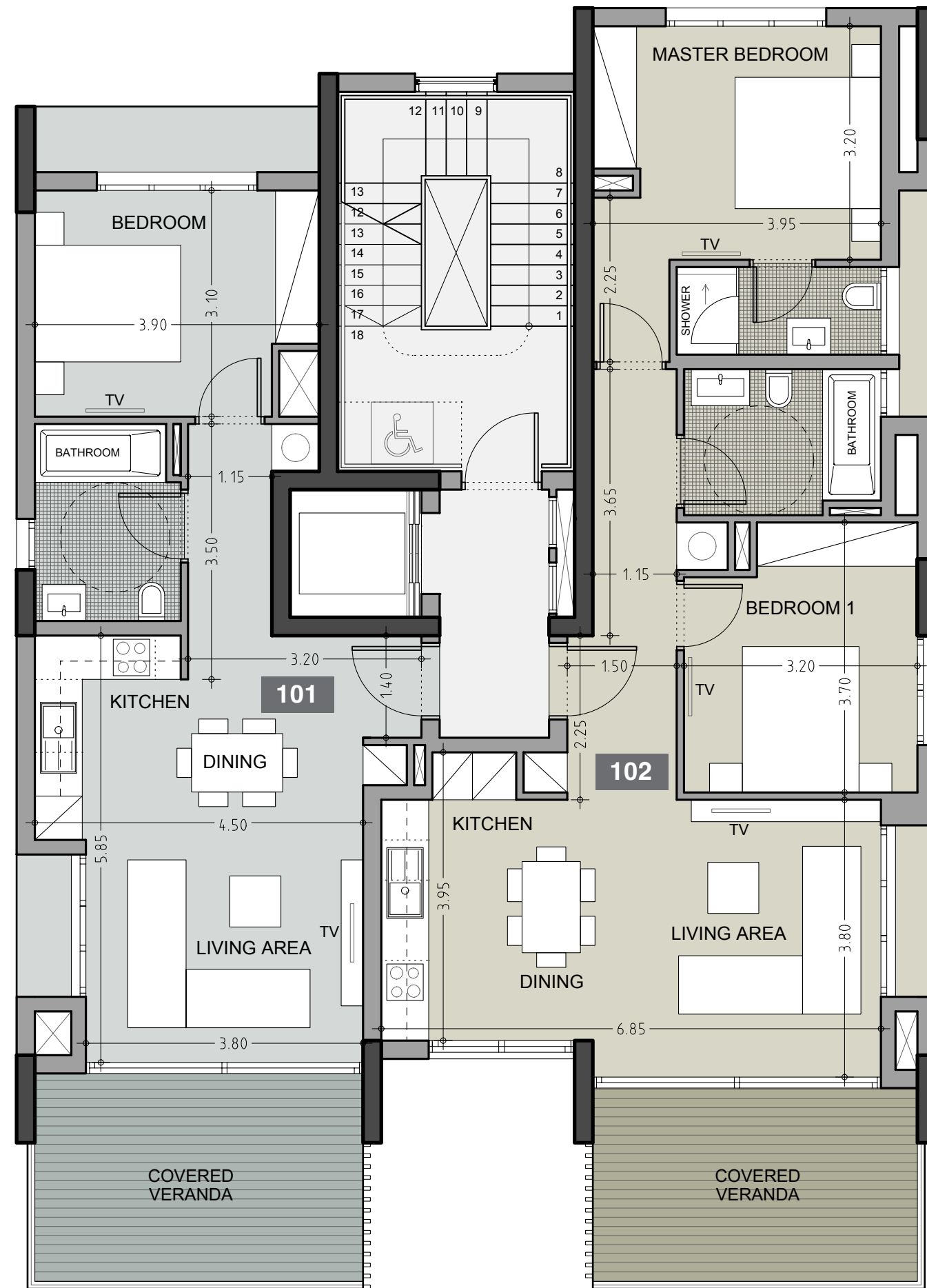
# GROUND FLOOR



\*Floor plans show approximate measurements only. The exact layout and sizes may vary

# FLOOR 01

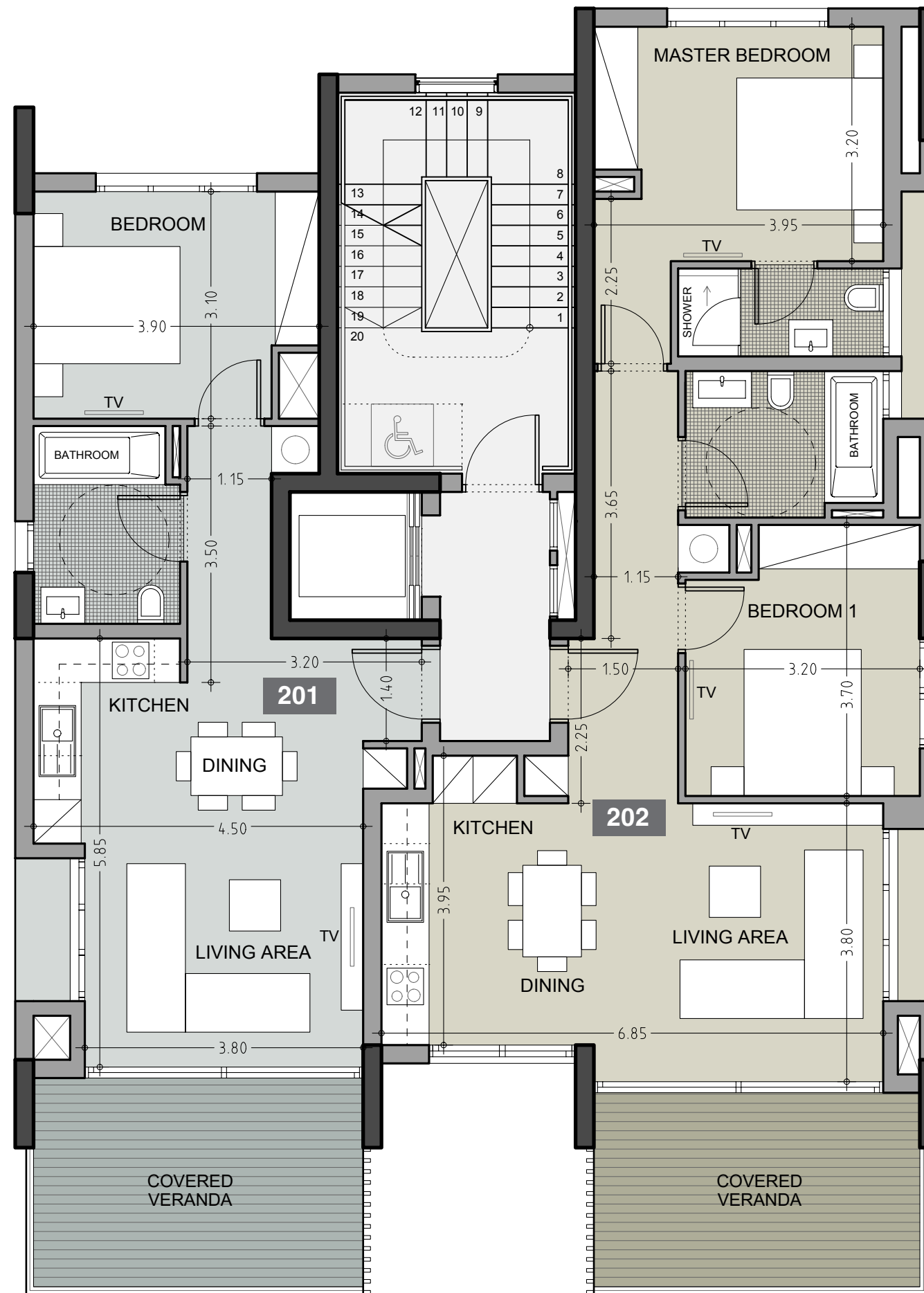
| Unit № | Total Area, m <sup>2</sup> |
|--------|----------------------------|
| ● 101  | 99.92                      |
| ● 102  | 127.85                     |



\*Floor plans show approximate measurements only. The exact layout and sizes may vary

# FLOOR 02

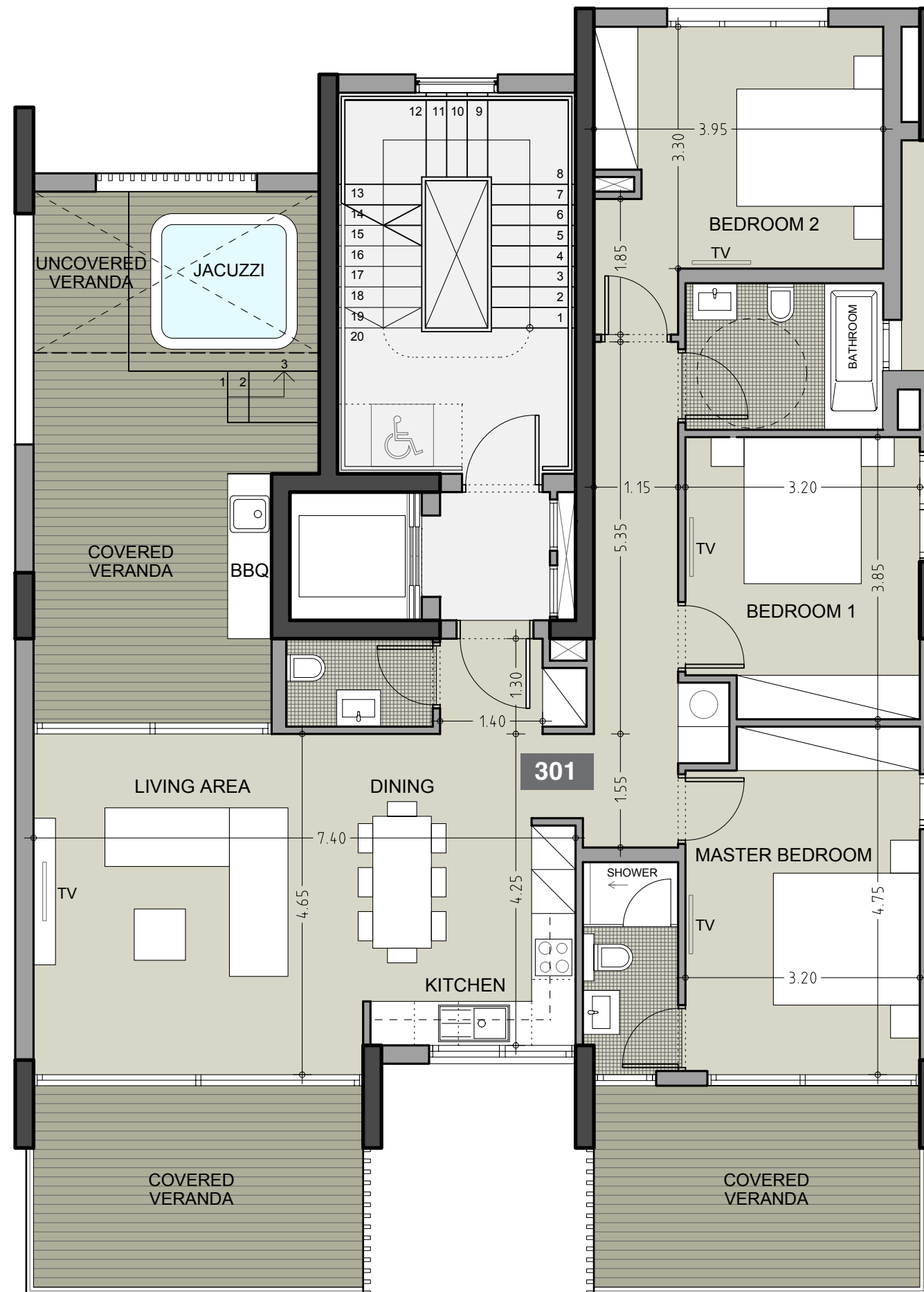
| Unit № | Total Area, m <sup>2</sup> |
|--------|----------------------------|
| ● 201  | 99.87                      |
| ● 202  | 127.52                     |



\*Floor plans show approximate measurements only. The exact layout and sizes may vary

# FLOOR 03

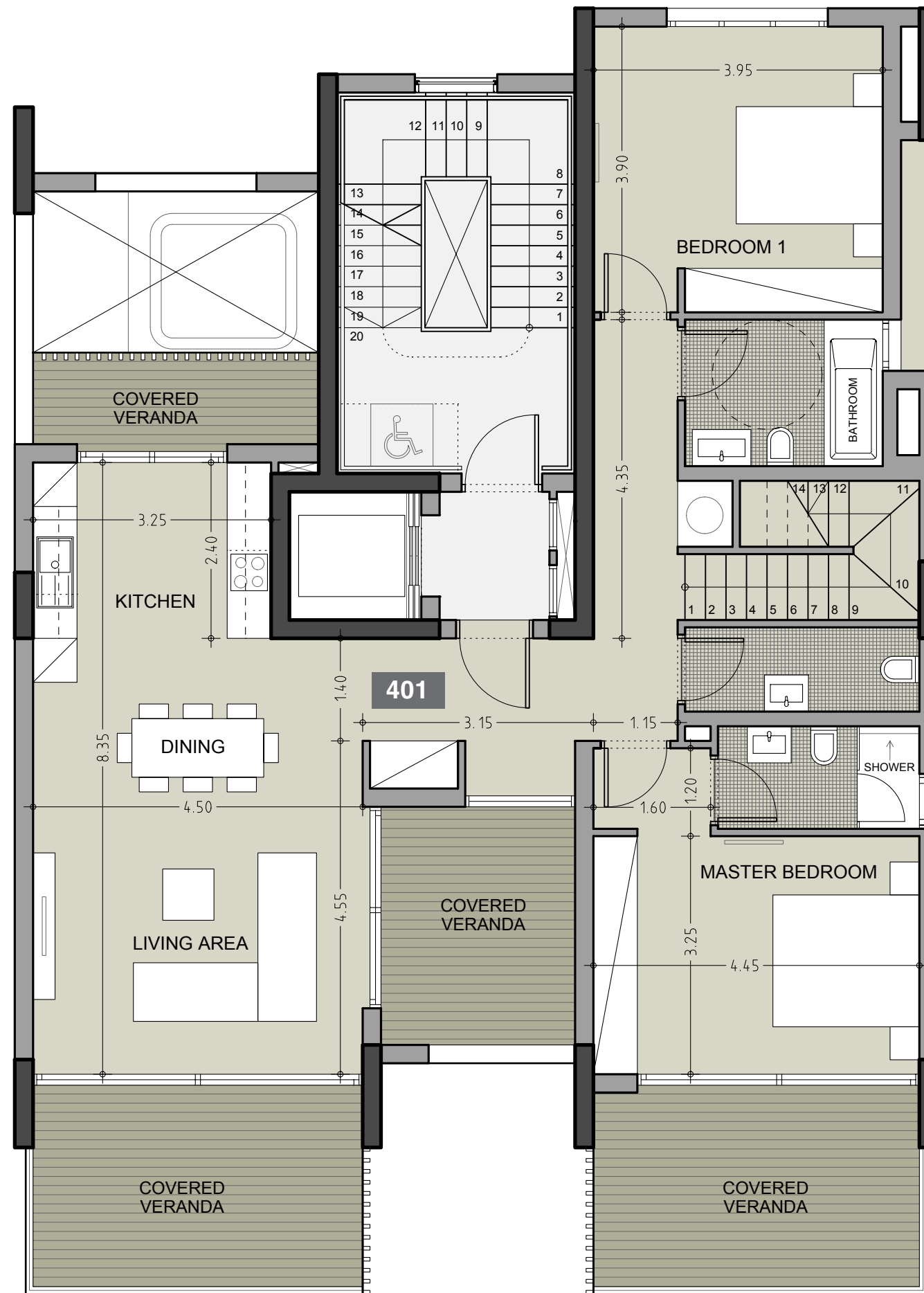
| Unit № | Total Area, m <sup>2</sup> |
|--------|----------------------------|
| 301    | 219.98                     |



\*Floor plans show approximate measurements only. The exact layout and sizes may vary

# FLOOR 04

| Unit № | Total Area, m <sup>2</sup> |
|--------|----------------------------|
| ● 401  | 311.92                     |

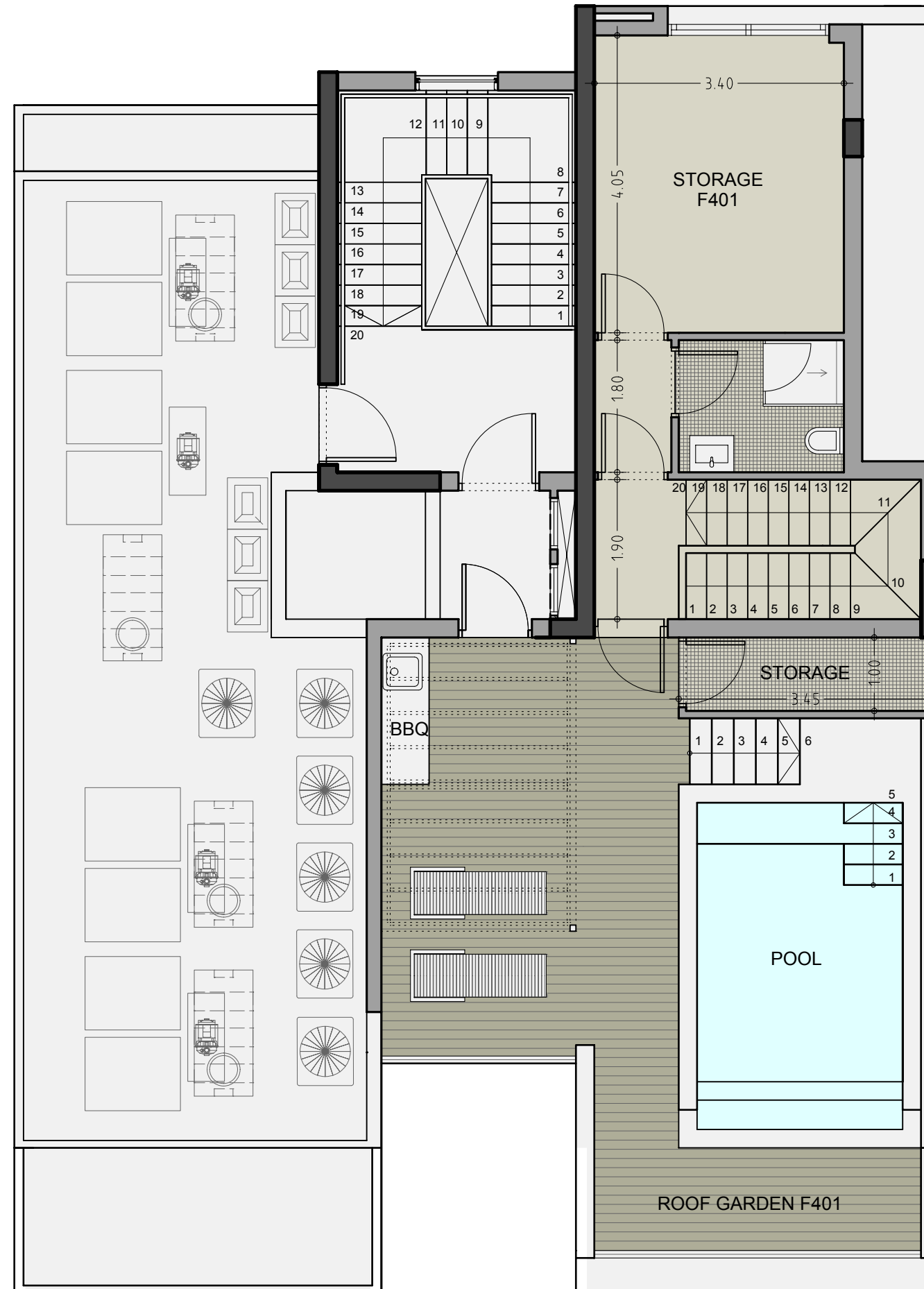


\*Floor plans show approximate measurements only. The exact layout and sizes may vary

# ROOF GARDEN



| Unit № | Total Area, m <sup>2</sup> |
|--------|----------------------------|
| ● 401  | 311.92                     |



\*Floor plans show approximate measurements only. The exact layout and sizes may vary



# SIGNATURE FINISHES

## ELEGANCE PACKAGE

EVERY PROPERTY IS DELIVERED WITH SIGNATURE TOP STANDARD FINISHES:

- | Fully completed finishings
- | Semisolid parquet floors in each room
- | Marble floor and walls in the toilets and bathrooms
- | High ceilings (3.15 m)
- | Security and fireproof entrance doors
- | Intercom system
- | Water heated floors
- | Central VRV conditioning
- | Highstandard sanitary ware from European brands
- | Thermal aluminum window frames with double glazing
- | High standard kitchen cabinets
- | High standard wardrobes from European brands
- | Soft closers for kitchen units
- | Penthouse enjoy private roof terrace with pool

**NOTE:** movable furniture, home appliances & interior items are extras



# SIGNATURE PENTHOUSES

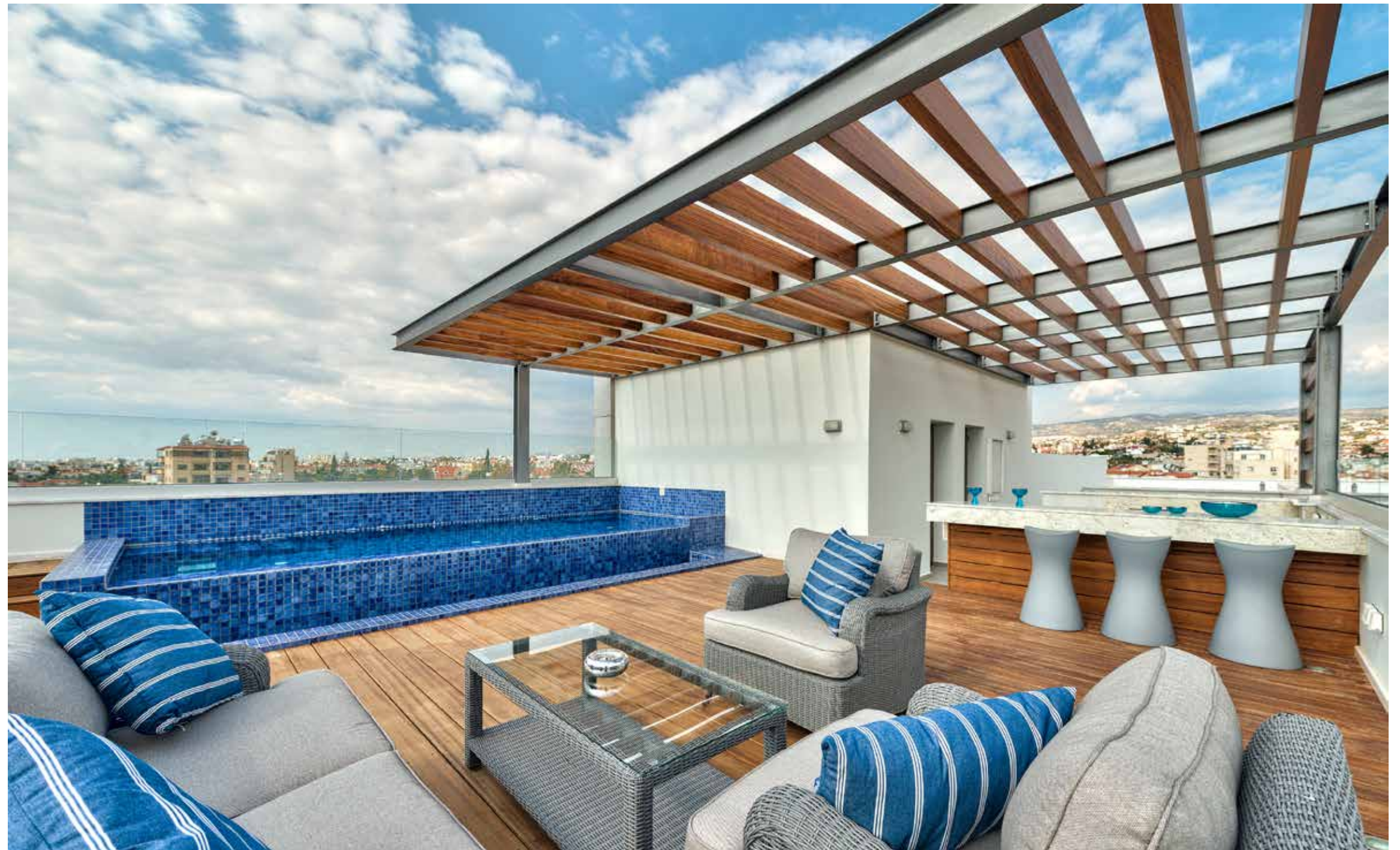
## WE HAVE REIMAGINED THE IDEA OF WHAT A PENTHOUSE SHOULD BE

The signature penthouses are featured almost in all apartment developments and represent the best choice for a demanding and sophisticated customer who expects the best of comfort, style and privacy.

### THE SIGNATURE PENTHOUSES:

- | Sizable roof space
- | Marble floors
- | Mosaic tiled swimming pool with jacuzzi
- | Barbecue

**NOTE:** movable furniture & interior items are extras



# IMMIGRATION OPPORTUNITIES

## PERMANENT RESIDENCE PERMIT

UNIQUE CYPRUS PERMANENT RESIDENCE FOR PROPERTY BUYERS

- | Lifelong validity
- | For all family members inc. children and parents
- | Possibility to own a business in Cyprus

The Cyprus Permanent Residence Program (PRP) grants the right to travel within the EU with less elaborate visa requirements and maybe the first step towards a successful application for the Cyprus Investment Programme. We offer an "A to Z" service for non-EU citizens seeking residence in Cyprus through of buying a property.

To be granted a lifelong (permanent) residence permit in Cyprus, the applicant needs to purchase a new residential property or two new properties from the same property development company at a total price of 300 000 Euros excluding VAT. At the time of submission of the application, 200 000 Euros (excluding VAT) must be transferred in the settlements of the property and the contract of sale must be registered at the Lands Office. The issuance of the Permanent Residence Permit takes approximately 2 months from the day of submission of all relevant documentation and covers all family members, including financially dependent children under 25 years old. The Cyprus Permanent Residence Permit allows the holder to stay in Cyprus all year round.





