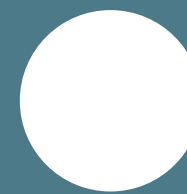
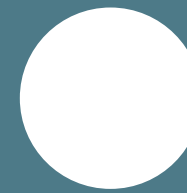




golfside



bbf:



:golfside

**A bridge between
a stretch
of sandy beaches
and a scenic
salt lake**

:golfside embodies the true essence of its name establishing a bridge between a stretch of sandy beaches and a scenic salt lake. The contemporary project is nestled in a quiet neighborhood surrounded by unspoiled nature and breathtaking sceneries, bringing together the coveted tranquility of suburban living and direct access to the vibrant urban landscape. The property redefines the standards of residential properties in the Mediterranean setting the stage for enhanced, healthy living.



**Internal amenities
including
sparkling
swimming pools,
fully equipped
gyms and sauna
facilities**

With an astounding 24 blocks comprising studios, one- and two-bedroom apartments, the gated project forms a grand-scale community that prioritizes comfort, exclusivity and security.

The contemporary architectural style of :golfside is conveyed through structured, clean lines and its sophisticated aesthetic is echoed in its premium class apartments where superior quality and fine materials meet modern comforts. Luxury amenities including sparkling swimming pools, fully equipped gyms and sauna facilities highlight the complex's focus on wellness while meticulously designed playgrounds promote an active family life.

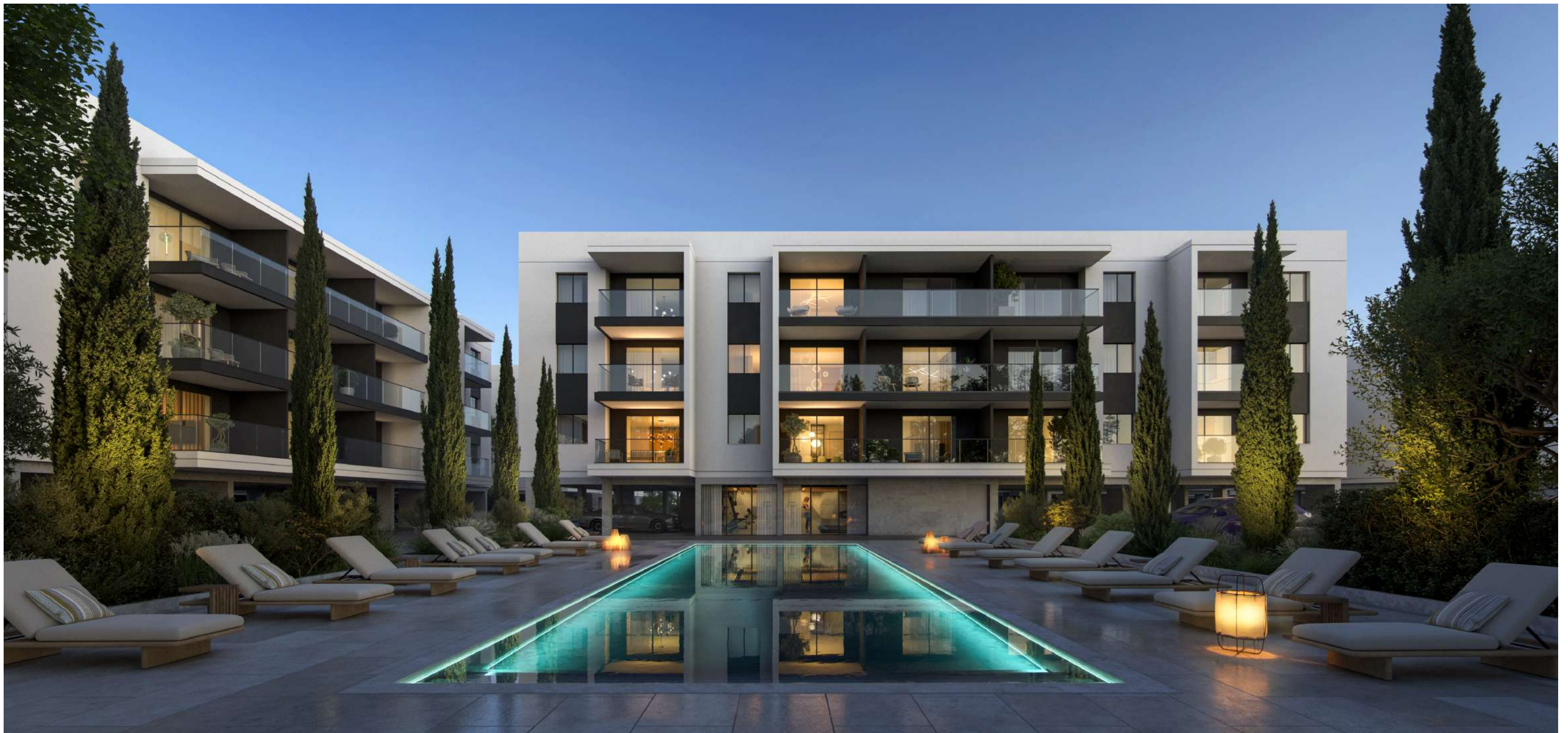
Situated in a prime location, the enviable project finds itself in the center of unparalleled natural beauty and at the crossroads of popular beaches, a lively seaside bar scene and the pulsating city center. Ensure you and your family experience the best of both worlds with a stunning apartment crafted to the highest standards or secure your own luxurious :golfside property for investment purposes.



major benefits

- Popular burgeoning Limassol suburb with convenience stores, tavernas and other amenities around the corner;
- Modern gated complex with swimming pools, gyms, saunas, covered parking and kids' playground;
- High-quality designer finishes included in the price;
- A newly built 18-hole golf course across the road;

- 6 minutes' drive to Cyprus' biggest casino resort "City of Dreams";
- 10 minutes' drive to the popular Lady's Mile beach;
- 6 minutes' drive to Limassol's biggest shopping and leisure mall;
- 15 minutes' drive to popular Ancient Kourion archaeological site;
- 15 minutes' drive to Cyprus' biggest yacht club - Limassol Marina;
- Great option for both rental yield investment and permanent living.



:location

Limassol

Dubbed the headquartering mecca for international businesses and known as a luxurious resort in the Mediterranean, Limassol has it all. Situated on the southern coast of the island of Cyprus, the city offers ample investment and employment opportunities and elite entertainment options setting an ideal backdrop for a balanced lifestyle promising a flourishing career trajectory and fun-filled days and nights. A warm climate, a rich cultural heritage, fine dining, award winning spas, world-class bars and clubs, await you.



Asomatos

Nestled in a quiet burgeoning residential area in Asomatos you will discover :golfside, the epitome of a contemporary community characterized by a unique design and outstanding quality offering a grand standard of living. The beautiful and tranquil natural surroundings set residents on a path toward health and wellness while the project's proximity to key city destinations ensures they remain truly connected to Limassol's busy and lively urban scene. The luxury resort and casino "City of Dreams", a large shopping mall, the popular Lady's Mile beach, the Limassol Marina, gourmet restaurants, luxury bars and the historic city center are but a short drive away, making the stay worthwhile.



◉ exterior

The ultimate environment for contemporary living

The welcoming yet striking complex accomplishes an impeccable balance that mirrors the landscape's natural beauty with a minimalist aesthetic. A host of internal amenities enhance day to day life creating the ultimate environment for contemporary living and a dynamic community for residents not just to live but to thrive in.



EU safety standards and fire department regulations

The premium-class development's earthquake resistant structure is designed to withstand seismic activity and fire-resistant features safeguard against unforeseen events. The property rigorously adheres to EU safety standards and fire department regulations fostering a sense of peace and calm among its residents.



• exterior



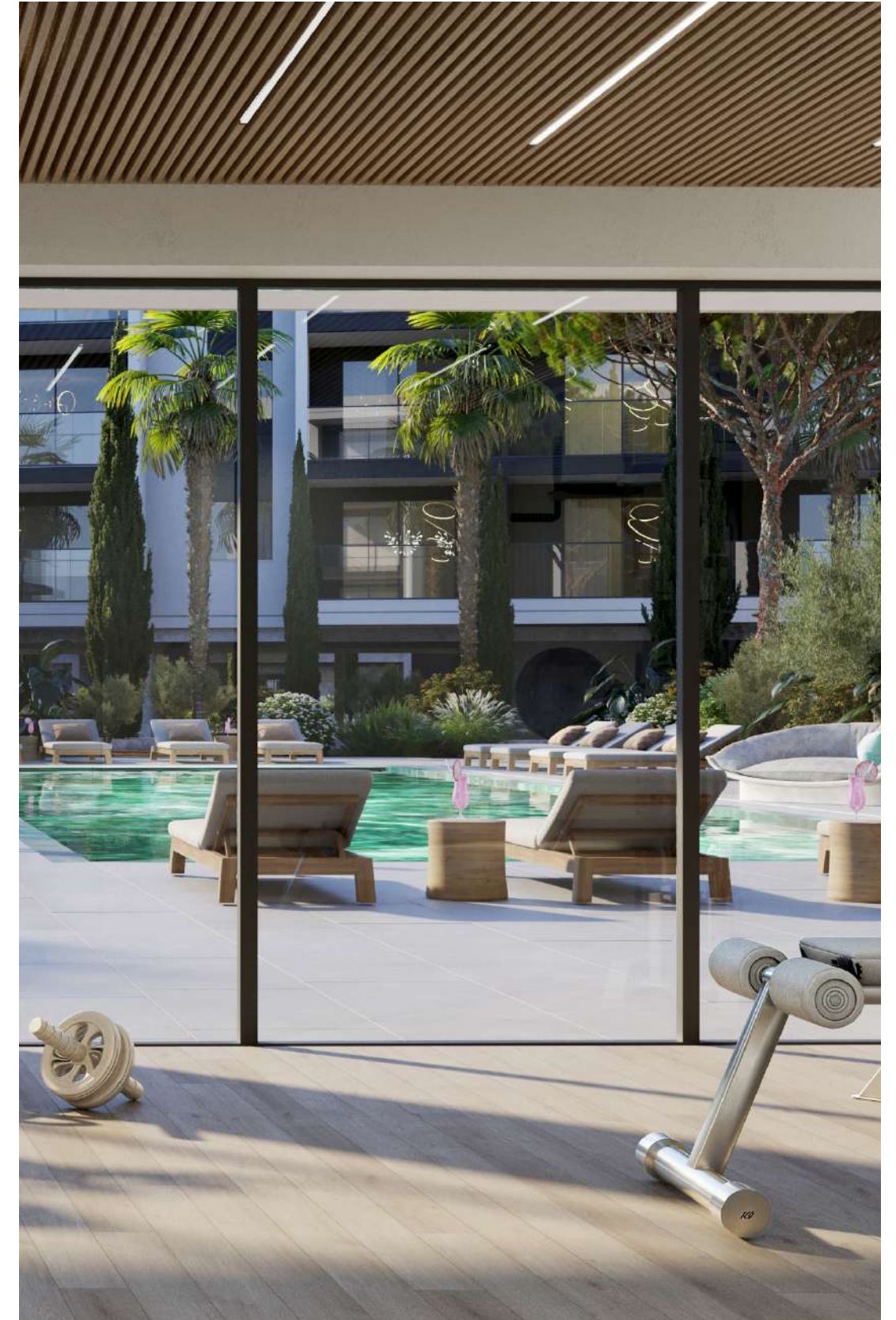
• residence facilities

- 4 internal gyms
- 3 kids playgrounds
- 3 swimming pools
- kids pool
- yoga room
- golf simulator

- sauna
- lounge
- play room & kids area
- multi-sport court
- landscape park
- co-working



• swimming pool



choice of properties

block G

FLOOR	UNIT N°	PROPERTY TYPE	BED ROOMS	BATH ROOMS	PARK SPACES	% OF COMMON AREA PER FLOOR	PRIVATE INTERIOR	COVERED VERANDA	SELLABLE AREA	COMMON AREA PER UNIT	TOTAL AREA
1st	G101	Apartment	1	1	1	5%	54.60	10.00	64.60	10.22	74.82
1st	G102	Apartment	1	1	1	5%	53.80	9.90	63.70	10.07	73.77
1st	G103	Apartment	2	2	1	8%	85.00	23.00	108.00	17.08	125.08
1st	G104	Apartment	1	1	1	5%	53.90	9.90	63.80	10.09	73.89
1st	G105	Apartment	1	1	1	5%	53.80	9.90	63.70	10.07	73.77
1st	G106	Apartment	1	1	1	5%	51.20	9.90	61.10	9.66	70.76
2nd	G201	Apartment	1	1	1	5%	54.60	10.00	64.60	10.22	74.82
2nd	G202	Apartment	1	1	1	5%	53.80	9.90	63.70	10.07	73.77
2nd	G203	Apartment	2	2	1	8%	85.00	23.00	108.00	17.08	125.08
2nd	G204	Apartment	1	1	1	5%	53.90	9.90	63.80	10.09	73.89
2nd	G205	Apartment	1	1	1	5%	53.80	9.90	63.70	10.07	73.77
2nd	G206	Apartment	1	1	1	5%	51.20	9.90	61.10	9.66	70.76
3rd	G301	Apartment	1	1	1	5%	54.60	10.00	64.60	10.22	74.82
3rd	G302	Apartment	1	1	1	5%	53.80	9.90	63.70	10.07	73.77
3rd	G303	Apartment	2	2	1	8%	85.00	23.00	108.00	17.08	125.08
3rd	G304	Apartment	1	1	1	5%	53.90	9.90	63.80	10.09	73.89
3rd	G305	Apartment	1	1	1	5%	53.80	9.90	63.70	10.07	73.77
3rd	G306	Apartment	1	1	1	5%	51.20	9.90	61.10	9.66	70.76

NOTE: the areas stated above may slightly differ upon issuance of relevant authority permits

block H

FLOOR	UNIT N°	PROPERTY TYPE	BED ROOMS	BATH ROOMS	PARK SPACES	% OF COMMON AREA PER FLOOR	PRIVATE INTERIOR	COVERED VERANDA	SELLABLE AREA	COMMON AREA PER UNIT	TOTAL AREA
1st	H101	Apartment	1	1	1	5%	54.60	10.00	64.60	10.22	74.82
1st	H102	Apartment	1	1	1	5%	53.80	9.90	63.70	10.07	73.77
1st	H103	Apartment	2	2	1	8%	85.00	23.00	108.00	17.08	125.08
1st	H104	Apartment	1	1	1	5%	53.90	9.90	63.80	10.09	73.89
1st	H105	Apartment	1	1	1	5%	53.80	9.90	63.70	10.07	73.77
1st	H106	Apartment	1	1	1	5%	51.20	9.90	61.10	9.66	70.76
2nd	H201	Apartment	1	1	1	5%	54.60	10.00	64.60	10.22	74.82
2nd	H202	Apartment	1	1	1	5%	53.80	9.90	63.70	10.07	73.77
2nd	H203	Apartment	2	2	1	8%	85.00	23.00	108.00	17.08	125.08
2nd	H204	Apartment	1	1	1	5%	53.90	9.90	63.80	10.09	73.89
2nd	H205	Apartment	1	1	1	5%	53.80	9.90	63.70	10.07	73.77
2nd	H206	Apartment	1	1	1	5%	51.20	9.90	61.10	9.66	70.76
3rd	H301	Apartment	1	1	1	5%	54.60	10.00	64.60	10.22	74.82
3rd	H302	Apartment	1	1	1	5%	53.80	9.90	63.70	10.07	73.77
3rd	H303	Apartment	2	2	1	8%	85.00	23.00	108.00	17.08	125.08
3rd	H304	Apartment	1	1	1	5%	53.90	9.90	63.80	10.09	73.89
3rd	H305	Apartment	1	1	1	5%	53.80	9.90	63.70	10.07	73.77
3rd	H306	Apartment	1	1	1	5%	51.20	9.90	61.10	9.66	70.76

NOTE: the areas stated above may slightly differ upon issuance of relevant authority permits

block I

FLOOR	UNIT N°	PROPERTY TYPE	BED ROOMS	BATH ROOMS	PARK SPACES	% OF COMMON AREA PER FLOOR	PRIVATE INTERIOR	COVERED VERANDA	SELLABLE AREA	COMMON AREA PER UNIT	TOTAL AREA
1st	I101	Apartment	1	1	1	5%	54.60	10.00	64.60	11.79	76.39
1st	I102	Apartment	1	1	1	5%	53.80	9.90	63.70	11.63	75.33
1st	I103	Apartment	2	2	1	8%	85.00	23.00	108.00	19.72	127.72
1st	I104	Apartment	1	1	1	5%	53.90	9.90	63.80	11.65	75.45
1st	I105	Apartment	1	1	1	5%	53.80	9.90	63.70	11.63	75.33
1st	I106	Apartment	1	1	1	5%	51.20	9.90	61.10	11.15	72.25
2nd	I201	Apartment	1	1	1	5%	54.60	10.00	64.60	11.79	76.39
2nd	I202	Apartment	1	1	1	5%	53.80	9.90	63.70	11.63	75.33
2nd	I203	Apartment	2	2	1	8%	85.00	23.00	108.00	19.72	127.72
2nd	I204	Apartment	1	1	1	5%	53.90	9.90	63.80	11.65	75.45
2nd	I205	Apartment	1	1	1	5%	53.80	9.90	63.70	11.63	75.33
2nd	I206	Apartment	1	1	1	5%	51.20	9.90	61.10	11.15	72.25
3rd	I301	Apartment	1	1	1	5%	54.60	10.00	64.60	11.79	76.39
3rd	I302	Apartment	1	1	1	5%	53.80	9.90	63.70	11.63	75.33
3rd	I303	Apartment	2	2	1	8%	85.00	23.00	108.00	19.72	127.72
3rd	I304	Apartment	1	1	1	5%	53.90	9.90	63.80	11.65	75.45
3rd	I305	Apartment	1	1	1	5%	53.80	9.90	63.70	11.63	75.33
3rd	I306	Apartment	1	1	1	5%	51.20	9.90	61.10	11.15	72.25

NOTE: the areas stated above may slightly differ upon issuance of relevant authority permits

block J

FLOOR	UNIT N°	PROPERTY TYPE	BED ROOMS	BATH ROOMS	PARK SPACES	% OF COMMON AREA PER FLOOR	PRIVATE INTERIOR	COVERED VERANDA	SELLABLE AREA	COMMON AREA PER UNIT	TOTAL AREA
1st	J101	Studio	Studio	1	1	3%	35.90	10.90	46.80	6.29	53.09
1st	J102	Apartment	2	2	1	6%	77.70	16.50	94.20	12.65	106.85
1st	J103	Apartment	1	1	1	4%	53.80	9.90	63.70	8.56	72.26
1st	L10J	Apartment	1	1	1	4%	50.20	10.10	60.30	8.10	68.40
1st	J105	Studio	Studio	1	1	3%	34.80	12.70	47.50	6.38	53.88
1st	J106	Apartment	1	1	1	4%	50.20	10.10	60.30	8.10	68.40
1st	J107	Apartment	1	1	1	4%	53.90	9.90	63.80	8.57	72.37
1st	J108	Apartment	1	1	1	4%	53.80	9.90	63.70	8.56	72.26
1st	J109	Apartment	1	1	1	4%	51.20	9.90	61.10	8.21	69.31
2nd	J201	Studio	Studio	1	1	3%	35.90	10.90	46.80	6.29	53.09
2nd	J202	Apartment	2	2	1	6%	77.70	16.50	94.20	12.65	106.85
2nd	J203	Apartment	1	1	1	4%	53.80	9.90	63.70	8.56	72.26
2nd	J204	Apartment	1	1	1	4%	50.20	10.10	60.30	8.10	68.40
2nd	J205	Studio	Studio	1	1	3%	34.80	12.70	47.50	6.38	53.88
2nd	J206	Apartment	1	1	1	4%	50.20	10.10	60.30	8.10	68.40
2nd	J207	Apartment	1	1	1	4%	53.90	9.90	63.80	8.57	72.37
2nd	J208	Apartment	1	1	1	4%	53.80	9.90	63.70	8.56	72.26
2nd	J209	Apartment	1	1	1	4%	51.20	9.90	61.10	8.21	69.31
3rd	J301	Studio	Studio	1	1	3%	35.90	10.90	46.80	6.29	53.09
3rd	J302	Apartment	2	2	1	6%	77.70	16.50	94.20	12.65	106.85
3rd	J303	Apartment	1	1	1	4%	53.80	9.90	63.70	8.56	72.26
3rd	J304	Apartment	1	1	1	4%	50.20	10.10	60.30	8.10	68.40
3rd	J305	Studio	Studio	1	1	3%	34.80	12.70	47.50	6.38	53.88
3rd	J306	Apartment	1	1	1	4%	50.20	10.10	60.30	8.10	68.40
3rd	J307	Apartment	1	1	1	4%	53.90	9.90	63.80	8.57	72.37
3rd	J308	Apartment	1	1	1	4%	53.80	9.90	63.70	8.56	72.26
3rd	J309	Apartment	1	1	1	4%	51.20	9.90	61.10	8.21	69.31

NOTE: the areas stated above may slightly differ upon issuance of relevant authority permits

choice of properties

block K

FLOOR	UNIT N°	PROPERTY TYPE	BED ROOMS	BATH ROOMS	PARK SPACES	% OF COMMON AREA PER FLOOR	PRIVATE INTERIOR	COVERED VERANDA	SELLABLE AREA	COMMON AREA PER UNIT	TOTAL AREA
1st	K101	Studio	Studio	1	1	3%	35.90	10.90	46.80	6.29	53.09
1st	K102	Apartment	2	2	1	6%	77.70	16.50	94.20	12.65	106.85
1st	K103	Apartment	1	1	1	4%	53.80	9.90	63.70	8.56	72.26
1st	K104	Apartment	1	1	1	4%	50.20	10.10	60.30	8.10	68.40
1st	K105	Studio	Studio	1	1	3%	34.80	12.70	47.50	6.38	53.88
1st	K106	Apartment	1	1	1	4%	50.20	10.10	60.30	8.10	68.40
1st	K107	Apartment	1	1	1	4%	53.90	9.90	63.80	8.57	72.37
1st	K108	Apartment	1	1	1	4%	53.80	9.90	63.70	8.56	72.26
1st	K109	Apartment	1	1	1	4%	51.20	9.90	61.10	8.21	69.31
2nd	K201	Studio	Studio	1	1	3%	35.90	10.90	46.80	6.29	53.09
2nd	K202	Apartment	2	2	1	6%	77.70	16.50	94.20	12.65	106.85
2nd	K203	Apartment	1	1	1	4%	53.80	9.90	63.70	8.56	72.26
2nd	K204	Apartment	1	1	1	4%	50.20	10.10	60.30	8.10	68.40
2nd	K205	Studio	Studio	1	1	3%	34.80	12.70	47.50	6.38	53.88
2nd	K206	Apartment	1	1	1	4%	50.20	10.10	60.30	8.10	68.40
2nd	K207	Apartment	1	1	1	4%	53.90	9.90	63.80	8.57	72.37
2nd	K208	Apartment	1	1	1	4%	53.80	9.90	63.70	8.56	72.26
2nd	K209	Apartment	1	1	1	4%	51.20	9.90	61.10	8.21	69.31
3rd	K301	Studio	Studio	1	1	3%	35.90	10.90	46.80	6.29	53.09
3rd	K302	Apartment	2	2	1	6%	77.70	16.50	94.20	12.65	106.85
3rd	K303	Apartment	1	1	1	4%	53.80	9.90	63.70	8.56	72.26
3rd	K304	Apartment	1	1	1	4%	50.20	10.10	60.30	8.10	68.40
3rd	K305	Studio	Studio	1	1	3%	34.80	12.70	47.50	6.38	53.88
3rd	K306	Apartment	1	1	1	4%	50.20	10.10	60.30	8.10	68.40
3rd	K307	Apartment	1	1	1	4%	53.90	9.90	63.80	8.57	72.37
3rd	K308	Apartment	1	1	1	4%	53.80	9.90	63.70	8.56	72.26
3rd	K309	Apartment	1	1	1	4%	51.20	9.90	61.10	8.21	69.31

NOTE: the areas stated above may slightly differ upon issuance of relevant authority permits

block L

FLOOR	UNIT N°	PROPERTY TYPE	BED ROOMS	BATH ROOMS	PARK SPACES	% OF COMMON AREA PER FLOOR	PRIVATE INTERIOR	COVERED VERANDA	SELLABLE AREA	COMMON AREA PER UNIT	TOTAL AREA
1st	L101	Studio	Studio	1	1	3%	35.90	10.90	46.80	6.29	53.09
1st	L102	Apartment	2	2	1	6%	77.70	16.50	94.20	12.65	106.85
1st	L103	Apartment	1	1	1	4%	53.80	9.90	63.70	8.56	72.26
1st	L104	Apartment	1	1	1	4%	50.20	10.10	60.30	8.10	68.40
1st	L105	Studio	Studio	1	1	3%	34.80	12.70	47.50	6.38	53.88
1st	L106	Apartment	1	1	1	4%	50.20	10.10	60.30	8.10	68.40
1st	L107	Apartment	1	1	1	4%	53.90	9.90	63.80	8.57	72.37
1st	L108	Apartment	1	1	1	4%	53.80	9.90	63.70	8.56	72.26
1st	L109	Apartment	1	1	1	4%	51.20	9.90	61.10	8.21	69.31
2nd	L201	Studio	1	1	1	3%	35.90	10.90	46.80	6.29	53.09
2nd	L202	Apartment	2	2	1	6%	77.70	16.50	94.20	12.65	106.85
2nd	L203	Apartment	1	1	1	4%	53.80	9.90	63.70	8.56	72.26
2nd	L204	Apartment	1	1	1	4%	50.20	10.10	60.30	8.10	68.40
2nd	L205	Studio	Studio	1	1	3%	34.80	12.70	47.50	6.38	53.88
2nd	L206	Apartment	2	2	1	4%	50.20	10.10	60.30	8.10	68.40
2nd	L207	Apartment	1	1	1	4%	53.90	9.90	63.80	8.57	72.37
2nd	L208	Apartment	1	1	1	4%	53.80	9.90	63.70	8.56	72.26
2nd	L209	Apartment	1	1	1	4%	51.20	9.90	61.10	8.21	69.31
3rd	L301	Studio	Studio	1	1	3%	35.90	10.90	46.80	6.29	53.09
3rd	L302	Apartment	2	1	1	6%	77.70	16.50	94.20	12.65	106.85
3rd	L303	Apartment	1	1	1	4%	53.80	9.90	63.70	8.56	72.26
3rd	L304	Apartment	1	1	1	4%	50.20	10.10	60.30	8.10	68.40
3rd	L305	Studio	Studio	1	1	3%	34.80	12.70	47.50	6.38	53.88
3rd	L306	Apartment	1	1	1	4%	50.20	10.10	60.30	8.10	68.40
3rd	L307	Apartment	1	1	1	4%	53.90	9.90	63.80	8.57	72.37
3rd	L308	Apartment	1	1	1	4%	53.80	9.90	63.70	8.56	72.26
3rd	L309	Apartment	1	1	1	4%	51.20	9.90	61.10	8.21	69.31

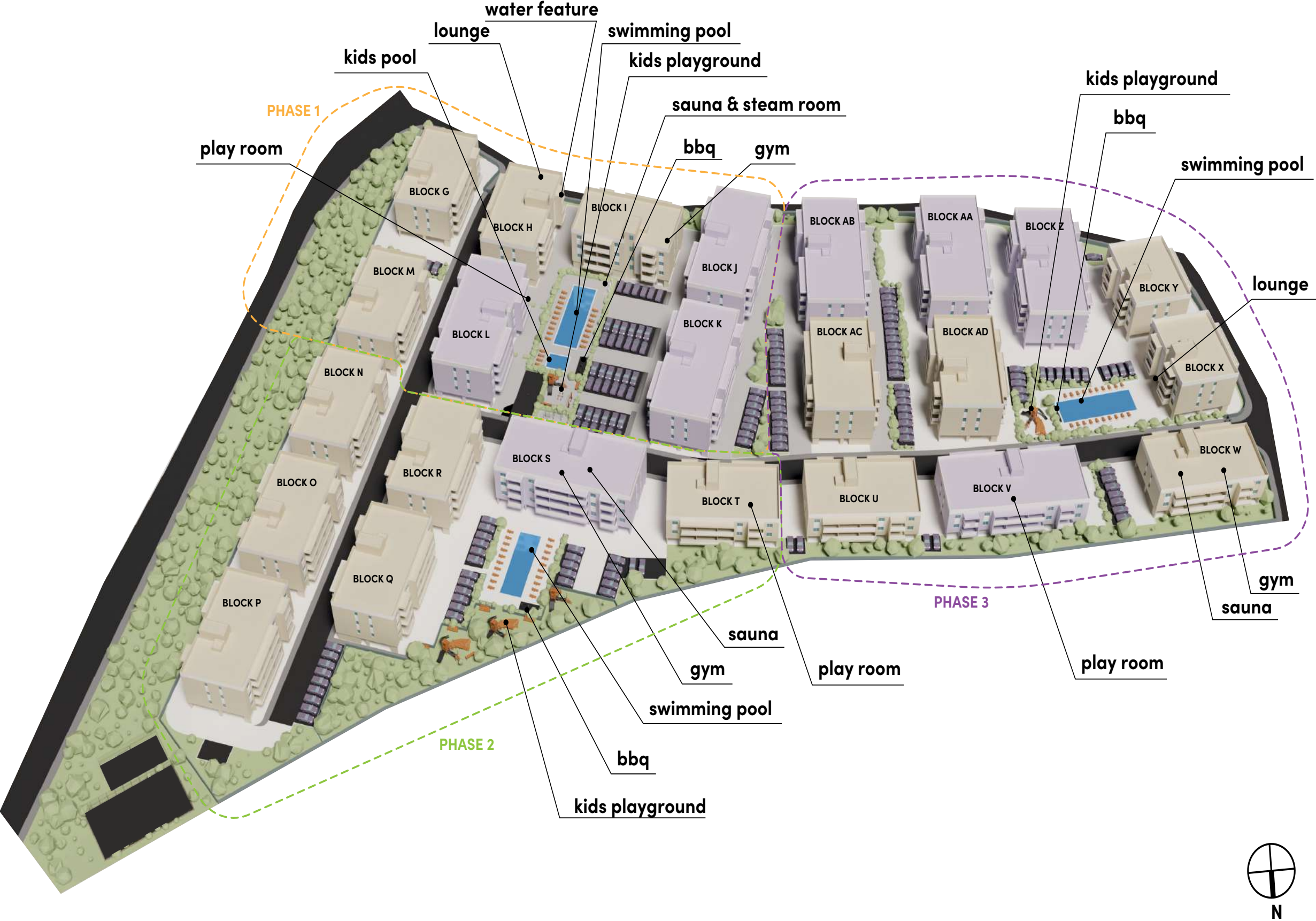
NOTE: the areas stated above may slightly differ upon issuance of relevant authority permits

block M

FLOOR	UNIT N°	PROPERTY TYPE	BED ROOMS	BATH ROOMS	PARK SPACES	% OF COMMON AREA PER FLOOR	PRIVATE INTERIOR	COVERED VERANDA	SELLABLE AREA	COMMON AREA PER UNIT	TOTAL AREA
1st	M101	Apartment	1	1	1	5%	54.60	10.00	64.60	10.22	74.82
1st	M102	Apartment	1	1	1	5%	53.80	9.90	63.70	10.07	73.77
1st	M103	Apartment	2	2	1	8%	85.00	23.00	108.00	17.08	125.08
1st	M104	Apartment	1	1	1	5%	53.90	9.90	63.80	10.09	73.89
1st	M105	Apartment	1	1	1	5%	53.80	9.90	63.70	10.07	73.77
1st	M106	Apartment	1	1	1	5%	51.20	9.90	61.10	9.66	70.76
2nd	M201	Apartment	1	1	1	5%	55.60	10.00	64.60	10.22	74.82
2nd	M202	Apartment	1	1	1	5%	53.80	9.90	63.70	10.07	73.77
2nd	M203	Apartment	2	2	1	8%	85.00	23.00	108.00	17.08	125.08
2nd	M204	Apartment	1	1	1	5%	53.90	9.90	63.80	10.09	73.89
2nd	M205	Apartment	1	1	1	5%	53.80	9.90	63.70	10.07	73.77
2nd	M206	Apartment	1	1	1	5%	51.20	9.90	61.10	9.66	70.76
2nd	M301	Apartment	1	1	1	5%	54.60	10.00	64.60	10.22	74.82
3rd	M302	Apartment	1	1	1	5%	53.80	9.90	63.70	10.07	73.77
3rd	M303	Apartment	2	2	1	8%	85.00	23.00	108.00	17.08	125.08
3rd	M304	Apartment	1	1	1	5%	53.90	9.90	63.80	10.09	73.89
3rd	M305	Apartment	1	1	1	5%	53.80	9.90	63.70	10.07	73.77
3rd	M306	Apartment	1	1	1	5%	51.20	9.90	61.10	9.66	70.76

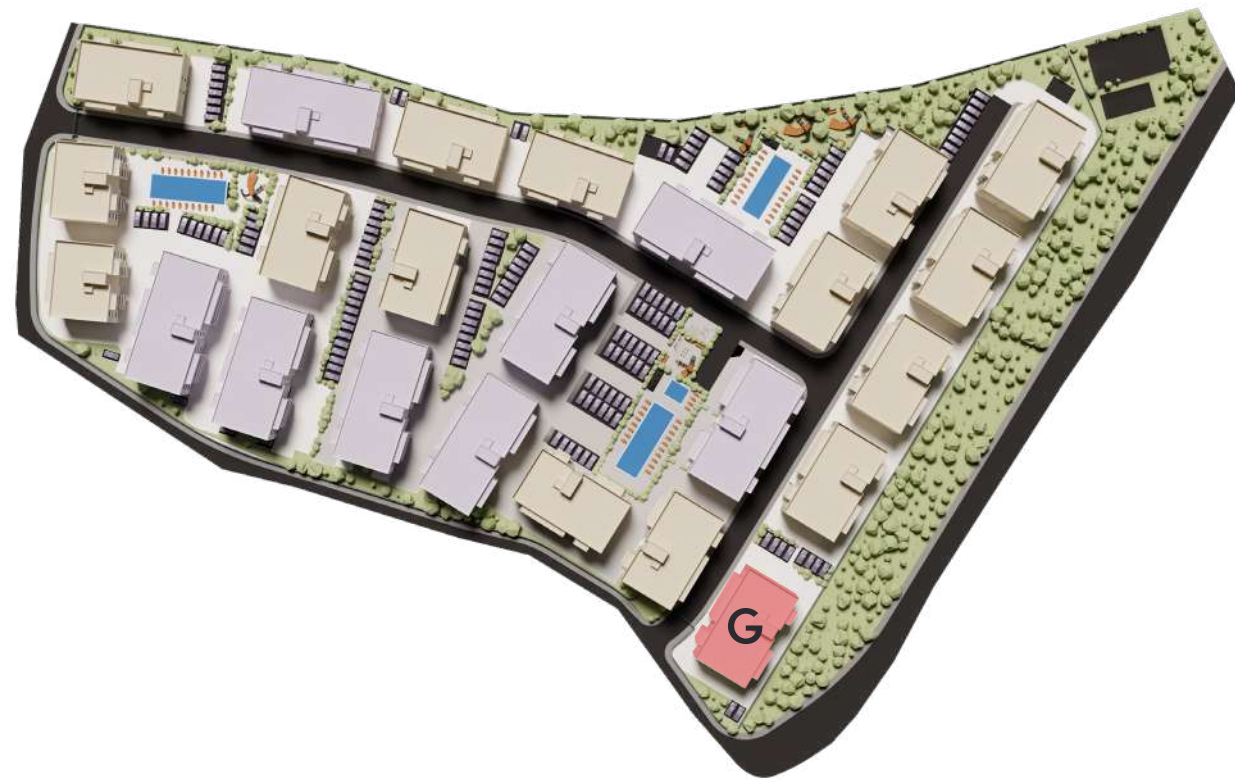
NOTE: the areas stated above may slightly differ upon issuance of relevant authority permits

masterplan



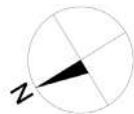
• masterplan

block G



plans

block G
1st floor



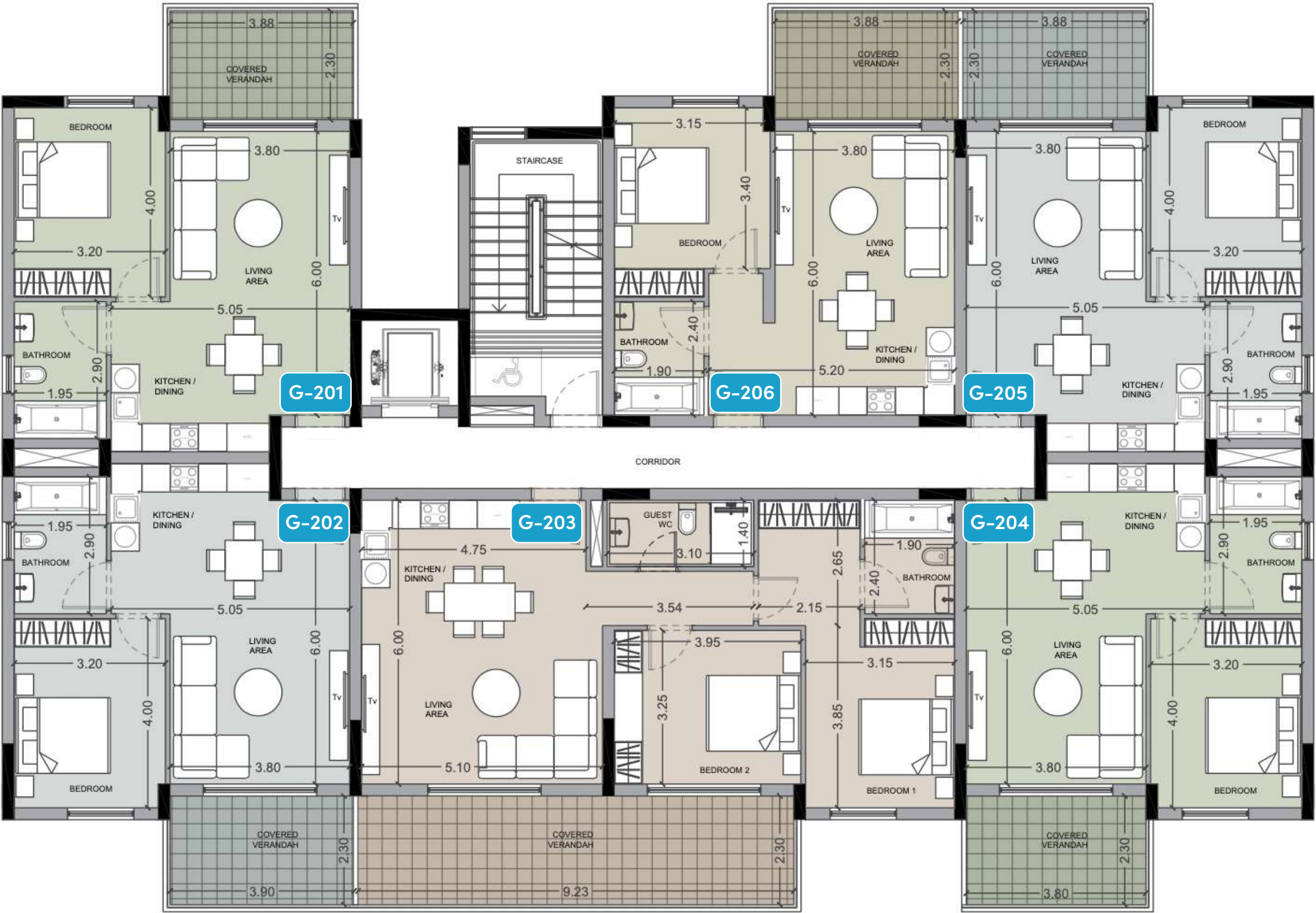
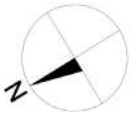
UNIT N°	TOTAL AREA M2
G101	74.82
G102	73.77
G103	125.08
G104	73.89
G105	73.77
G106	70.76

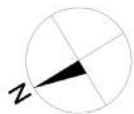


plans

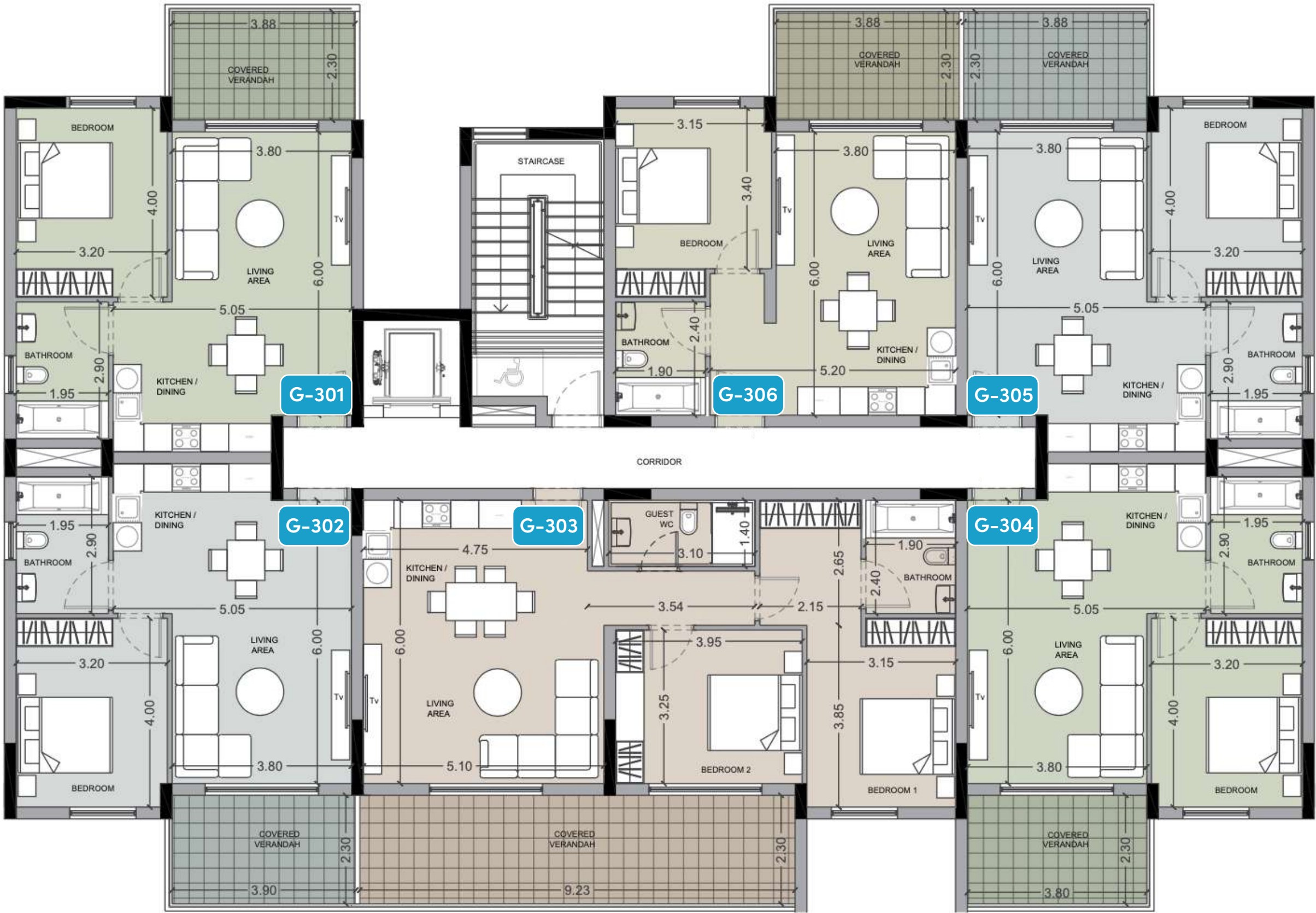
block G
2nd floor

UNIT N°	TOTAL AREA M2
G201	74.82
G202	73.77
G203	125.08
G204	73.89
G205	73.77
G206	70.76





UNIT N°	TOTAL AREA M2
G301	74.82
G302	73.77
G303	125.08
G304	73.89
G305	73.77
G306	70.76



• masterplan

block H





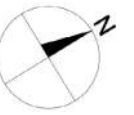
UNIT N°	TOTAL AREA M2
H101	74.82
H102	73.77
H103	125.08
H104	73.89
H105	73.77
H106	70.76





UNIT N°	TOTAL AREA M2
H201	74.82
H202	73.77
H203	125.08
H204	73.89
H205	73.77
H206	70.76





This floor plan illustrates a four-unit residential building, labeled H-301 through H-304, arranged around a central corridor. Each unit is color-coded: H-301 (green), H-302 (blue), H-303 (orange), and H-304 (green). The plan includes detailed room layouts, furniture placement, and precise dimensions in meters.

Unit H-301 (Top Left): Features a bedroom (3.20 x 4.00), a living area (3.80 x 6.00) with a TV, a kitchen/dining area (5.05 x 2.90), a bathroom (1.95 x 2.90), and a covered verandah (3.88 x 2.30).

Unit H-302 (Bottom Left): Features a bedroom (3.20 x 4.00), a living area (3.80 x 6.00) with a TV, a kitchen/dining area (5.05 x 2.90), a bathroom (1.95 x 2.90), and a covered verandah (3.90 x 2.30).

Unit H-303 (Top Middle): Features a bedroom (3.15 x 3.40), a living area (3.80 x 6.00) with a TV, a kitchen/dining area (5.20 x 2.40), a bathroom (1.90 x 2.40), a guest WC (1.40 x 1.40), and a covered verandah (3.88 x 2.30).

Unit H-304 (Bottom Middle): Features a bedroom (3.85 x 3.15), a living area (3.80 x 6.00) with a TV, a kitchen/dining area (5.05 x 2.90), a bathroom (1.90 x 2.40), a guest WC (1.40 x 1.40), and a covered verandah (3.80 x 2.30).

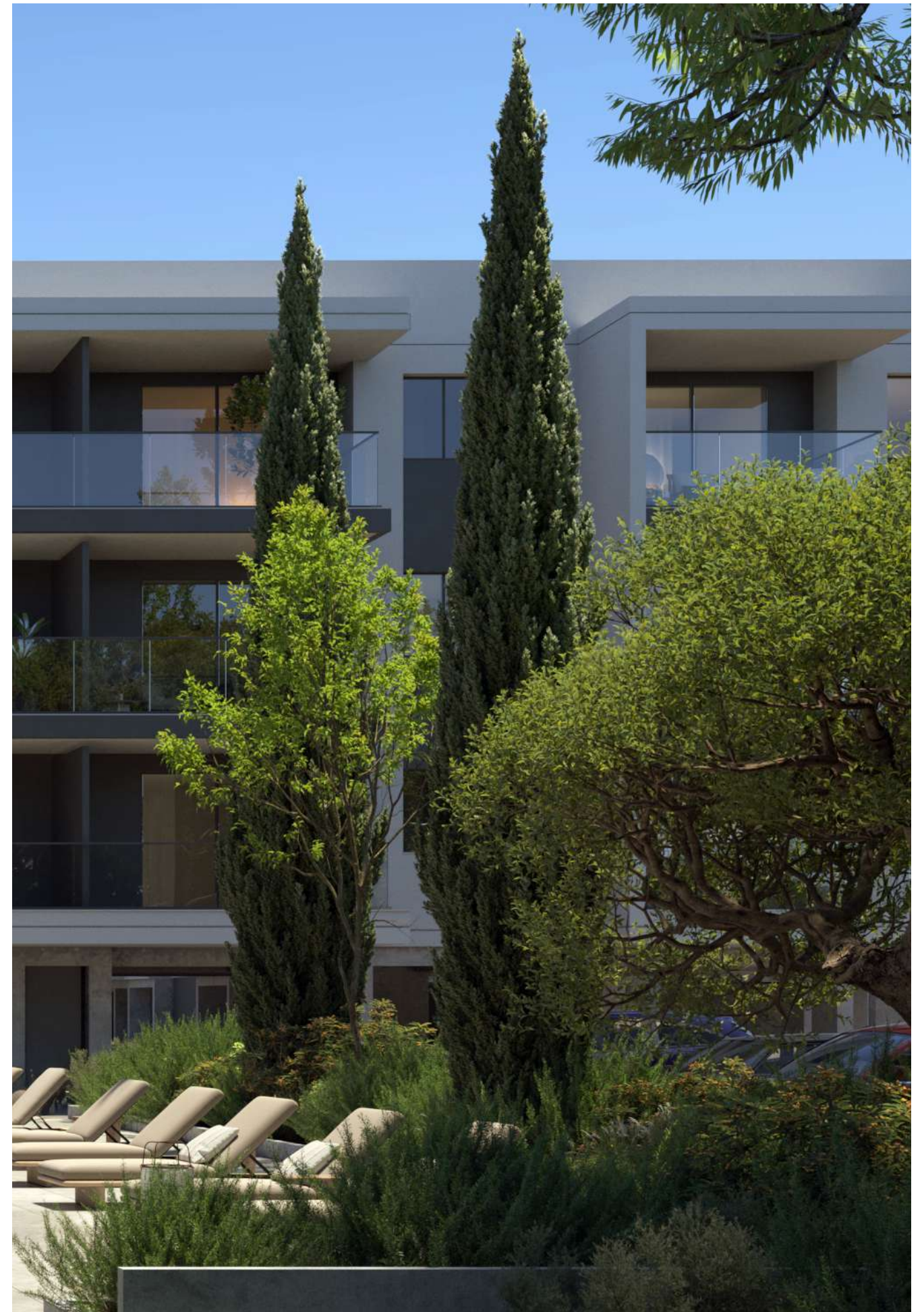
Unit H-305 (Top Right): Features a bedroom (3.20 x 4.00), a living area (3.80 x 6.00) with a TV, a kitchen/dining area (5.05 x 2.90), a bathroom (1.95 x 2.90), and a covered verandah (3.88 x 2.30).

Unit H-306 (Bottom Right): Features a bedroom (3.20 x 4.00), a living area (3.80 x 6.00) with a TV, a kitchen/dining area (5.05 x 2.90), a bathroom (1.95 x 2.90), and a covered verandah (3.88 x 2.30).

Common Areas: A central corridor provides access to all units. A staircase is located between units H-301 and H-303. A wheelchair symbol is placed near the staircase, indicating accessibility. The plan also shows various storage areas and utility spaces.

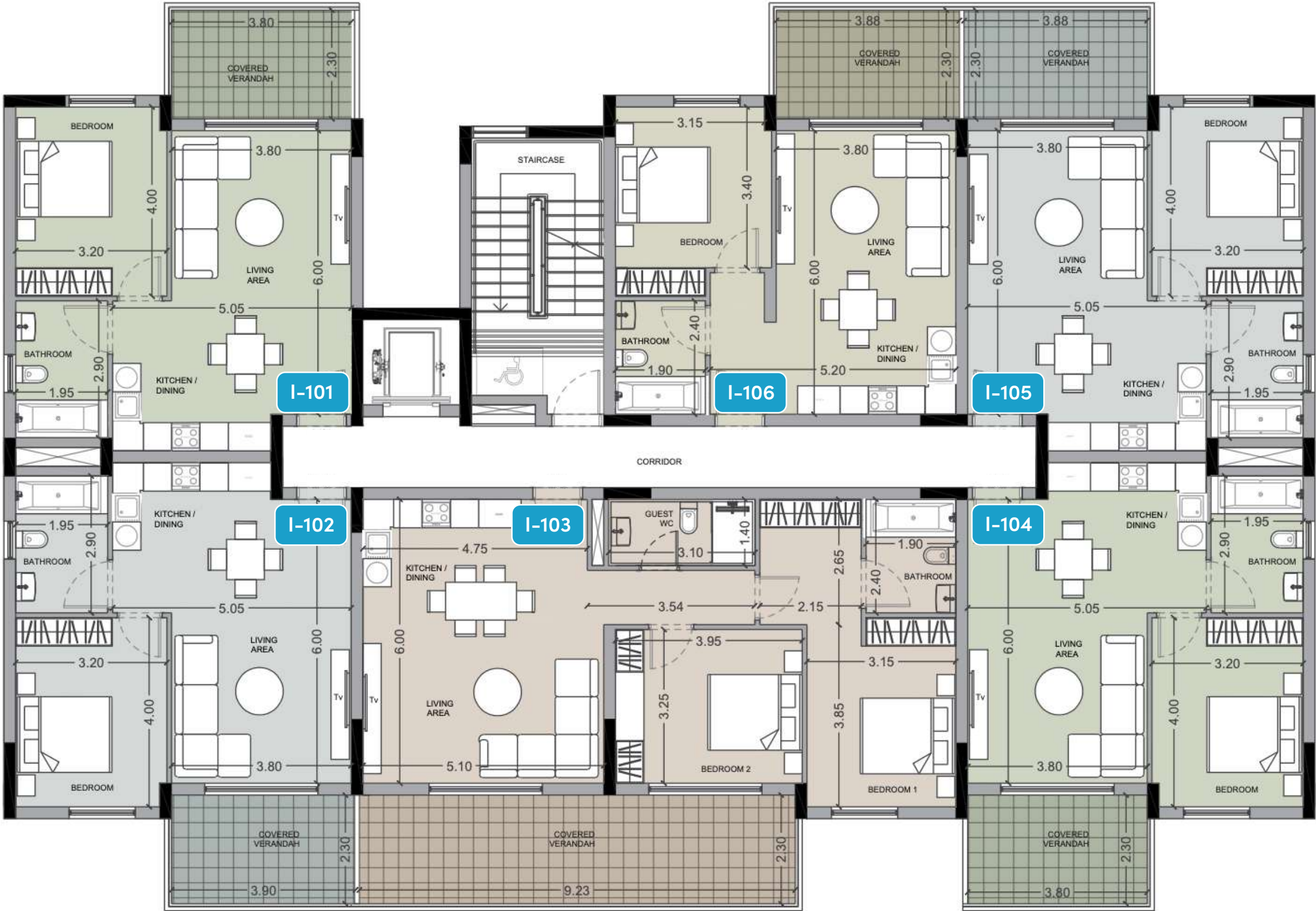
masterplan

block I





UNIT N°	TOTAL AREA M2
I101	76.39
I102	75.33
I103	127.72
I104	75.45
I105	75.33
I106	72.25

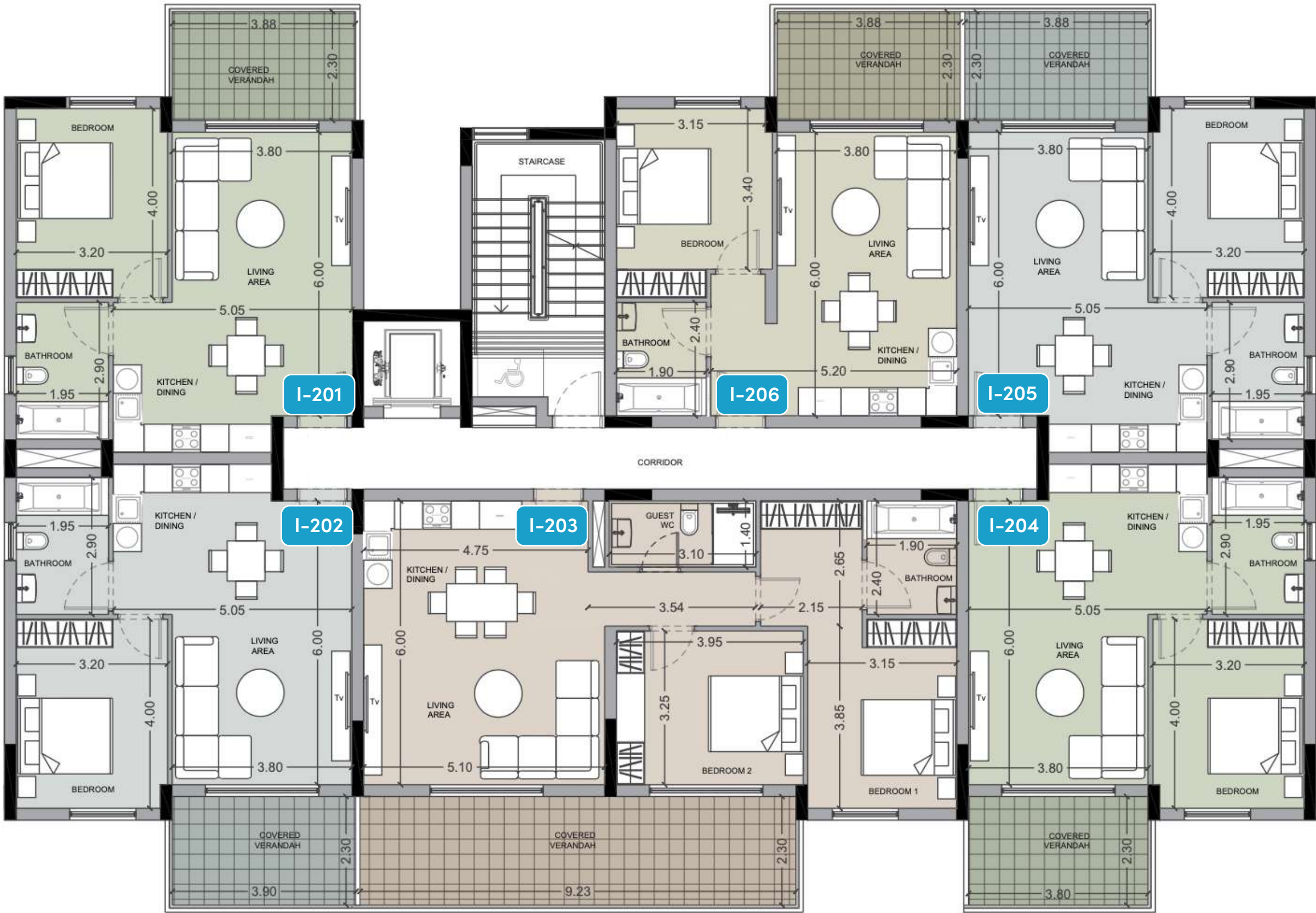


plans

block I
2nd floor

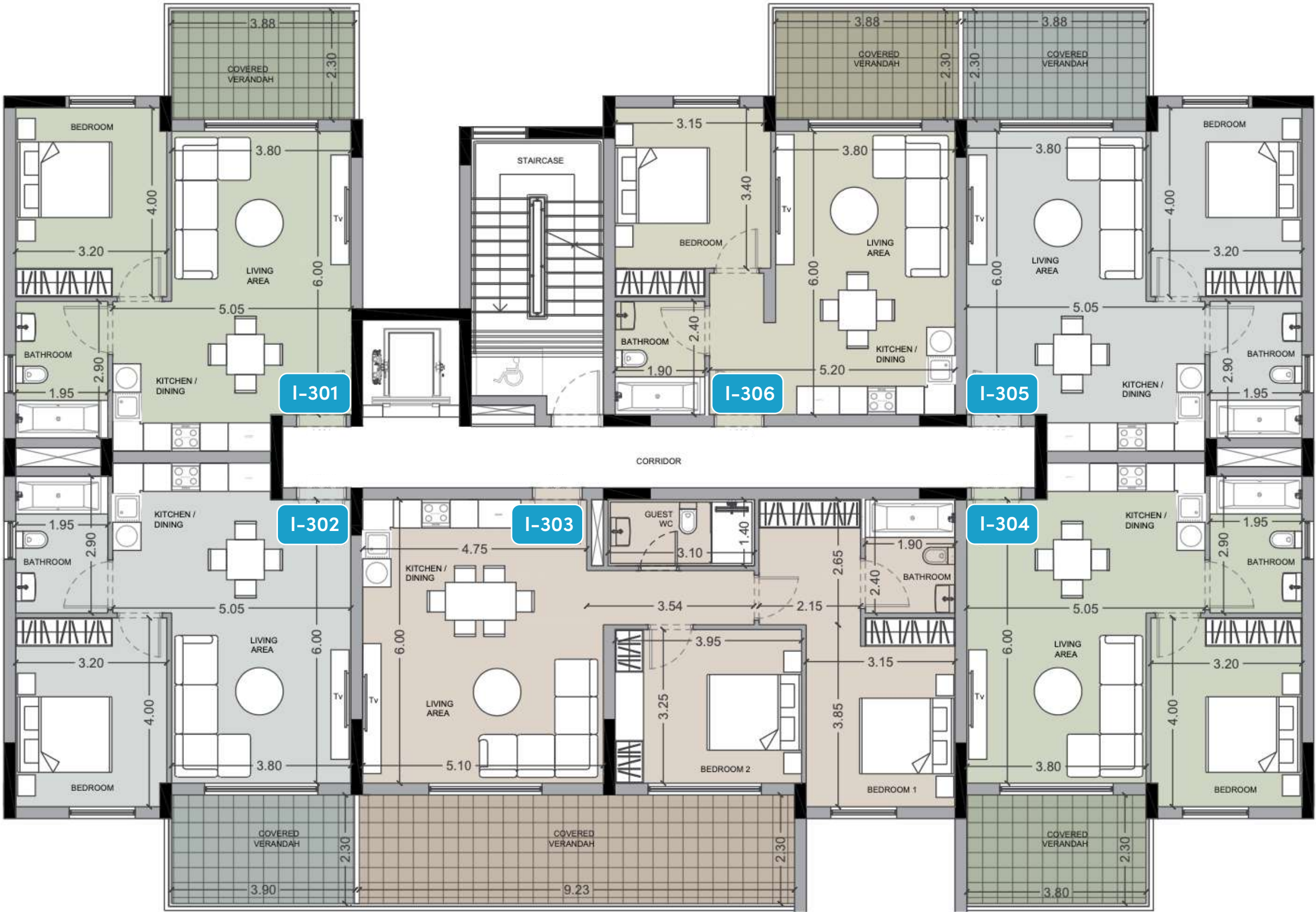


UNIT N°	TOTAL AREA M2
I201	76.39
I202	75.33
I203	127.72
I204	75.45
I205	75.33
I206	72.25



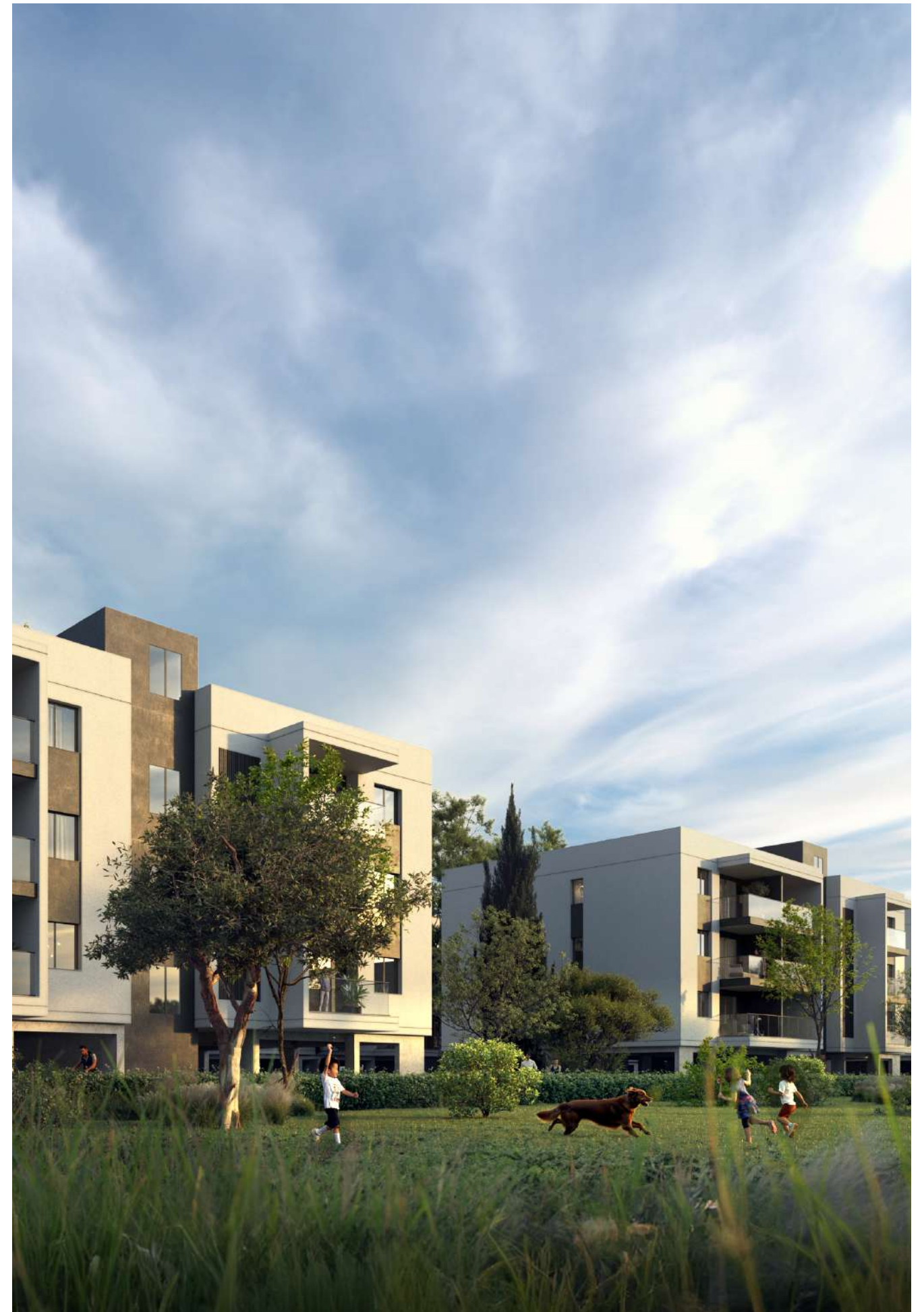


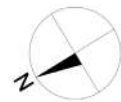
UNIT N°	TOTAL AREA M2
I301	76.39
I302	75.33
I303	127.72
I304	75.45
I305	75.33
I306	72.25



masterplan

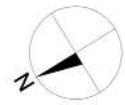
block J





UNIT N°	TOTAL AREA M2
J101	53.09
J102	106.85
J103	72.26
J104	68.40
J105	53.88
J106	68.40
J107	72.37
J108	72.26
J109	69.31



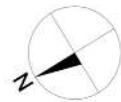


UNIT N°	TOTAL AREA M2
J201	53.09
J202	106.85
J203	72.26
J204	68.40
J205	53.88
J206	68.40
J207	72.37
J208	72.26
J209	69.31



plans

block J
3rd floor

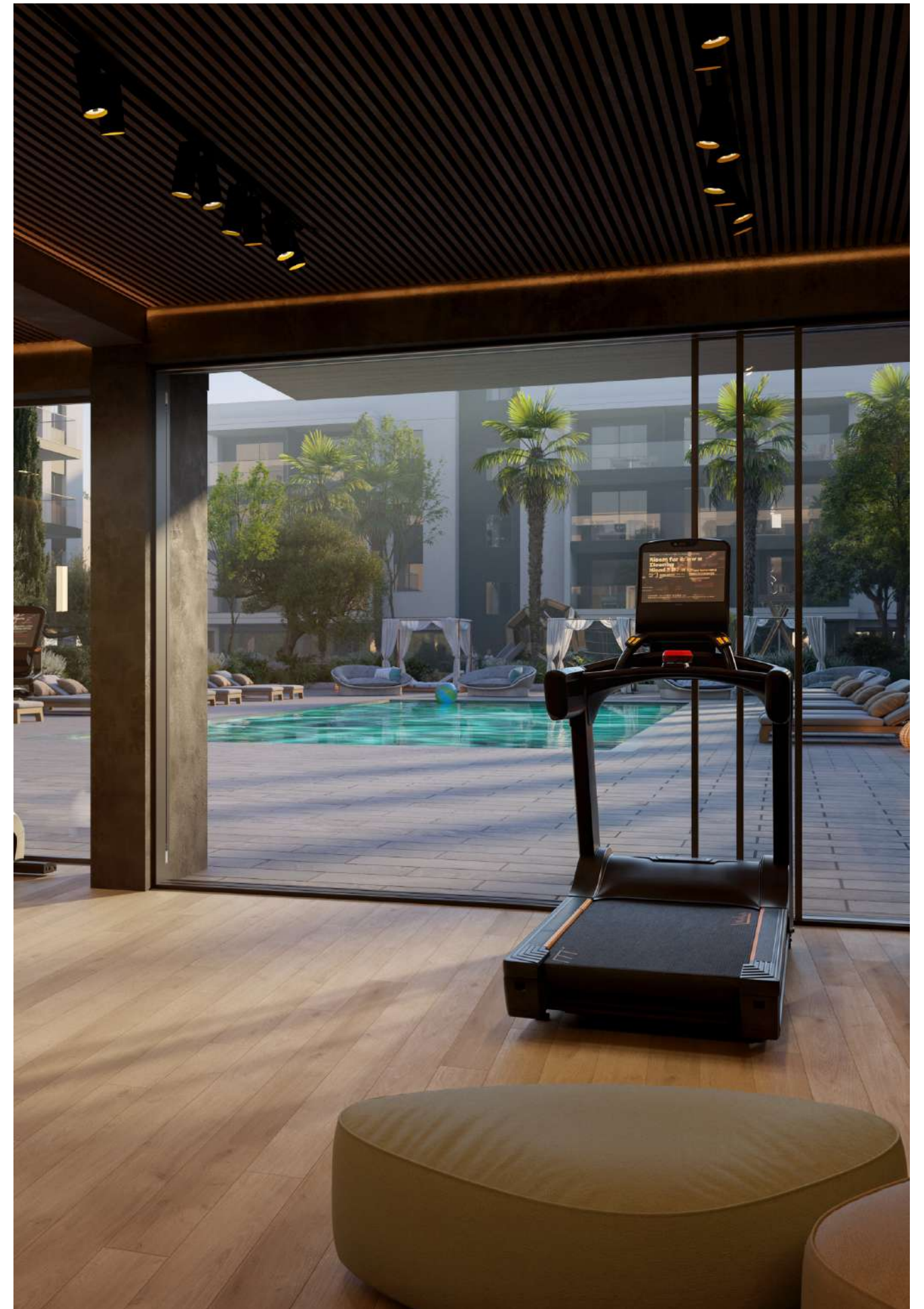
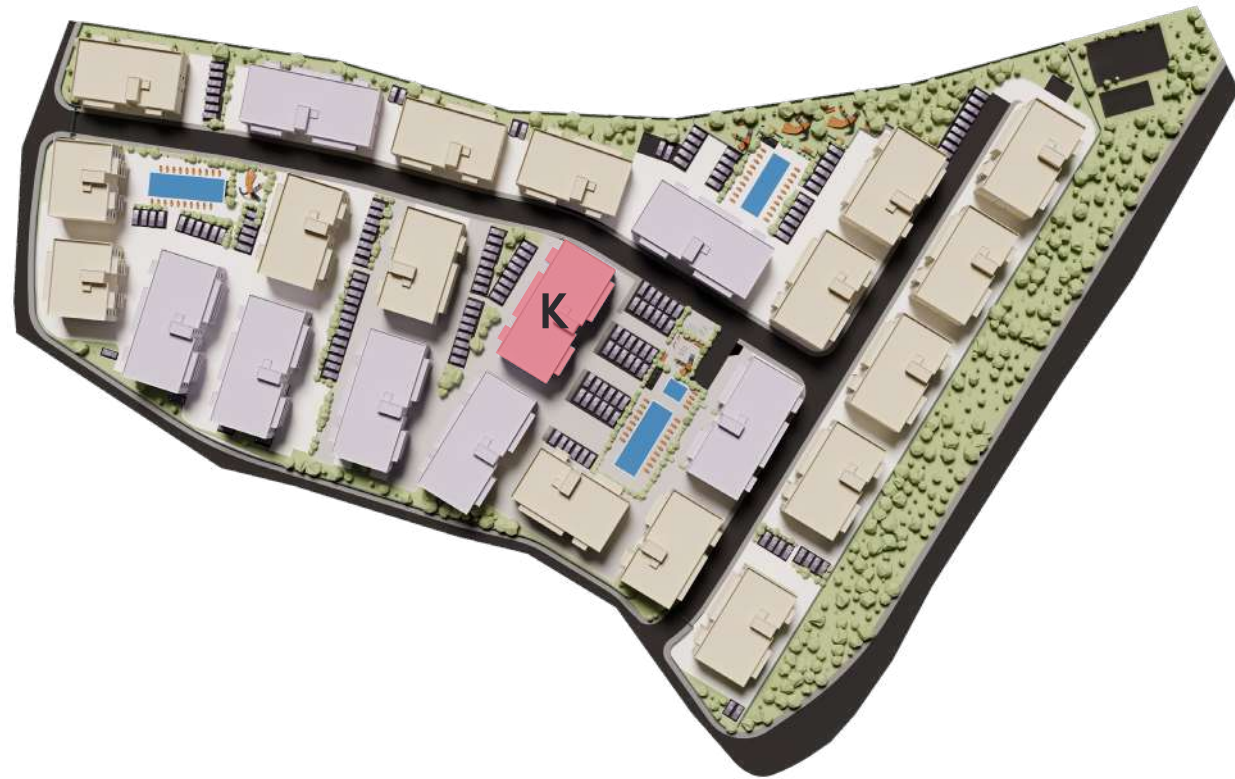


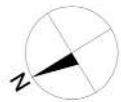
UNIT N°	TOTAL AREA M2
J301	53.09
J302	106.85
J303	72.26
J304	68.40
J305	53.88
J306	68.40
J307	72.37
J308	72.26
J309	69.31



masterplan

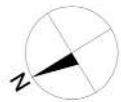
block K





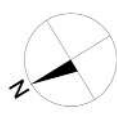
UNIT N°	TOTAL AREA M2
K101	53.09
K102	106.85
K103	72.26
K104	68.40
K105	53.88
K106	68.40
K107	72.37
K108	72.26
K109	69.31





UNIT N°	TOTAL AREA M2
K201	53.09
K202	106.85
K203	72.26
K204	68.40
K205	53.88
K206	68.40
K207	72.37
K208	72.26
K209	69.31





UNIT N°	TOTAL AREA M2
K301	53.09
K302	106.85
K303	72.26
K304	68.40
K305	53.88
K306	68.40
K307	72.37
K308	72.26
K309	69.31



masterplan

block L





UNIT N°	TOTAL AREA M2
L101	53.09
L102	106.85
L103	72.26
L104	68.40
L105	53.88
L106	68.40
L107	72.37
L108	72.26
L109	69.31



plans

block L
2nd floor



UNIT N°	TOTAL AREA M2
L201	53.09
L202	106.85
L203	72.26
L204	68.40
L205	53.88
L206	68.40
L207	72.37
L208	72.26
L209	69.31



plans

block L
3rd floor

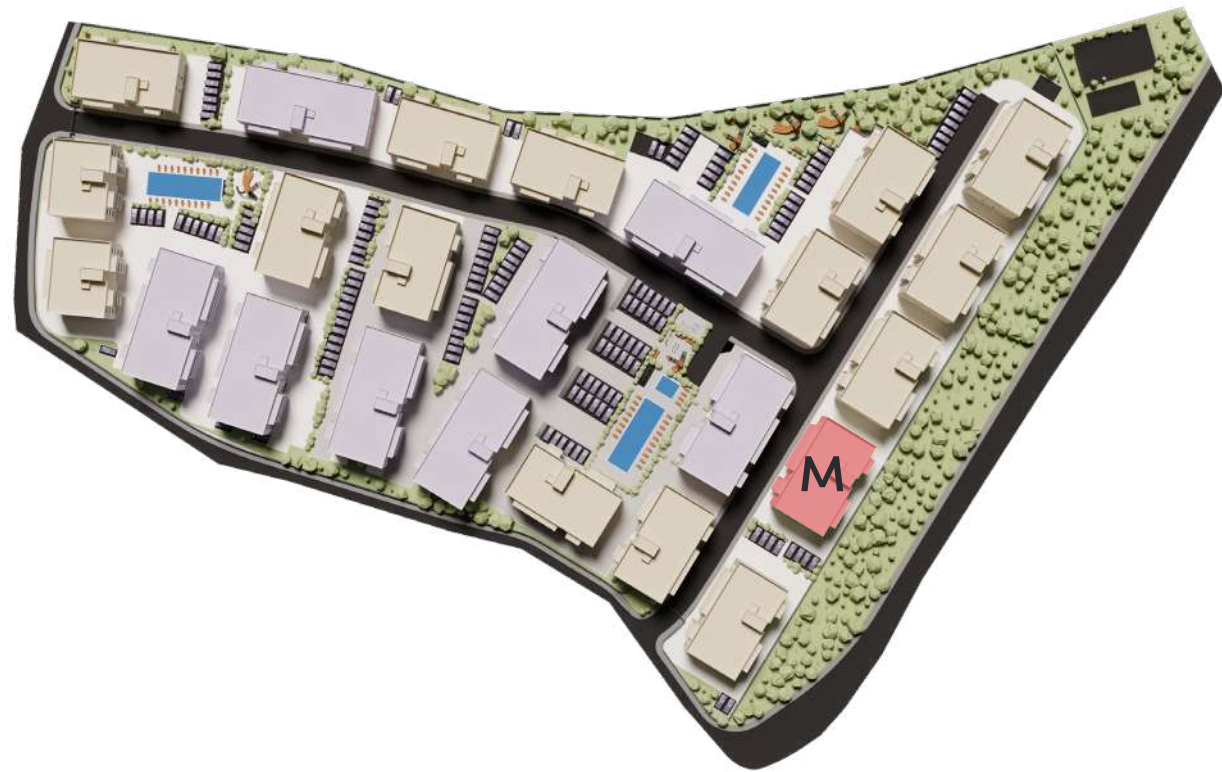


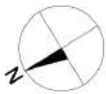
UNIT N°	TOTAL AREA M2
L301	53.09
L302	106.85
L303	72.26
L304	68.40
L305	53.88
L306	68.40
L307	72.37
L308	72.26
L309	69.31



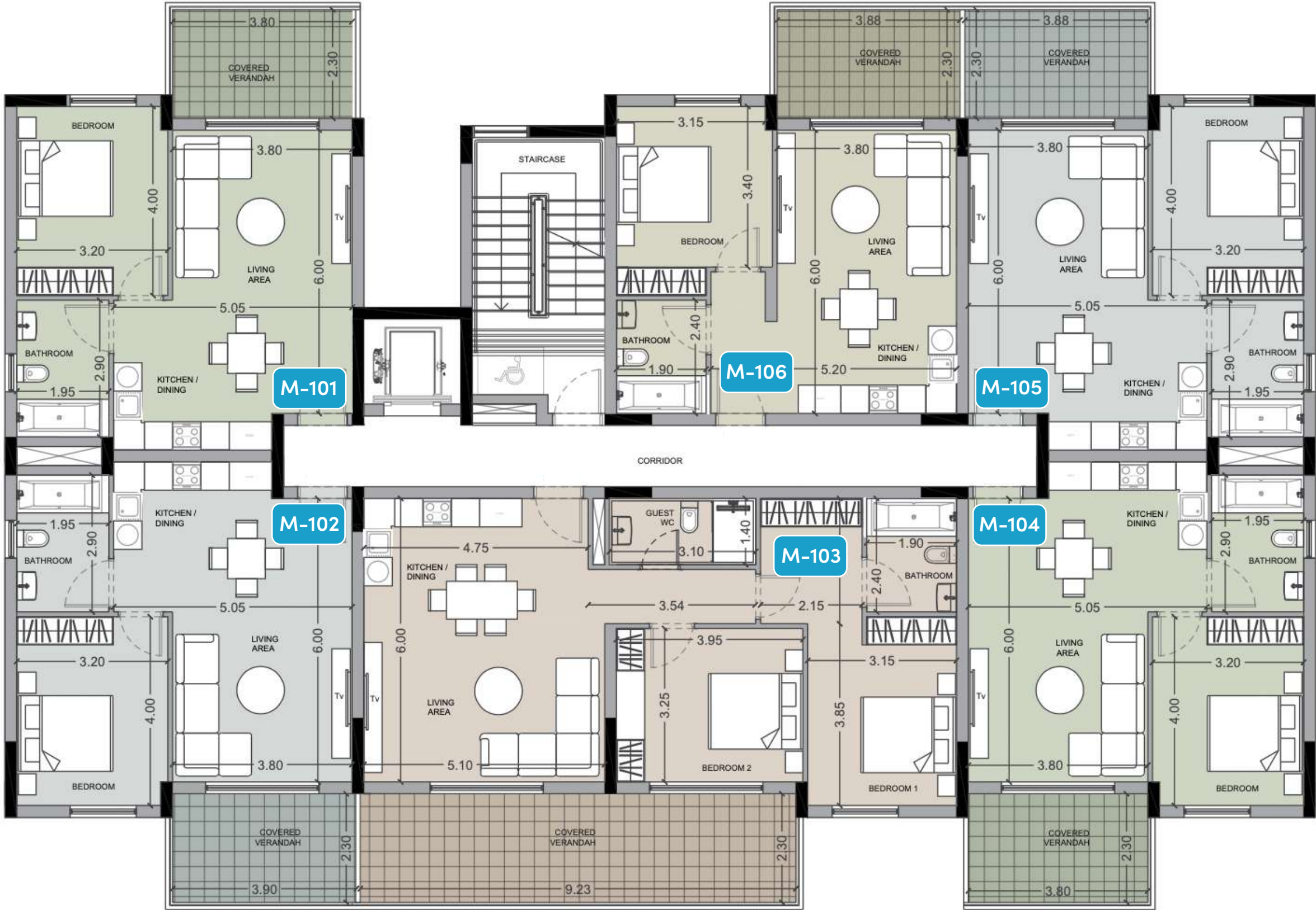
masterplan

block M





UNIT N°	TOTAL AREA M2
M101	74.82
M102	73.77
M103	125.08
M104	73.89
M105	73.77
M106	70.76



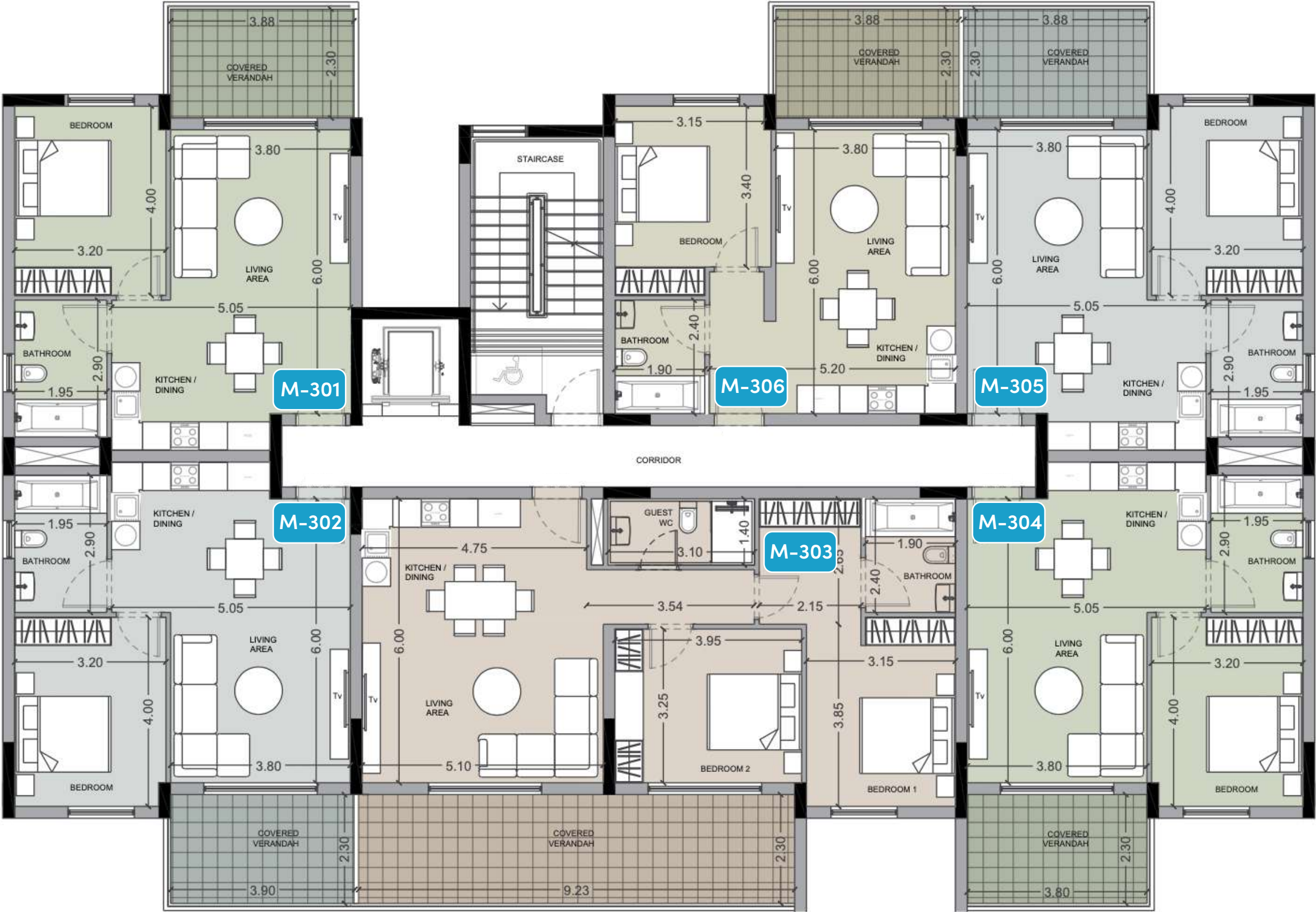


UNIT N°	TOTAL AREA M2
M201	74.82
M202	73.77
M203	125.08
M204	73.89
M205	73.77
M206	70.76





UNIT N°	TOTAL AREA M2
M301	74.82
M302	73.77
M303	125.08
M304	73.89
M305	73.77
M306	70.76



signature finishes

bbf:smart

Every property is delivered with a signature, top-standard finishes package:

- Ceramic tiles in the living room, kitchen, bathrooms and bedrooms;
- Floors & Walls in bathrooms – Ceramic Tiles;
- Internal & External doors, kitchen and wardrobes – Melamine finish;
- Provision for split A/C units in all areas;
- Ceiling height – 2.70m.

Note: movable furniture, home appliances & interior items are extras



bbf: Head office

Head Office in Limassol

28 Ampelakion Street, Germasogeia,
4046 Limassol, P.O.Box 70649, Cyprus

Office: +357 25 315 318
info@bbf.com

bbf: Greece

Office in Athens

88 Vasilissis Sofias Avenue,
115 28 Athens, Greece

Office: +30 210 775 5388
greece@bbf.com

