



MARCO POLO

HIGH LIFE
APARTMENTS

PROJECT BY
PRIME PROPERTY GROUP

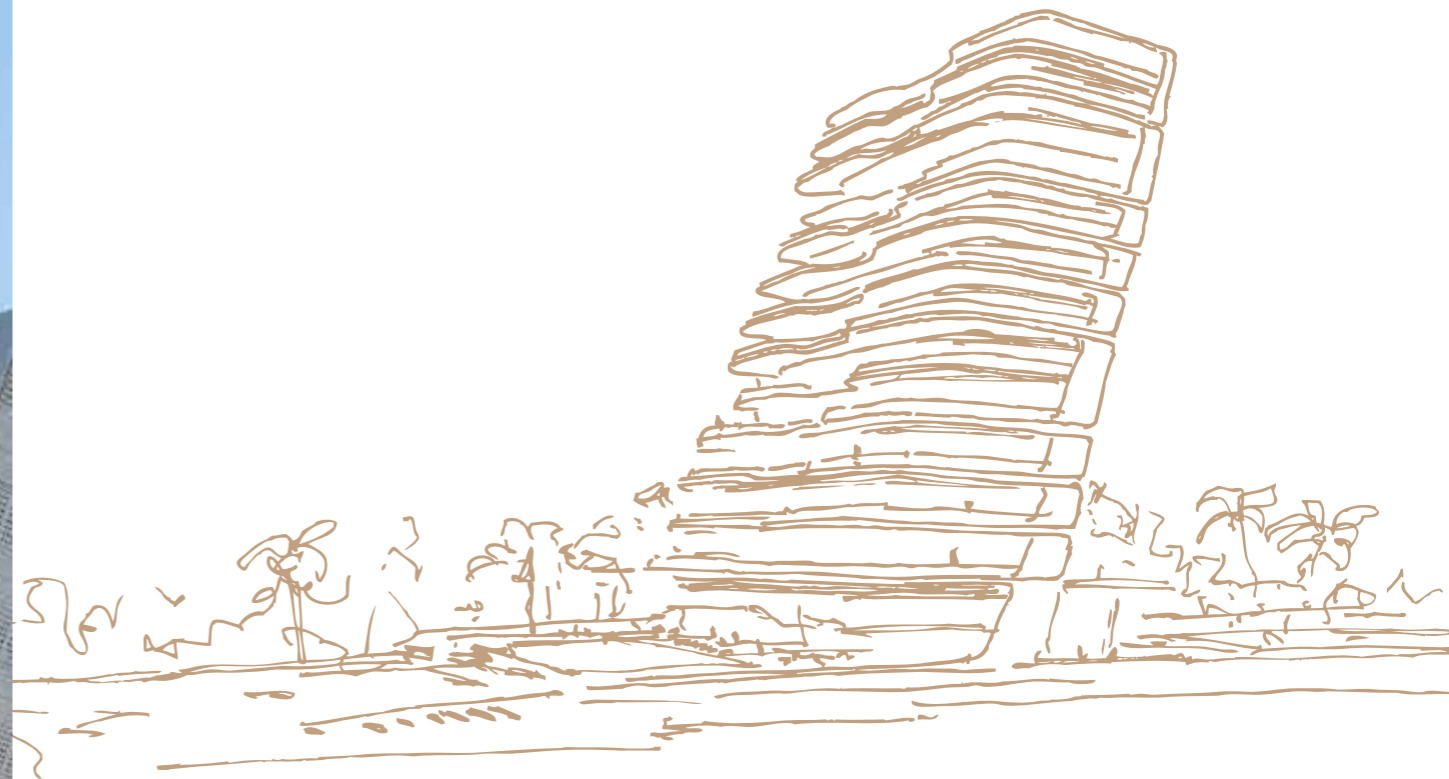
1. DESCRIPTION/MAJOR BENEFITS/4
2. INTRODUCTION/LOCATION/18
3. CHOICE OF PROPERTIES/29
4. PLANS/31
5. INTERIORS/54
6. SIGNATURE FINISHES/72

SPLENDID
BEACHFRONT
DEVELOPMENT
WITH EXCLUSIVE
SEA VIEWS



DESIGNED
BY LONDON'S LEADING
ARCHITECTURE
AND DESIGN STUDIO





A TRULY FRONT LINE LOCATION – NOTHING BETWEEN YOU AND THE SEA

MARCO POLO is a magnificent development located in one of the largest and most vibrant cities right on the beachfront in Amathunda. The prime location, direct access to the beach and spectacular sea views are just some of the upscale and unpretentious vibes that define luxury living.

The project consists of 25 units that have been carefully planned so as to astonish its residents with distinctive design and highend finishes as well as provide ultimate comfort for a unique lifestyle. The penthouses enjoy spacious roof gardens, private swimming pools and breathtaking panoramic views of the Mediterranean Sea.



*All 3D images consist of indicative information and the project can differ insignificantly from the displayed images

MAJOR BENEFITS

- DESIGNED BY LONDON'S LEADING INTERNATIONAL ARCHITECTURE AND DESIGN STUDIO
- A TRULY FRONT LINE LOCATION – NOTHING BETWEEN YOU AND THE SEA
- BREATHTAKING PANORAMIC SEA VIEWS DESIGNED TO ENJOY LIVING AT ITS BEST

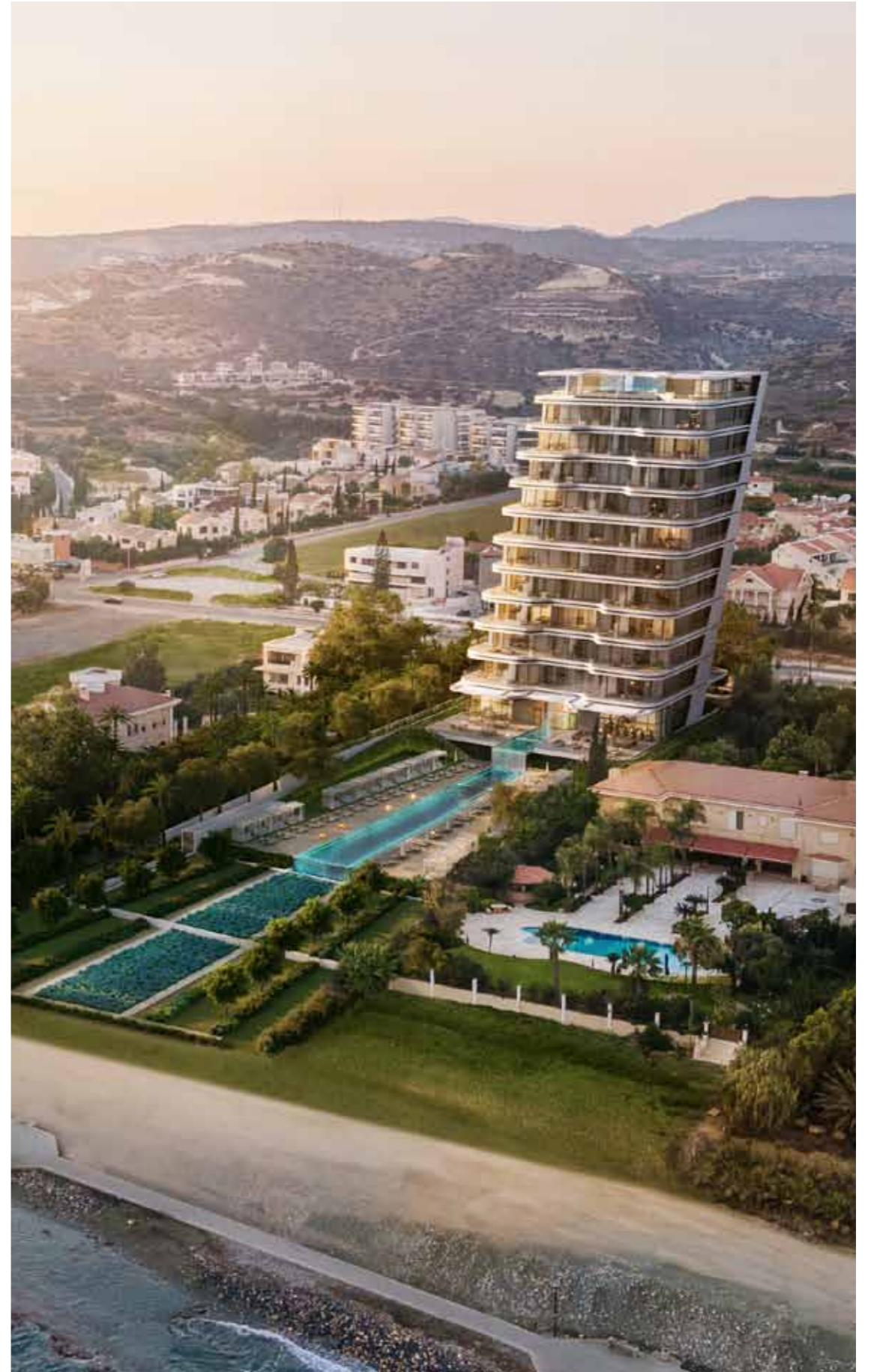
- MOST PRESTIGIOUS NEIGHBORHOOD WITH THE BEST 5-STAR HOTELS, SIGNATURE DINING AND GOLDEN SANDY BEACHES

- **HOTEL-STYLE FACILITIES:** CONCIERGE, SPA, OUTDOOR POOL, HEATED INDOOR POOL, GYM AND UNDERGROUND PARKING



MAJOR BENEFITS

- **TOP STANDARD FINISHES** (HIGH DOORS 2.4 M., SECURITY ENTRANCE DOORS, ALUMINUM WINDOW FRAMES WITH THERMAL BRAKE, HIGH QUALITY BUILTIN FURNITURE)
- HIGH CEILINGS (3.15 M. NET)
- PENTHOUSES WITH PRIVATE ROOF GARDENS. SWIMMING POOLS AND JACUZZI



*All 3D images consist of indicative information and the project can differ insignificantly from the displayed images





*All 3D images consist of indicative information and the project can differ insignificantly from the displayed images

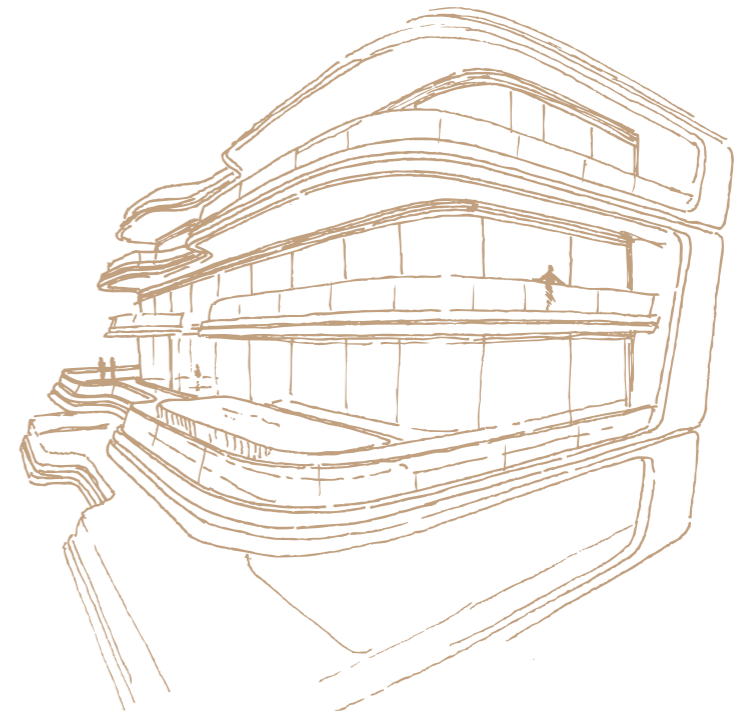


*All 3D images consist of indicative information and the project can differ insignificantly from the displayed images



2

ONE OF THE MOST
PRESTIGIOUS
NEIGHBOURHOODS WITH
THE BEST 5-STAR HOTELS,
SIGNITURE DINING
AND GOLDEN SANDY
BEACHES

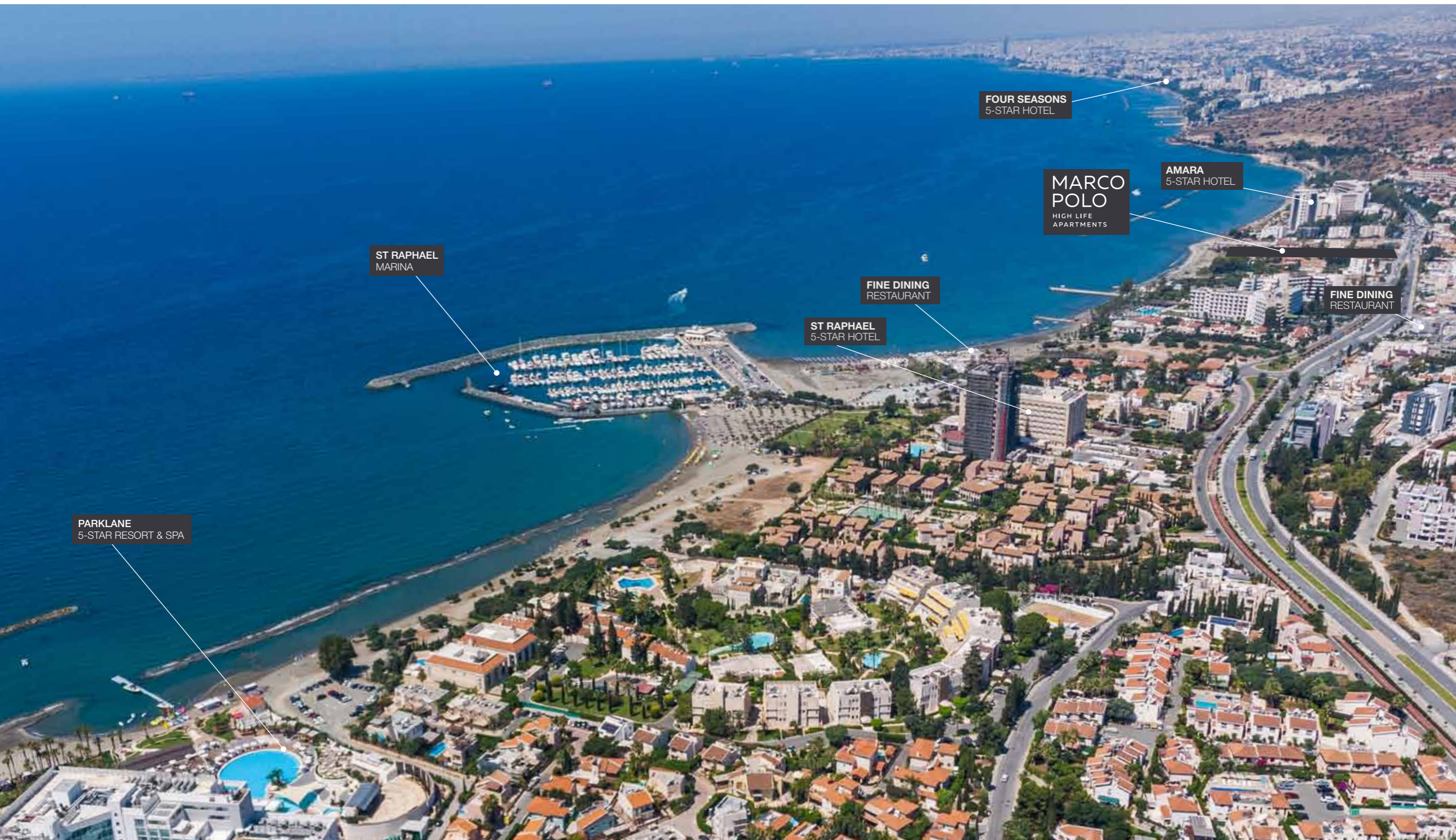


INTRODUCTION

Limassol is the second largest urban area in Cyprus, located on the southern coast, with an urban population of 240 000. Limassol was built between two ancient cities – Amathus and Kourion – and during Byzantine rule it was known as Neapolis (new town). Limassol's historical centre is located around its medieval Limassol Castle and the Old Port. Today the city spreads along the Mediterranean coast and has extended much farther than the castle and port, with its suburbs stretching along the coast to Amathus.

The history of Limassol is largely associated with the Third Crusade of Richard the Lionheart, who arrived in Limassol in 1191 on his way to the Holy Land. He arrested the renegade Byzantine Greek governor of Cyprus Limassol, Isaac Komnenos, taking over the entire island, and bringing the long Byzantine dominion of Cyprus to an end. Richard also celebrated his marriage with Berengaria who had received the crown as queen of England in Limassol. Richard destroyed Amathus and the inhabitants were transferred to Limassol.

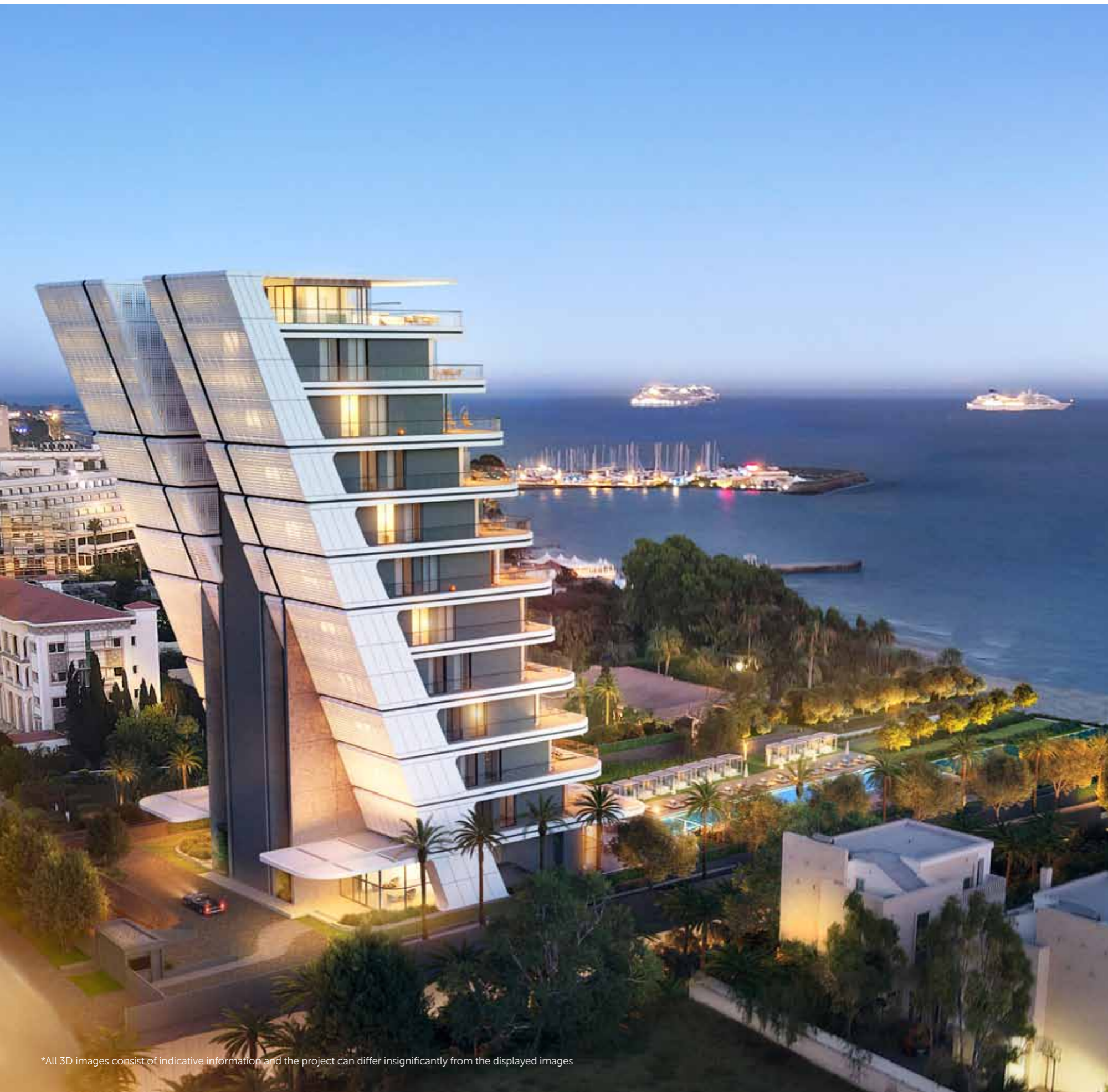
Limassol has a Subtropical Mediterranean climate with warm to hot, dry summers and very mild winters, separated by short springs and autumns which are generally beautiful.



LOCATION

The project is located adjacent to the 5-star St. Raphael Resort and Marina which is located 6 miles east of Limassol centre. Being the only private Marina consisting over 230 berths for private yachts up to 30 m. LOA with a world class luxury resort. The challenge is how to harness that beauty while providing an intelligent and functional design that inspires the creativity in itself.

St. Raphael has become recognized as representing some of the world's most impressive examples for the rich and famous. From fabulous yachting and water sports to fine dining and a vibrant nightlife. An exciting mix of sports and entertainment will complement your taste for fine living. The Marina offers many facilities from basic utilities to high standard repairs and maintenance. Every detail has been meticulously designed to bring home the best of resort living.



*All 3D images consist of indicative information and the project can differ insignificantly from the displayed images



This stunning development is built on 1.58 acres (7433 m²) of land, south facing the seafront. Direct access to the coastal road at your doorstep and exquisite amenities with endless choices, but yet further enhanced by a beautiful seafront promenade leading to the Marina.



3

BREATHTAKING
UNOBSTRUCTED
SEA VIEWS



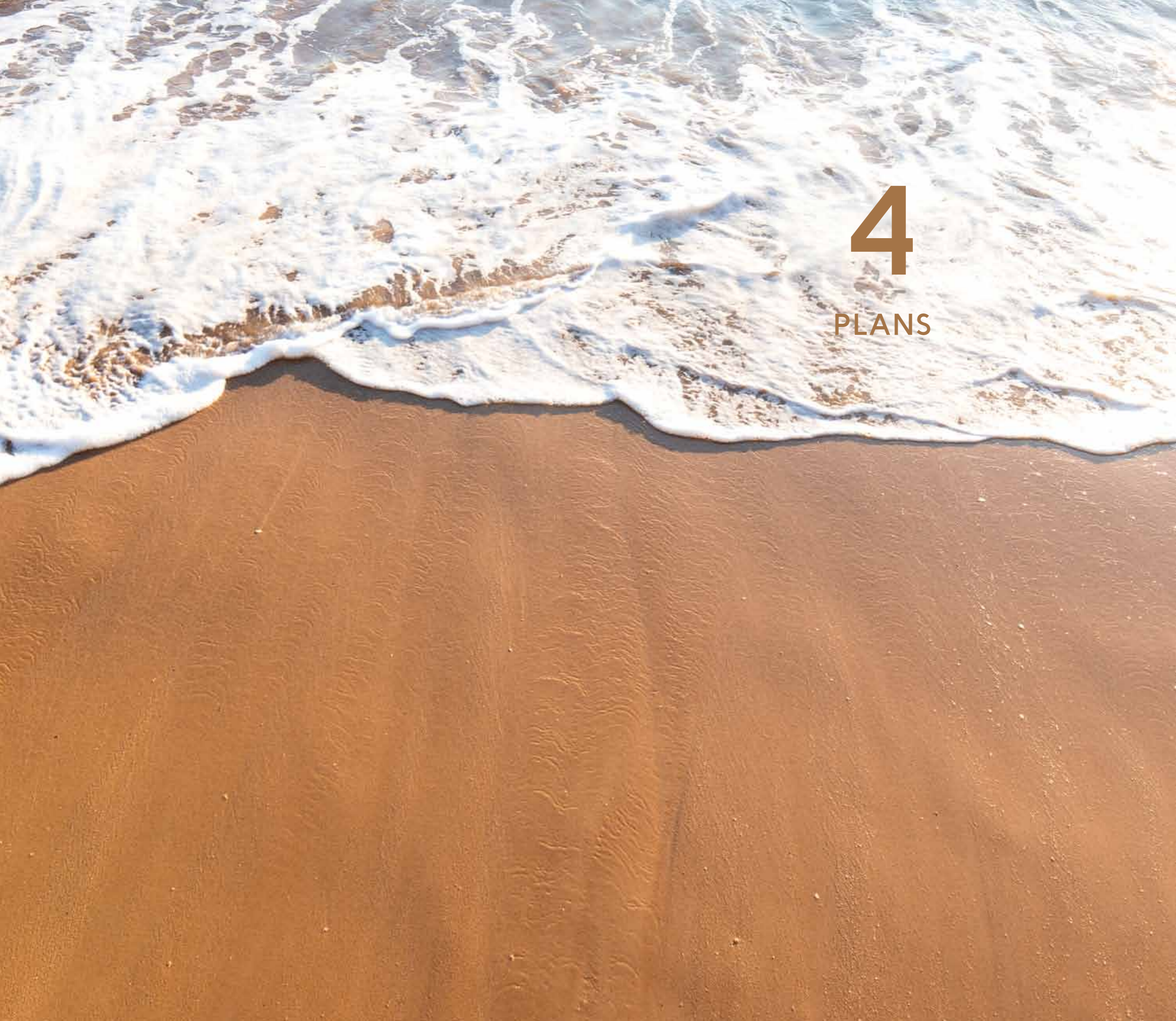
*All 3D images consist of indicative information and the project can differ insignificantly from the displayed images

CHOICE OF PROPERTIES



MARCO POLO is surrounded by low rise super-prime private residences which offer an unobstructed 360 degree view at a height of over 10m. The project is an elegant and outstanding example of contemporary architecture which represents luxury at its finest.

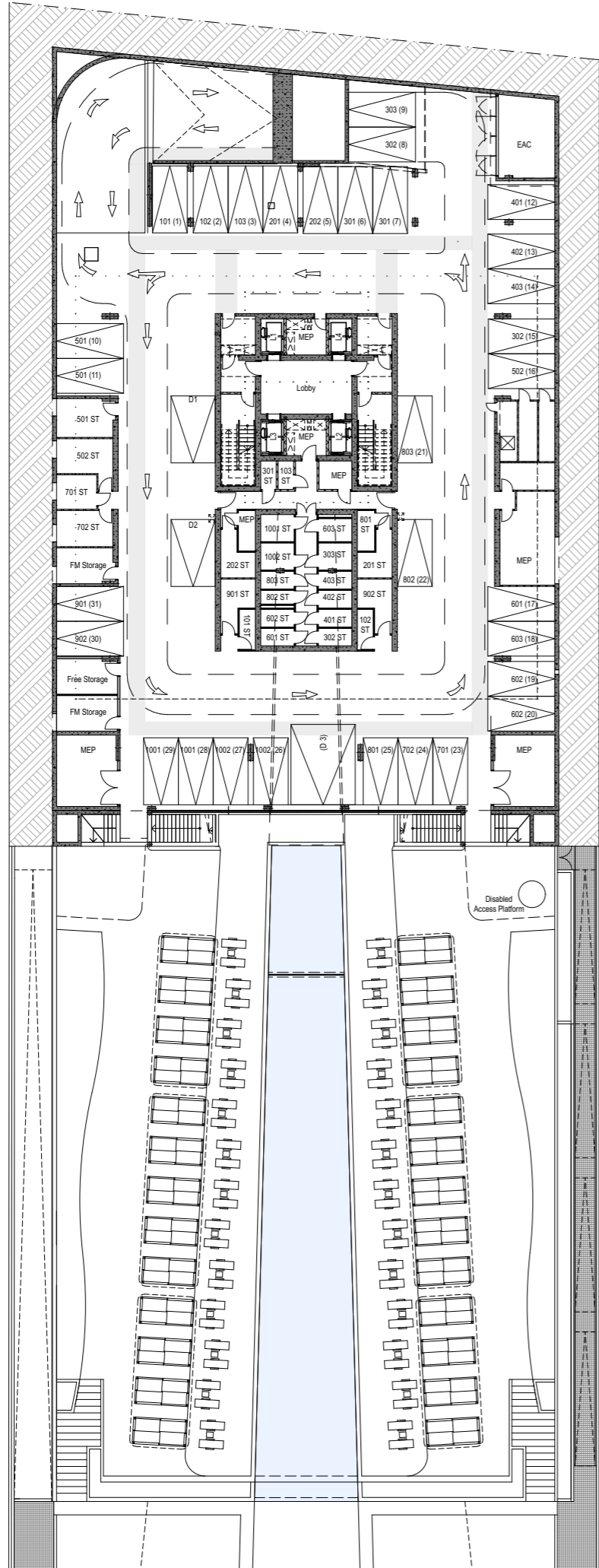
Nº	Floor	Type	Bedrooms	Bathrooms	Parking Spaces	Indoor area sq.m.	Cov. veranda sq.m.	Uncov. veranda sq.m.	Planter area sq.m.	Roof terrace sq.m.	Pool	Private cabana sq.m.	Total area sq.m.
101		Apartment	2	2	1	94.39	25.84	13.74	11.03		Common	10.78	155.78
102	1st	Apartment	2	2	1	87.73	22.77	27.10			Common	10.78	148.38
103		Apartment	2	2	1	94.34	25.84	13.74	11.03		Common	10.78	155.73
201	2nd	Apartment	3	3	1	131.57	45.56	23.49	11.00		Common	10.78	222.40
202		Apartment	3	3	1	131.57	45.56	23.49	11.00		Common	10.78	222.40
301		Apartment	2	2	2	94.36	25.86	11.63	10.99		Common	10.78	153.62
302	3rd	Apartment	2	2	2	87.05	23.12	23.13			Common	10.78	144.08
303		Apartment	2	2	1	94.32	25.86	11.63	10.99		Common	10.78	153.58
401		Apartment	2	2	1	93.39	19.97	17.47	12.07		Common	10.78	153.68
402	4th	Apartment	2	2	1	87.47	27.95	11.90			Common	10.78	138.10
403		Apartment	2	2	1	93.35	19.97	17.47	12.07		Common	10.78	153.64
501	5th	Apartment	3	3	2	138.62	38.27	7.13	5.10		Common	10.78	199.90
502		Apartment	3	3	1	138.62	38.27	7.13	5.10		Common	10.78	199.90
601		Apartment	2	2	1	105.76	25.78	15.48	11.76		Common	10.78	169.56
602	6th	Apartment	2	2	2	99.30	17.13	30.84			Common	10.78	158.05
603		Apartment	2	2	1	105.71	25.78	15.48	11.76		Common	10.78	169.51
701	7th	Apartment	3	3	1	126.66	45.56	32.64	12.04		Common	10.78	227.68
702		Apartment	3	3	1	126.66	45.56	32.64	12.04		Common	10.78	227.68
801		Apartment	2	2	1	94.38	25.84	11.61	12.32		Common	10.78	154.93
802	8th	Apartment	2	2	1	87.09	23.08	23.13			Common	10.78	144.08
803		Apartment	2	2	1	94.33	25.84	11.61	12.32		Common	10.78	154.88
901	9th	Apartment	3	3	1	126.46	43.25	25.48	13.51		Common	10.78	219.48
902		Apartment	3	3	1	126.46	43.25	25.48	13.51		Common	10.78	219.48
1001	10th 11th	Penthouse Auxiliary	3	3	2	134.59	43.59	20.24	5.54	141.33	Private	10.78	409.92
1002	10th 11th	Penthouse Auxiliary	3	3	2	134.59	43.59	20.24	5.54	141.33	Private	10.78	409.92



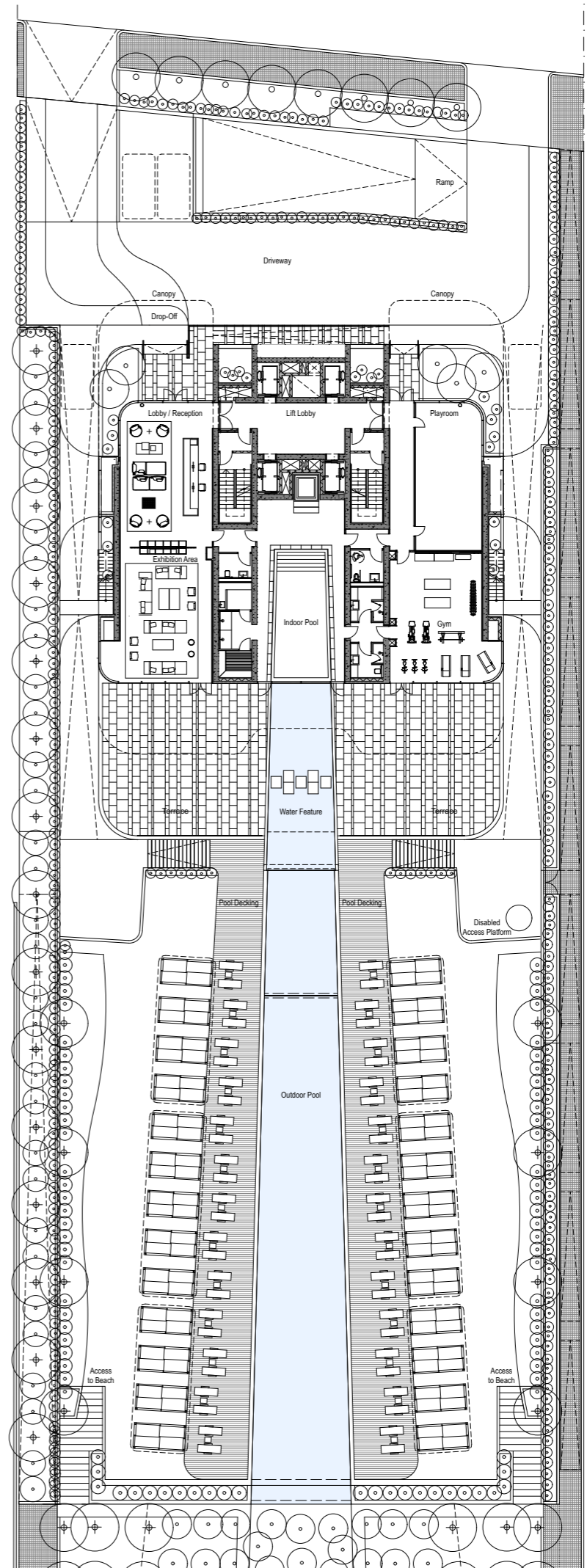
4

PLANS

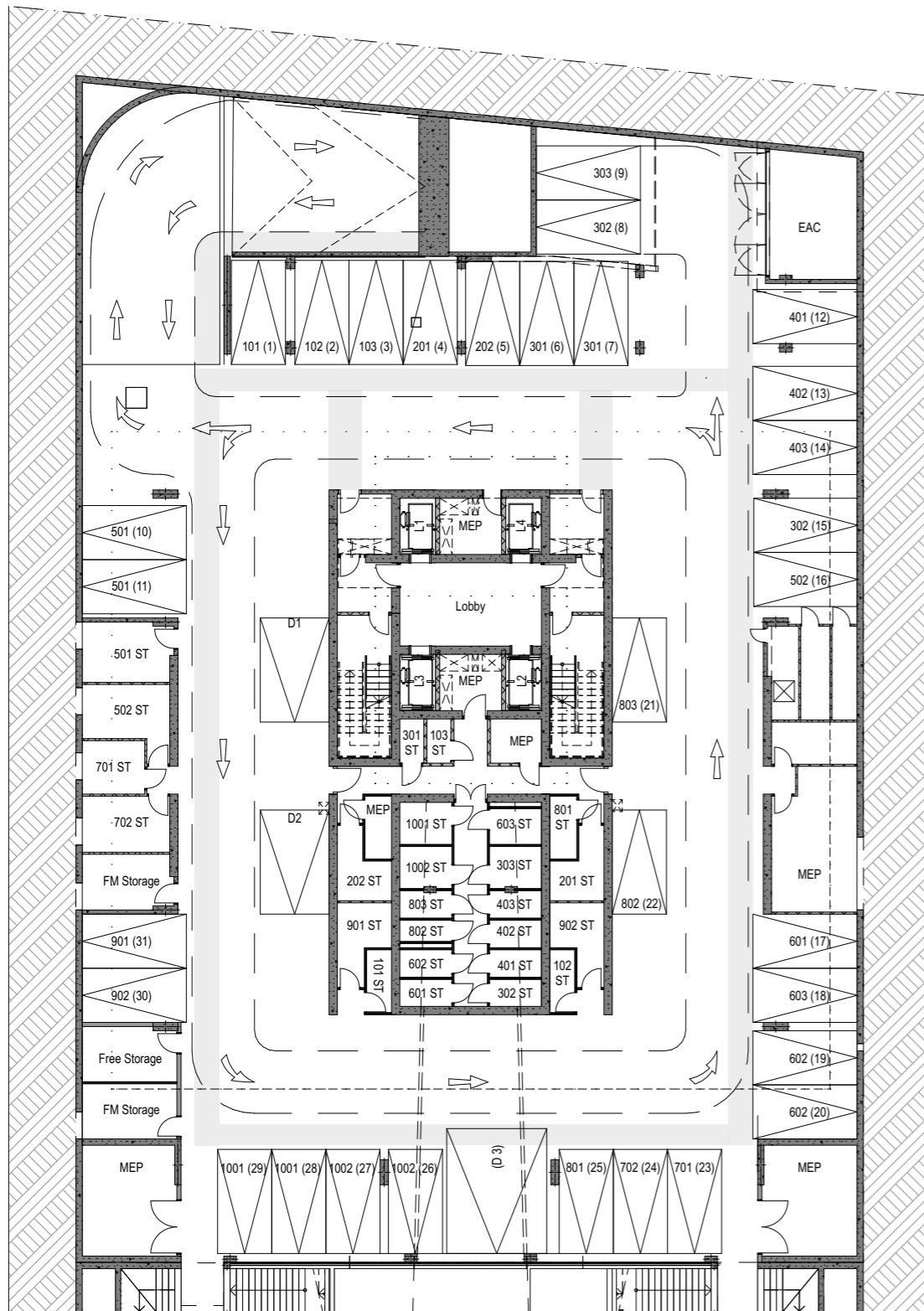
BASEMENT/LEVEL -1



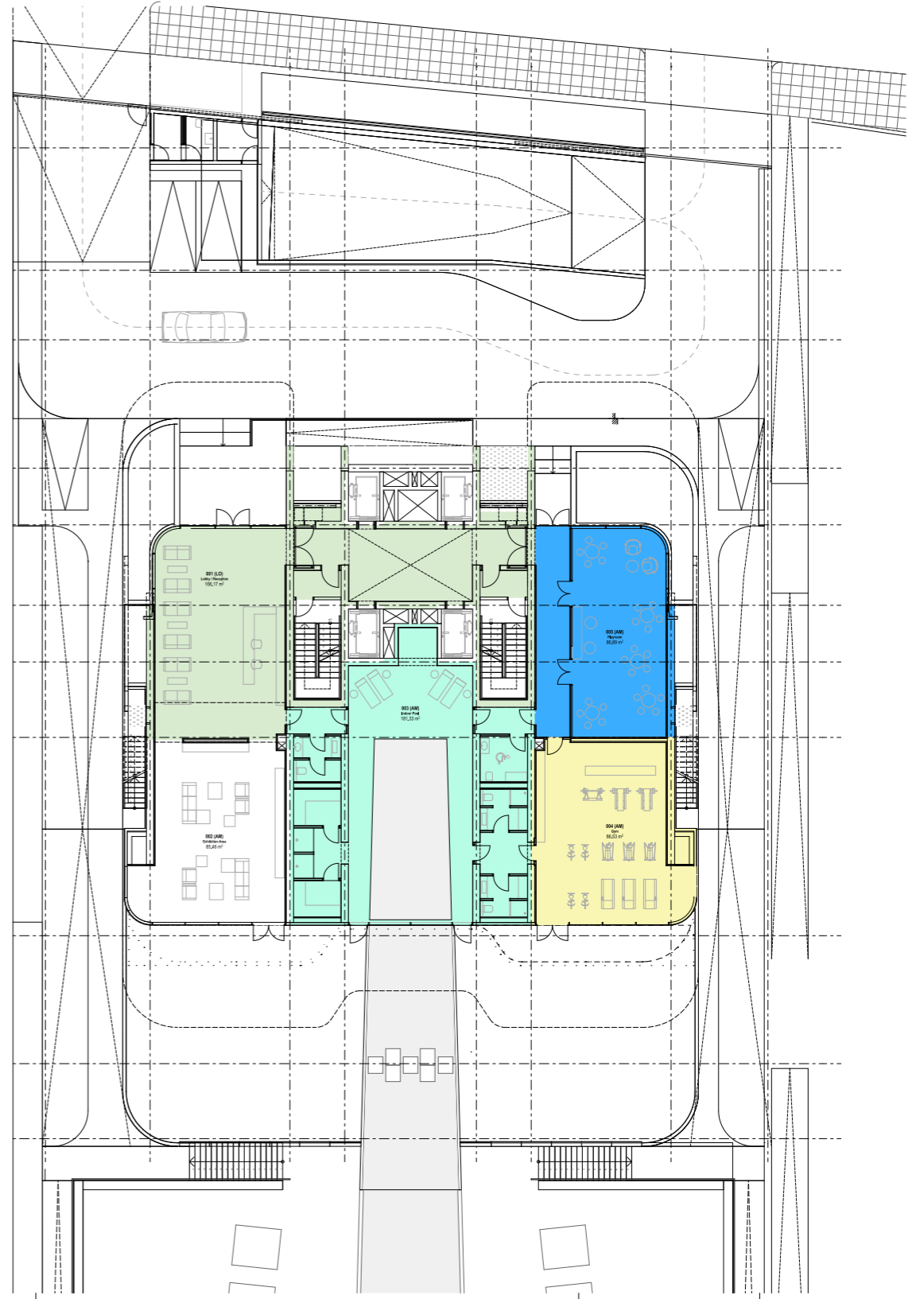
GROUND FLOOR/LEVEL 0



BASEMENT/LEVEL -1



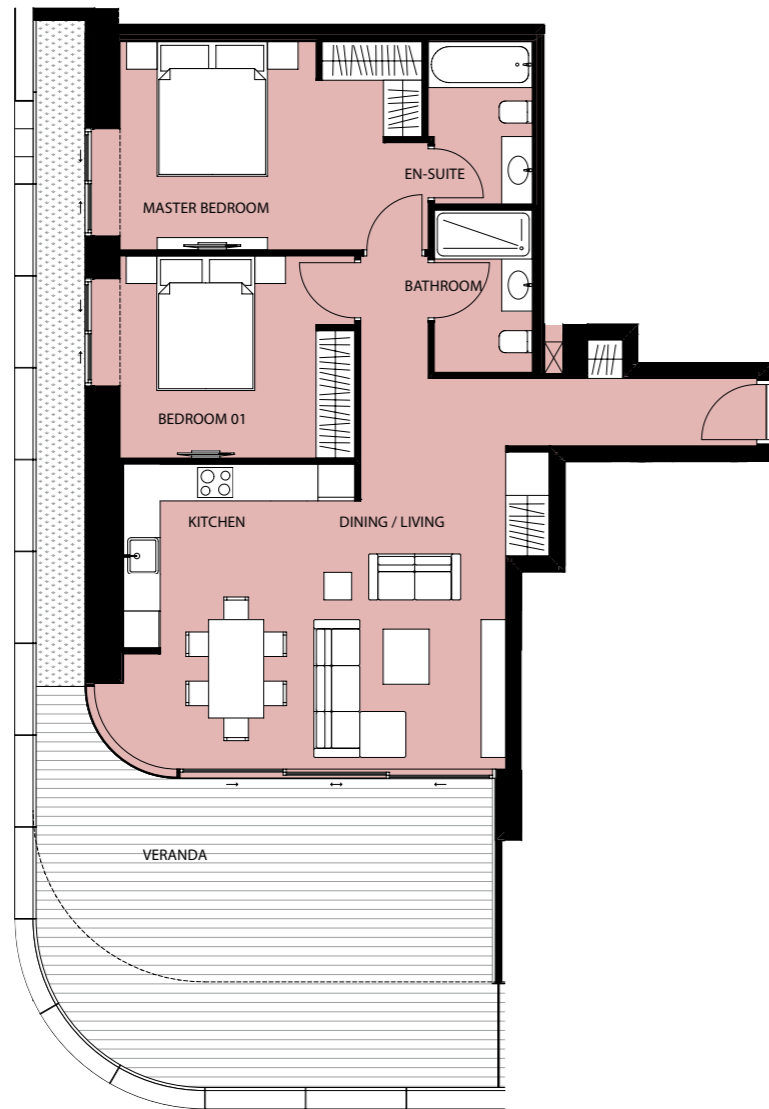
GROUND FLOOR/LEVEL 0



Floor plans shown are for approximate measurements only. Exact layout and sizes may vary. All measurements may vary within a tolerance of 5%.

LEVELS 01, 03, 08

2 BEDROOM APARTMENT (WEST)/TYPE A



APARTMENT

101, 301, 801

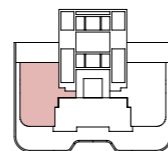
Floorplan location - Levels 01, 03, 08

TOTAL AREA

From 143.18 to 145.58 sq.m.

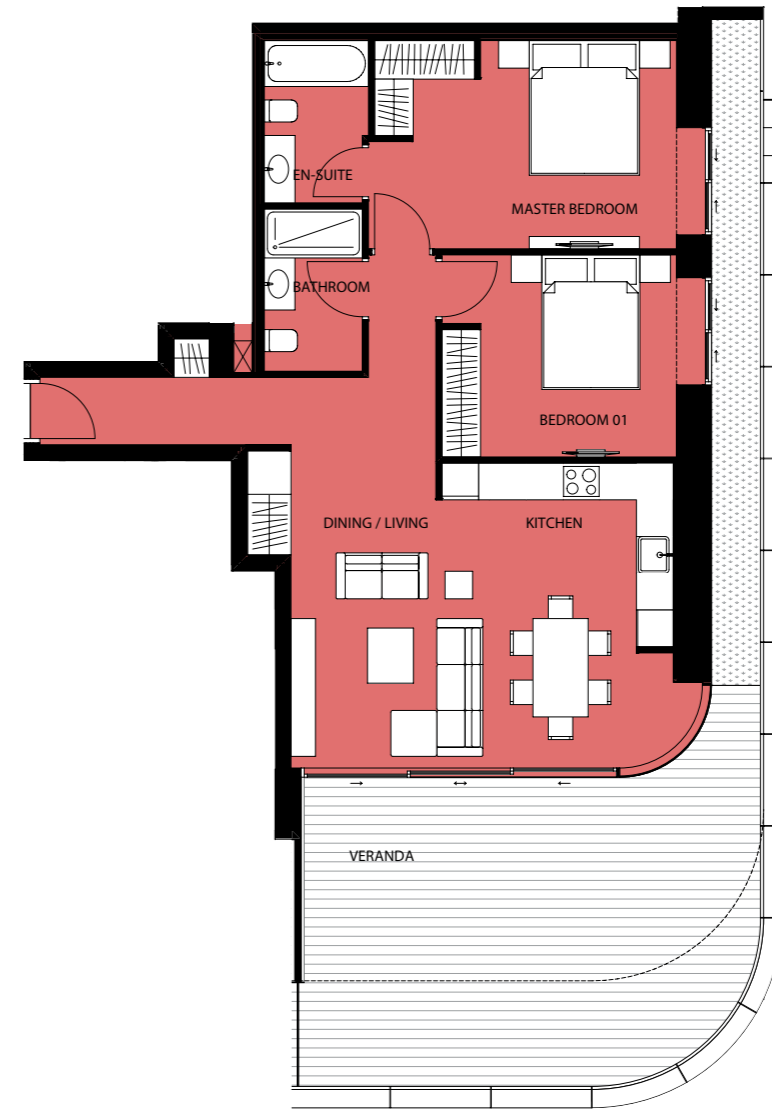
Living/Dining/Kitchen
Master Bedroom
En-suite
Bedroom 01
Bathroom

5.00 m x 6.25 m
3.40 m x 4.95 m
1.70 m x 2.65 m
3.30 m x 3.85 m
1.60 m x 2.65 m



LEVELS 01, 03, 08

2 BEDROOM APARTMENT (EAST)/TYPE A



APARTMENT

103, 303, 803

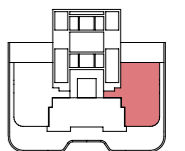
Floorplan location - Levels 01, 03, 08

TOTAL AREA

From 143.14 to 145.26 sq.m.

Veranda From
Living/Dining/Kitchen
Master Bedroom
En-suite
Bedroom 01
Bathroom

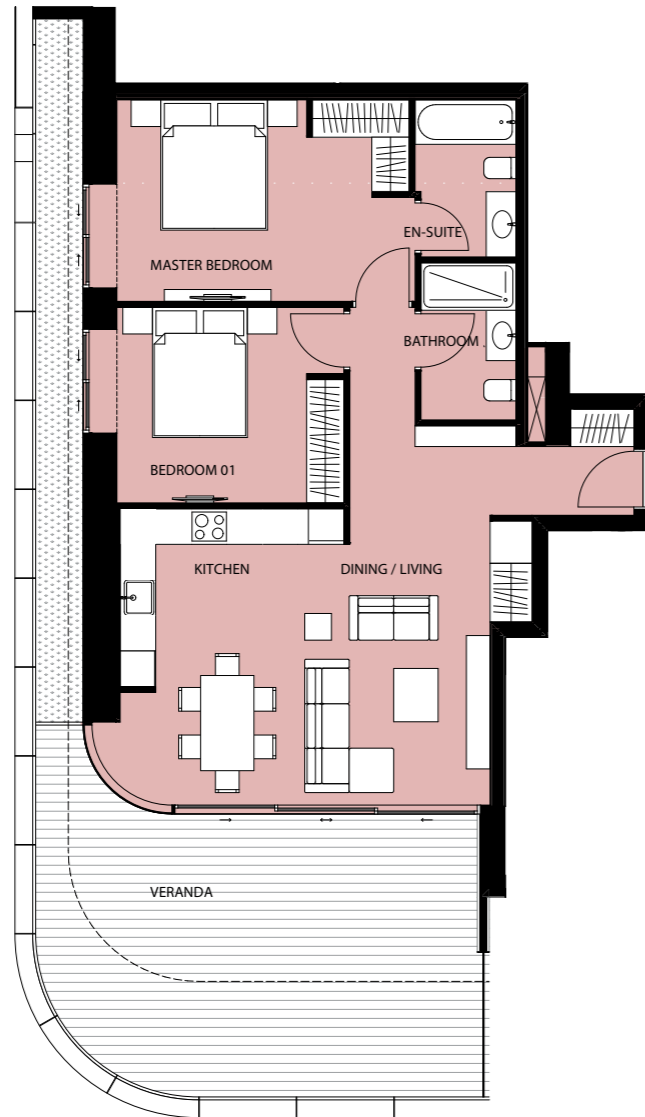
7.43 to 39.55 sq.m.
5.00 m x 6.25 m
3.40 m x 4.95 m
1.70 m x 2.65 m
3.30 m x 3.85 m
1.60 m x 2.65 m



Floor plans shown are for approximate measurements only. Exact layout and sizes may vary. All measurements may vary within a tolerance of 5%.

LEVEL 04

2 BEDROOM APARTMENT (WEST)/TYPE A



APARTMENT

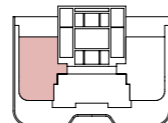
401

Floorplan location - Level 04

TOTAL AREA

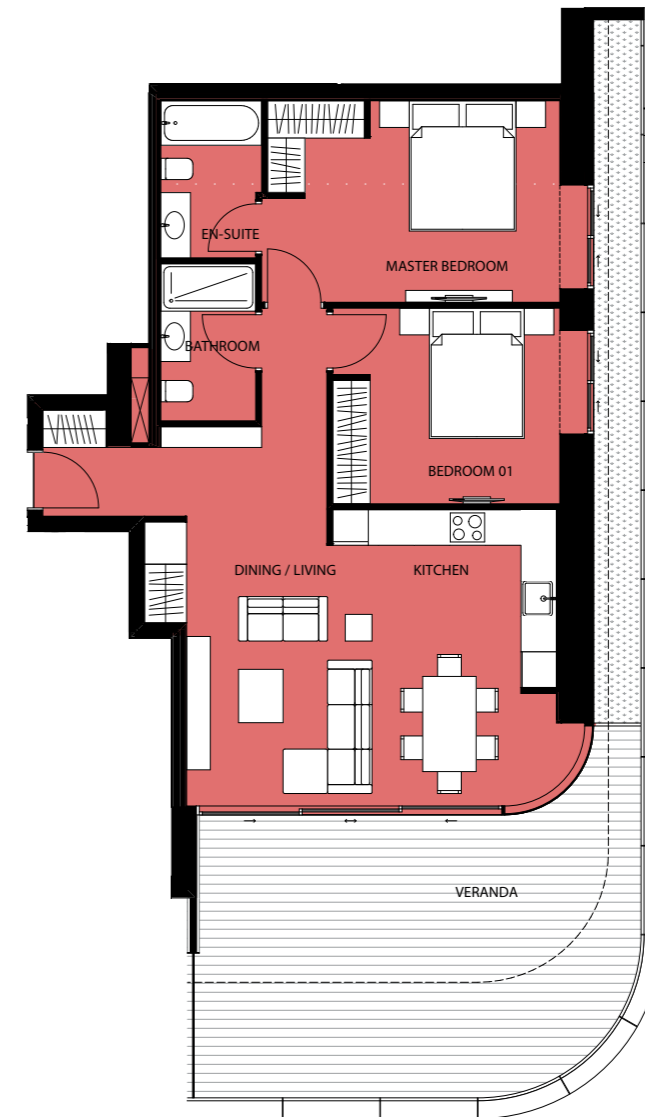
142.93 sq.m.

Veranda	37.42 sq.m.
Living/Dining/Kitchen	5.00 m x 6.25 m
Master Bedroom	3.40 m x 4.95 m
En-suite	1.70 m x 2.65 m
Bedroom 01	3.30 m x 3.85 m
Bathroom	1.60 m x 2.65 m



LEVEL 04

2 BEDROOM APARTMENT (EAST)/TYPE A



APARTMENT

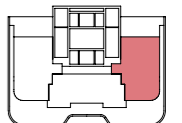
403

Floorplan location - Level 04

TOTAL AREA

142.88 sq.m.

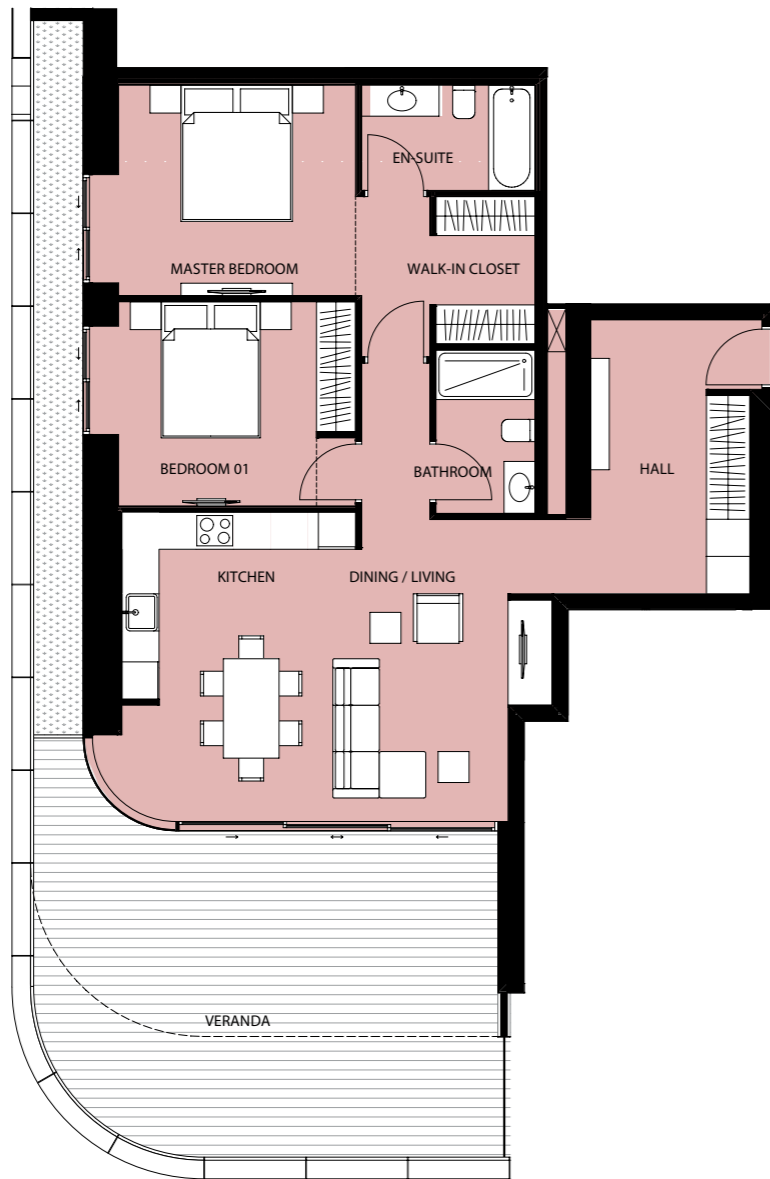
Veranda	37.42 sq.m.
Living/Dining/Kitchen	5.00 m x 6.25 m
Master Bedroom	3.40 m x 4.95 m
En-suite	1.70 m x 2.65 m
Bedroom 01	3.30 m x 3.85 m
Bathroom	1.60 m x 2.65 m



Floor plans shown are for approximate measurements only. Exact layout and sizes may vary. All measurements may vary within a tolerance of 5%.

LEVEL 06

2 BEDROOM APARTMENT (WEST)/TYPE A



APARTMENT

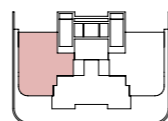
601

Floorplan location - Level 06

TOTAL AREA

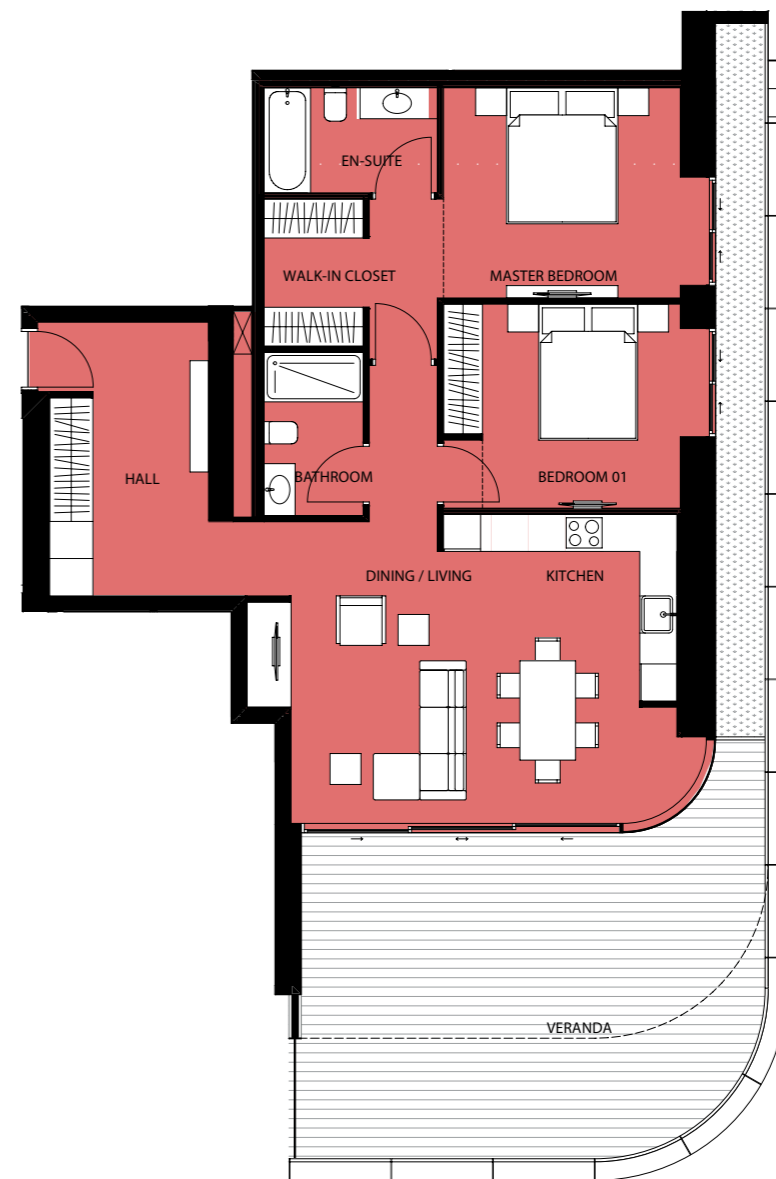
158.68 sq.m.

Veranda	41.23 sq.m.
Hall	2.55 m x 4.40 m
Living/Dining/Kitchen	5.00 m x 6.25 m
Master Bedroom	3.45 m x 5.00 m
Walk-in Closet	1.60 m X 2.40 m
En-suite	1.70 m x 2.80 m
Bedroom 01	3.30 m x 3.85 m
Bathroom	1.60 m x 2.70 m



LEVEL 06

2 BEDROOM APARTMENT (EAST)/TYPE A



APARTMENT

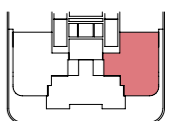
603

Floorplan location - Level 06

TOTAL AREA

158.63 sq.m.

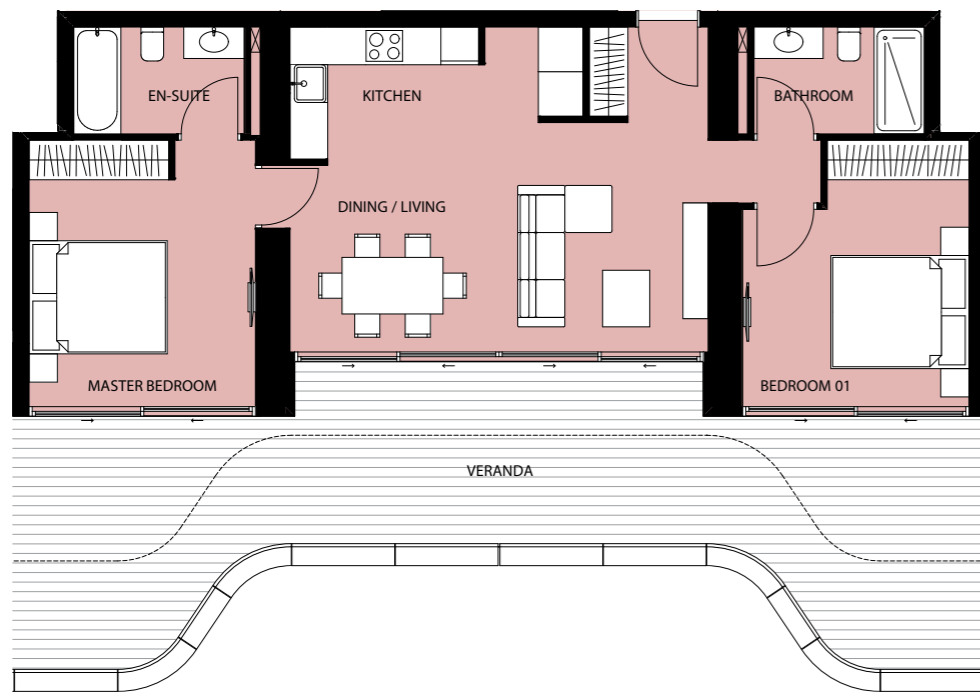
Veranda	41.23 sq.m.
Hall	2.55 m x 4.40 m
Living/Dining/Kitchen	5.00 m x 6.25 m
Master Bedroom	3.45 m x 5.00 m
Walk-in Closet	1.60 m X 2.40 m
En-suite	1.70 m x 2.80 m
Bedroom 01	3.30 m x 3.85 m
Bathroom	1.60 m x 2.70 m



Floor plans shown are for approximate measurements only. Exact layout and sizes may vary. All measurements may vary within a tolerance of 5%.

LEVEL 01, 03, 04, 08

2 BEDROOM APARTMENT/TYPE B



APARTMENT

102, 302, 402, 802

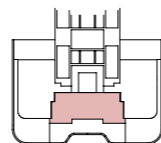
Floorplan location - Levels 01, 03, 04, 08

TOTAL AREA

From 127.28 to 137.60 sq.m.

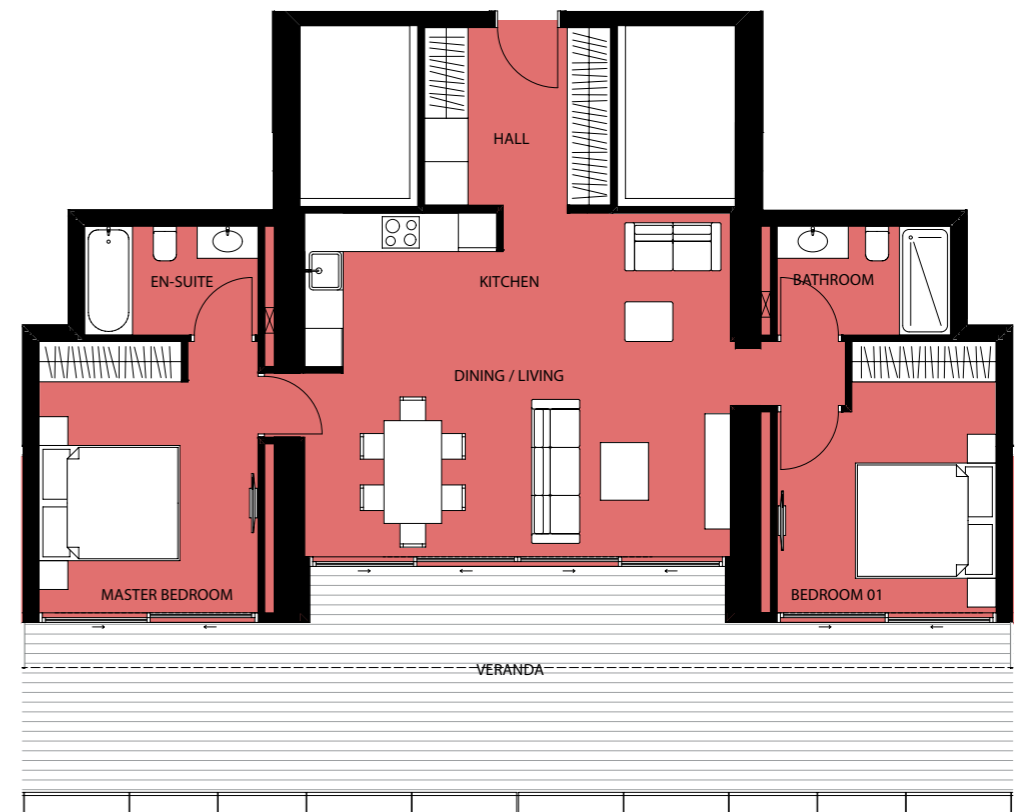
Veranda
Living/Dining/Kitchen
Master Bedroom
En-suite
Bedroom 01
Bathroom

From 39.85 to 49.83 sq.m.
5.15 m x 6.65 m
3.60 m x 4.20 m
1.70 m x 2.70 m
3.60 m x 4.20 m
1.70 m x 2.70 m



LEVEL 06

2 BEDROOM APARTMENT/TYPE B



APARTMENT

602

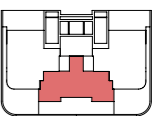
Floorplan location - Levels 06

TOTAL AREA

147.73 sq.m.

Veranda
Living/Dining/Kitchen
Master Bedroom
En-suite
Bedroom 01
Bathroom

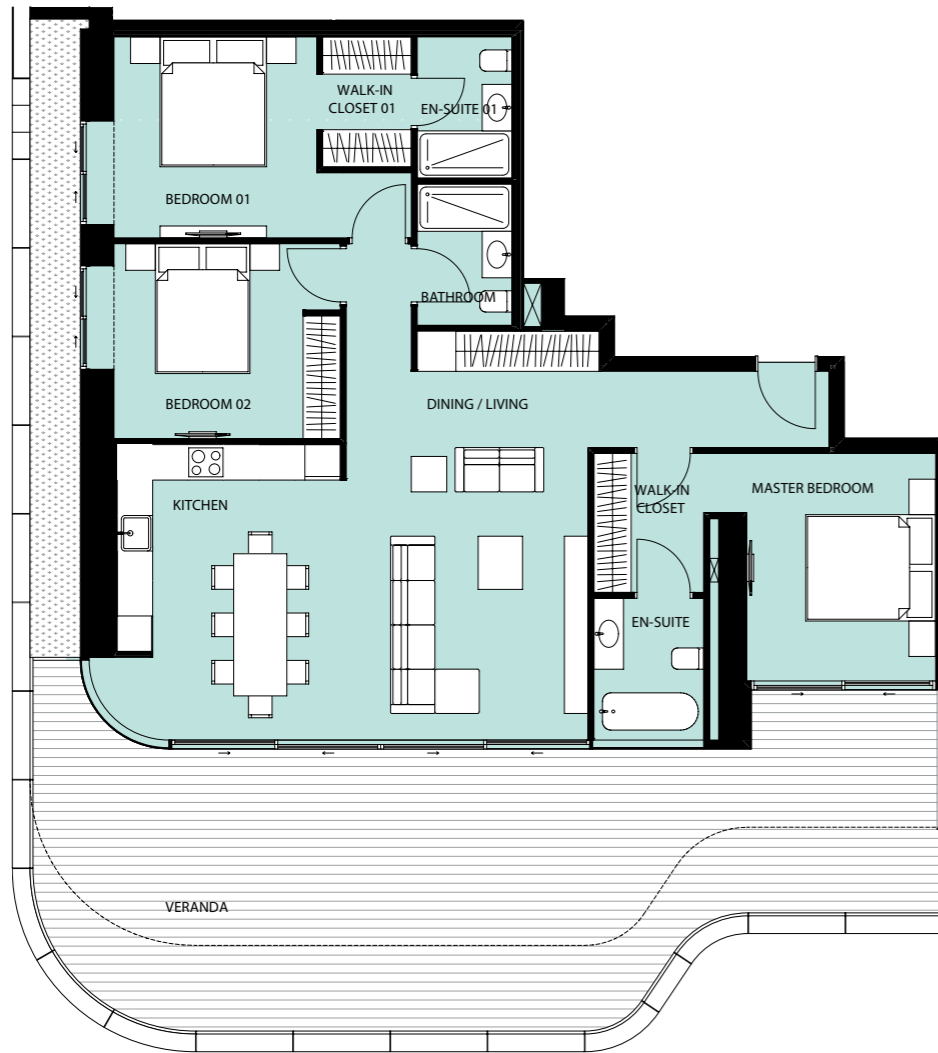
47.94 sq.m.
5.40 m x 6.65 m
3.40 m x 4.10 m
1.70 m x 2.70 m
3.40 m x 4.10 m
1.70 m x 2.70 m



Floor plans shown are for approximate measurements only. Exact layout and sizes may vary. All measurements may vary within a tolerance of 5%.

LEVEL 02

3 BEDROOM APARTMENT (WEST)/TYPE C



APARTMENT

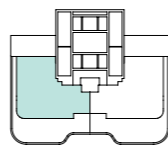
201

Floorplan location - Level 02

TOTAL AREA

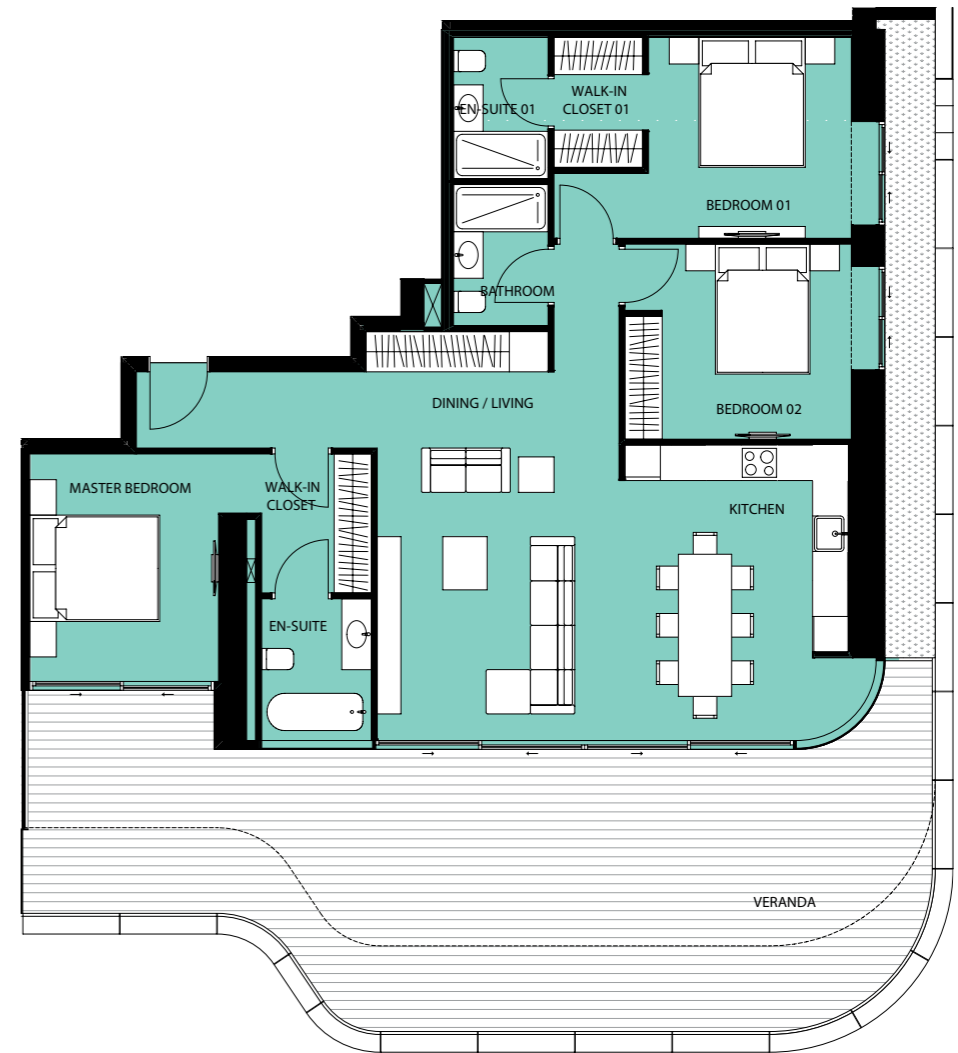
211.66 sq.m.

Veranda	69.01 sq.m.
Living/Dining/Kitchen	5.00 m x 7.95 m
Master Bedroom	3.20 m x 3.85 m
Walk-in Closet	1.90 m x 2.35 m
En-suite	1.90 m x 2.40 m
Bedroom 01	3.40 m x 3.45 m
Walk-in Closet 01	1.60 m x 2.20 m
En-suite 01	1.60 m x 2.40 m
Bedroom 02	3.30 m x 3.85 m
Bathroom	1.60 m x 2.40 m



LEVEL 02

3 BEDROOM APARTMENT (EAST)/TYPE C



APARTMENT

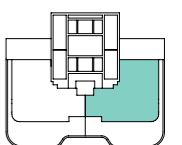
202

Floorplan location - Levels 02

TOTAL AREA

211.66 sq.m.

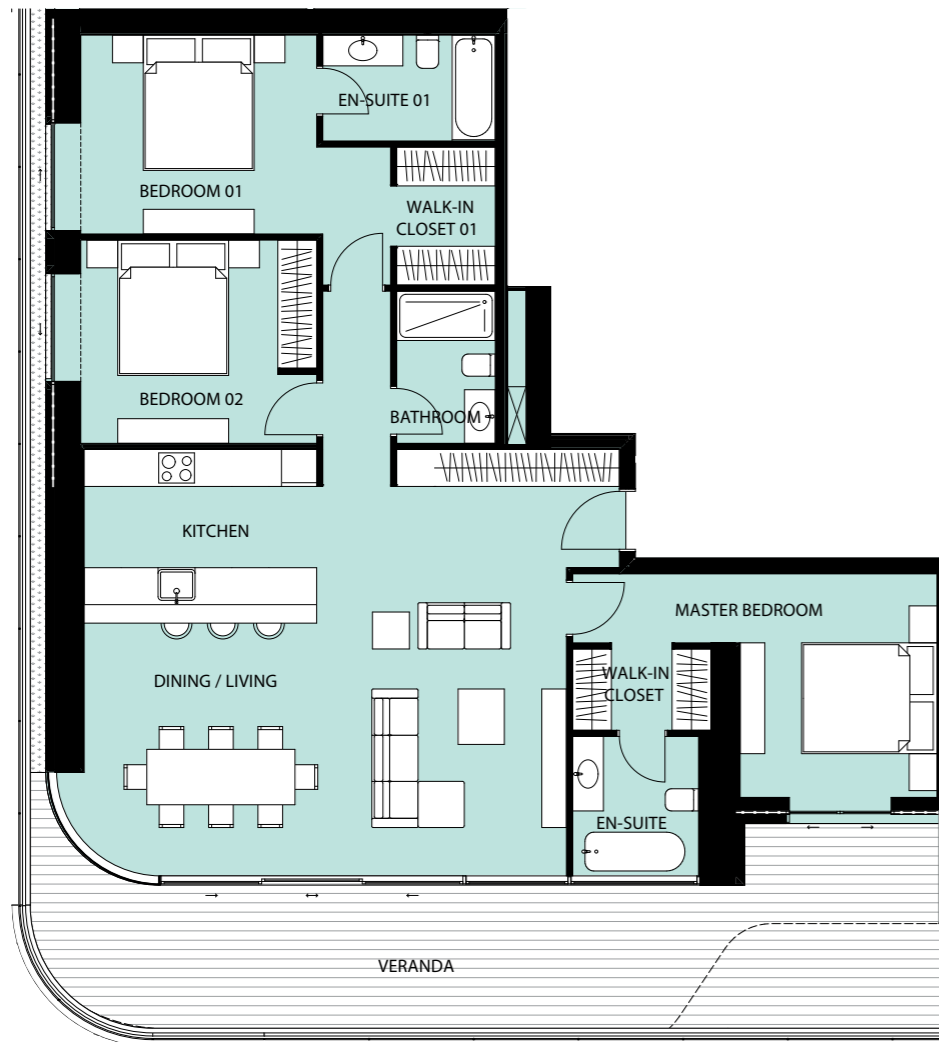
Veranda	69.01 sq.m.
Living/Dining/Kitchen	5.00 m x 7.95 m
Master Bedroom	3.20 m x 3.85 m
Walk-in Closet	1.90 m x 2.35 m
En-suite	1.90 m x 2.40 m
Bedroom 01	3.40 m x 3.45 m
Walk-in Closet 01	1.60 m x 2.20 m
En-suite 01	1.60 m x 2.40 m
Bedroom 02	3.30 m x 3.85 m
Bathroom	1.60 m x 2.40 m



Floor plans shown are for approximate measurements only. Exact layout and sizes may vary. All measurements may vary within a tolerance of 5%.

LEVEL 05

3 BEDROOM APARTMENT (WEST)/TYPE C



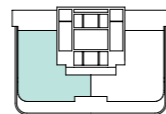
APARTMENT

501

Floorplan location - Level 05

TOTAL AREA

183.98 sq.m.



Veranda	45.36 sq.m.
Living/Dining/Kitchen	6.65 m x 7.80 m
Master Bedroom	3.20 m x 3.80 m
Walk-in Closet	1.30 m x 2.25 m
En-suite	2.05 m x 2.25 m
Bedroom 01	3.40 m x 3.80 m
Walk-in Closet 01	1.60 m x 2.20 m
En-suite 01	1.70 m x 2.80 m
Bedroom 02	3.30 m x 3.85 m
Bathroom	1.60 m x 2.40 m

LEVEL 05

3 BEDROOM APARTMENT (EAST)/TYPE C



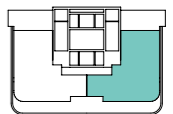
APARTMENT

502

Floorplan location - Levels 05

TOTAL AREA

183.97 sq.m.

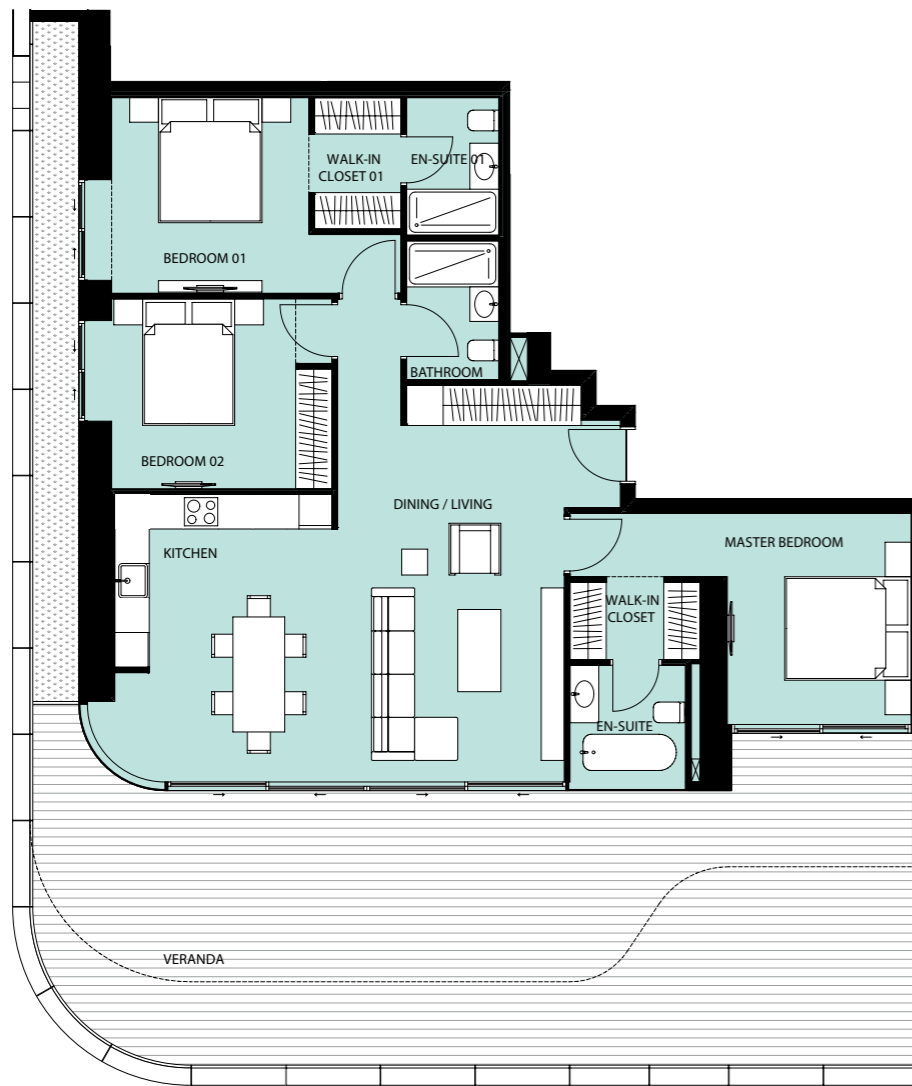


Veranda	45.36 sq.m.
Living/Dining/Kitchen	6.65 m x 7.80 m
Master Bedroom	3.20 m x 3.80 m
Walk-in Closet	1.30 m x 2.25 m
En-suite	2.05 m x 2.25 m
Bedroom 01	3.40 m x 3.80 m
Walk-in Closet 01	1.60 m x 2.20 m
En-suite 01	1.70 m x 2.80 m
Bedroom 02	3.30 m x 3.85 m
Bathroom	1.60 m x 2.40 m

Floor plans shown are for approximate measurements only. Exact layout and sizes may vary. All measurements may vary within a tolerance of 5%.

LEVEL 07, 09

3 BEDROOM APARTMENT (WEST)/TYPE C



APARTMENT

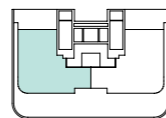
701, 901

Floorplan location - Level 07, 09

TOTAL AREA

From 208.68 to 215.87 sq.m.

Veranda From	68.68 to 78.18 sq.m.
Living/Dining/Kitchen	6.90 m x 7.80 m
Master Bedroom	3.20 m x 3.70 m
Walk-in Closet	1.35 m x 2.25 m
En-suite	2.00 m x 2.05 m
Bedroom 01	3.40 m x 3.40 m
Walk-in Closet 01	1.50 m x 2.30 m
En-suite 01	1.60 m x 2.40 m
Bedroom 02	3.30 m x 3.85 m
Bathroom	1.60 m x 2.40 m



LEVEL 07, 09

3 BEDROOM APARTMENT (EAST)/TYPE C



APARTMENT

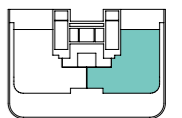
702, 902

Floorplan location - Level 07, 09

TOTAL AREA

From 208.69 to 215.84 sq.m.

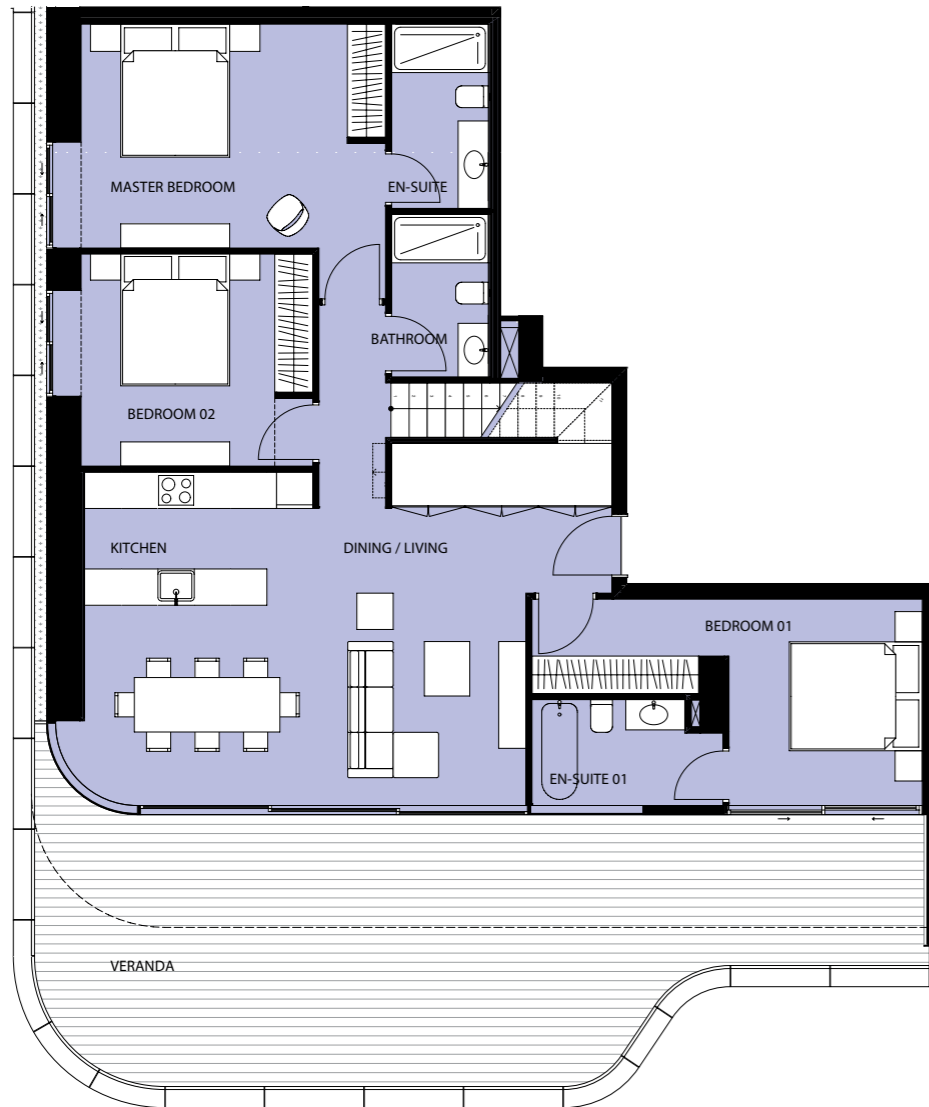
Veranda From	68.68 to 78.18 sq.m.
Living/Dining/Kitchen	6.90 m x 7.80 m
Master Bedroom	3.20 m x 3.70 m
Walk-in Closet	1.35 m x 2.25 m
En-suite	2.00 m x 2.05 m
Bedroom 01	3.40 m x 3.40 m
Walk-in Closet 01	1.50 m x 2.30 m
En-suite 01	1.60 m x 2.40 m
Bedroom 02	3.30 m x 3.85 m
Bathroom	1.60 m x 2.40 m



Floor plans shown are for approximate measurements only. Exact layout and sizes may vary. All measurements may vary within a tolerance of 5%.

LEVEL 10

PENTHOUSE (LOWER LEVEL WEST)/TYPE D



APARTMENT

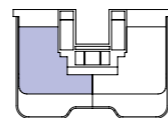
1001

Floorplan location - Level 10

TOTAL AREA

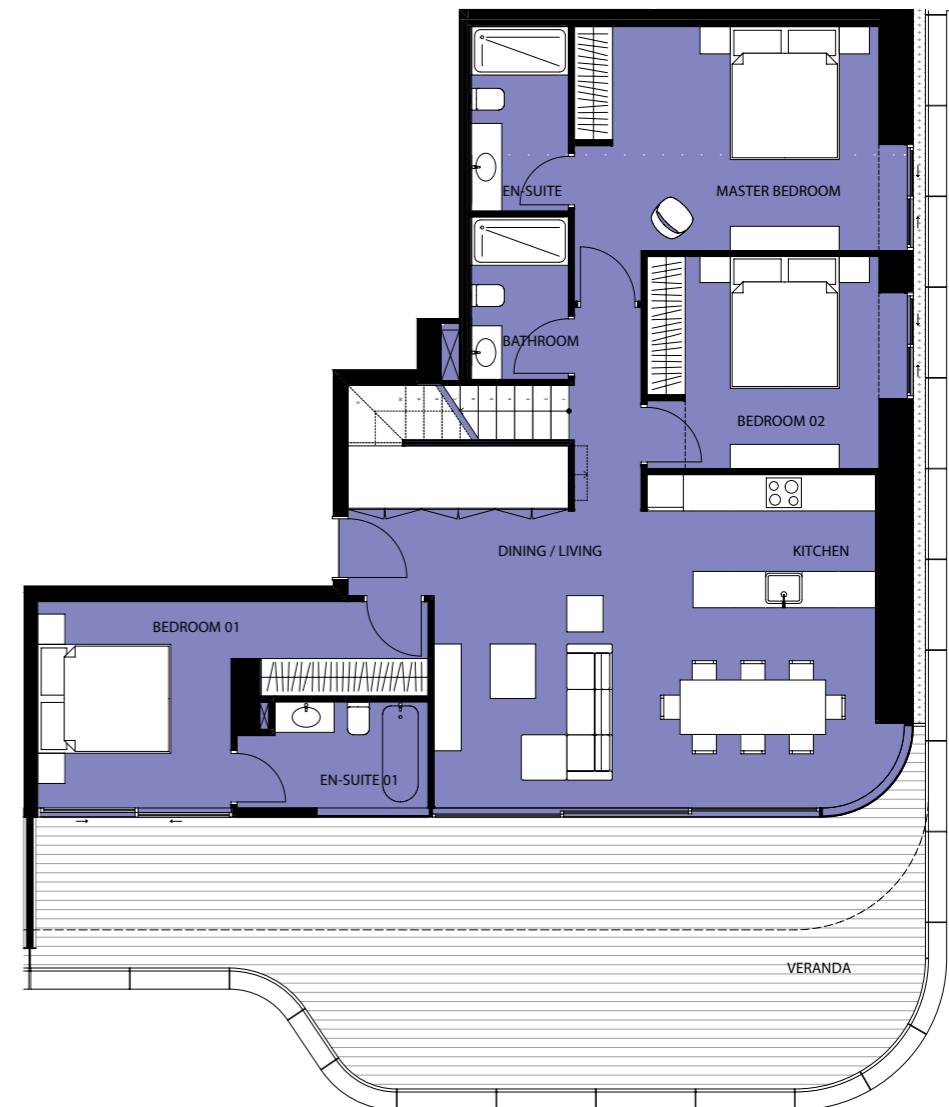
409.92 sq.m.

Veranda	57.85 sq.m.
Living/Dining/Kitchen	5.50 m x 7.30 m
Master Bedroom	3.70 m x 5.00 m
En-suite	1.60 m x 3.05 m
Bedroom 01	3.20 m x 3.40 m
En-suite 01	1.80 m x 3.15 m
Bedroom 02	3.50 m x 3.85 m
Bathroom	1.60 m x 2.70 m



LEVEL 10

PENTHOUSE (LOWER LEVEL EAST)/TYPE D



APARTMENT

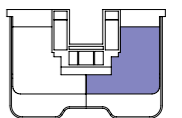
1002

Floorplan location - Level 10

TOTAL AREA

409.92 sq.m.

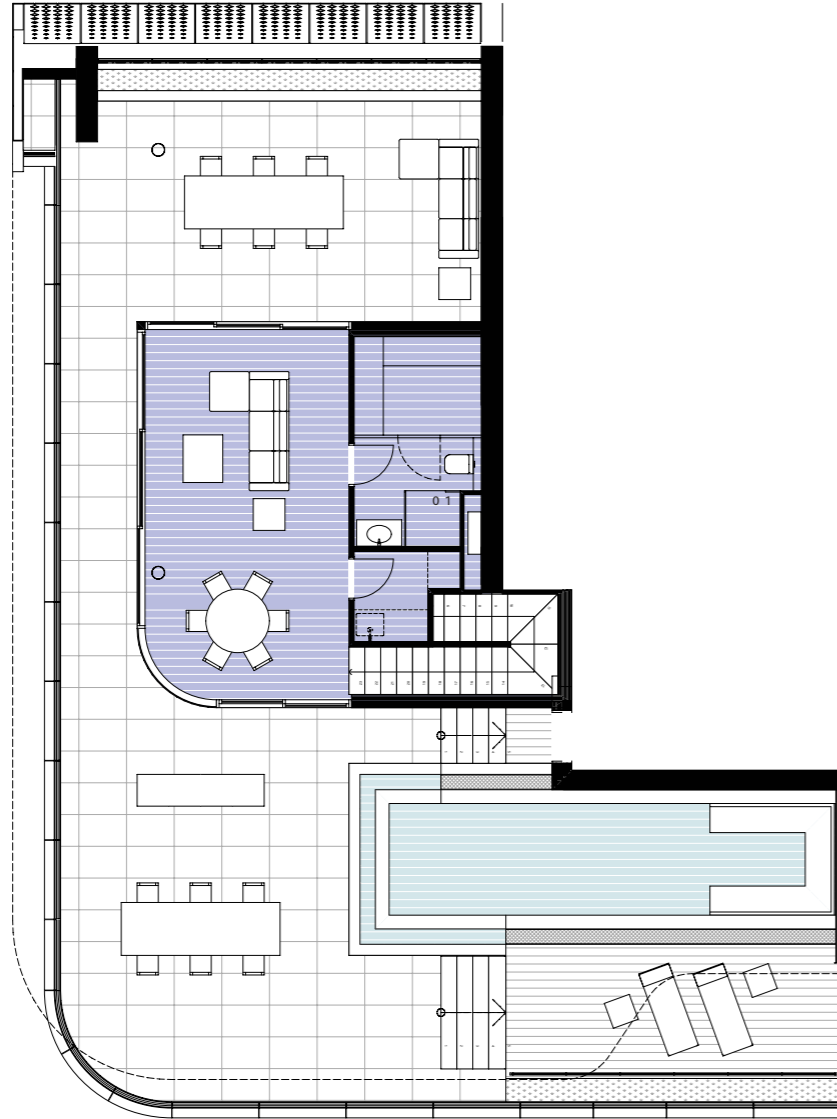
Veranda	57.85 sq.m.
Living/Dining/Kitchen	5.50 m x 7.30 m
Master Bedroom	3.70 m x 5.00 m
En-suite	1.60 m x 3.05 m
Bedroom 01	3.20 m x 3.40 m
En-suite 01	1.80 m x 3.15 m
Bedroom 02	3.50 m x 3.85 m
Bathroom	1.60 m x 2.70 m



Floor plans shown are for approximate measurements only. Exact layout and sizes may vary. All measurements may vary within a tolerance of 5%.

LEVEL II

PENTHOUSE (UPPER LEVEL WEST)/TYPE D



APARTMENT

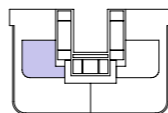
1001

Floorplan location - Level II

TOTAL AREA

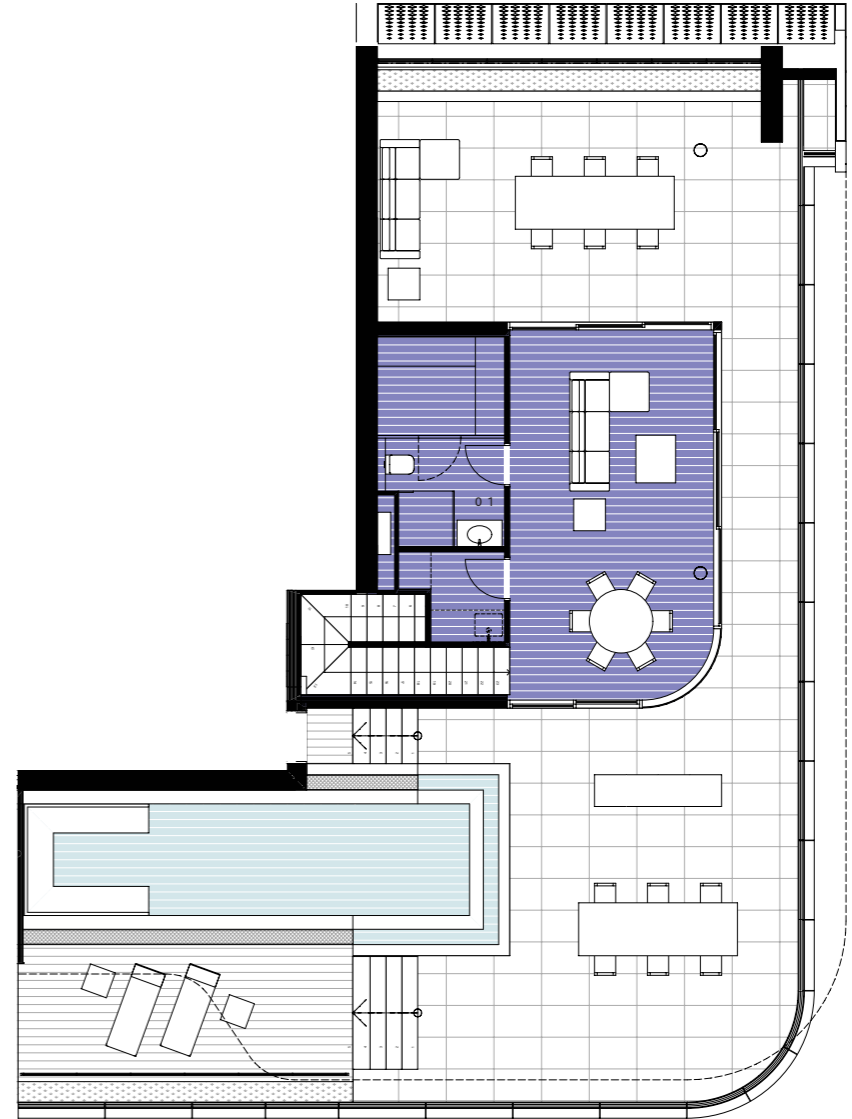
409.92 sq.m.

Rooftop Veranda	141.33 sq.m.
Covered Veranda	8.98 sq.m
Living/Dining	3.85 m x 7.00 m
Bathroom 01	2.05 m x 2.40 m
Sauna	1.85 m x 2.40 m
Pantry	1.70 m x 2.00 m



LEVEL II

PENTHOUSE (UPPER LEVEL EAST)/TYPE D



APARTMENT

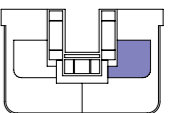
1002

Floorplan location - Level II

TOTAL AREA

409.92 sq.m.

Rooftop Veranda	141.33 sq.m.
Covered Veranda	8.98 sq.m
Living/Dining	3.85 m x 7.00 m
Bathroom 01	2.05 m x 2.40 m
Sauna	1.85 m x 2.40 m
Pantry	1.70 m x 2.00 m



Floor plans shown are for approximate measurements only. Exact layout and sizes may vary. All measurements may vary within a tolerance of 5%.



5

INTERIORS



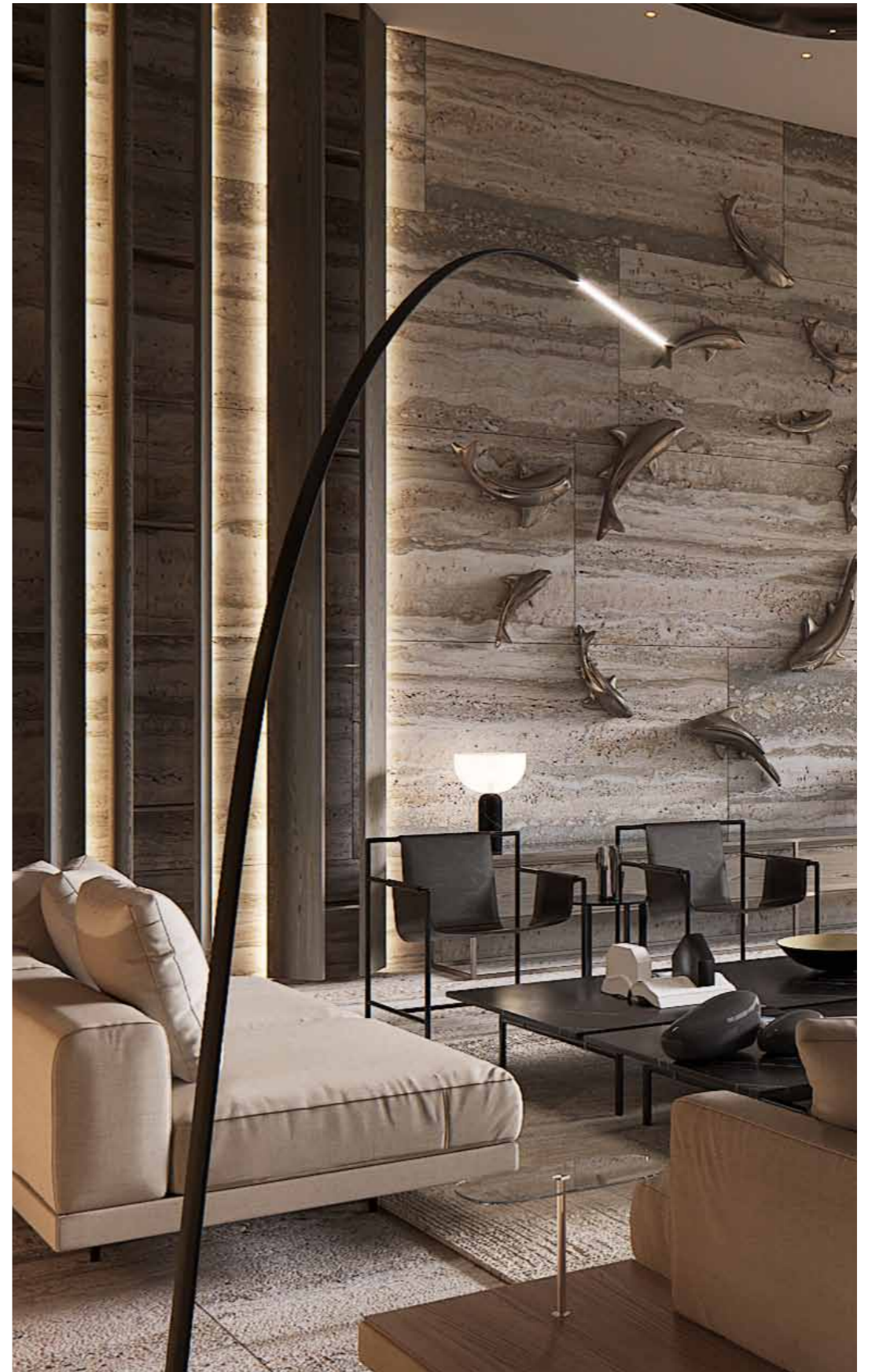
*All 3D images consist of indicative information and the project can differ insignificantly from the displayed images

LOBBY

The concierge sits at a reception desk to greet residents and guests alike. Inspirational creation along with breathtaking glow that blends colour, texture and dynamic light effects.



Enjoy the privacy and comfort of your own apartment as well as the full range of hotel facilities along with an ambiance that expresses sophistication. This astounding entrance space creates an atmosphere of elegance and luxury.



*All 3D images consist of indicative information and the project can differ insignificantly from the displayed images



*All 3D images consist of indicative information and the project can differ insignificantly from the displayed images



INDOOR SWIMMING POOL

Marco Polo's residents will enjoy luxurious spa and health facilities such as a tranquil heated indoor swimming pool and gym. The indoor heated pool gives ample natural light through large floor to ceiling windows expressing a picturesque view of contemporary designed gardens.

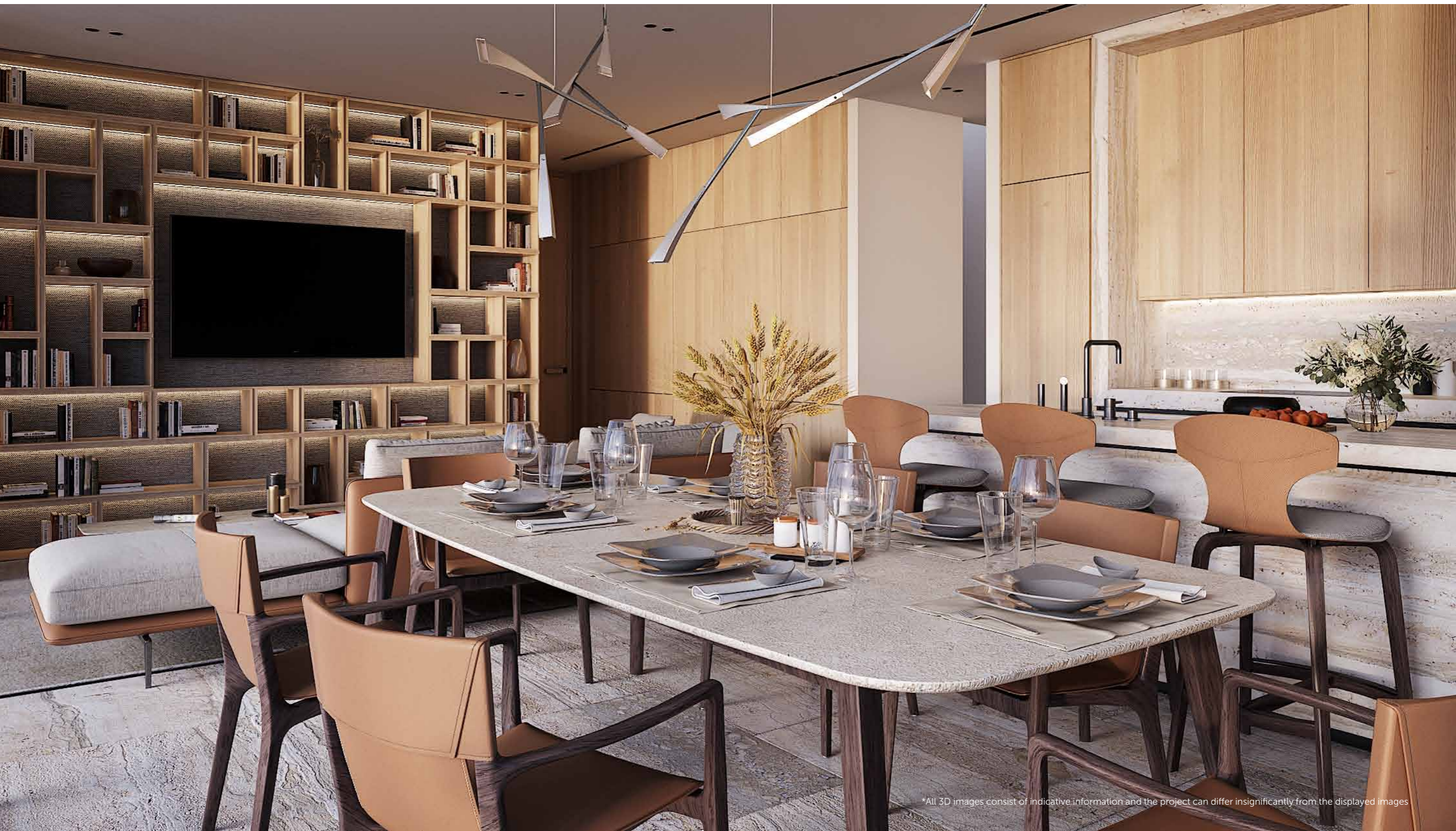


*All 3D images consist of indicative information and the project can differ insignificantly from the displayed images

DUPLEX

Each designing luxury duplex enjoys spacious private verandas with sew views and exquisite quality layouts which will leave those who value their lives in true comfort and style. Every duplex is delivered with signature top standard finishes: semi-solid parquet floors, natural stone walls and floors in the bathrooms, high ceilings and two-tier windows, through which the space will be filled with ample natural light.





*All 3D images consist of indicative information and the project can differ insignificantly from the displayed images

Marco Polo offers a private enclave of luxury contemporary dining where breathtaking views over Limassol's Mediterranean sea define a style of living that embraces both elegance and natural beauty. Floor to ceiling windows ready to be enriched by your vision expresses a sensational lifestyle experience.

Combined open plan kitchen, living and dining spaces reflect a contemporary approach to food preparation and entertaining. Marco Polo expresses a heaven on earth that offers the chic elite lifestyle that simply defines luxury living.



Surrounded by endless crystal blue waters of the Mediterranean sea. Marco Polo luxury residences have been designed to enhance your senses of vision by using sensational water views as your backdrop.





*All 3D images consist of indicative information and the project can differ insignificantly from the displayed images





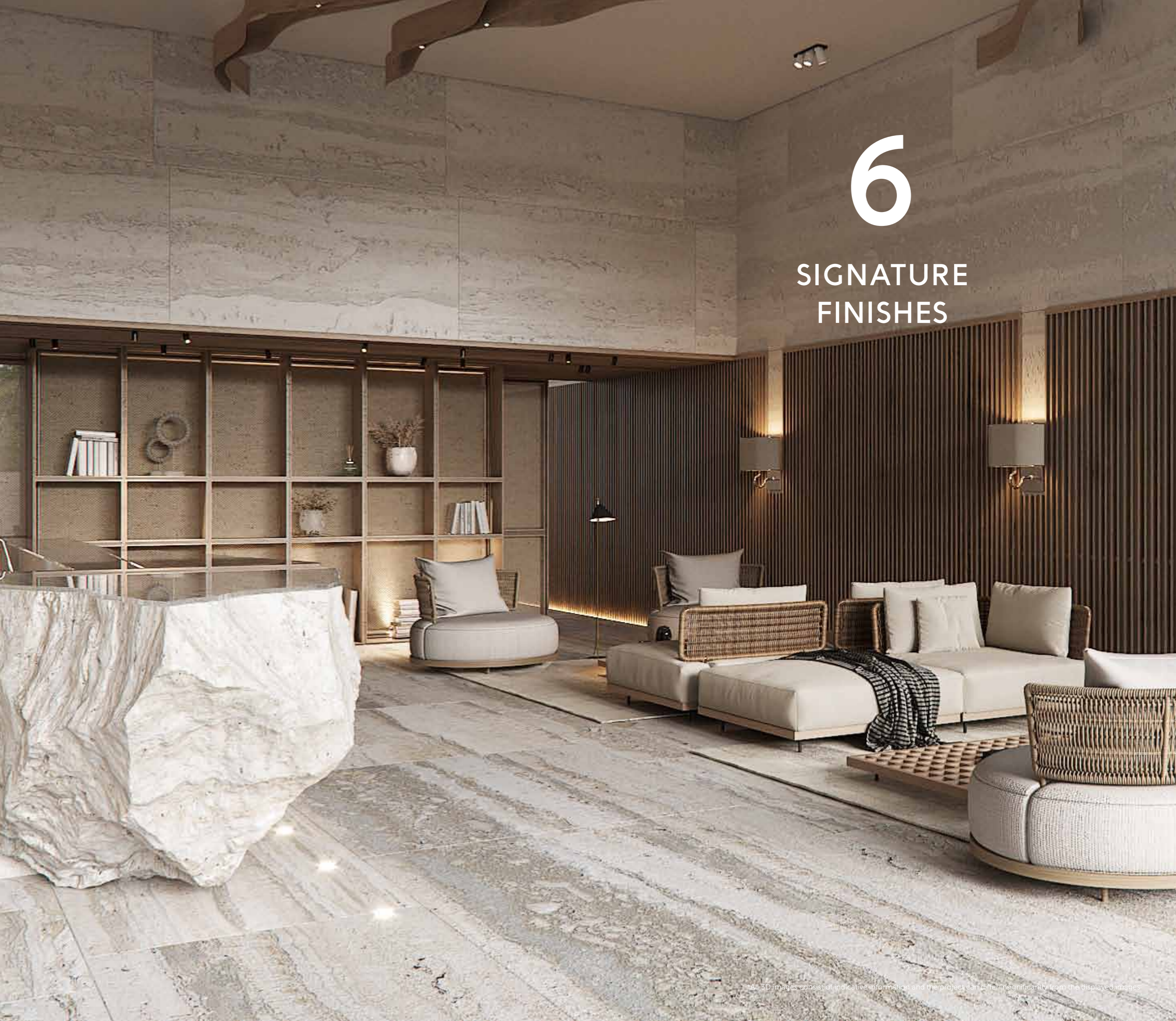
*All 3D images consist of indicative information and the project can differ insignificantly from the displayed images



All Marco Polos residences welcome you with exquisite efficient functional floor plans, top of the line luxury finishes, gourmet quality kitchens, luxuriously appointed baths, and floor to ceiling windows enhanced by stunning views of our endless crystal clear waters.

6

SIGNATURE FINISHES





NOTE: Movable furniture, home appliances & interior items are extras

ELEGANCE PACKAGE

EVERY PROPERTY IS DELIVERED WITH SIGNATURE TOP STANDARD FINISHES:

- | Fully completed finishings
- | Semisolid parquet floors in each room
- | Floor and walls in the toilets and bathrooms is natural stone
- | High ceilings (3.15 m.)
- | Security and fireproof entrance doors
- | Intercom system
- | Water underfloor heating
- | Central VRF conditioning

- | High standard sanitary ware from European brands
- | Thermal aluminium window frames with double glazing
- | High standard kitchen cabinets
- | High standard wardrobes from European brands
- | Soft closers for kitchen units
- | Penthouses enjoy private roof terraces with pools



NOTE: Movable furniture, home appliances & interior items are extras

SIGNATURE PENTHOUSES

WE HAVE REIMAGINED THE IDEA OF WHAT A PENTHOUSE SHOULD REPRESENT. THE SIGNATURE PENTHOUSES ARE FEATURED ALMOST IN ALL APARTMENT DEVELOPMENTS AND REPRESENT THE BEST CHOICE FOR A DEMANDING AND SOPHISTICATED CUSTOMER WHO EXPECTS THE BEST OF COMFORT, STYLE AND PRIVACY.


THE SIGNATURE PENTHOUSES:

- | Sizable roof space
- | Decking floors
- | Mosaic tiled swimming pool with jacuzzi
- | Barbecue

MARCO
POLO
HIGH LIFE
APARTMENTS



28 Ampelakion Street, Germasogeia,
4046 Limassol, P.O.Box 70649, Cyprus
Fax: +357 25 315 301

Office: +357 25 315 318
sales@prime-property.com
 [prime.property.group.ltd](https://www.facebook.com/prime.property.group.ltd)