



capri



bbf:



a new seafront location at your doorstep

:capri

An astonishing modern complex with breathtaking views at the mediterranean sea and captivating surroundings

Built and designed to enjoy seafront living at its best. :capri is a work of outstanding artistry and modern design. Inspired by its location, this stunning establishment is located next to St. Raphael Marina offering iconic residential and commercial luxury living or lifestyle.



:capri is an elegant complex that contains only 5 apartments and 2 luxurious penthouses with private pools. Each apartment will have two parking spaces, a storage room, and a storage room on the ground floor. The indoor facilities include communal swimming pool, gym and a sauna.



major benefits

- First line beachfront location;
- Breathtaking unobstructed sea views;
- High-end neighborhood with the best 5-star hotels;
- Communal swimming pool, gym and a sauna;

- High standards of finish;
- Maid's room on the ground floor of each apartment;
- High-quality built-in furniture;
- Penthouses with private roof gardens and swimming pools.



◉ exterior

**The indoor facilities include
communal swimming pool,
gym and a sauna**



:location

This inspirational development is located on the first line beachfront next to St. Raphael Marina

The project is located adjacent to St. Raphael Marina which is 9 kilometers East of Limassol centre and is part of the luxury 5-star St. Raphael Resort. The prime location, direct access to the beach and spectacular sea views are just some of the upscale and unpretentious vibes that define luxury living.



location

First line beachfront
location



◉ exterior

**Refined urban living at your doorstep
with exquisite surroundings and endless
sea views**



*All 3D images and photographs consist of indicative information and the project can differ insignificantly from the displayed images. Furniture and interior items are extras. The type of materials and colors used in the finishes may vary from the displayed images and text

◉ exterior



**:capri boasts only 5 apartments
and 2 luxurious penthouses
with private pools**



*All 3D images and photographs consist of indicative information and the project can differ insignificantly from the displayed images. Furniture and interior items are extras. The type of materials and colors used in the finishes may vary from the displayed images and text

• exterior

**High-end neighborhood
with the best 5-star hotels**



• exterior

**Refined urban living at your
doorstep with exquisite surroundings
and endless sea views**



◉ exterior

The penthouses enjoy spacious roof gardens, private swimming pools and breathtaking panoramic views of the Mediterranean sea

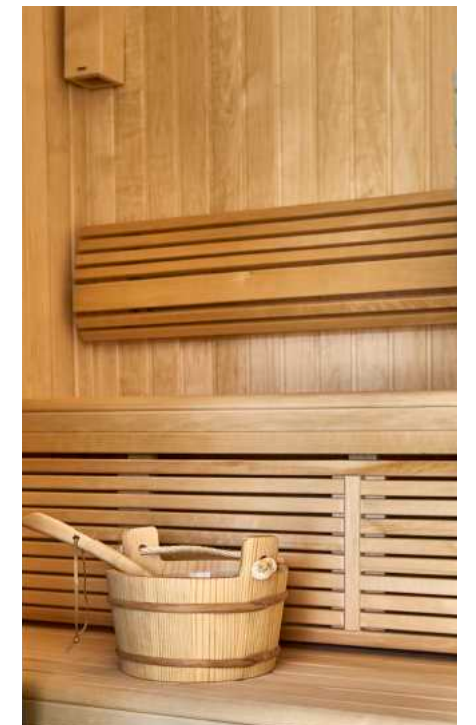


◉ exterior



• resident facilities

The building offers outdoor swimming pool, secure covered parking, a fully equipped gym and a sauna



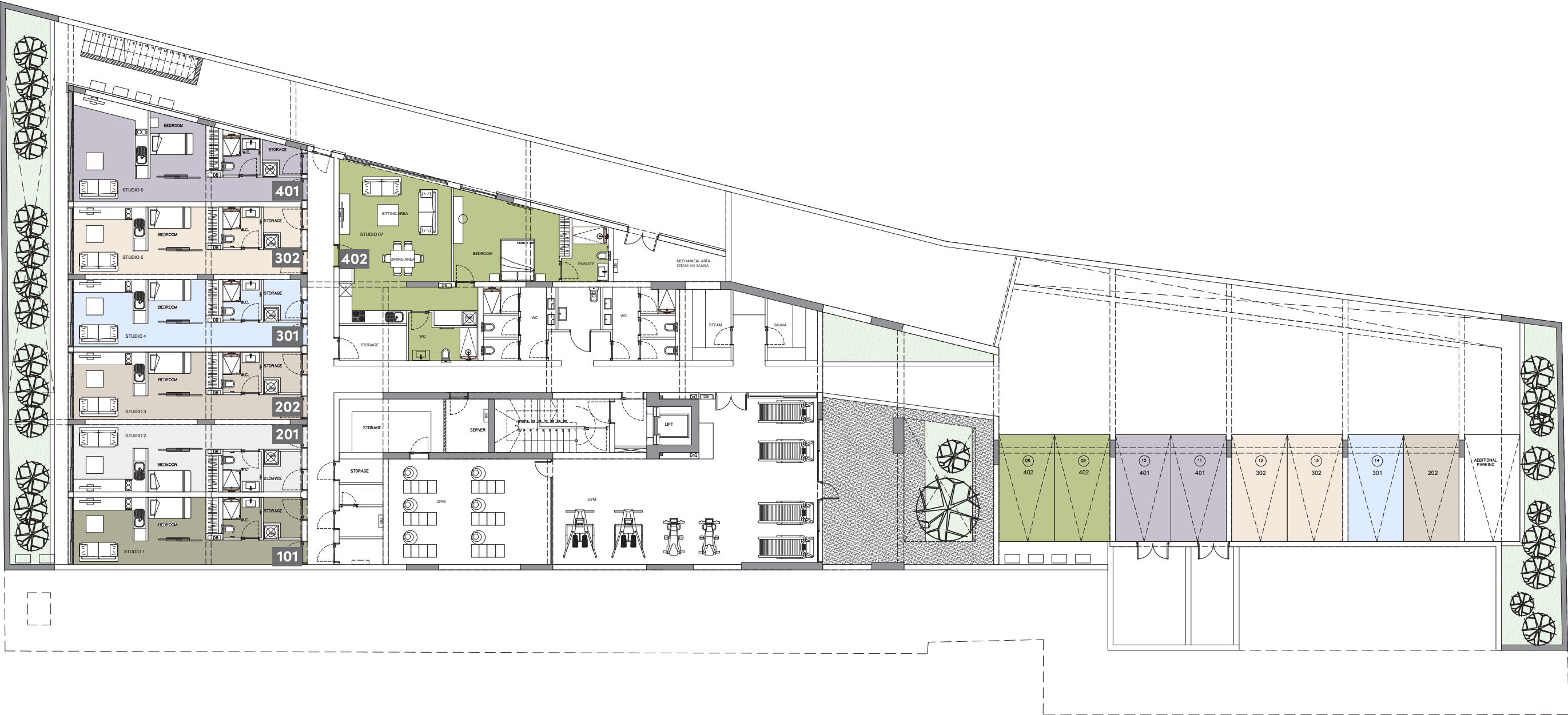
choice of properties

UNIT NO	PROP-ERTY TYPE	BED-ROOMS	BATH-ROOMS	NO OF PARK SPACES	PRIVATE POOL	INDOOR AREA M ²	COV. VERANDA M ²	AUXILIARY AREA M ²	PLANT-ER AREA M ²	ROOF TER-RACE M ²	BASE-MENT AUXILLI-ARY M ²	TOTAL AREA M ²
101	Apartment	2	4	2		109.00	47.00	1st 73.14	24.20		39.49	292.83
201	Apartment	3	2	2		116.62	34.00		11.74		38.08	200.45
201 option	Apartment	4	4	4		236.54	47.95		24.76		74.00	398.07
202	Apartment	3	2	2		118.69	30.00		10.82		38.11	197.62
301	Apartment	3	2	2		116.90	34.00		11.71		38.05	200.66
301 option	Apartment	3	4	4		236.54	49.40		27.05		77.00	398.32
302	Apartment	3	2	2		118.72	30.00		10.85		38.09	197.66
401	Penthouse	2	3	2	YES	125.83	25.00	5th 49.27	4.99	71.30	46.91	323.31
402	Penthouse	2	3	2	YES	127.39	21.00	5th 48.99	4.27	68.75	87.01	357.41

NOTE: the areas stated above may slightly differ upon issuance of relevant authority permits

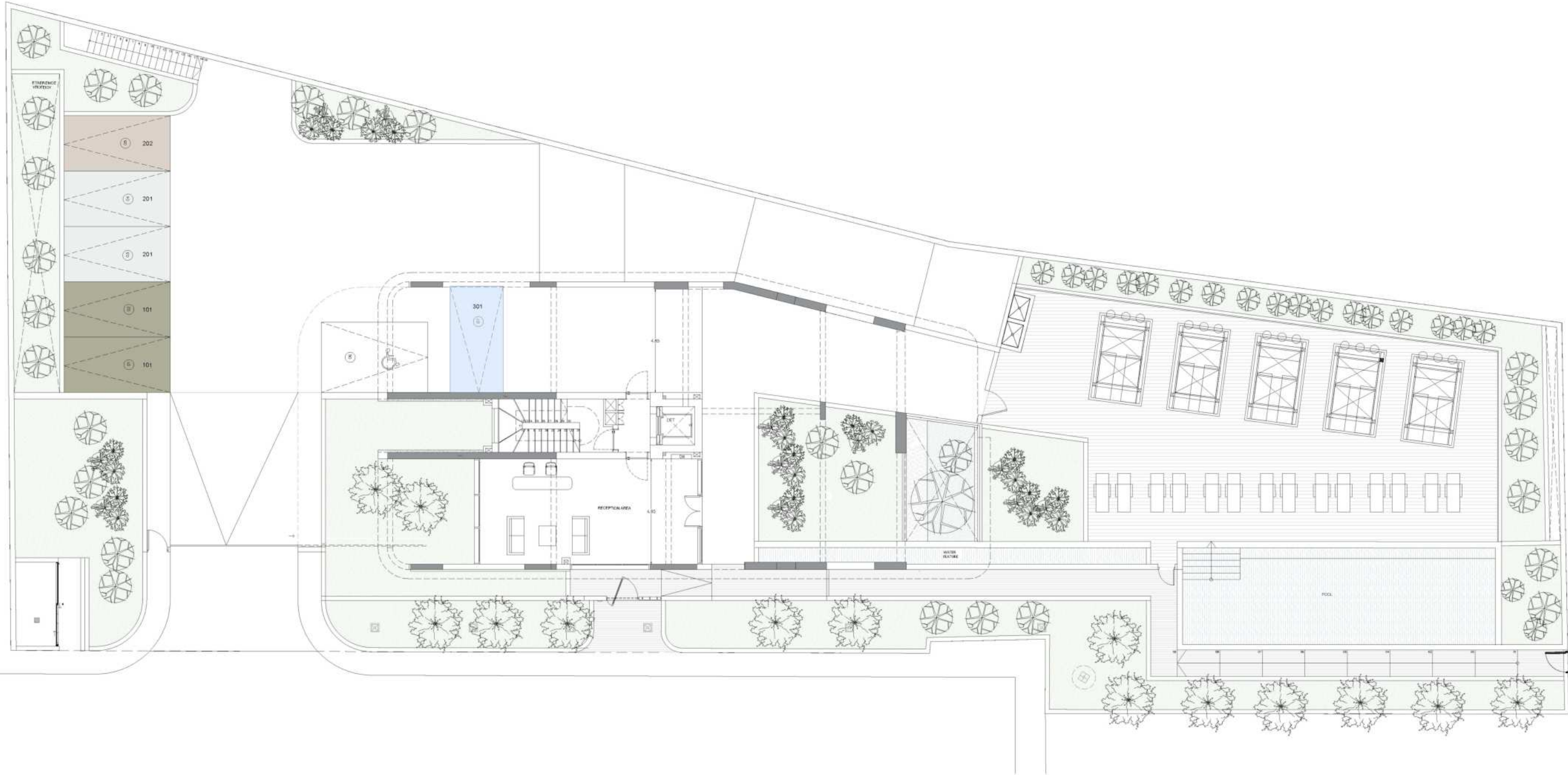


basement



*Floor plans show approximate measurements only. The exact layout and sizes may vary

•ground floor

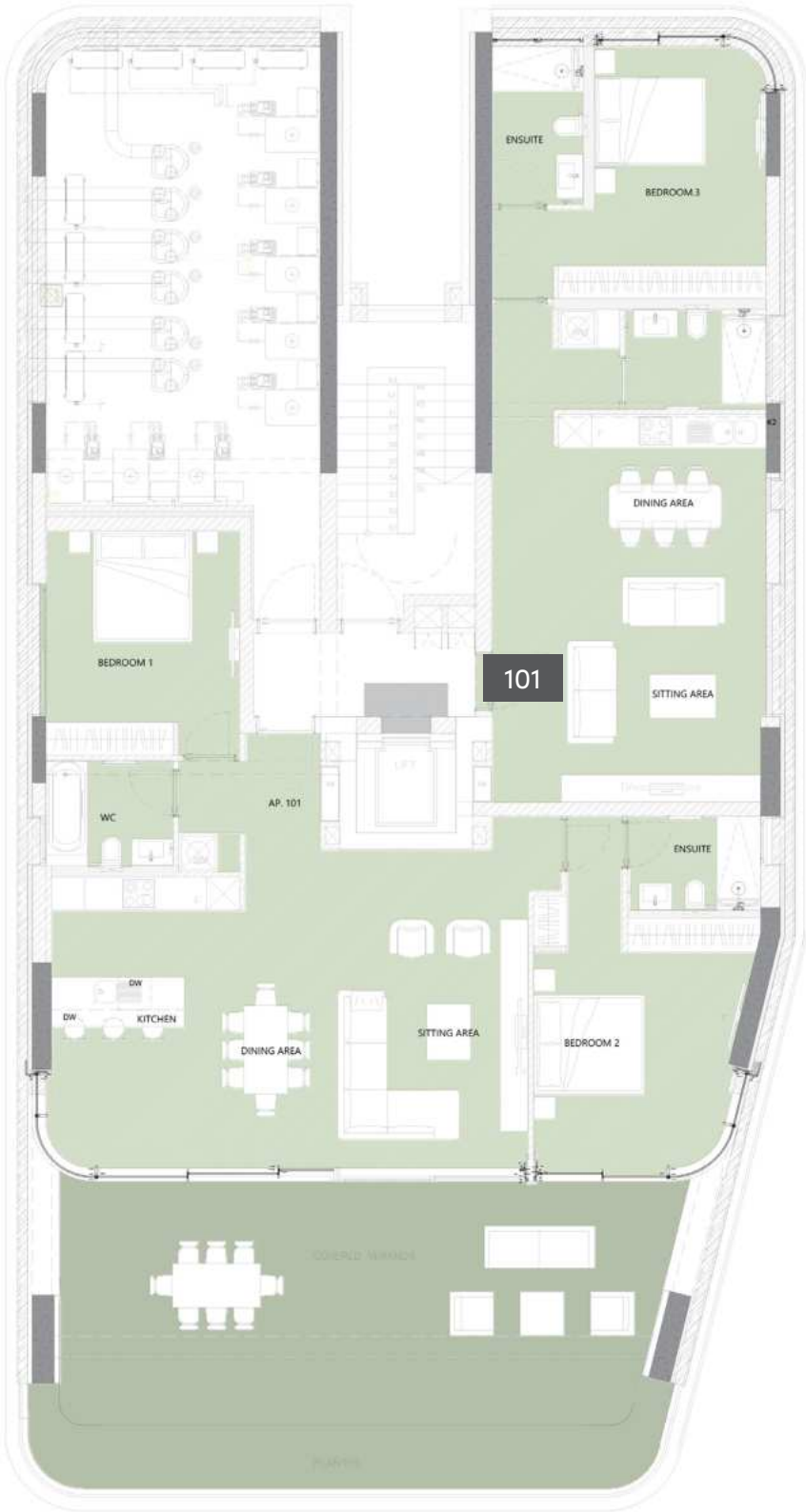


*Floor plans show approximate measurements only. The exact layout and sizes may vary

: floor plans

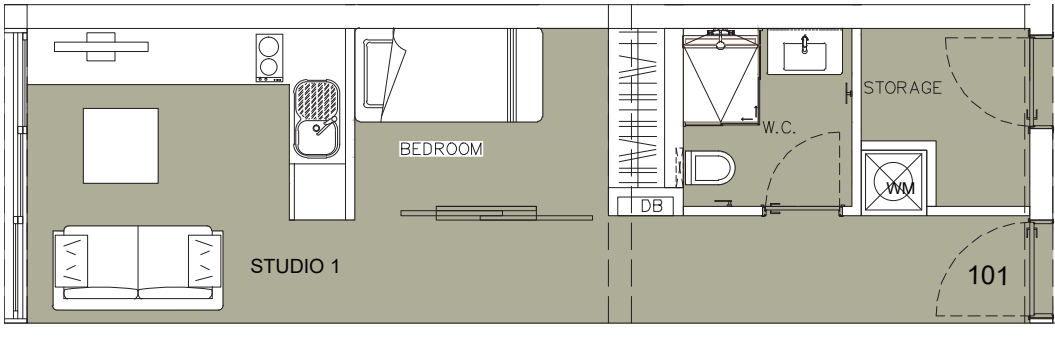
1st floor

Unit N°	Total Area, m²
101	292.83



studio 101

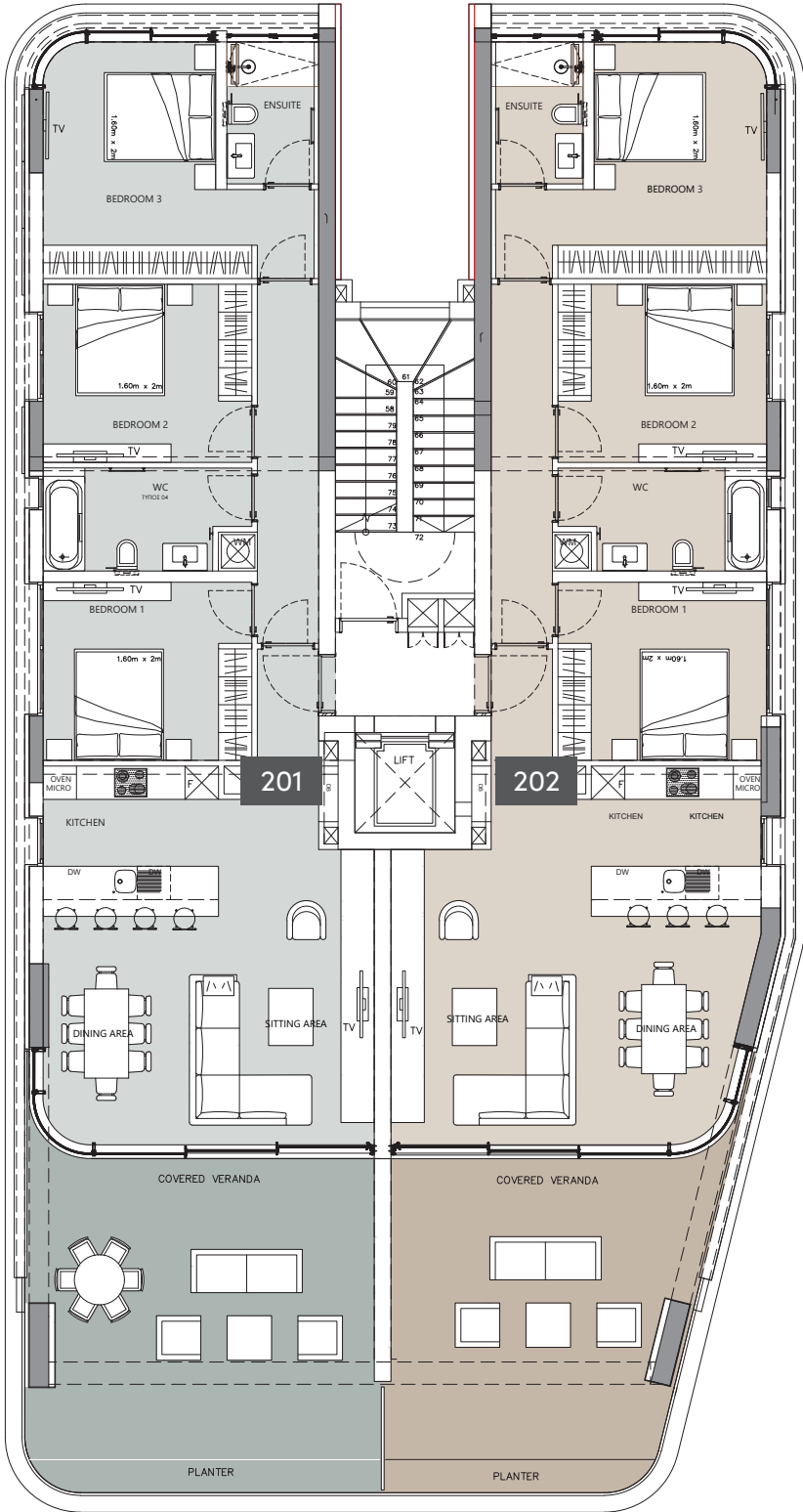
Unit N°	Basement Auxiliary, m²
101	39.49



: floor plans

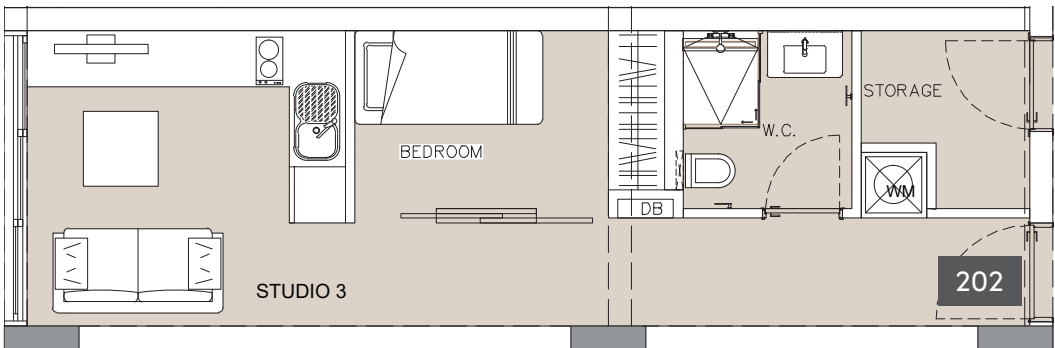
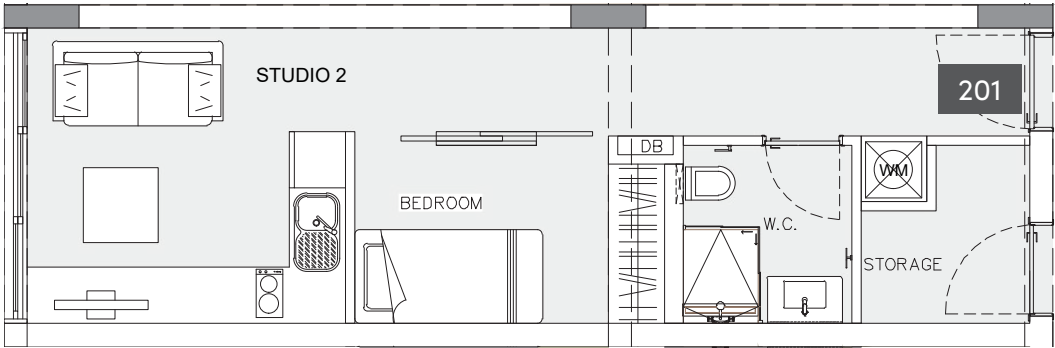
2nd floor

Unit N°	Total Area, m²
201	200.45
202	197.62



studio 201, 202

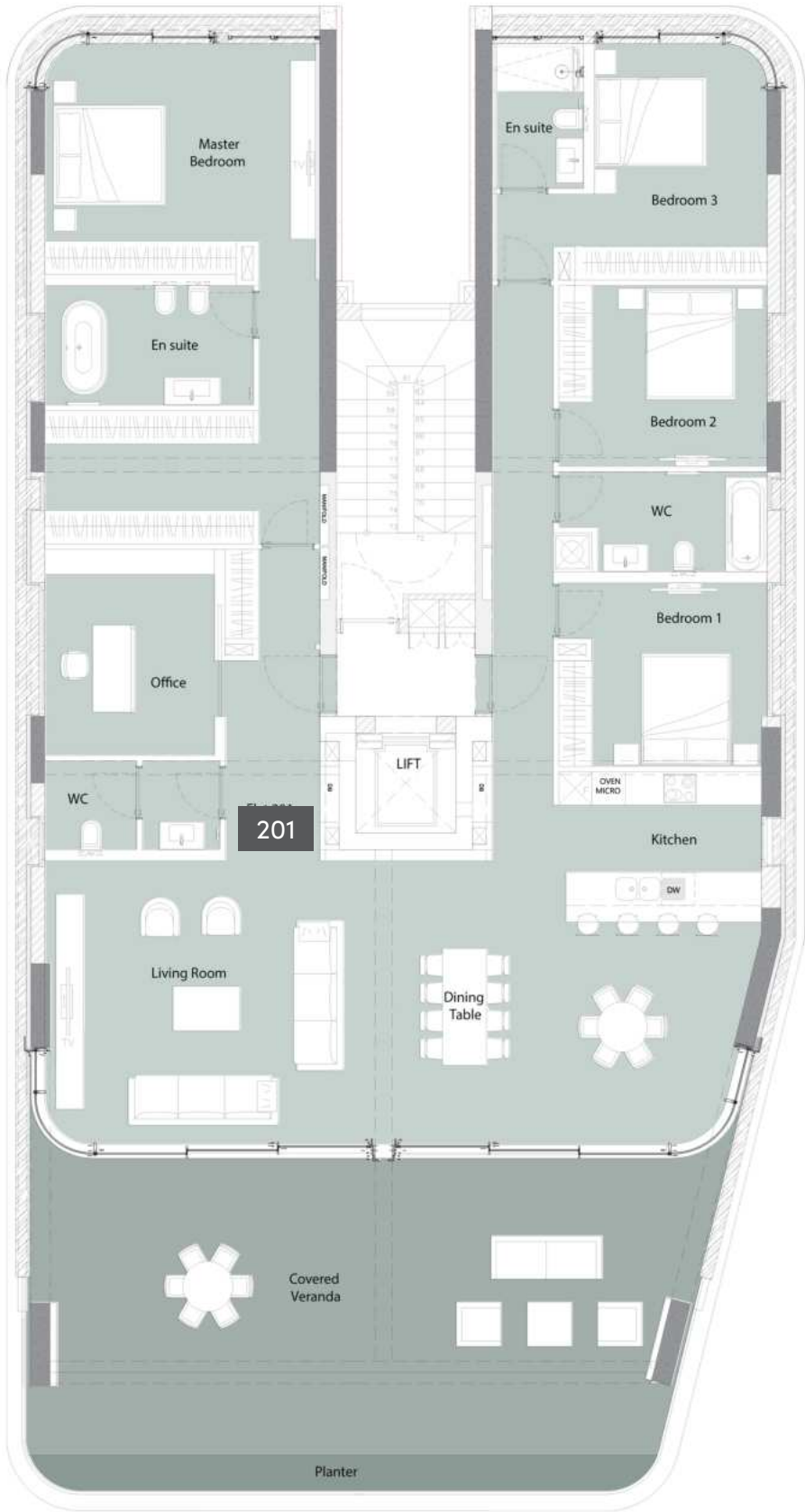
Unit N°	Basement Auxiliary, m²
201	38.08
202	38.11



• floor plans

2nd Floor (option)

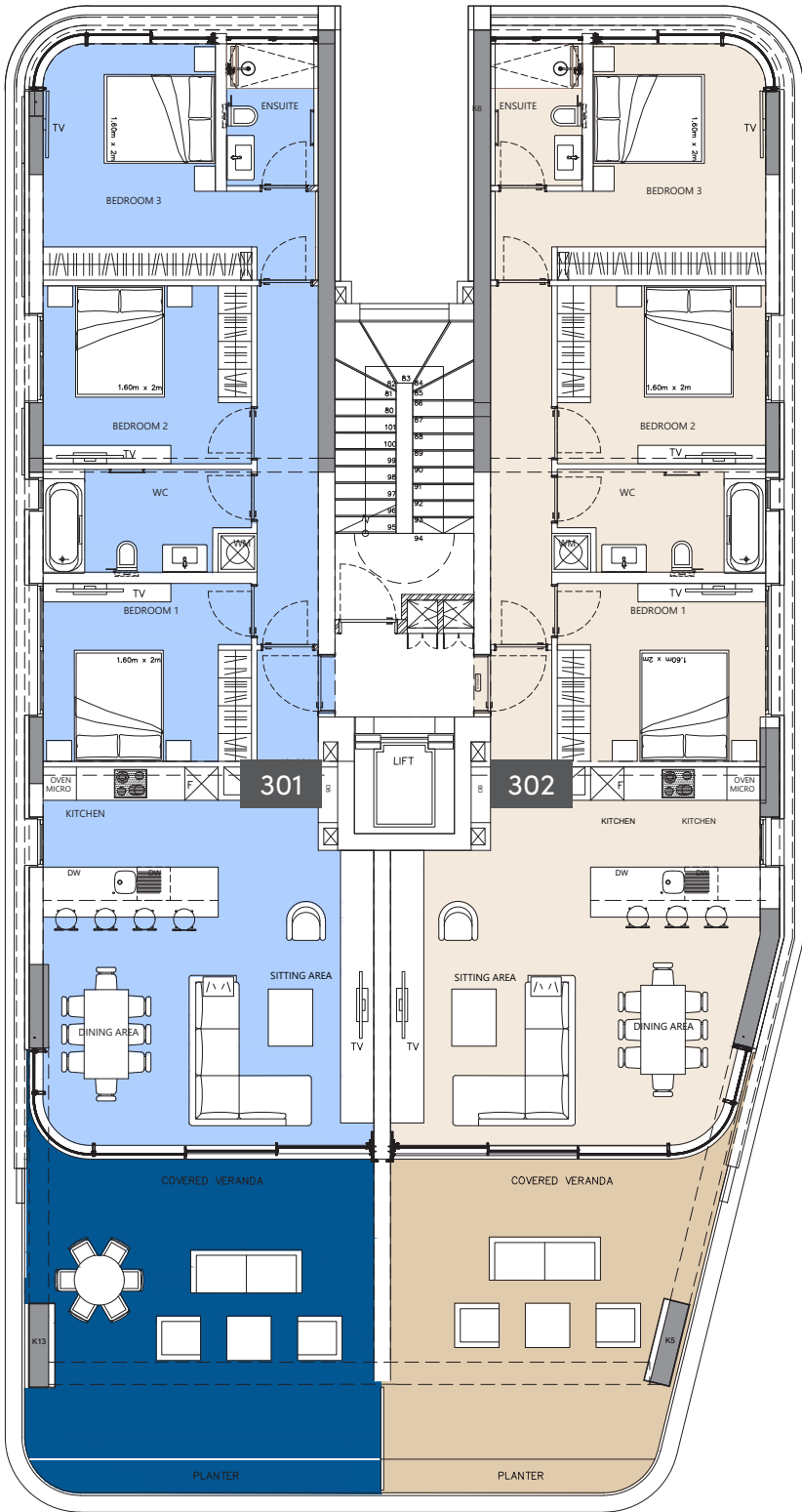
Unit N°	Total Area, m²
201	398.10



• floor plans

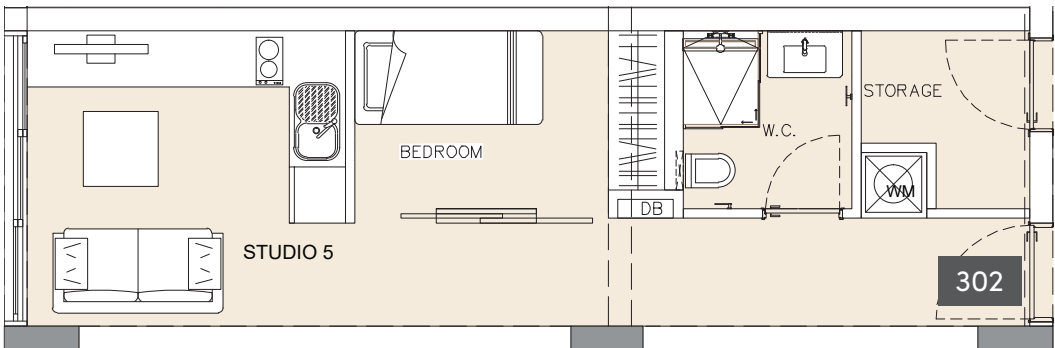
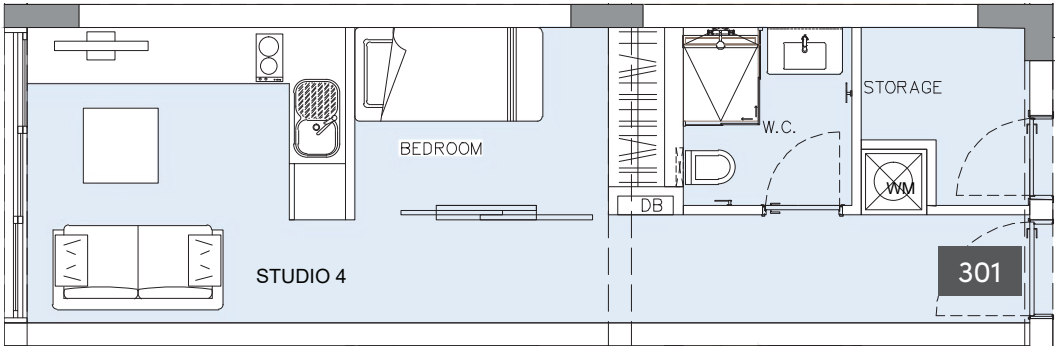
3rd floor

Unit N°	Total Area, m²
301	200.66
302	197.66



studio 301, 302

Unit N°	Basement Auxiliary, m²
301	38.05
302	38.09



⦿ floor plans

3rd Floor (option)

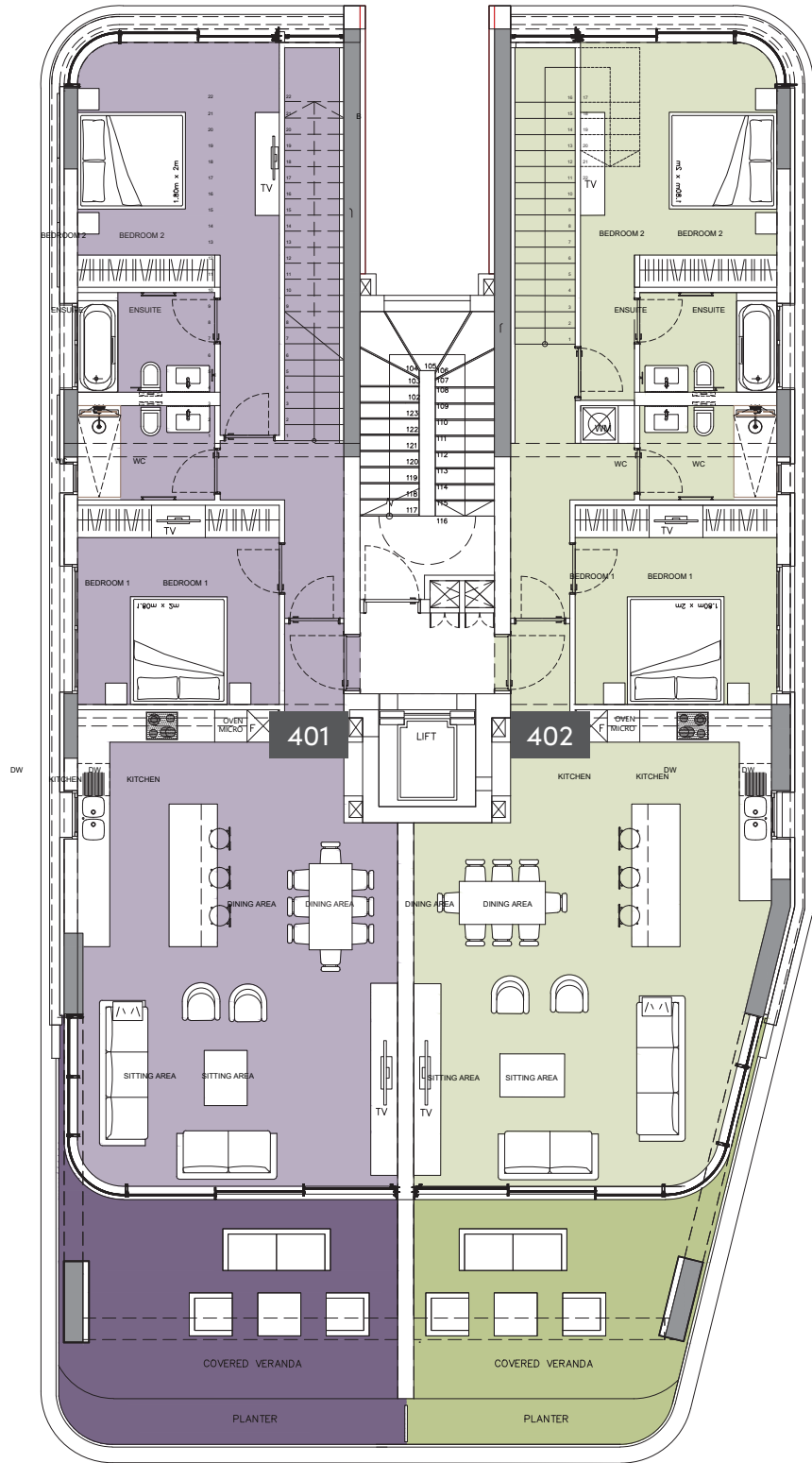
Unit N°	Total Area, m²
301	398.30



• floor plans

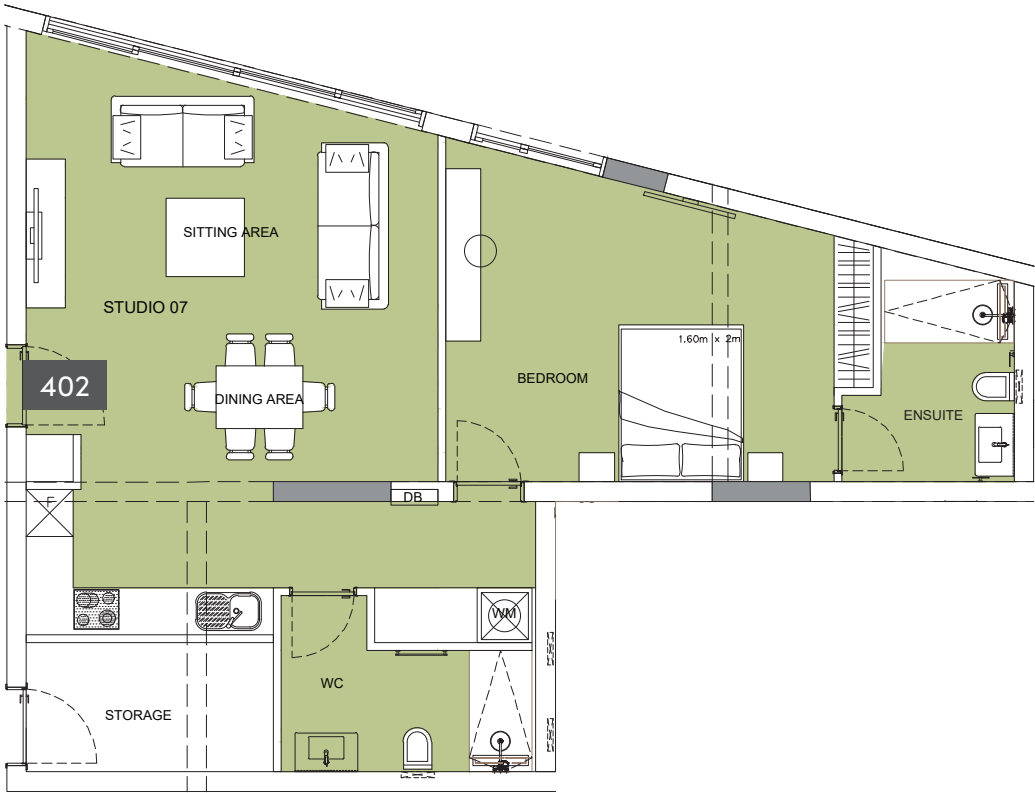
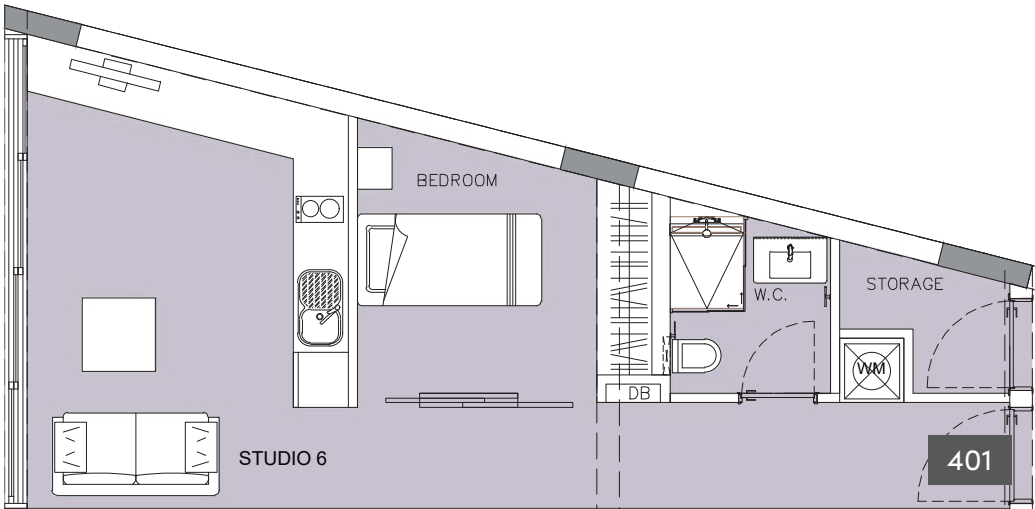
4th floor

Unit N°	Total Area, m ²
401	323.31
402	357.41



studio 401, 402

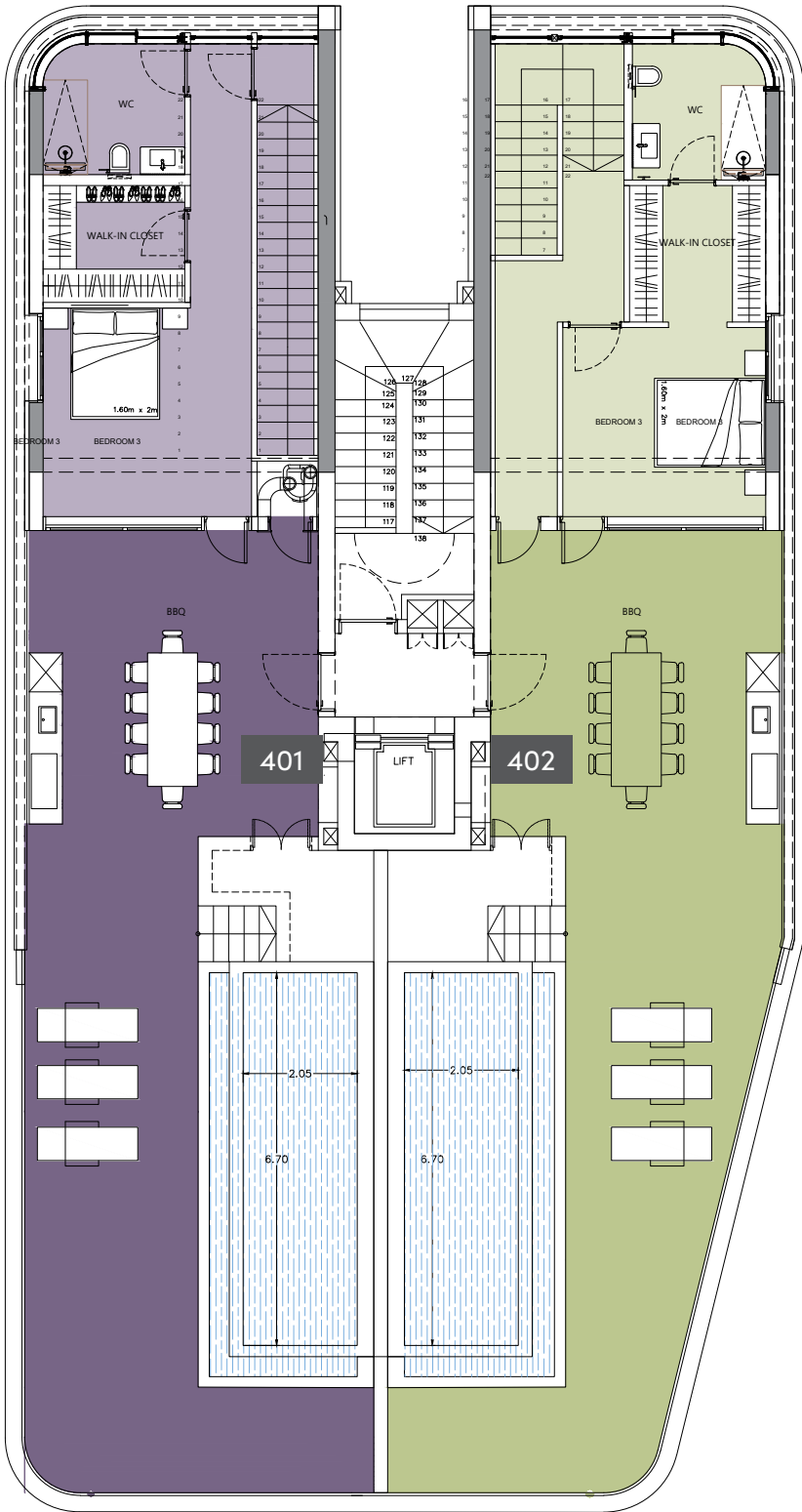
Unit N°	Basement Auxiliary, m ²
401	46.91
402	87.01



⦿ floor plans

roof terrace

Unit N°	Total Area, m ²
401	71.30
402	68.75



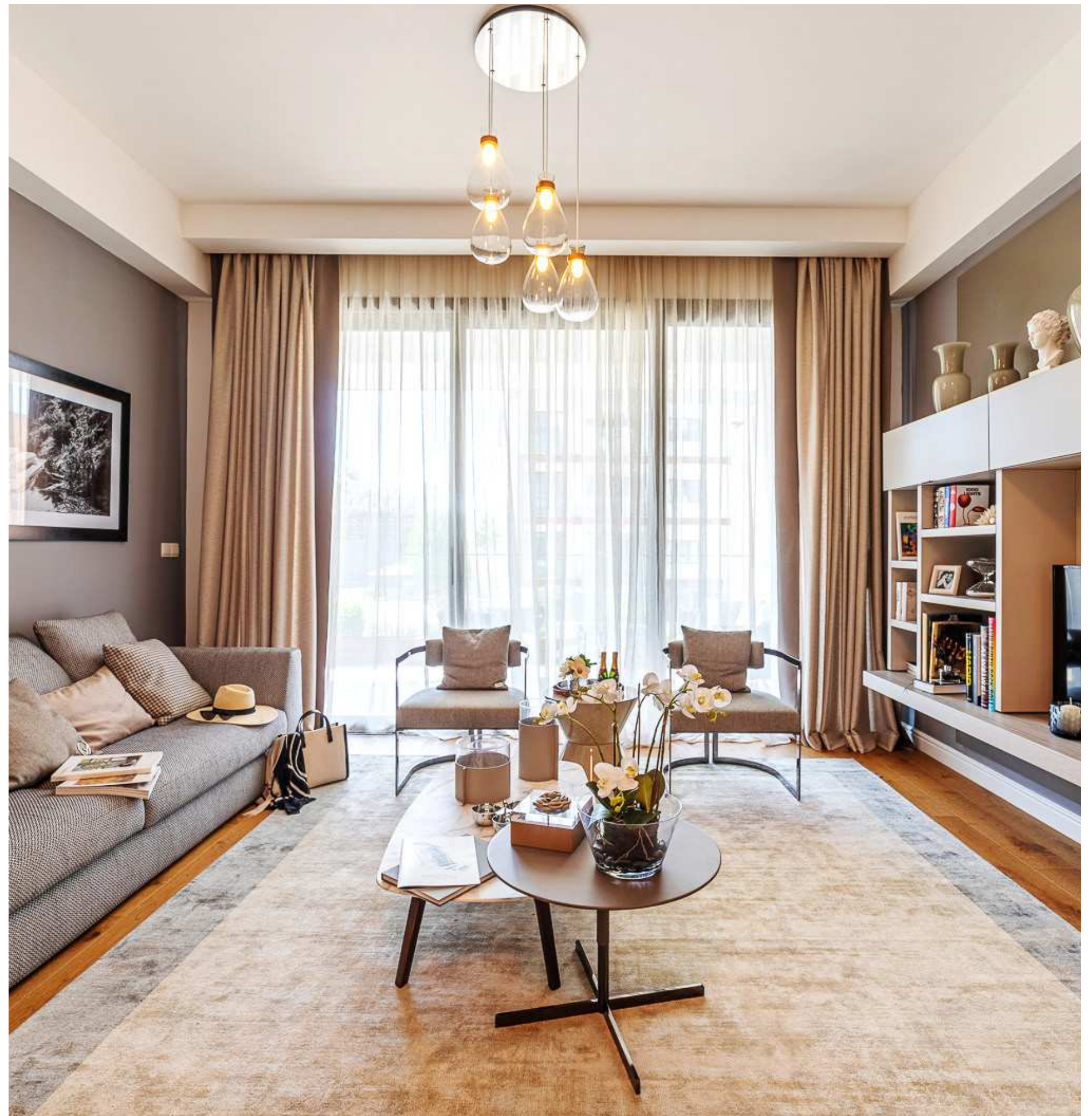
signature finishes

bbf: prime

Every property is delivered with signature top standard finishes:

- Fully completed finishings;
- Semi-solid parquet floors in each room;
- Marble floor and walls in the toilets and bathrooms;
- High ceilings (3.15 m);
- Security and fireproof entrance doors;
- Water heated floors;
- Air conditioning;
- High standard sanitary ware from European brands;
- Thermal aluminum window frames with double glazing;
- High standard kitchen cabinets
- High standard wardrobes from European brands
- Soft closers;
- Door stoppers.

NOTE: movable furniture, home appliances & interior items are extras



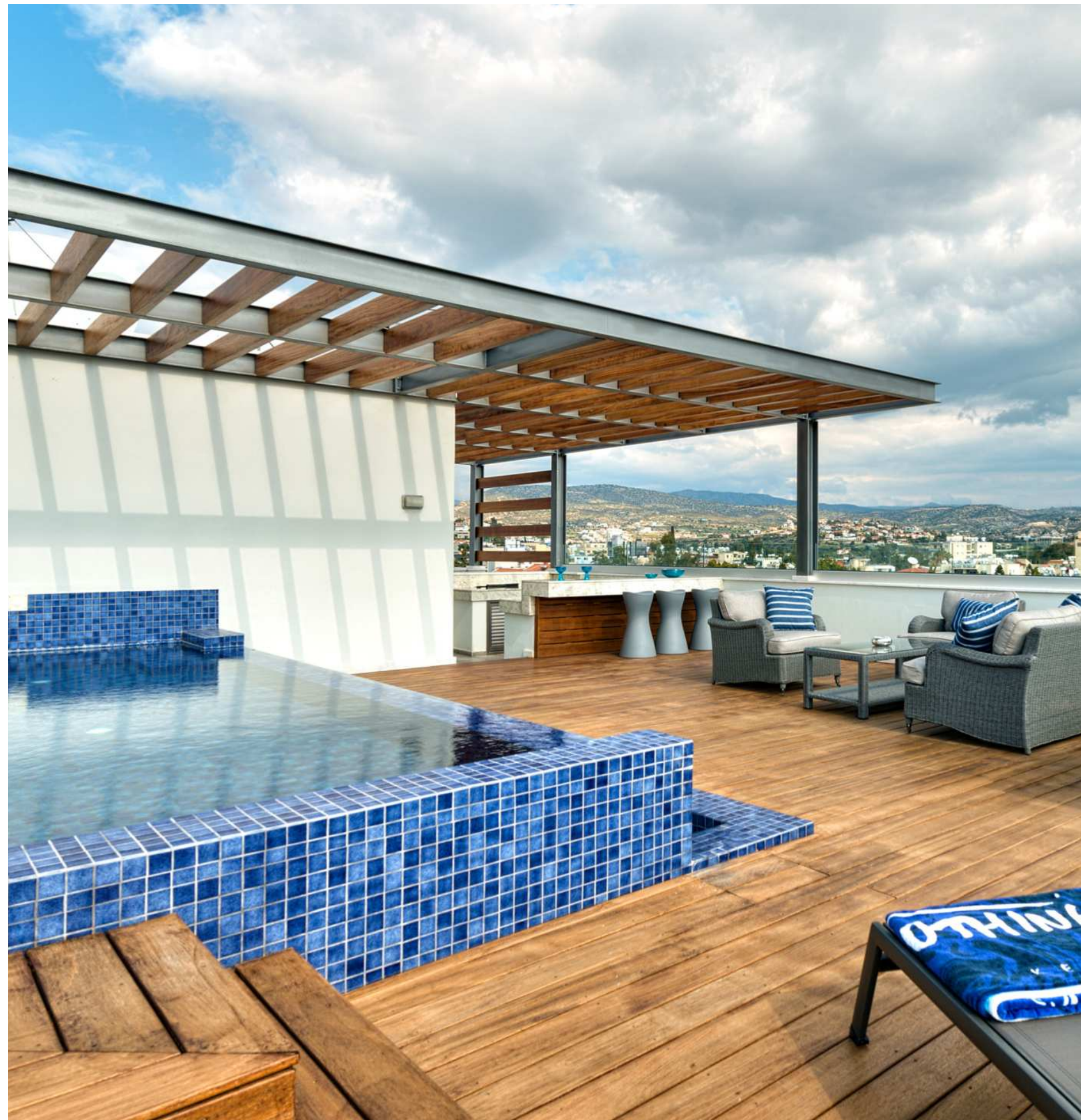
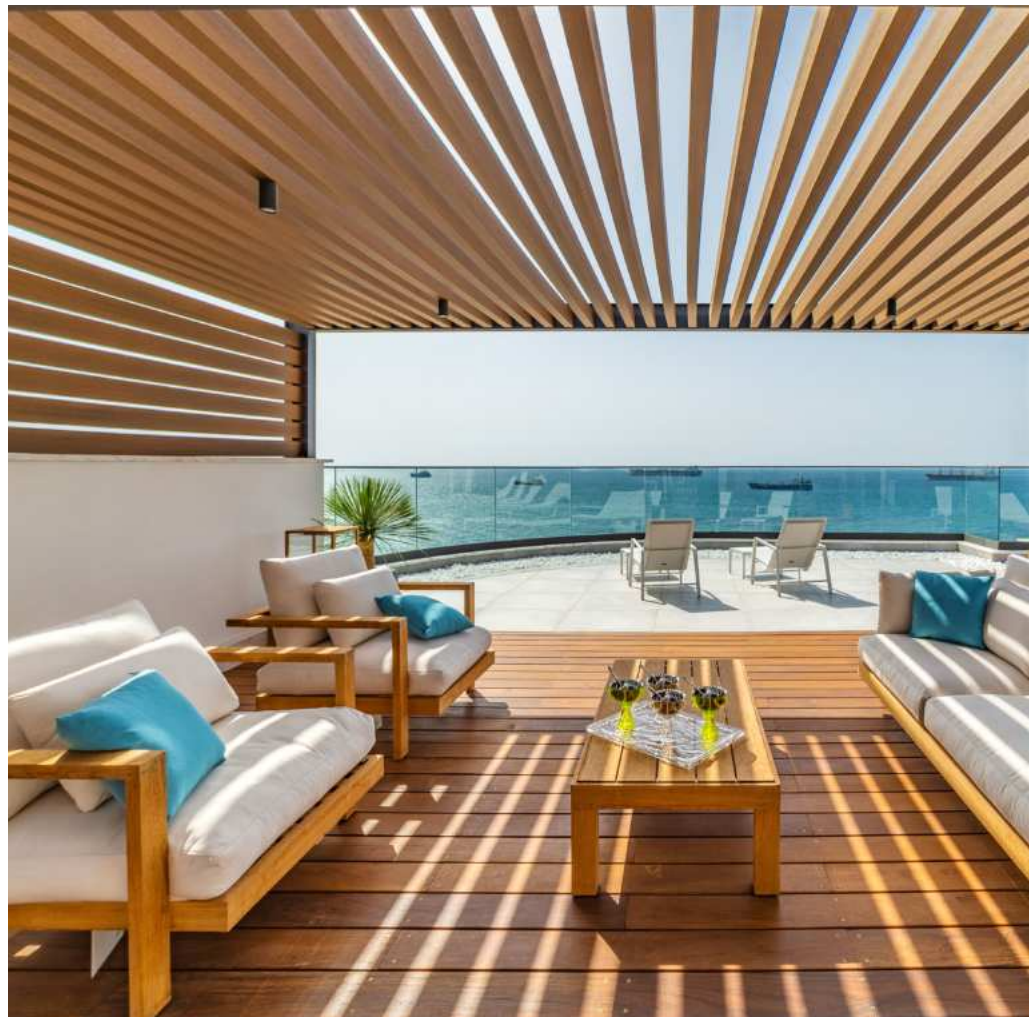
•signature finishes

bbf: penthouses

bbf® has reimagined the idea of what a penthouse should represent. The signature penthouses of bbf® are featured almost in all apartment developments and represent the best choice for a demanding and sophisticated customer who expects the best of comfort, style and privacy.

- Sizable roof space ;
- Stone floors;
- Marble tiled swimming pool with Jacuzzi;
- Barbecue;
- Pergolas for shading;

NOTE: movable furniture, home appliances & interior items are extras



bbf: Head office

Head Office in Limassol

28 Ampelakion Street, Germasogeia,
4046 Limassol, P.O.Box 70649, Cyprus

Office: +357 25 315 318
info@bbf.com

bbf: Greece

Office in Athens

88 Vasilissis Sofias Avenue,
115 28 Athens, Greece

Office: +30 210 775 5388
greece@bbf.com



bbf.com